

NOTES

## PALOMINO EVENT SPACE DETAILS

ROOM A  
SIZE: 26'-2" x 37'-0" (8.0m x 11.2m)  
AREA: 970.9 ft<sup>2</sup> (90.2 m<sup>2</sup>)  
HEIGHT: 18'-4" (5.6 m) to u/s of Bulkheads

ROOM B  
SIZE: 26'-2" x 37'-0" (8.0m x 11.2m)  
AREA: 970.9 ft<sup>2</sup> (90.2 m<sup>2</sup>)  
HEIGHT: 18'-4" (5.6 m) to u/s of Bulkheads

ROOM C  
SIZE: 26'-2" x 37'-0" (8.0m x 11.2m)  
AREA: 970.9 ft<sup>2</sup> (90.2 m<sup>2</sup>)  
HEIGHT: 18'-4" (5.6 m) to u/s of Bulkheads

ROOM D  
SIZE: 79'-1" x 36'-7" (24.1m x 11.2m)  
AREA: 2902.0 ft<sup>2</sup> (269.6 m<sup>2</sup>)  
HEIGHT: 18'-4" (5.6 m) to u/s of Bulkheads  
15'-5" (4.7 m) to u/s of Chandeliers

ROOM E  
SIZE: 26'-3" x 37'-0" (8.0m x 11.3m)  
AREA: 2902.0 ft<sup>2</sup> (269.6 m<sup>2</sup>)  
HEIGHT: 18'-4" (5.6 m) to u/s of Bulkheads  
15'-5" (4.7 m) to u/s of Chandeliers

ROOM F  
SIZE: 26'-2" x 37'-0" (8.0m x 11.2m)  
AREA: 970.9 ft<sup>2</sup> (90.2 m<sup>2</sup>)  
HEIGHT: 18'-4" (5.6 m) to u/s of Bulkheads

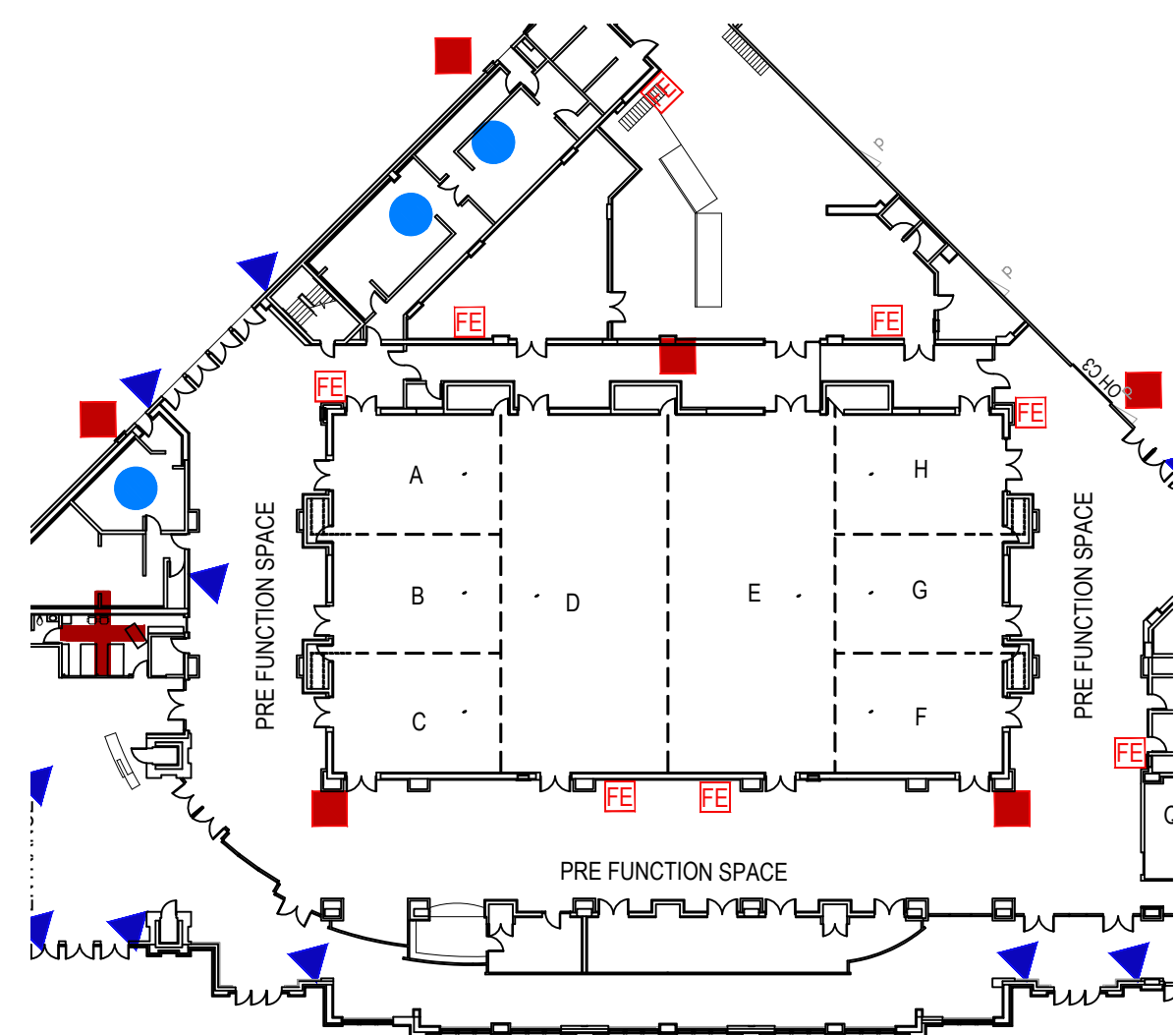
ROOM G  
SIZE: 26'-2" x 37'-0" (8.0m x 11.2m)  
AREA: 970.9 ft<sup>2</sup> (90.2 m<sup>2</sup>)  
HEIGHT: 18'-4" (5.6 m) to u/s of Bulkheads

ROOM H  
SIZE: 26'-2" x 37'-0" (8.0m x 11.2m)  
AREA: 970.9 ft<sup>2</sup> (90.2 m<sup>2</sup>)  
HEIGHT: 18'-4" (5.6 m) to u/s of Bulkheads

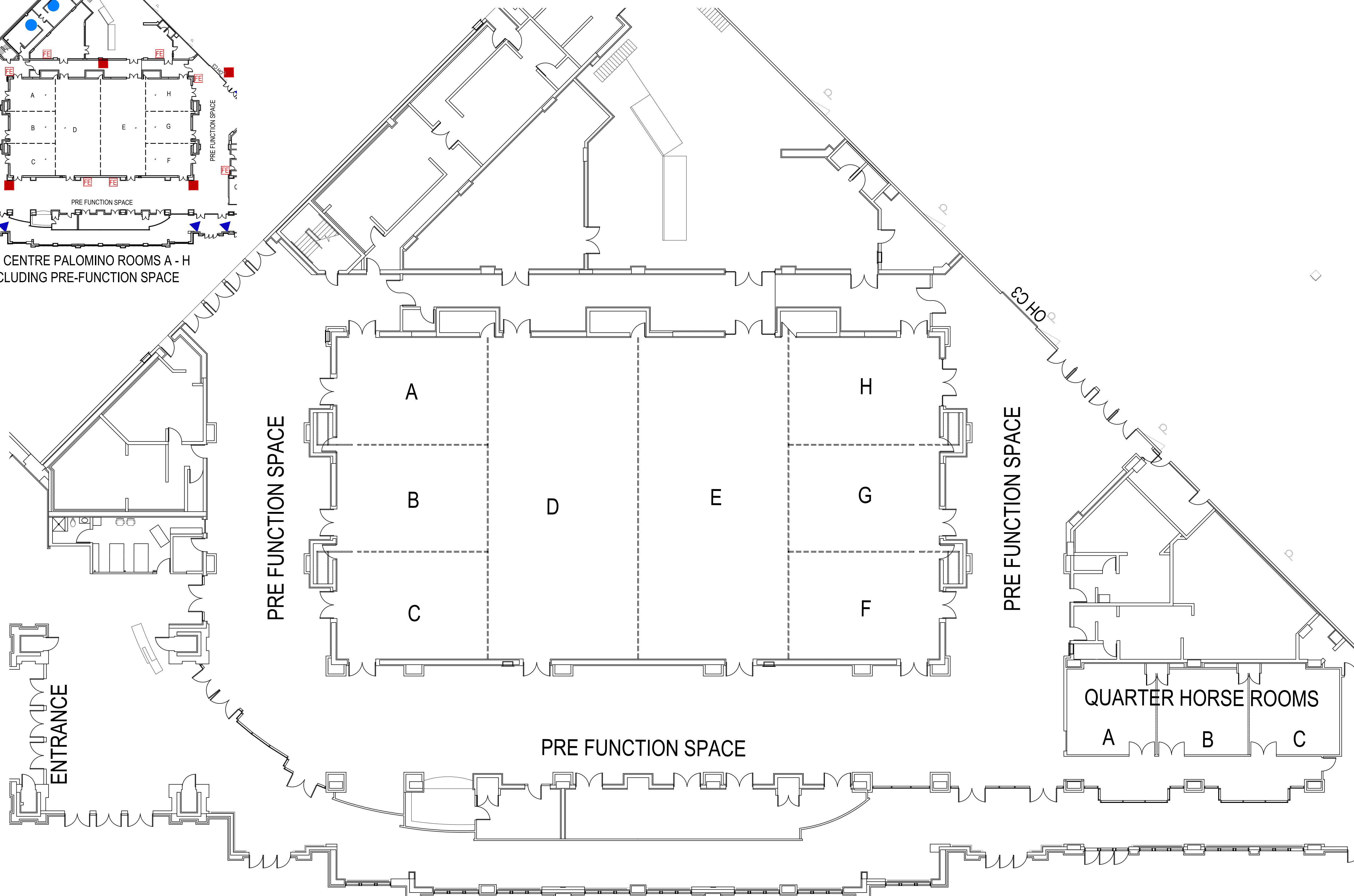
CALGARY STAMPEDE

BMO CENTRE  
PALOMINO ROOMS A - H  
EVENT SPACE

STAMPEDE PARK CALGARY, AB

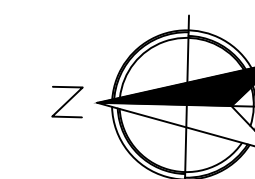


BMO CENTRE PALOMINO ROOMS A - H  
INCLUDING PRE-FUNCTION SPACE



### Legend

- ◆ Fire Hose / Fire Cabinet
- ▼ Pull Station
- # Data Outlet in Floor
- FE Fire Extinguisher
- Washrooms
- Airwall
- + Medical Services



METERS

1:150