

A GREATER WAY TO GATHER

BMO  CENTRE
STAMPEDE PARK • CALGARY • CANADA



WHY CALGARY

Calgary is a modern city with timeless hospitality at the heart of Western Canada.

And our vibrant culture is as dynamic as the landscape surrounding us. As Calgarians, we have open hearts and open doors. It's a world-class centre of energy, business, culture and recreation, home to over one million and a half friendly locals; we look forward to welcoming you and your guests to the best of Canada's great west.



Watch the sun rise over the Prairies and set behind the majestic Rocky Mountains.



WHY THE CALGARY STAMPEDE

—

We've proudly come together to put on spectacles and world-renowned events for more than one hundred years. Each year, in July, over 1.2 million people from around the globe visit Stampede Park to experience our unique western hospitality during the 10 days of The Greatest Outdoor Show on Earth.

One of Canada's
iconic experiences.

It also equips us with the expertise and amenities needed to realize spectacular events of every size.

Unique western hospitality

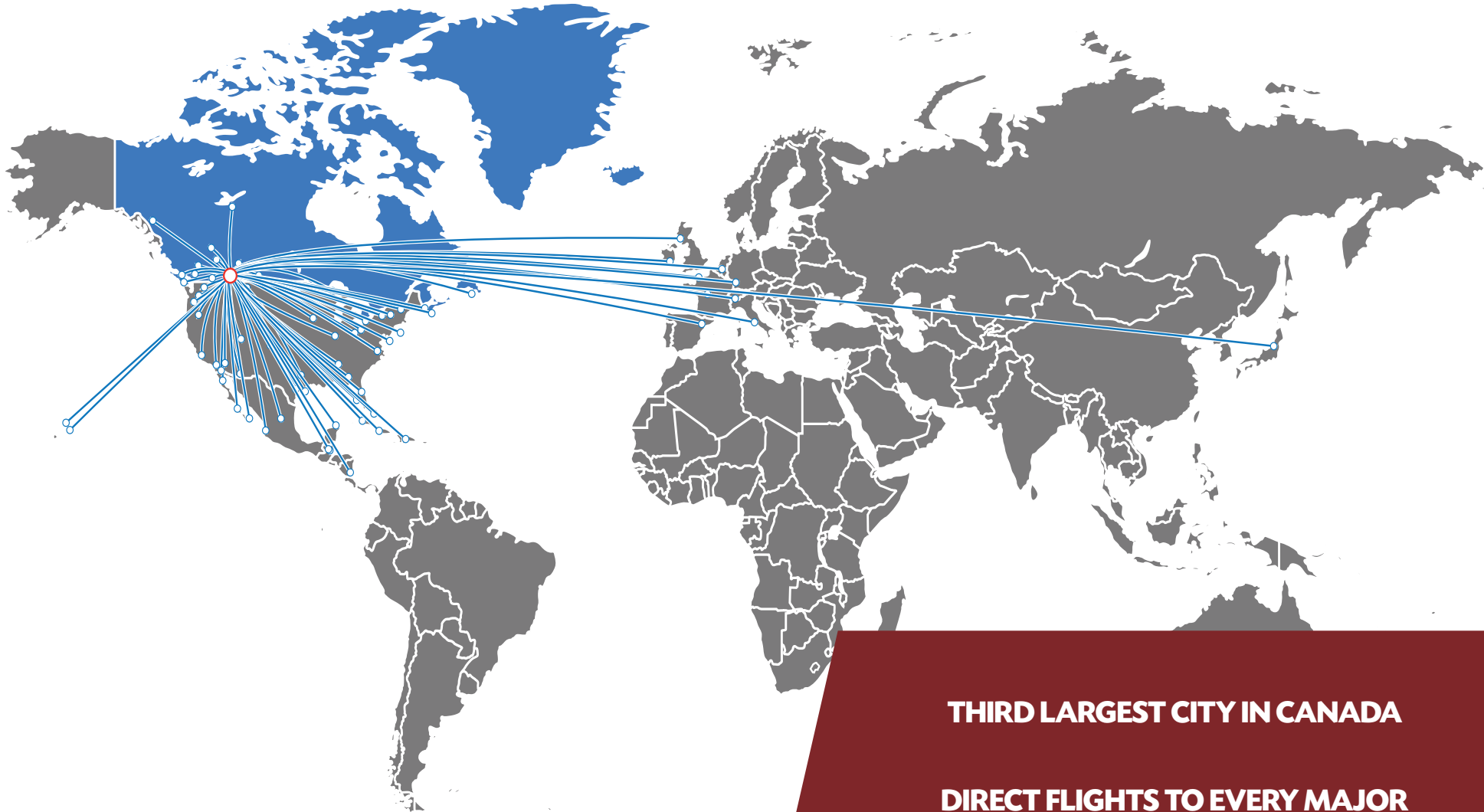
Memorable experiences created by the efforts of 3000 volunteers

Connecting over 50,000 youth to programs around food sustainability, land and ecosystem management and animal care

The Stampede remains committed to creating safe spaces for Indigenous Peoples to celebrate and practice their cultures and for non-Indigenous people to engage, appreciate, and understand



A FASTER FLIGHT



YYC, Calgary's International Airport, features direct flights to over 86 cities and 15 countries around the world and welcomes more than 18 million passengers per year.

THIRD LARGEST CITY IN CANADA

**DIRECT FLIGHTS TO EVERY MAJOR
EUROPEAN AND US HUB**

**60 MINUTE DRIVE TO THE ROCKY
MOUNTAINS AND BANFF NATIONAL PARK**

CANADIAN DESTINATIONS

ALBERTA: Edmonton, Fort McMurray, Grande Prairie, Lethbridge, Lloydminster, Medicine Hat

BRITISH COLUMBIA: Abbotsford, Comox, Cranbrook, Fort St. John, Kamloops, Kelowna, Nanaimo, Penticton, Prince George Terrace, Vancouver, Victoria

MANITOBA: Brandon, Winnipeg

NEW BRUNSWICK: Moncton

Newfoundland and Labrador: St. John's

NORTHWEST TERRITORIES: Yellowknife

NOVA SCOTIA: Halifax

ONTARIO: Hamilton, Kitchener/Waterloo, London, Ottawa, Thunder Bay, Toronto, Windsor

PRINCE EDWARD ISLAND: Charlottetown

QUÉBEC: Montréal, Québec City

SASKATCHEWAN: Regina

INTERNATIONAL DESTINATIONS

FRANCE: Paris

GERMANY: Frankfurt

IRELAND: Dublin

ITALY: Rome

JAPAN: Tokyo

MEXICO: Cancun, Puerto Vallarta, San José del Cabo

NETHERLANDS: Amsterdam

UNITED KINGDOM: London Gatwick, London Heathrow

SCOTLAND: Edinburgh

SPAIN: Barcelona

SWITZERLAND: Zürich

Additional winter seasonal flights are available to sun a number of destinations (Bahamas, Belize, Costa Rica, Cuba, Dominican Republic, Jamaica, Mexico).

U.S. DESTINATIONS

ARIZONA: Phoenix

CALIFORNIA: Los Angeles, Palm Springs, Santa Ana, San Diego, San Francisco

COLORADO: Denver

FLORIDA: Fort Lauderdale, Orlando, Tampa

GEORGIA: Atlanta

HAWAII: Honolulu, Kahilui, Kailua-Kona

ILLINOIS: Chicago

MASSACHUSETTS: Boston

MICHIGAN: Detroit

MINNESOTA: Minneapolis/Saint Paul

NEVADA: Las Vegas

NEW JERSEY: Newark

NEW YORK: New York City

OREGON: Portland

TENNESSEE: Nashville

TEXAS: Austin, Houston, Dallas/Fort Worth

UTAH: Salt Lake City

VIRGINIA: Washington

WASHINGTON: Seattle/Tacoma

TRANSFORMING OUR SPACES INTO YOURS

The Calgary Stampede has been hosting unique events for over 110 years. From outdoor stadiums, exhibition halls, meeting rooms and historical log cabins, we have a venue for every occasion.

Event planning is what we do.
Extraordinary experiences are who we are.

We intuitively understand the needs of hosts, planners, and sponsors – working with us, you will not only have a unique space, but a partner in executing your event.

Elevating the event experience through:

- Modern technologies
- Specialist support
- Multi-purpose, accessible event spaces
- Sustainability initiatives
- Cleanliness accreditation



EVENT SERVICES TEAM

Our event services team are experts at transforming spaces and doing it fast.



START-TO-FINISH PRODUCTION AND PROMOTIONAL SUPPORT

We offer everything from floor plans to signage to furnishings and décor.



CONNECTIONS IN AND OUTSIDE THE CITY

Hosts benefit from our deep-rooted knowledge and connections. From private rodeos to luxury horseback riding trips, we can create a transformative experience your guests will never forget.

WHY THE BMO CENTRE



From the moment you walk into the BMO Centre, you'll feel both welcomed and inspired. This brand new venue is the epitome of timeless western hospitality, combined with the very best of what the future holds in the heart of the city's emerging Culture + Entertainment District.

The new BMO Centre will be the newest, largest, and most innovative convention centre in Western Canada.

We recognize the varied needs of event planners and are here to help you select and tailor the right space for your event. Purposefully designed to create authentic connections between guests, the BMO Centre promises to make gatherings even greater.

350,000 sq feet of contiguous exhibit space

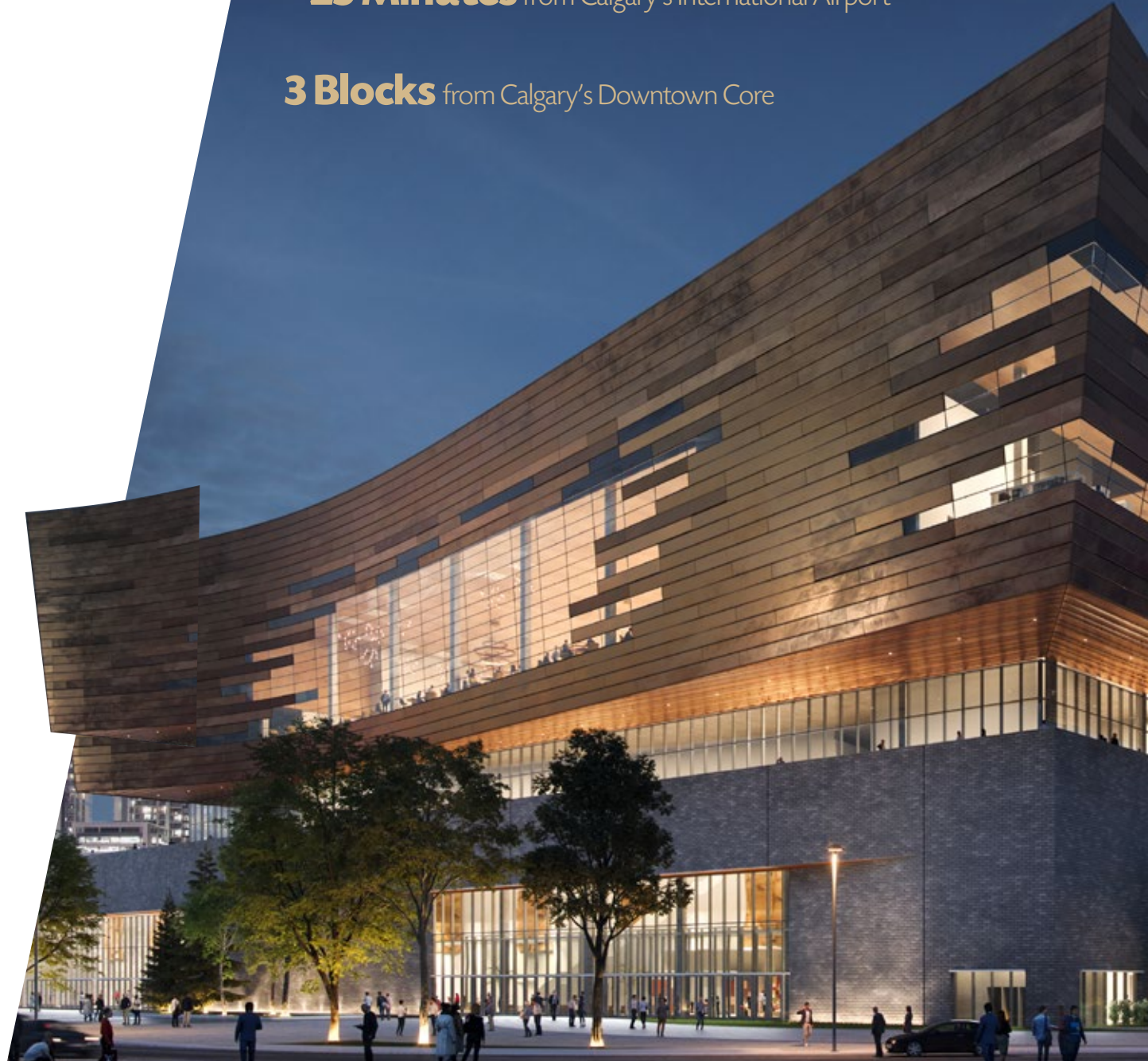
80,000 sq feet of divisible meeting space

50,000 sq foot ballroom

500,000 Saleable Space

25 Minutes from Calgary's International Airport

3 Blocks from Calgary's Downtown Core





Embracing
and elevating
every season

A BOLDER VENUE

Thoughtfully designed from input from meeting planners for the needs of today's and tomorrow's conference attendees.

Ample, adaptable interior spaces

Meeting rooms wired for instant connectivity\

Flexible breakout areas

Inviting outdoor spaces



LEVEL 1



LEVEL 2



LEVEL 3

Meet Our Executive Chef

Chef Nicholas Pena-Alvarez is an award-winning Chef with over 25 years of global experience in kitchen management, menu design and development, catering and banquets, and team building and mentoring. During his career he has built a diverse background of culinary and managerial expertise developed in hotels, cruise ships, Relais & Chateaux Michelin restaurants and the culinary education field. Chef Nicholas is a World Master Chef Society Member and Certified Chinese Pastry Master.



Local Libations

Alongside a wide international selection, we offer the best locally produced beverages. We source much of our wine from Canada's world-renowned Okanagan Valley vineyards. Our distillery partners use regional ingredients to create unique spirits that can be enjoyed alone or in delectable cocktails.



The Spirit of the West

Savour a taste of the Greatest Outdoor Show on Earth with this made-in-Alberta rye whiskey, inspired by the legendary spirit of The Calgary Stampede.

True to our shared agriculture roots and proud western heritage, Stampede Canadian rye whiskey is crafted with the same pride and passion as the farmers who devote their lives to putting food on our tables and whisky in our glasses.

Every drop represents our connection to each other and the land. Our shared values and the memories we've forged together.



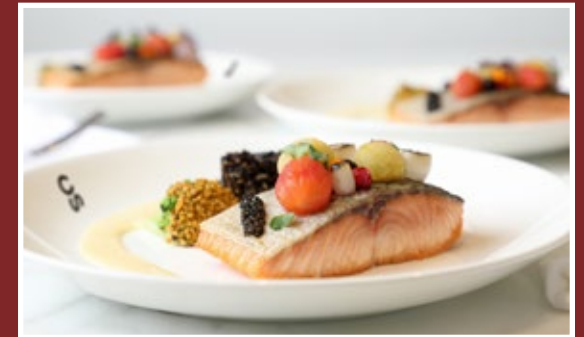
THE UNIQUE FLAVOURS OF A UNIQUE PLACE

On the great ranches of the west, the cook's kitchen was a welcoming gathering place. The long days ended around plentiful tables. With the ring of a bell, the cook's creation was served. Family, friends, and helping hands gathered together. And it was here, where the chef's offerings stood their ultimate test: the hearty appetites of those taming the Canadian West.

Today, our unique form of western hospitality and dedication to impeccable experiences defines everything we offer. Still rooted in the ranch, we have prepared a menu true to Canada's local flavours – from fresh, locally grown produce to our world-famous Alberta beef.



Contemporary
Canadian Cuisine
– from scratch,
seasonal and using
the finest fresh
local ingredients



LEVEL 1 SPECIFICATIONS

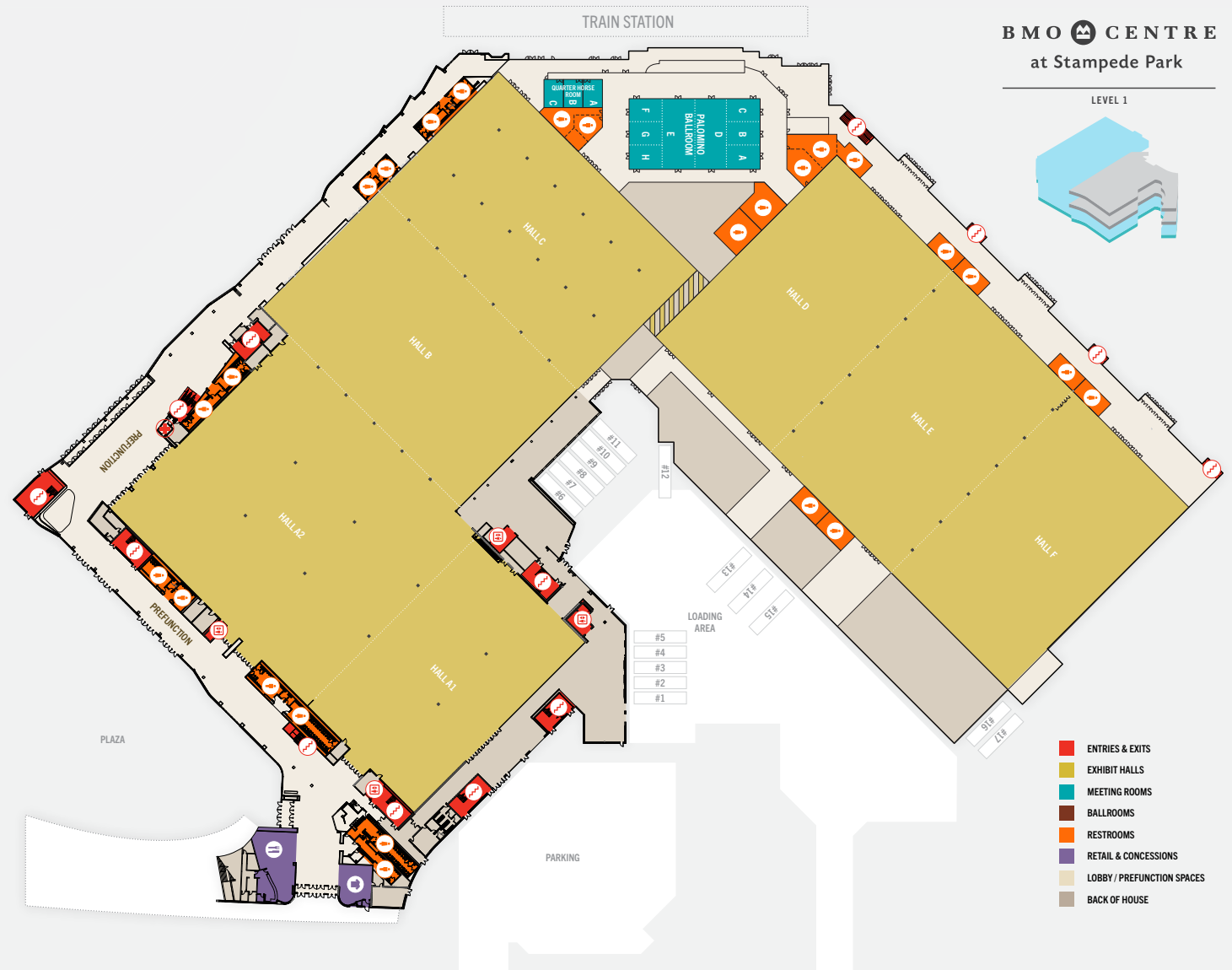
	Width Feet	Length Feet	Height Feet	Usable Area Sq Feet	Width Metres	Length Metres	Height Metres	Usable Area Sq Metres	Banquet 72"	Classroom 3 per 6'	Theatre	Rcptn	U-Shape	10'x10' Exhibits
EXHIBIT HALLS														
Hall A1	147	245	30.0	35,500	45	75	9.1	3,298	2,080	1,479	3,941	3,227	n/a	160
Hall A2	271	245	30.0	66,500	83	75	9.1	6,178	3,910	2,769	6,455	6,045	n/a	320
Hall B	274	174	29.5	47,641	84	53	9.0	4,426	2,800	1,983	3,947	3,947	n/a	236
Hall C	274	178	17.2	48,600	84	54	5.2	4,515	2,850	2,022	3,383	3,383	n/a	234
Hall D	280	173	29.5	48,300	85	53	9.0	4,487	2,840	2,010	3,600	3,600	n/a	291
Hall E	280	172	35.0	48,020	85	52	10.7	4,461	2,820	1,998	3,400	3,400	n/a	291
Hall F	280	172	35.0	48,020	85	52	10.7	4,461	2,820	1,998	3,400	3,400	n/a	291
Level 01 - Meeting Rooms														
Palomino Ballroom	150	80	15.5	12,000	46	24	4.7	1,115	700	498	1,000	1,091	30	60
A, B, C, H, G or F	37	27	15.5	1,000	11	8	4.7	93	50	39	83	91	18	0
AB or BC or GH	37	79	15.5	2,000	11	24	4.7	186	110	81	166	182	30	0
A-C or F-H or D or E	38	79	15.5	3,000	12	24	4.7	279	170	123	250	273	30	0
A-D or E-H	79	79	15.5	6,000	24	24	4.7	557	350	249	500	545	30	20
A-E or D-H	117	79	15.5	9,000	36	24	4.7	836	520	375	750	818	30	40
Quarter Horse	67	22	11.5	1,386	20	7	3.5	129	80	57	115	96	24	0
Quarter Horse A or B or C	23	22	11.5	462	7	7	3.5	43	20	18	38	34	6	0
Quarter Horse AB or BC	45	22	11.5	924	14	7	3.5	86	50	36	77	62	16	0

Small variances in length and width dimensions vs. usable area due to details of the room

The BMO Centre's new, dramatic central gathering space will be anchored by Canada's largest indoor fireplace, offering a nod to Calgary's western heritage and the feeling of gathering around the campfire as a place for warmth and the exchange of ideas.



LEVEL 1



LEVEL 2 SPECIFICATIONS

	Width Feet	Length Feet	Height Feet	Usable Area Sq Feet	Width Metres	Length Metres	Height Metres	Usable Area Sq Metres	Banquet 72"	Classroom 3 per 6'	Theatre	Rcptn	U-Shape	10'x10' Exhibits
Level 02 - Meeting Rooms														
203	29	49	14.0	1,390	9	15	4.3	129	80	57	115	126	24	0
204	29	49	14.0	1,338	9	15	4.3	124	70	54	111	122	24	0
205	30	49	14.0	1,405	9	15	4.3	131	80	57	117	128	24	0
206	12	23	12.0	294	4	7	3.7	27	10	12	24	27	4	0
207	15	23	12.0	320	5	7	3.7	30	10	12	26	29	6	0
208	30	34	12.0	1,032	9	10	3.7	96	60	42	86	94	18	0
209	28	59	14.0	1,620	9	18	4.3	151	90	66	135	147	30	0
210	30	59	14.0	1,711	9	18	4.3	159	100	69	142	156	30	0
211	31	59	14.0	1,710	9	18	4.3	159	100	69	142	155	30	0
209/210	58	59	14.0	3,331	18	18	4.3	310	190	138	277	303	30	0
210/211	61	59	14.0	3,421	19	18	4.3	318	200	141	285	311	30	0
209/210/211	89	59	14.0	5,041	27	18	4.3	468	290	210	420	458	30	20
212	27	59	14.0	1,573	8	18	4.3	146	90	63	131	143	28	0
213	27	59	14.0	1,551	8	18	4.3	144	90	63	129	141	28	0
214	31	59	14.0	1,727	9	18	4.3	160	100	69	143	157	30	0
215	30	59	14.0	1,708	9	18	4.3	159	100	69	142	155	30	0
216	28	59	14.0	1,625	9	18	4.3	151	90	66	135	148	30	0
214/215	61	59	14.0	3,435	19	18	4.3	319	200	141	286	312	30	0
215/216	58	59	14.0	3,333	18	18	4.3	310	190	138	277	303	30	0
214/215/216	89	59	14.0	5,060	27	18	4.3	470	290	210	421	460	30	20
219	40	31	14.0	1,146	12	9	4.3	107	60	45	95	104	20	0
220	40	31	14.0	1,172	12	9	4.3	109	60	48	97	107	20	0
221	28	78	14.0	1,820	8.5	22	4.3	160	60	90	30	160	40	0
222	29	49	14.0	1,385	9	15	4.3	129	80	57	115	126	24	0
223	29	49	14.0	1,385	9	15	4.3	129	80	57	115	126	24	0
224	28	49	14.0	1,332	9	15	4.3	124	70	54	111	121	24	0
225/226	29	62	14.0	3,554	9	19	4.3	165	100	72	148	162	30	0
227	29	31	12.0	864	9	9	3.7	80	50	36	72	79	14	0
233	29	31	12.0	858	9	9	3.7	80	50	33	71	78	14	0
234	30	31	12.0	895	9	9	3.7	83	50	36	74	81	16	0
235	30	31	12.0	884	9	9	3.7	82	50	36	73	80	16	0
236/237	29	62	14.0	3,554	9	19	4.3	165	100	72	148	162	30	0
The Brand Room	170	177	14.1	2,830	21	18	4.6	260	140	99	202	221	30	0
Arabian A	28	28	8.8	784	9	9	2.7	73	40	30	65	59	12	0
Arabian B	42	28	8.8	1,176	13	9	2.7	109	60	48	98	91	20	0
Arabian C	32	28	8.8	896	10	9	2.7	83	50	36	74	59	16	0
Arabian AB	74	28	8.8	1,960	23	9	2.7	182	110	81	163	150	30	0
Arabian BC	70	28	8.8	2,072	21	9	2.7	193	120	84	172	150	30	0
Arabian ABC	102	28	8.8	2,856	31	9	2.7	265	160	117	238	260	30	0
Mustang	9	24	8.8	2,650	3	7	2.7	246	150	108	220	210	30	0
Level 02 - Informal Breakout Rooms														
201	20	16	12.0	290	6	5	3.7	27	10	12	24	26	4	0
202	20	13	12.0	244	6	4	3.7	23	10	9	20	22	4	0
217	18	18	12.0	333	6	6	3.7	31	10	12	27	30	6	0
218	18	18	12.0	326	6	6	3.7	30	10	12	27	29	6	0
228	10	11	9.0	110	3	3	2.7	10	0	3	9	10	0	0
229	10	11	9.0	110	3	3	2.7	10	0	3	9	10	0	0
230	10	11	9.0	110	3	3	2.7	10	0	3	9	10	0	0
231	17	15	12.0	252	5	5	3.7	23	10	9	21	22	4	0
232	17	15	12.0	252	5	5	3.7	23	10	9	21	22	4	0

Small variances in length and width dimensions vs. usable area due to details of the room



LEVEL 3 SPECIFICATIONS

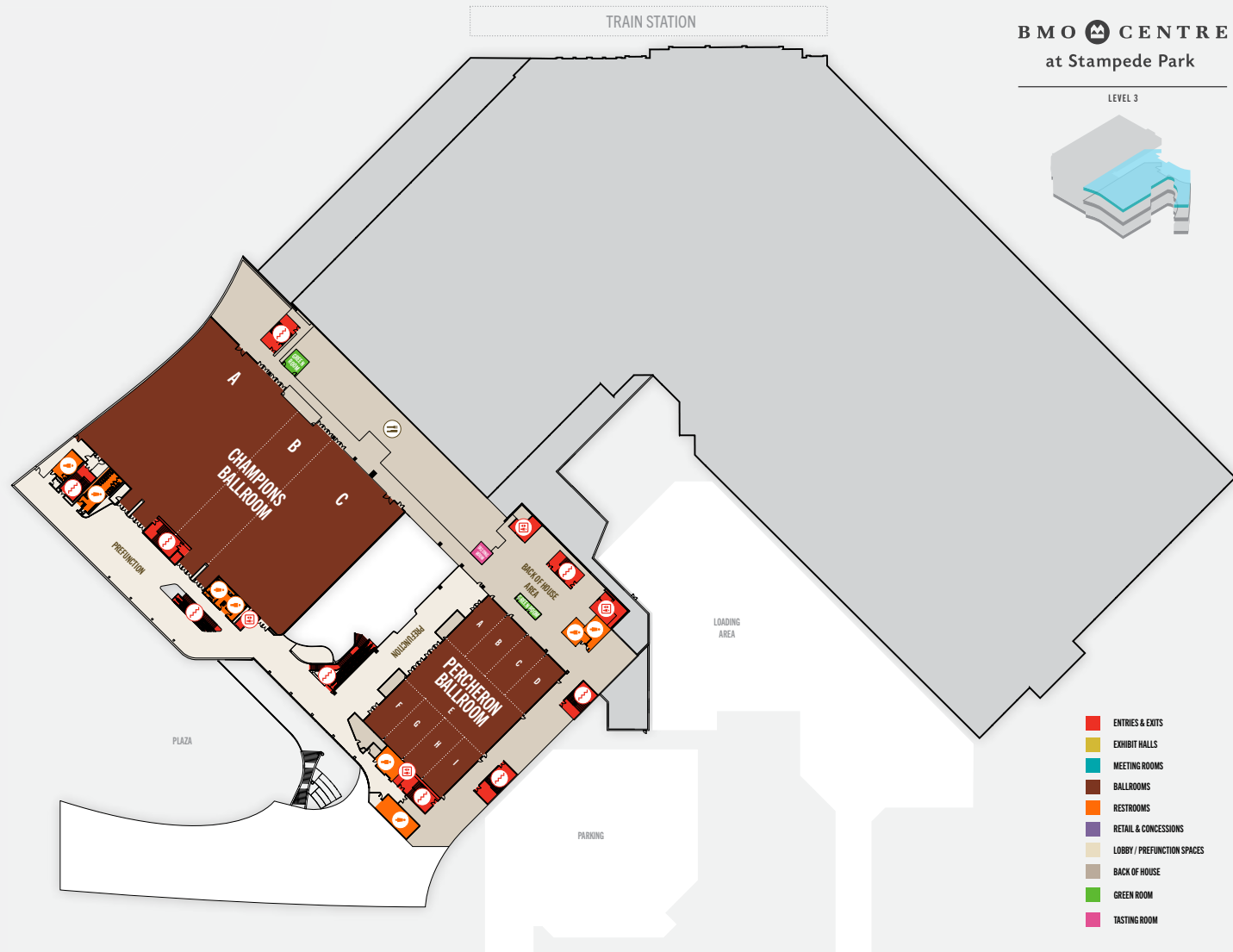
	Width Feet	Length Feet	Height Feet	Usable Area Sq Feet	Width Metres	Length Metres	Height Metres	Usable Area Sq Metres	Banquet 72"	Classroom 3 per 6'	Theatre	Rcptn	U-Shape	10'x10' Exhibits
Champions Ballroom														
A	135.0	177.0	30.0	23,895	41.2	53.9	9.1	2,219	1,320	936	1,873	2,043	30	100
C	104.0	177.0	30.0	18,408	31.7	53.9	9.1	1,710	1,027	753	1,534	1,673	30	80
AB	172.0	177.0	30.0	30,444	52.4	53.9	9.1	2,828	1,790	1,266	2,537	2,768	30	140
BC	149.0	177.0	30.0	26,373	45.4	53.9	9.1	2,450	1,550	1,098	2,197	2,398	30	120
Champions Ballroom	284.0	177.0	30.0	50,000	86.6	53.9	9.1	4,645.2	2,870	2,034	4,071	4,441	30	240
Percheron Ballroom														
A	27.0	60.0	22.0	1,630	8.2	18.3	6.7	151	90	66	135	148	30	0
B	28.0	60.0	22.0	1,620	8.5	18.3	6.7	151	90	66	135	147	30	0
C	28.0	60.0	22.0	1,620	8.5	18.3	6.7	151	90	66	135	147	30	0
D	27.0	60.0	22.0	1,630	8.2	18.3	6.7	151	90	66	135	148	30	0
E	110.0	60.0	22.0	6,165	33.5	18.3	6.7	573	360	255	513	560	30	0
F	27.0	60.0	22.0	1,625	8.2	18.3	6.7	151	90	66	135	147	30	0
G	28.0	60.0	22.0	1,630	8.5	18.3	6.7	151	90	66	135	148	30	0
H	28.0	60.0	22.0	1,630	8.5	18.3	6.7	151	90	66	135	148	30	0
I	27.0	60.0	22.0	1,625	8.2	18.3	6.7	151	90	66	135	147	30	0
ABCD	110.0	60.0	22.0	6,500	33.5	18.3	6.7	604	360	264	540	590	120	30
FGHI	110.0	60.0	22.0	6,510	33.5	18.3	6.7	605	360	264	540	590	120	30
ABCD + E	110.0	60.0	22.0	12,665	33.5	18.3	6.7	1,177	720	519	1,053	1,150	150	60
FGHI + E	110.0	60.0	22.0	12,675	33.5	18.3	6.7	1,178	720	519	1,053	1,150	150	60
Percheron Ballroom	110.0	180.0	22.0	20,000	33.5	54.9	6.7	1,858.1	1,120	798	1,597	1,743	30	90

Small variances in length and width dimensions vs. usable area due to details of the room

Sweeping views of the
Rocky Mountains from
the Champions Ballroom



LEVEL 3



Located in the heart of
Calgary's emerging Culture
+ Entertainment District



OUR TEAM

Kaitlin Ostrow, Manager, Sales Development

kostrow@calgarystampede.com
403.261.0501

Dave Sclanders, Sales Development Manager

dsclanders@calgarystampede.com
403.261.0541

Jessie Lee, Sales Manager

jlee@calgarystampede.com
403.261.0505

Jennifer Diggins, Sales Manager

jdiggins@calgarystampede.com
403.261.0424

Glen McKenzie, Sales Manager

gmckenzie@calgarystampede.com
403.261.0439

Jenn Herman, Sales Manager

jherman@calgarystampede.com
403.261.0538

Stacie Hammer, Sales Manager

shammer@calgarystampede.com
403.261.0134

Melanie Todd, Sales Manager

mtodd@calgarystampede.com
403.261.0338

Michelle Fitzgerald, Sales Manager

mfitzgerald@calgarystampede.com
403.261.0536

Kathleen White, Sales Manager

kwhite@calgarystampede.com
403.232.9075

www.venues.calgarystampede.com



A GREATER WAY TO GATHER

BMO  CENTRE

STAMPEDE PARK • CALGARY • CANADA


Calgary Stampede

