

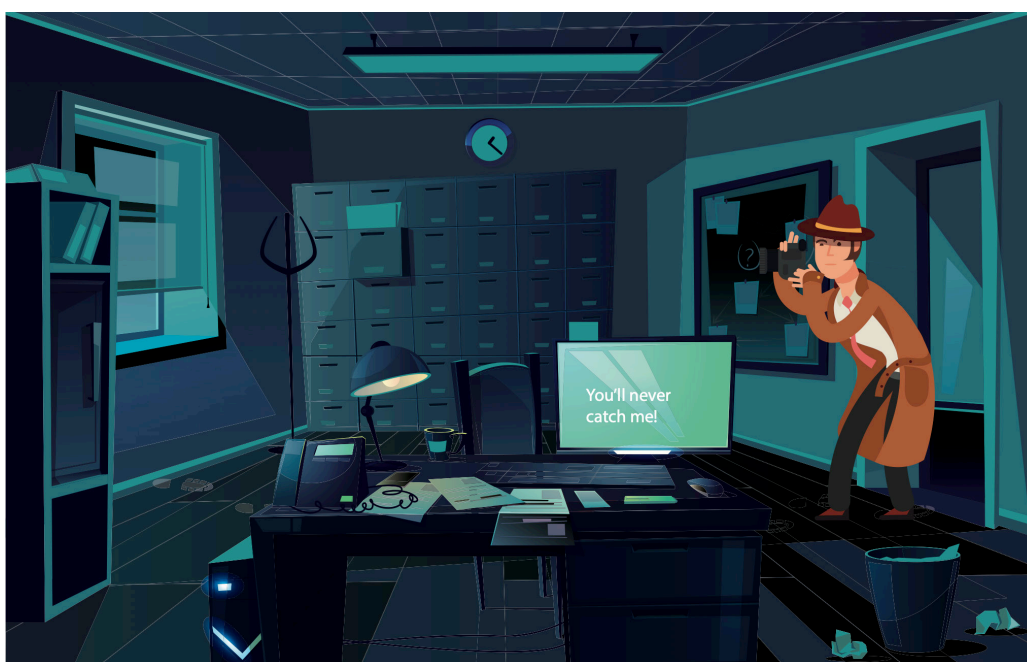
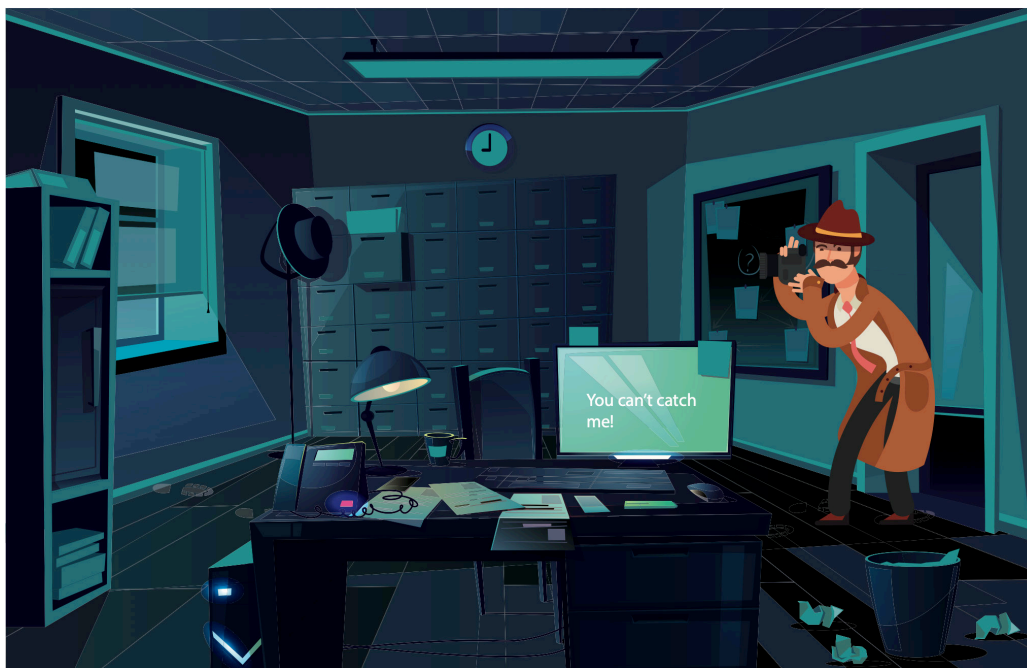
Challenge Editing

Year 2 / P3

Activity 1

You have taken on the very important role of a punctuation and spelling detective. You have a series of missions to complete to be a successful detective.

For your first challenge, can you spot 8 differences between the two pictures below?



Challenge Editing

Year 2 / P3

Activity 2

For your second challenge, can you spot the errors in the sentences below and write the correct sentence underneath, by adding in capital letters, full stops and question marks in the correct places?

1 on saturday the girls went to the park

2 can i go to the shop with james

3 martha went to the zoo yesterday

4 sameera and her brother are going on holiday to spain

5 the children had a great day at the seaside

6 can we bake a cake for the party

7 zak and i saw clowns at the circus

8 did you go on all the rides at the fair

9 my friend has a dog he is called toby

10 we flew on a plane to america

Challenge Editing

Year 2 / P3

Activity 3

For your third challenge, can you spot the spelling mistakes in the sentences below? Underline the spelling error in the sentence and write the correct spelling on the line below.

1 We shud drink at least three cups of water a day.

2 The boy sed that he was the fastest runner in his class.

3 Asif took his pocket muney to the shop to buy a packet of crisps.

4 Everibody went on a school trip to the zoo.

5 The girl looked beutiful in her wedding dress.

6 The teecher asked the children to draw a picture.

7 Tom went to Jim's howse for lunch.

8 We wood like to invite you to our party.

9 Abdul went swiming in the sea on the holiday.

10 Can we go on the slide agayn?
