

## USER GUIDE

# Chromium Next GEM Single Cell 3' Reagent Kits v3.1 (Dual Index)



### FOR USE WITH

Chromium Next GEM Single Cell 3' Kit v3.1, 16 rxns PN-1000268

Chromium Next GEM Single Cell 3' Kit v3.1, 4 rxns PN-1000269

Chromium Next GEM Chip G Single Cell Kit, 48 rxns PN-1000120

Chromium Next GEM Chip G Single Cell Kit, 16 rxns PN-1000127

Dual Index Kit TT Set A, 96 rxns PN-1000215

Next GEM reagents are specific to Next GEM products and should not be used interchangeably with non-Next GEM reagents.

## Notices

### Document Number

CG000315 • Rev B

### Legal Notices

© 2021 10x Genomics, Inc. (10x Genomics). All rights reserved. Duplication and/or reproduction of all or any portion of this document without the express written consent of 10x Genomics, is strictly forbidden. Nothing contained herein shall constitute any warranty, express or implied, as to the performance of any products described herein. Any and all warranties applicable to any products are set forth in the applicable terms and conditions of sale accompanying the purchase of such product. 10x Genomics provides no warranty and hereby disclaims any and all warranties as to the use of any third-party products or protocols described herein. The use of products described herein is subject to certain restrictions as set forth in the applicable terms and conditions of sale accompanying the purchase of such product. A non-exhaustive list of 10x Genomics' marks, many of which are registered in the United States and other countries can be viewed at: [www.10xgenomics.com/trademarks](http://www.10xgenomics.com/trademarks). 10x Genomics may refer to the products or services offered by other companies by their brand name or company name solely for clarity, and does not claim any rights in those third party marks or names. 10x Genomics products may be covered by one or more of the patents as indicated at: [www.10xgenomics.com/patents](http://www.10xgenomics.com/patents). The use of products described herein is subject to 10x Genomics Terms and Conditions of Sale, available at [www.10xgenomics.com/legal-notices](http://www.10xgenomics.com/legal-notices), or such other terms that have been agreed to in writing between 10x Genomics and user. All products and services described herein are intended FOR RESEARCH USE ONLY and NOT FOR USE IN DIAGNOSTIC PROCEDURES.

### Instrument & Licensed Software Updates Warranties

Updates to existing Instruments and Licensed Software may be required to enable customers to use new or existing products. In the event of an Instrument failure resulting from an update, such failed Instrument will be replaced or repaired in accordance with the 10x Limited Warranty, Assurance Plan or service agreement, only if such Instrument is covered by any of the foregoing at the time of such failure. Instruments not covered under a current 10x Limited Warranty, Assurance Plan or service agreement will not be replaced or repaired.

### Support

Email: [support@10xgenomics.com](mailto:support@10xgenomics.com)

10x Genomics

6230 Stoneridge Mall Road

Pleasanton, CA 94588 USA

---

## Document Revision Summary

<b>Document Number</b>	CG000315
<b>Title</b>	Chromium Next GEM Single Cell 3' Reagent Kits v3.1(Dual Index) User Guide
<b>Revision</b>	Rev B
<b>Revision Date</b>	March 2021

### General Changes:

- Updated for general minor consistency of language and terms throughout.

# Table of Contents

Introduction	7
Chromium Next GEM Single Cell 3' Reagent Kits	7
10x Genomics Accessories	11
Recommended Thermal Cyclers	11
Additional Kits, Reagents & Equipment	12
Protocol Steps & Timing	14
Stepwise Objectives	15
Tips and Best Practices	18
Step 1	25
GEM Generation & Barcoding	26
1.1 Prepare Master Mix	27
1.2 Load Chromium Next GEM Chip G	29
1.3 Run the Chromium Controller	30
1.4 Transfer GEMs	31
1.5 GEM-RT Incubation	31
Step 2	32
Post GEM-RT Cleanup & cDNA Amplification	33
2.1 Post GEM-RT Cleanup – Dynabeads	34
2.2 cDNA Amplification	36
2.3 cDNA Cleanup – SPRIselect	37
2.4 cDNA QC & Quantification	38
Step 3	39
3' Gene Expression Dual Index Library Construction	40
3.1 Fragmentation, End Repair & A-tailing	42
3.2 Post Fragmentation, End Repair & A-tailing Double Sided Size Selection – SPRIselect	43
3.3 Adaptor Ligation	44
3.4 Post Ligation Cleanup – SPRIselect	45
3.5 Sample Index PCR	46
3.6 Post Sample Index PCR Double Sided Size Selection – SPRIselect	47
3.7 Post Library Construction QC	48

Sequencing	49
Troubleshooting	53
GEMs	54
Chromium Controller Errors	56
Appendix	57
Post Library Construction Quantification	58
Agilent TapeStation Traces	59
LabChip Traces	60
Oligonucleotide Sequences	61

# Introduction

Chromium Next GEM Single Cell 3' Reagent Kits v3.1 (Dual Index)

10x Genomics Accessories

Recommended Thermal Cyclers

Additional Kits, Reagents & Equipment

Protocol Steps & Timing

Stepwise Objectives

## Chromium Next GEM Single Cell 3' Reagent Kits

## Chromium Next GEM Single Cell 3' Kit v3.1, 16 rxns PN-1000268

Chromium Next GEM Single Cell 3' GEM Kit v3.1  
16 rxns PN-1000123 (store at -20°C)Chromium  
Next GEM  
Single Cell 3'  
GEM Kit v3.1

	#	PN
● RT Reagent B	1	2000165
● RT Enzyme C	1	2000085
● Template Switch Oligo	1	3000228
○ Reducing Agent B	1	2000087
○ Cleanup Buffer	2	2000088
● cDNA Primers	1	2000089
○ Amp Mix	1	2000047

10xGenomics.com

10x  
GENOMICSLibrary Construction Kit  
16 rxns PN-1000190 (store at -20°C)

## Library Construction Kit

	#	PN
● Fragmentation Enzyme	1	2000090
● Fragmentation Buffer	1	2000091
● Ligation Buffer	1	2000092
● DNA Ligase	1	220110
● Adaptor Oligos	1	2000094
○ Amp Mix	1	2000047

10xGenomics.com

10x  
GENOMICS

## Chromium Next GEM Single Cell 3' Gel Bead Kit v3.1, 16 rxns PN-1000122 (store at -80°C)

Chromium  
Next GEM  
Single Cell 3'  
v3.1 Gel Beads

	#	PN
Single Cell 3' v3.1 Gel Beads	2	2000164

10xGenomics.com

10x  
GENOMICS

## Dynabeads™ MyOne™ SILANE PN-2000048 (store at 4°C)

	#	PN
Dynabeads MyOne SILANE	1	2000048

## Chromium Next GEM Single Cell 3' Kit v3.1, 4 rxns PN-1000269

### Chromium Next GEM Single Cell 3' GEM Kit v3.1 4 rxns PN-1000130 (store at -20°C)

#### Chromium Next GEM Single Cell 3' GEM Kit v3.1

	#	PN
● RT Reagent B	1	2000165
● RT Enzyme C	1	2000102
● Template Switch Oligo	1	3000228
○ Reducing Agent B	1	2000087
● Cleanup Buffer	1	2000088
● cDNA Primers	1	2000089
○ Amp Mix	1	2000103

10xGenomics.com

10x  
GENOMICS

### Library Construction Kit 4 rxns PN-1000196 (store at -20°C)

#### Library Construction Kit

	#	PN
● Fragmentation Enzyme	1	2000104
● Fragmentation Buffer	1	2000091
● Ligation Buffer	1	2000092
● DNA Ligase	1	220131
● Adaptor Oligos	1	2000094

10xGenomics.com

10x  
GENOMICS

## Chromium Next GEM Single Cell 3' Gel Bead Kit v3.1, 4 rxns PN-1000129 (store at -80°C)

#### Chromium Next GEM Single Cell 3' v3.1 Gel Beads

	#	PN
Single Cell 3' v3.1 Gel Beads (4 rxns)	1	2000164

10xGenomics.com

10x  
GENOMICS

## Dynabeads™ MyOne™ SILANE PN-2000048 (store at 4°C)

	#	PN
Dynabeads MyOne SILANE	1	2000048



## Chromium Next GEM Single Cell 3' Kit v3.1, 4 rxns PN-1000269

### Chromium Next GEM Single Cell 3' GEM Kit v3.1 4 rxns PN-1000130 (store at -20°C)

Chromium Next GEM Single Cell 3' GEM Kit v3.1		
	#	PN
● RT Reagent B	1	2000165
● RT Enzyme C	1	2000102
● Template Switch Oligo	1	3000228
○ Reducing Agent B	1	2000087
● Cleanup Buffer	1	2000088
● cDNA Primers	1	2000089
○ Amp Mix	1	2000103

10xGenomics.com

10x  
GENOMICS

### Library Construction Kit 4 rxns PN-1000196 (store at -20°C)

Library Construction Kit		
	#	PN
● Fragmentation Enzyme	1	2000104
● Fragmentation Buffer	1	2000091
● Ligation Buffer	1	2000092
● DNA Ligase	1	220131
● Adaptor Oligos	1	2000094

10xGenomics.com

10x  
GENOMICS

### Chromium Next GEM Single Cell 3' Gel Bead Kit v3.1, 4 rxns PN-1000129 (store at -80°C)

Chromium Next GEM Single Cell 3' v3.1 Gel Beads		
	#	PN
Single Cell 3' v3.1 Gel Beads (4 rxns)	1	2000164

10xGenomics.com

10x  
GENOMICS

### Dynabeads™ MyOne™ SILANE PN-2000048 (store at 4°C)

	#	PN
Dynabeads MyOne SILANE	1	2000048

## Chromium Next GEM Chip G Single Cell Kit, 48 rxns PN-1000120 (store at ambient temperature)

Chromium Partitioning Oil		
	#	PN
<input checked="" type="radio"/> Partitioning Oil	6	2000190

Chromium Recovery Agent		
	#	PN
<input type="radio"/> Recovery Agent	6	220016

Chromium Next GEM Chip G & Gaskets		
	#	PN
Chromium Next GEM Chip G	6	2000177
Chip Gasket, 6-pack	1	370017

10xGenomics.com


## Chromium Next GEM Chip G Single Cell Kit, 16 rxns PN-1000127 (store at ambient temperature)

Chromium Partitioning Oil		
	#	PN
<input checked="" type="radio"/> Partitioning Oil	2	2000190


  

Chromium Recovery Agent		
	#	PN
<input type="radio"/> Recovery Agent	2	220016

Chromium Next GEM Chip G & Gaskets		
	#	PN
Chromium Next GEM Chip G	2	2000177
Chip Gasket, 2-pack	1	3000072

10xGenomics.com


## Dual Index Kit TT Set A, 96 rxns PN-1000215 (store at -20°C)

Dual Index Kit TT Set A		
	#	PN
Dual Index Plate TT Set A	1	3000431

## 10x Genomics Accessories

Product	Part Number (Kit)	Part Number (Item)
10x Vortex Adapter	120251	330002
10x Magnetic Separator	120250	230003
Chromium Next GEM Secondary Holder	1000142	3000332

## Recommended Thermal Cyclers

Thermal cyclers used must support uniform heating of 100 µl emulsion volumes.

Supplier	Description	Part Number
Bio-Rad	C1000 Touch Thermal Cycler with 96-Deep Well Reaction Module	1851197
Eppendorf	MasterCycler Pro (discontinued)	North America 950030010 International 6321 000.019
Thermo Fisher Scientific	Veriti 96-Well Thermal Cycler	4375786

## Additional Kits, Reagents & Equipment

The items in the table below have been validated by 10x Genomics and are highly recommended for the Single Cell 3' protocols. Substituting materials may adversely affect system performance. This list does may not include some standard laboratory equipment.






Supplier	Description	Part Number (US)
<b>Plastics</b>		
Eppendorf	PCR Tubes 0.2 ml 8-tube strips DNA LoBind Tubes, 1.5 ml DNA LoBind Tubes, 2.0 ml	Choose either Eppendorf, USA Scientific or Thermo Fisher Scientific PCR 8-tube strips. 951010022 022431021 022431048
USA Scientific	TempAssure PCR 8-tube strip	1402-4700
Thermo Fisher Scientific	MicroAmp 8-Tube Strip, 0.2 ml MicroAmp 8 -Cap Strip, clear	N8010580 N8010535
Rainin	Tips LTS 200UL Filter RT-L200FLR Tips LTS 1ML Filter RT-L1000FLR Tips LTS 20UL Filter RT-L10FLR	30389240 30389213 30389226
<b>Kits &amp; Reagents</b>		
Thermo Fisher Scientific	Nuclease-free Water Low TE Buffer (10 mM Tris-HCl pH 8.0, 0.1 mM EDTA)	AM9937 12090-015
Millipore Sigma	Ethanol, Pure (200 Proof, anhydrous)	E7023-500ML
Beckman Coulter	SPRIselect Reagent Kit	B23318
Bio-Rad	10% Tween 20	1662404
Ricca Chemical Company	Glycerin (glycerol), 50% (v/v) Aqueous Solution	3290-32
Qiagen	Qiagen Buffer EB	19086
<b>Equipment</b>		
VWR	Vortex Mixer Divided Polystyrene Reservoirs VWR Mini Centrifuge (alternatively, use any equivalent mini centrifuge)	10153-838 41428-958 76269-066
Eppendorf	Eppendorf ThermoMixer C Eppendorf SmartBlock 1.5 ml, Thermoblock for 24 reaction vessel (alternatively, use a temperature-controlled Heat Block)	5382000023 5360000038
Rainin	Pipet-Lite Multi Pipette L8-50XLS+ Pipet-Lite Multi Pipette L8-200XLS+ Pipet-Lite Multi Pipette L8-10XLS+ Pipet-Lite Multi Pipette L8-20XLS+ Pipet-Lite LTS Pipette L-2XLS+ Pipet-Lite LTS Pipette L-10XLS+ Pipet-Lite LTS Pipette L-20XLS+ Pipet-Lite LTS Pipette L-100XLS+ Pipet-Lite LTS Pipette L-200XLS+ Pipet-Lite LTS Pipette L-1000XLS+	17013804 17013805 17013802 17013803 17014393 17014388 17014392 17014384 17014391 17014382

## Additional Kits, Reagents & Equipment

The items in the table below have been validated by 10x Genomics and are highly recommended for the Single Cell 3' protocols. Substituting materials may adversely affect system performance. This list may not include some standard laboratory equipment.

Supplier	Description	Part Number (US)
<b>Quantification &amp; Quality Control</b>		
Agilent	2100 Bioanalyzer Laptop Bundle High Sensitivity DNA Kit 4200 TapeStation High Sensitivity D1000 ScreenTape/Reagents High Sensitivity D5000 ScreenTape/Reagents	G2943CA 5067-4626 G2991AA 5067-5584/5067-5585 5067-5592/5067-5593
Thermo Fisher Scientific	Qubit 4.0 Fluorometer Qubit dsDNA HS Assay Kit	Q33238 Q32854
Advanced Analytical	Fragment Analyzer Automated CE System - 12 cap Fragment Analyzer Automated CE System - 48/96 cap High Sensitivity NGS Fragment Analysis Kit	FSv2-CE2F FSv2-CE10F DNF-474
PerkinElmer	LabChip GX Touch HT Nucleic Acid Analyzer DNA High Sensitivity Reagent Kit	CLS137031 CLS760672
KAPA Biosystems	KAPA Library Quantification Kit for Illumina Platforms	KK4824

## Protocol Steps &amp; Timing

Day	Steps	Timing	Stop & Store
2 h	<b>Cell Preparation</b>		
	Dependent on Cell Type	~1-1.5 h	
	<b>Step 1 – GEM Generation &amp; Barcoding</b>		
4 h	1.1 Prepare Reaction Mix	20 min	
	1.2 Load Chromium Next GEM Chip G	10 min	
	1.3 Run the Chromium Controller	18 min	
	1.4 Transfer GEMs	3 min	
	1.5 GEM-RT Incubation	55 min	 4°C ≤72 h or -20°C ≤1 week
6 h	<b>Step 2 – Post GEM-RT Cleanup &amp; cDNA Amplification</b>		
	2.1 Post GEM RT-Cleanup – Dynabead	45 min	
	2.2 cDNA Amplification	40 min	 4°C ≤72 h or -20°C ≤1 week
	2.3 cDNA Cleanup – SPRIselect	20 min	 4°C ≤72 h -20°C ≤4 weeks
	2.4 cDNA QC & Quantification	50 min	
8 h	<b>Step 3 – 3' Gene Expression Library Construction</b>		
	3.1 Fragmentation, End Repair & A-tailing	50 min	
	3.2 Post Fragmentation, End Repair & A-tailing Double Sided Size Selection – SPRIselect	30 min	
	3.3 Adaptor Ligation	25 min	
	3.4 Post Ligation Cleanup- SPRIselect	20 min	
	3.5 Sample Index PCR	40 min	 4°C ≤72 h
	3.6 Post Sample Index PCR Double Sided Size Selection- SPRIselect	30 min	 4°C ≤72 h or -20°C long term
	3.7 Post Library Construction QC	50 min	

## Stepwise Objectives



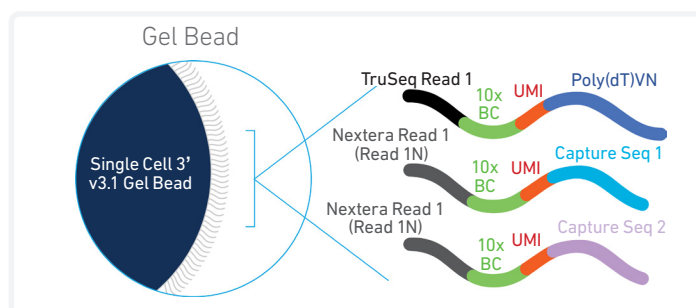
The Chromium Single Cell Gene Expression Solution upgrades short read sequencers to deliver a scalable microfluidic platform for 3' digital gene expression by profiling 500-10,000 individual cells per sample. A pool of ~3,500,000 10x Barcodes are sampled separately to index each cell's transcriptome. It is done by partitioning thousands of cells into nanoliter-scale Gel Beads-in-emulsion (GEMs), where all generated cDNA share a common 10x Barcode. Dual Indexed libraries are generated and sequenced from the cDNA and 10x Barcodes are used to associate individual reads back to the individual partitions.

This document outlines the protocol for generating Single Cell 3' Gene Expression dual index libraries from single cells.

## Single Cell 3' v3.1 Gel Beads

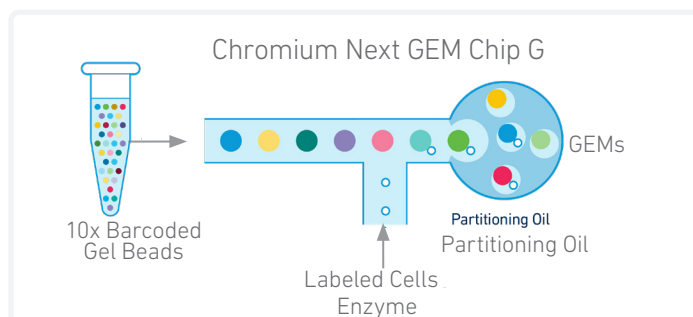
In addition to the poly(dT) primer that enables the production of barcoded, full-length cDNA from poly-adenylated mRNA, the Single Cell 3' v3.1 Gel Beads also include two additional primer sequences (Capture Sequence 1 and Capture Sequence 2), that enable capture and priming of Feature Barcoding technology compatible targets or analytes of interest.

Only the poly(dT) primers are used in this protocol for generating Single Cell 3' Gene Expression libraries.



## Step 1 GEM Generation & Barcoding

GEMs are generated by combining barcoded Single Cell 3' v3.1 Gel Beads, a Master Mix containing cells, and Partitioning Oil onto Chromium Next GEM Chip G. To achieve single cell resolution, cells are delivered at a limiting dilution, such that the majority (~90-99%) of generated GEMs contain no cell, while the remainder largely contain a single cell.



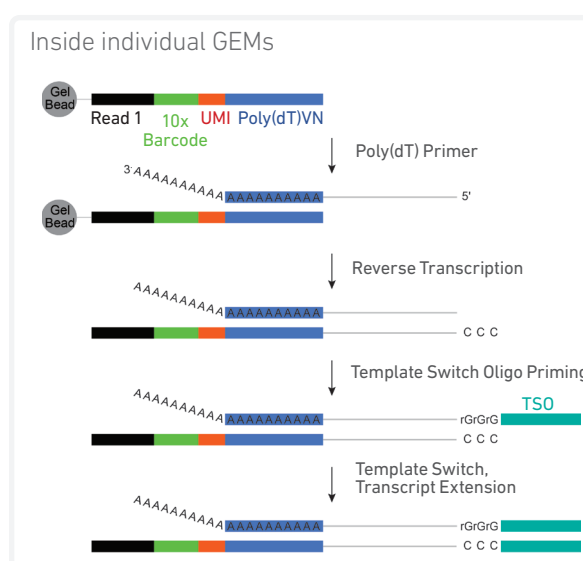
## Step 1 GEM Generation & Barcoding

Immediately following GEM generation, the Gel Bead is dissolved, primers are released, and any co-partitioned cell is lysed.

Primers containing:

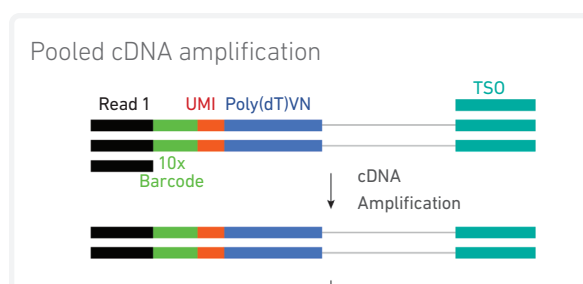
- an Illumina TruSeq Read 1 (read 1 sequencing primer)
- 16 nt 10x Barcode
- 12 nt unique molecular identifier (UMI)
- 30 nt poly(dT) sequence

are mixed with the cell lysate and a Master Mix containing reverse transcription (RT) reagents. Incubation of the GEMs produces barcoded, full-length cDNA from poly-adenylated mRNA.



## Step 2 Post GEM-RT Cleanup & cDNA Amplification

After incubation, GEMs are broken and pooled fractions are recovered. Silane magnetic beads are used to purify the first-strand cDNA from the post GEM-RT reaction mixture, which includes leftover biochemical reagents and primers. Barcoded, full-length cDNA is amplified via PCR to generate sufficient mass for library construction.

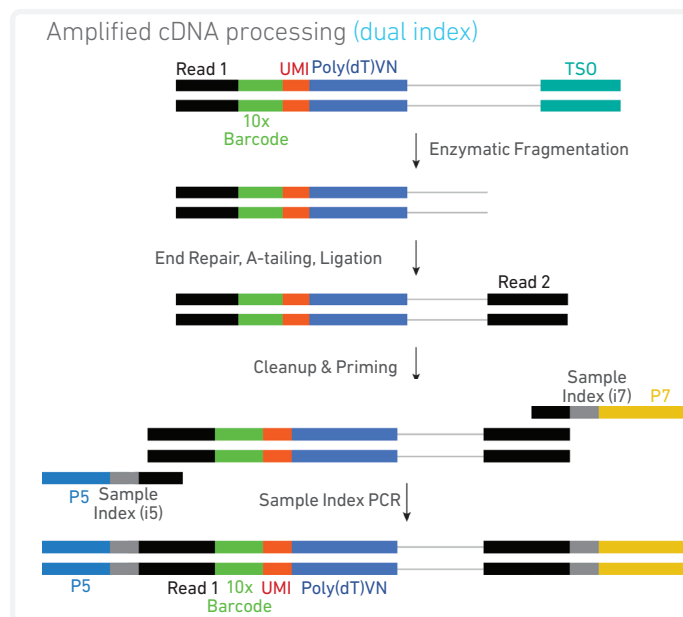




### Step 3 3' Gene Expression Library Construction



Enzymatic fragmentation and size selection are used to optimize the cDNA amplicon size. P5, P7, i7 and i5 sample indexes, and TruSeq Read 2 (read 2 primer sequence) are added via End Repair, A-tailing, Adaptor Ligation, and PCR. The final libraries contain the P5 and P7 primers used in Illumina amplification.

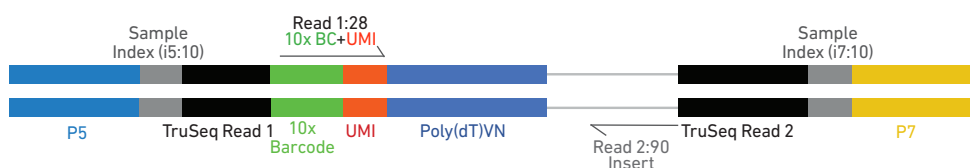


### Step 4 Sequencing

A Chromium Single Cell 3' Gene Expression Dual Index library comprises standard Illumina paired-end constructs which begin and end with P5 and P7. The 16 bp 10x Barcode and 12 bp UMI are encoded in Read 1, while Read 2 is used to sequence the cDNA fragment. i7 and i5 index sequences are incorporated as the sample index reads. TruSeq Read 1 and TruSeq Read 2 are standard Illumina sequencing primer sites used in paired-end sequencing.

Illumina sequencer compatibility, sample indices, library loading and pooling for sequencing are summarized in step 4.

#### Chromium Single Cell 3' Gene Expression Dual Index Library



[See Appendix for Oligonucleotide Sequences](#)

# Tips & Best Practices



TIPS

## Icons



Tips & Best Practices section includes additional guidance



Signifies critical step requiring accurate execution



Troubleshooting section includes additional guidance



Next GEM specific protocol step updates



Dual index specific protocol step updates

## Emulsion-safe Plastics

- Use validated emulsion-safe plastic consumables when handling GEMs as some plastics can destabilize GEMs.

## Cell Concentration

- Recommended starting point is to load ~1,600 cells per reaction, resulting in recovery of ~1000 cells, and a multiplet rate of ~0.8%. The optimal input cell concentration is 700-1,200 cells/ $\mu$ L.
- The presence of dead cells in the suspension may also reduce the recovery rate. Consult the 10x Genomics Single Cell Protocols Cell Preparation Guide and the Guidelines for Optimal Sample Preparation flowchart (Documents CG00053 and CG000126 respectively) for more information on preparing cells.

Multiplet Rate (%)	# of Cells Loaded	# of Cells Recovered
~0.4%	~825	~500
~0.8%	~1,650	~1,000
~1.6%	~3,300	~2,000
~2.4%	~4,950	~3,000
~3.2%	~6,600	~4,000
~4.0%	~8,250	~5,000
~4.8%	~9,900	~6,000
~5.6%	~11,550	~7,000
~6.4%	~13,200	~8,000
~7.2%	~14,850	~9,000
~8.0%	~16,500	~10,000

## General Reagent Handling

- Fully thaw and thoroughly mix reagents before use.
- Keep all enzymes and Master Mixes on ice during setup and use. Promptly move reagents back to the recommended storage.
- Calculate reagent volumes with 10% excess of 1 reaction values.
- Cover Partitioning Oil tubes and reservoirs to minimize evaporation.
- If using multiple chips, use separate reagent reservoirs for each chip during loading.
- Thoroughly mix samples with the beads during bead-based cleanup steps.

## 50% Glycerol Solution

- Purchase 50% glycerol solution from Ricca Chemical Company, Glycerin (glycerol), 50% (v/v) Aqueous Solution, PN-3290-32.
- Prepare 50% glycerol solution:
  - i. Mix an equal volume of water and 99% Glycerol, Molecular Biology Grade.
  - ii. Filter through a 0.2  $\mu$ m filter.
  - iii. Store at  $-20^{\circ}\text{C}$  in 1-ml LoBind tubes. 50% glycerol solution should be equilibrated to room temperature before use.

## Pipette Calibration

- Follow manufacturer's calibration and maintenance schedules.
- Pipette accuracy is particularly important when using SPRIselect reagents.

## Chromium Next GEM Chip Handling

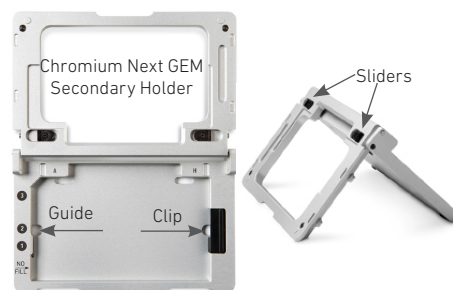


- Minimize exposure of reagents, chips, and gaskets to sources of particles and fibers, laboratory wipes, frequently opened flip-cap tubes, clothing that sheds fibers, and dusty surfaces.
- After removing the chip from the sealed bag, use in  $\leq 24$  h.
- Execute steps without pause or delay, unless indicated. When multiple chips are to be used, load, run, and collect the content from one chip before loading the next.
- Fill all unused input wells in rows labeled 1, 2, and 3 on a chip with an appropriate volume of 50% glycerol solution before loading the used wells. DO NOT add glycerol to the wells in the bottom NO FILL row.
- Avoid contacting the bottom surface of the chip with gloved hands and other surfaces. Frictional charging can lead to inadequate priming of the channels, potentially leading to either clogs or wetting failures.
- Minimize the distance that a loaded chip is moved to reach the Chromium Controller.
- Keep the chip horizontal to prevent wetting the gasket with oil, which depletes the input volume and may adversely affect the quality of the resulting emulsion.

## Chromium Next GEM Secondary Holders

Next  
GEM

- **Chromium Next GEM Secondary Holders** encase Chromium Next GEM Chips.
- The holder lid flips over to become a stand, holding the chip at 45 degrees for optimal recovery well content removal.
- Squeeze the black sliders on the back side of the holder together to unlock the lid and return the holder to a flat position.



## Chromium Next GEM Chip & Holder Assembly

Next  
GEM

- Align notch on the chip (upper left corner) and the holder.
- Insert the left-hand side of the chip under the guide. Depress the right-hand side of the chip until the spring-loaded clip engages.
- Close the lid before dispensing reagents into the wells.



## Chromium Next GEM Chip Loading

Next  
GEM

- Place the assembled chip and holder flat on the bench with the lid closed.
- Dispense at the bottom of the wells without introducing bubbles.
- When dispensing Gel Beads into the chip, wait for the remainder to drain into the bottom of the pipette tips and dispense again to ensure complete transfer.
- Refer to [Load Chromium Next GEM Chip G](#) for specific instructions.



## Gel Bead Handling

Next  
GEM

- Use one tube of Gel Beads per sample. **DO NOT** puncture the foil seals of tubes not used at the time.
- Equilibrate the Gel Beads strip to room temperature before use.
- Store unused Gel Beads at  $-80^{\circ}\text{C}$  and avoid more than 12 freeze-thaw cycles. **DO NOT** store Gel Beads at  $-20^{\circ}\text{C}$ .



- Snap the tube strip holder with the Gel Bead strip into a 10x Vortex Adapter. Vortex **30 sec**.
- Centrifuge the Gel Bead strip for **~5 sec** after removing from the holder. Confirm there are no bubbles at the bottom of the tubes and the liquid levels look even. Place the Gel Bead strip back in the holder and secure the holder lid.
- If the required volume of beads cannot be recovered, place the pipette tips against the sidewalls and slowly dispense the Gel Beads back into the tubes. **DO NOT** introduce bubbles into the tubes and verify that the pipette tips contain no leftover Gel Beads. Withdraw the full volume of beads again by pipetting slowly.

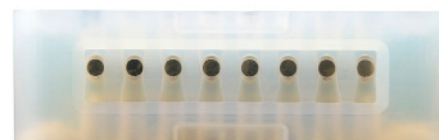
## 10x Gasket Attachment

- After reagents are loaded, attach the gasket by holding the tongue (curved end, to the right) and hook it on the left-hand tabs of the holder. Gently pull the gasket toward the right and hook it on the two right-hand tabs.
- DO NOT touch the smooth side of the gasket. DO NOT press down on the top of the gasket after attachment.
- Keep the assembly horizontal to avoid wetting the gasket with Partitioning Oil.



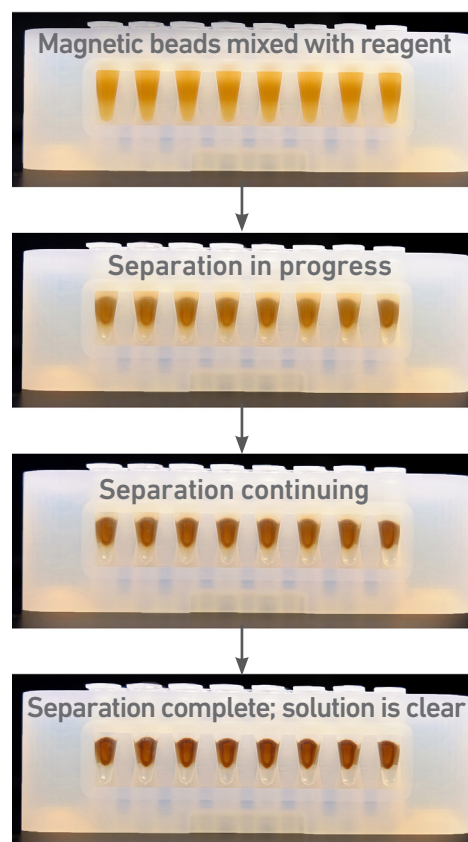
## 10x Magnetic Separator

- Offers two positions of the magnets (high and low) relative to a tube, depending on its orientation. Flip the magnetic separator over to switch between high (magnet•**High**) or low (magnet•**Low**) positions.
- If using MicroAmp 8-Tube Strips, use the high position (magnet•**High**) only throughout the protocol.



## Magnetic Bead Cleanup Steps

- During magnetic bead based cleanup steps that specify waiting “until the solution clears”, visually confirm clearing of solution before proceeding to the next step. See adjacent panel for an example.
- The time needed for the solution to clear may vary based on specific step, reagents, volume of reagents etc.



## SPRIselect Cleanup & Size Selection

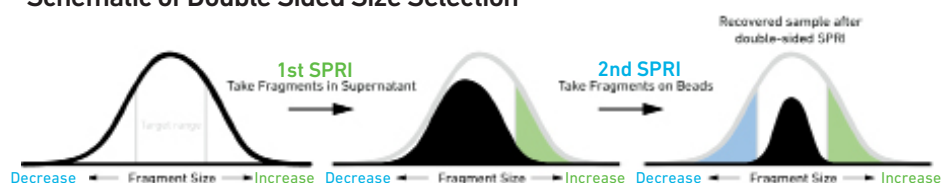
- After aspirating the desired volume of SPRIselect reagent, examine the pipette tips before dispensing to ensure the correct volume is transferred.
- Pipette mix thoroughly as insufficient mixing of sample and SPRIselect reagent will lead to inconsistent results.
- Use fresh preparations of 80% Ethanol.

### Tutorial — SPRIselect Reagent:DNA Sample Ratios

SPRI beads selectively bind DNA according to the ratio of SPRIselect reagent (beads).

Example: Ratio =  $\frac{\text{Volume of SPRIselect reagent added to the sample}}{\text{Volume of DNA sample}} = \frac{50 \mu\text{l}}{100 \mu\text{l}} = 0.5X$

### Schematic of Double Sided Size Selection



After the first SPRI, supernatant is transferred for a second SPRI while larger fragments are discarded (green). After the second SPRI, fragments on beads are eluted and kept while smaller fragments are discarded (blue). Final sample has a tight fragment size distribution with reduced overall amount (black).

### Tutorial — Double Sided Size Selection

**Step a – First SPRIselect:** Add 50  $\mu\text{l}$  SPRIselect reagent to 100  $\mu\text{l}$  sample (0.5X).

Ratio =  $\frac{\text{Volume of SPRIselect reagent added to the sample}}{\text{Volume of DNA sample}} = \frac{50 \mu\text{l}}{100 \mu\text{l}} = 0.5X$

**Step b – Second SPRIselect:** Add 30  $\mu\text{l}$  SPRIselect reagent to supernatant from step a (0.8X).

Ratio =  $\frac{\text{Total Volume of SPRIselect reagent added to the sample (step a + b)}}{\text{Original Volume of DNA sample}} = \frac{50 \mu\text{l} + 30 \mu\text{l}}{100 \mu\text{l}} = 0.8X$

## Enzymatic Fragmentation

- Ensure enzymatic fragmentation reactions are prepared on ice and then loaded into a thermal cycler pre-cooled to 4°C prior to initiating the Fragmentation, End Repair, and A-tailing incubation steps.

## Sample Indices in Sample Index PCR

- Choose the appropriate sample index sets to ensure that no sample indices overlap in a multiplexed sequencing run.
- Verify and use the specified index plate only. DO NOT use the plates interchangeably.
- Each well in the Dual Index Plate TT Set A contains a unique i7 and a unique i5 oligonucleotide.

## Index Hopping Mitigation

Index hopping can impact pooled samples sequenced on Illumina sequencing platforms that utilize patterned flow cells and exclusion amplification chemistry. To minimize index hopping, follow the guidelines listed below.

- Remove adapters during cleanup steps.
- Ensure no leftover primers and/or adapters are present when performing post-Library Construction QC.
- Store each library individually at 4°C for up to 72 h or at –20°C for long-term storage. DO NOT pool libraries during storage.
- Pool libraries prior to sequencing. An additional 1.0X SPRI may be performed for the pooled libraries to remove any free adapters before sequencing.
- Hopped indices can be computationally removed from the data generated from Single Cell 3' Gene Expression dual index libraries.



# Step 1

## GEM Generation & Barcoding

- 1.1 Prepare Single Cell Master Mix
- 1.2 Load Chromium Next GEM Chip G
- 1.3 Run the Chromium Controller
- 1.4 Transfer GEMs
- 1.5 GEM-RT Incubation



## 1.0 GEM Generation & Barcoding

GET STARTED!				
Action	Item	10x PN	Preparation & Handling	Storage
<b>Equilibrate to Room Temperature</b>	Single Cell 3' v3.1 Gel Beads	2000164	Equilibrate to room temperature 30 min before loading the chip.	-80°C
	● RT Reagent B	2000165	Vortex, verify no precipitate, centrifuge briefly.	-20°C
	● Template Switch Oligo	3000228	Centrifuge briefly, resuspend in 80 µl Low TE Buffer. Vortex 15 sec at maximum speed, centrifuge briefly, leave at room temperature for ≥ 30 min. After resuspension, store at -80°C.	-20°C
	○ Reducing Agent B	2000087	Vortex, verify no precipitate, centrifuge briefly.	-20°C
<b>Place on Ice</b>	● RT Enzyme C	2000085/ 2000102	Centrifuge briefly before adding to the mix.	-20°C
	Cell Suspension		-	-
<b>Obtain</b>	● Partitioning Oil	2000190	-	Ambient
	Chromium Next GEM Chip G	2000177	-	Ambient
	10x Gasket	300017/ 3000072	See Tips & Best Practices.	Ambient
	Chromium Next GEM Secondary Holder	3000332	See Tips & Best Practices.	Ambient
	10x Vortex Adapter	330002	See Tips & Best Practices.	Ambient
	50% glycerol solution If using <8 reactions	-	See Tips & Best Practices.	-



Firmware Version 4.0 or higher is required in the Chromium Controller or the Chromium Single Cell Controller used for this Single Cell 3' v3.1 protocol.

## 1.1 Prepare Master Mix

Next  
GEM

a. Prepare Master Mix on ice. Pipette mix 15x and centrifuge briefly.

Master Mix <i>Add reagents in the order listed</i>	PN	1X (μl)	4X + 10% (μl)	8X + 10% (μl)
● RT Reagent B	2000165	18.8	82.7	165.4
● Template Switch Oligo	3000228	2.4	10.6	21.1
○ Reducing Agent B	2000087	2.0	8.8	17.6
● RT Enzyme C	2000085/ 2000102	8.7	38.3	76.6
<b>Total</b>	-	<b>31.9</b>	<b>140.4</b>	<b>280.7</b>

b. Add 31.9 μl Master Mix into each tube of a PCR 8-tube strip on ice.

### Assemble Chromium Next GEM Chip G



After removing the chip from the sealed bag, use the chip in ≤ 24 h.



See Tips & Best Practices for chip handling instructions.

- Align notch on the chip (upper left corner) and the holder.
- Insert the left-hand side of the chip under the guide. Depress the right-hand side of the chip until the spring-loaded clip engages.
- Close the lid before dispensing reagents into the wells.
- The assembled chip is ready for loading the indicated reagents. Refer to step 1.2 for reagent volumes and loading order.



For GEM generation, load the indicated reagents only in the specified rows, starting from row labeled 1, followed by rows labeled 2 and 3. DO NOT load reagents in the bottom row labeled NO FILL. See step 1.2 for details.





## Cell Suspension Volume Calculator Table

(for step 1.2 of Chromium Next GEM Single Cell 3' v3.1 protocol)

Volume of Cell Suspension Stock per reaction (µl) | Volume of Nuclease-free Water per reaction (µl)



DO NOT add nuclease-free water directly to single cell suspension. Add nuclease-free water to the Master Mix. Refer to step 1.2b.

Cell Stock Concentration (Cells/µl)	Targeted Cell Recovery										
	500	1000	2000	3000	4000	5000	6000	7000	8000	9000	10000
100	8.3	16.5	33.0	n/a	n/a	n/a	n/a	n/a	n/a	n/a	n/a
	35.0	26.7	10.2								
200	4.1	8.3	16.5	24.8	33.0	41.3	n/a	n/a	n/a	n/a	n/a
	39.1	35.0	26.7	18.5	10.2	2.0					
300	2.8	5.5	11.0	16.5	22.0	27.5	33.0	38.5	n/a	n/a	n/a
	40.5	37.7	32.2	26.7	21.2	15.7	10.2	4.7			
400	2.1	4.1	8.3	12.4	16.5	20.6	24.8	28.9	33.0	37.1	41.3
	41.1	39.1	35.0	30.8	26.7	22.6	18.5	14.3	10.2	6.1	2.0
500	1.7	3.3	6.6	9.9	13.2	16.5	19.8	23.1	26.4	29.7	33.0
	41.6	39.9	36.6	33.3	30.0	26.7	23.4	20.1	16.8	13.5	10.2
600	1.4	2.8	5.5	8.3	11.0	13.8	16.5	19.3	22.0	24.8	27.5
	41.8	40.5	37.7	35.0	32.2	29.5	26.7	24.0	21.2	18.5	15.7
700	1.2	2.4	4.7	7.1	9.4	11.8	14.1	16.5	18.9	21.2	23.6
	42.0	40.8	38.5	36.1	33.8	31.4	29.1	26.7	24.3	22.0	19.6
800	1.0	2.1	4.1	6.2	8.3	10.3	12.4	14.4	16.5	18.6	20.6
	42.2	41.1	39.1	37.0	35.0	32.9	30.8	28.8	26.7	24.6	22.6
900	0.9	1.8	3.7	5.5	7.3	9.2	11.0	12.8	14.7	16.5	18.3
	42.3	41.4	39.5	37.7	35.9	34.0	32.2	30.4	28.5	26.7	24.9
1000	0.8	1.7	3.3	5.0	6.6	8.3	9.9	11.6	13.2	14.9	16.5
	42.4	41.6	39.9	38.3	36.6	35.0	33.3	31.7	30.0	28.4	26.7
1100	0.8	1.5	3.0	4.5	6.0	7.5	9.0	10.5	12.0	13.5	15.0
	42.5	41.7	40.2	38.7	37.2	35.7	34.2	32.7	31.2	29.7	28.2
1200	0.7	1.4	2.8	4.1	5.5	6.9	8.3	9.6	11.0	12.4	13.8
	42.5	41.8	40.5	39.1	37.7	36.3	35.0	33.6	32.2	30.8	29.5
1300	0.6	1.3	2.5	3.8	5.1	6.3	7.6	8.9	10.2	11.4	12.7
	42.6	41.9	40.7	39.4	38.1	36.9	35.6	34.3	33.0	31.8	30.5
1400	0.6	1.2	2.4	3.5	4.7	5.9	7.1	8.3	9.4	10.6	11.8
	42.6	42.0	40.8	39.7	38.5	37.3	36.1	35.0	33.8	32.6	31.4
1500	0.6	1.1	2.2	3.3	4.4	5.5	6.6	7.7	8.8	9.9	11.0
	42.7	42.1	41.0	39.9	38.8	37.7	36.6	35.5	34.4	33.3	32.2
1600	0.5	1.0	2.1	3.1	4.1	5.2	6.2	7.2	8.3	9.3	10.3
	42.7	42.2	41.1	40.1	39.1	38.0	37.0	36.0	35.0	33.9	32.9
1700	0.5	1.0	1.9	2.9	3.9	4.9	5.8	6.8	7.8	8.7	9.7
	42.7	42.2	41.3	40.3	39.3	38.3	37.4	36.4	35.4	34.5	33.5
1800	0.5	0.9	1.8	2.8	3.7	4.6	5.5	6.4	7.3	8.3	9.2
	42.7	42.3	41.4	40.5	39.5	38.6	37.7	36.8	35.9	35.0	34.0
1900	0.4	0.9	1.7	2.6	3.5	4.3	5.2	6.1	6.9	7.8	8.7
	42.8	42.3	41.5	40.6	39.7	38.9	38.0	37.1	36.3	35.4	34.5
2000	0.4	0.8	1.7	2.5	3.3	4.1	5.0	5.8	6.6	7.4	8.3
	42.8	42.4	41.6	40.7	39.9	39.1	38.3	37.4	36.6	35.8	35.0

Grey boxes: Volumes that would exceed the allowable water volume in each reaction

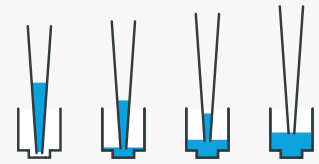
Yellow boxes: Indicate a low transfer volume that may result in higher cell load variability

Blue boxes: Optimal range of cell stock concentration to maximize the likelihood of achieving the desired cell recovery target

## 1.2 Load Chromium NextGEM Chip G



After removing chip from the sealed bag, use in  $\leq 24$  h.  
When loading the chip, raising and depressing the pipette plunger should each take  $\sim 5$  sec.  
When dispensing, raise the pipette tips at the same rate as the liquid is rising, keeping the tips slightly submerged.



### a. Add 50% glycerol solution to each unused well

(if processing  $< 8$  samples/chip)

- 45  $\mu$ l in each unused well in row labeled 3
- 50  $\mu$ l in each unused well in row labeled 2
- 70  $\mu$ l in each unused well in row labeled 1



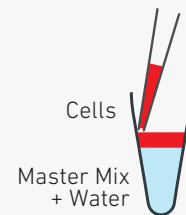
DO NOT add 50% glycerol solution to the bottom row of NO FILL wells.  
DO NOT use any substitute for 50% glycerol solution.

### Glycerol



### b. Prepare Master Mix + Cell suspension

- Refer to the Cell Suspension Volume Calculator Table.
- Add the appropriate volume of nuclease-free water to Master Mix. Add corresponding volume of single cell suspension to Master Mix. Total of 75  $\mu$ l in each tube.
- Gently pipette mix the cell suspension before adding to the Master Mix.



### c. Load Row Labeled 1

- Gently pipette mix the Master Mix + Cell Suspension
- Using the same pipette tip, dispense 70  $\mu$ l Master Mix + Cell Suspension into the bottom center of each well in row labeled 1 without introducing bubbles.

### Master Mix + Sample



### d. Prepare Gel Beads

- Snap the tube strip holder with the Gel Bead strip into a 10x Vortex Adapter. Vortex 30 sec.
- Centrifuge the Gel Bead strip for  $\sim 5$  sec.
- Confirm there are no bubbles at the bottom of the tubes and the liquid levels are even.
- Place the Gel Bead strip back in the holder. Secure the holder lid.

### Prep Gel Beads



### e. Load Row Labeled 2

- Puncture the foil seal of the Gel Bead tubes.
- Slowly aspirate 50  $\mu$ l Gel Beads.
- Dispense into the wells in row labeled 2 without introducing bubbles.
- Wait 30 sec.

### Gel Beads



### f. Load Row Labeled 3

- Dispense 45  $\mu$ l Partitioning Oil into the wells in row labeled 3 from a reagent reservoir.




Failure to add Partitioning Oil to the top row labeled 3 will prevent GEM generation and can damage the Chromium Controller.

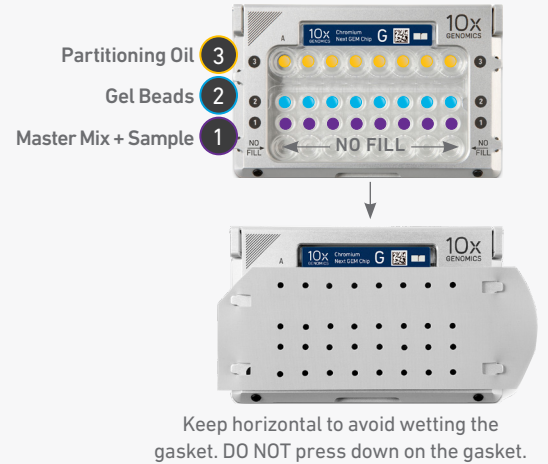
### Partitioning Oil



**g. Attach GEM Gasket**

- Align the notch with the top left-hand corner.
- Ensure the gasket holes are aligned with the wells.
- Avoid touching the smooth surface.

 *Attach the gasket and run the chip in the Chromium Controller immediately after loading the Partitioning Oil.*

**GEM Gasket**

### 1.3 Run the Chromium Controller



- Press the eject button on the Controller to eject the tray.
- Place the assembled chip with the gasket in the tray, ensuring that the chip stays horizontal. Press the button to retract the tray.
- Confirm the Chromium Chip G program on screen. Press the play button.
- At completion of the run (~18 min), the Controller will chime. **Immediately** proceed to the next step.



Firmware Version 4.0 or higher is required in the Chromium Controller or the Chromium Single Cell Controller used for the Single Cell 3' v3.1 protocol.



## 1.4 Transfer GEMs

Next  
GEM

- a. Place a tube strip on ice.
- b. Press the eject button of the Controller and remove the chip.
- c. Discard the gasket. Open the chip holder. Fold the lid back until it clicks to expose the wells at 45 degrees.
- d. Check the volume in rows labeled 1-2. Abnormally high volume in any well indicates a clog.
- e. Slowly aspirate **100 µl** GEMs from the lowest points of the recovery wells in the top row labeled 3 without creating a seal between the tips and the bottom of the wells.
- f. Withdraw pipette tips from the wells. GEMs should appear opaque and uniform across all channels. Excess Partitioning Oil (clear) in the pipette tips indicates a potential clog.
- g. Over the course of **~20 sec**, dispense GEMs into the tube strip on ice with the pipette tips against the sidewalls of the tubes.
- h. If multiple chips are run back-to-back, cap/cover the GEM-containing tube strip and place on ice for no more than **1 h**.



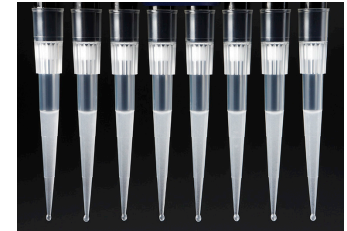
### Expose Wells at 45 Degrees



### Transfer GEMs



### GEMs



## 1.5 GEM-RT Incubation

Use a thermal cycler that can accommodate at least 100 µl volume. A volume of 125 µl is the preferred setting on Bio-Rad C1000 Touch. In alternate thermal cyclers, use highest reaction volume setting.

- a. Incubate in a thermal cycler with the following protocol.

Lid Temperature	Reaction Volume	Run Time
53°C	125 µl	~55 min
Step	Temperature	Time
1	53°C	00:45:00
2	85°C	00:05:00
3	4°C	Hold



- b. Store at **4°C** for up to **72 h** or at **-20°C** for up to **a week**, or proceed to the next step.

# Step 2





## Post GEM-RT Cleanup & cDNA Amplification

- 2.1** Post GEM-RT Cleanup – Dynabeads
- 2.2** cDNA Amplification
- 2.3** cDNA Cleanup – SPRIselect
- 2.4** cDNA QC & Quantification



## 2.0 Post GEM-RT Cleanup & cDNA Amplification



GET STARTED!				
Action	Item	10x PN	Preparation & Handling	Storage
<b>Equilibrate to Room Temperature</b>	Reducing Agent B	2000087	Thaw, vortex, verify no precipitate, centrifuge.	-20°C
	 cDNA Primers	2000089	Vortex, centrifuge briefly.	-20°C
	Dynabeads MyOne SILANE	2000048	Vortex thoroughly (≥30 sec) <b>immediately</b> before adding to the mix.	4°C
	Beckman Coulter SPRIselect Reagent	-	Manufacturer's recommendations.	-
	Agilent Bioanalyzer High Sensitivity Kit If used for QC and quantification	-	Manufacturer's recommendations.	-
	Agilent TapeStation ScreenTape and Reagents If used for QC and quantification	-	Manufacturer's recommendations.	-
	Qubit dsDNA HS Assay Kit If used for QC and quantification	-	Manufacturer's recommendations.	-
<b>Place on ice</b>	 Amp Mix	2000047/ 2000103	Vortex, centrifuge briefly.	-20°C
	 Cleanup Buffer	2000088	Thaw for 10 min at 65°C at max speed on a thermomixer. Verify no visible crystals. Cool to room temperature.	-20°C
<b>Obtain</b>	 Recovery Agent	220016	-	Ambient
	Qiagen Buffer EB	-	Manufacturer's recommendations.	-
	Bio-Rad 10% Tween 20	-	Manufacturer's recommendations.	-
	10x Magnetic Separator	230003	-	Ambient
	Prepare 80% Ethanol Prepare 15 ml for 8 reactions.	-	-	-

## 2.1 Post GEM-RT Cleanup – Dynabeads

Next  
GEM

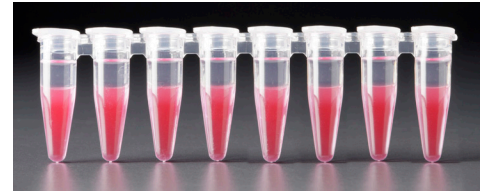
- a. Add **125 µl** Recovery Agent to each sample at room temperature. **DO NOT** pipette mix or vortex the biphasic mixture. Wait **2 min**.

The resulting biphasic mixture contains Recovery Agent/Partitioning Oil (pink) and aqueous phase (clear), with no persisting emulsion (opaque).

If biphasic separation is incomplete:

Firmly secure the cap on the tube strip, ensuring that no liquid is trapped between the cap and the tube rim. Mix by inverting the capped tube strip 5x, centrifuge briefly, and proceed to step b. **DO NOT** invert without firmly securing the caps.

Biphasic Mixture

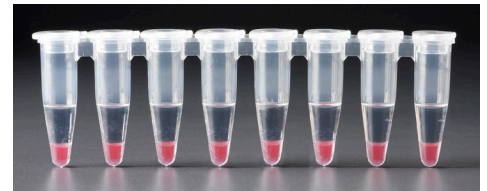


A smaller aqueous phase volume indicates a clog during GEM generation.




- b. Slowly remove and discard **125 µl** Recovery Agent/Partitioning Oil (pink) from the bottom of the tube. **DO NOT** aspirate any aqueous sample.

Remove Recovery Agent



- c. Prepare Dynabeads Cleanup Mix.

Dynabeads Cleanup Mix <i>Add reagents in the order listed</i>	PN	1X (µl)	4X + 10% (µl)	8X + 10% (µl)
● Cleanup Buffer	2000088	182	801	1602
<b>Dynabeads MyOne SILANE</b> Vortex thoroughly (≥30 sec) immediately before adding to the mix.				
 Aspirate the full liquid volume with a pipette tip to verify that the beads have not settled in the bottom of the tube. If clumps are present, pipette mix to resuspend completely. <b>DO NOT</b> centrifuge before use.	2000048	8	35	70
Reducing Agent B	2000087	5	22	44
Nuclease-free Water		5	22	44
<b>Total</b>	-	<b>200</b>	<b>880</b>	<b>1760</b>



- d. Vortex and add **200 µl** to each sample. Pipette mix 10x (pipette set to 200 µl).
- e. Incubate **10 min** at room temperature (keep caps open). Pipette mix again at ~5 min after start of incubation to resuspend settled beads.

Add Dynabeads Cleanup Mix



**f. Prepare Elution Solution I. Vortex and centrifuge briefly.**

Elution Solution I <i>Add reagents in the order listed</i>	PN	1X (μl)	10X (μl)
Buffer EB	-	98	980
10% Tween 20	-	1	10
<input type="radio"/> Reducing Agent B	2000087	1	10
<b>Total</b>	<b>-</b>	<b>100</b>	<b>1000</b>

**TIPS****g. At the end of 10 min incubation, place on a 10x Magnetic Separator•High position (magnet•High) until the solution clears.**

A white interface between the aqueous phase and Recovery Agent is normal.

**h. Remove the supernatant (aqueous phase and Recovery Agent).****i. Add 300 μl 80% ethanol to the pellet while on the magnet. Wait 30 sec.****j. Remove the ethanol.****k. Add 200 μl 80% ethanol to pellet. Wait 30 sec.****l. Remove the ethanol.****m. Centrifuge briefly. Place on the magnet•Low.****n. Remove remaining ethanol. Air dry for 1 min.****o. Remove from the magnet. Immediately add 35.5 μl Elution Solution I.****p. Pipette mix (pipette set to 30 μl) without introducing bubbles.****q. Incubate 2 min at room temperature.****r. Place on the magnet•Low until the solution clears.****s. Transfer 35 μl sample to a new tube strip.**

## 2.2 cDNA Amplification



a. Prepare cDNA Amplification Mix on ice. Vortex and centrifuge briefly.

cDNA Amplification Reaction Mix <i>Add reagents in the order listed</i>	PN	1X (μl)	4X + 10% (μl)	8X + 10% (μl)
○ Amp Mix	2000047/ 2000103	50	220	440
● cDNA Primers	2000089	15	66	132
<b>Total</b>	-	<b>65</b>	<b>286</b>	<b>572</b>

b. Add 65 μl cDNA Amplification Reaction Mix to 35 μl sample.

c. Pipette mix 15x (pipette set to 90 μl). Centrifuge briefly.

d. Incubate in a thermal cycler with the following protocol.

Lid Temperature	Reaction Volume	Run Time
105°C	100 μl	~30-45 min
Step	Temperature	Time
1	98°C	00:03:00
2	98°C	00:00:15
3	63°C	00:00:20
4	72°C	00:01:00
5	Go to Step 2, see table below for total # of cycles	
6	72°C	00:01:00
7	4°C	Hold

The optimal number of cycles is a trade-off between generating sufficient final mass for library construction and minimizing PCR amplification artifacts. The number of cDNA cycles should also be reduced if large numbers of cells are sampled.

Recommended starting point for cycle number optimization.

Targeted Cell Recovery	Total Cycles
<500	13
500–6,000	12
>6,000	11



e. Store at 4°C for up to 72 h or –20°C for ≤1 week, or proceed to the next step.

## 2.3 cDNA Cleanup – SPRIselect

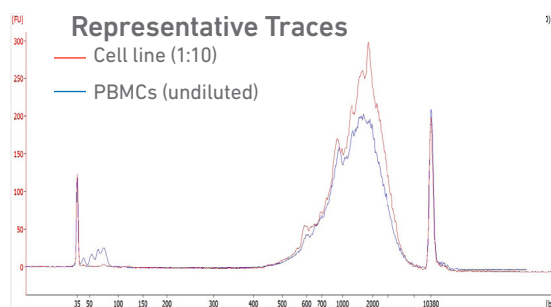
- a. Vortex to resuspend the SPRIselect reagent. Add **60 µl** SPRIselect reagent (**0.6X**) to each sample and pipette mix 15x (pipette set to 150 µl).
- b. Incubate **5 min** at **room temperature**.
- c. Place on the magnet•**High** until the solution clears.
- d. Remove the supernatant.
- e. Add **200 µl** 80% ethanol to the pellet. Wait **30 sec**.
- f. Remove the ethanol.
- g. **Repeat** steps e and f for a total of 2 washes.
- h. Centrifuge briefly and place on the magnet•**Low**.
- i. Remove any remaining ethanol. Air dry for **2 min**. DO NOT exceed **2 min** as this will decrease elution efficiency.
- j. Remove from the magnet. Add **40.5 µl** Buffer EB. Pipette mix 15x (pipette set to 35 µl).
- k. Incubate **2 min** at **room temperature**.
- l. Place the tube strip on the magnet•**High** until the solution clears.
- m. Transfer **40 µl** sample to a new tube strip.
- n. Store at **4°C** for up to **72 h** or at **–20°C** for up to **4 weeks**, or proceed to the next step.



## 2.4

### cDNA QC & Quantification

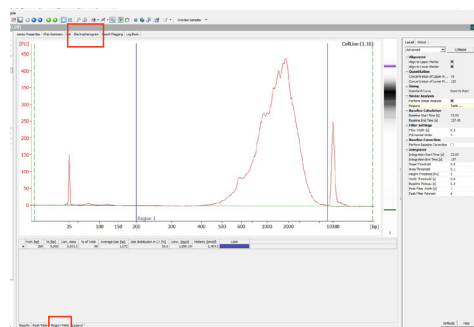
- a. Run 1  $\mu$ l sample (Dilution Factor 1:10) on an Agilent Bioanalyzer High Sensitivity chip. For input cells with low RNA content (<1pg total RNA/cell), 1  $\mu$ l undiluted product may be run. Lower molecular weight product (35 – 150 bp) may be present. This is normal and does not affect sequencing or application performance.



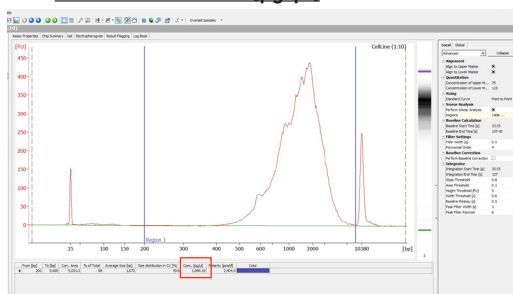
### EXAMPLE CALCULATION

#### i. Select Region

Under the "Electropherogram" view choose the "Region Table". Manually select the region of ~200 – ~9000 bp



#### ii. Note Concentration [pg/ $\mu$ l]



#### iii. Calculate

Multiply the cDNA concentration [pg/ $\mu$ l] reported via the Agilent 2100 Expert Software by the elution volume (40  $\mu$ l) of the Post cDNA Amplification Reaction Clean Up sample (taking any dilution factors into account) and then divide by 1000 to obtain the total cDNA yield in ng.

#### Example Calculation of cDNA Total Yield

Concentration: 1890.19 pg/ $\mu$ l

Elution Volume: 40

Dilution Factor: 10

Total cDNA Yield

$$= \frac{\text{Conc'n (pg/\mu l)} \times \text{Elution Volume (\mu l)} \times \text{Dilution Factor}}{1000 \text{ (pg/ng)}}$$

$$= \frac{1890.19 \text{ (pg/\mu l)} \times 40 \text{ (\mu l)} \times 10}{1000 \text{ (pg/ng)}} = 756.08 \text{ ng}$$



Carry forward **ONLY 25%** of total cDNA yield into 3' Gene Expression Library Construction (step 3)

$$= 0.25 \times \text{Total cDNA yield}$$

$$= 0.25 \times 756.08 = 189.02 \text{ ng}$$

Refer to step 3.5 for appropriate number of Sample Index PCR cycles based on carry forward cDNA yield/input cDNA.

### Alternate Quantification Methods. (See Appendix for representative traces)

- Agilent TapeStation
- LabChip

Agilent Bioanalyzer, Agilent TapeStation, LabChip are the recommended methods for accurate quantification.

(If using Qubit Fluorometer and Qubit dsDNA HS Assay Kit, see Appendix)

# Step 3

## 3' Gene Expression Dual Index Library Construction

- 3.1 Fragmentation, End Repair & A-tailing
- 3.2 Post Fragmentation End Repair & A-tailing Double Sided Size Selection – SPRIselect
- 3.3 Adaptor Ligation
- 3.4 Post Ligation Cleanup – SPRIselect
- 3.5 Sample Index PCR
- 3.6 Post Sample Index PCR Double Sided Size Selection – SPRIselect
- 3.7 Post Library Construction QC

### 3.0 3' Gene Expression Dual Index Library Construction



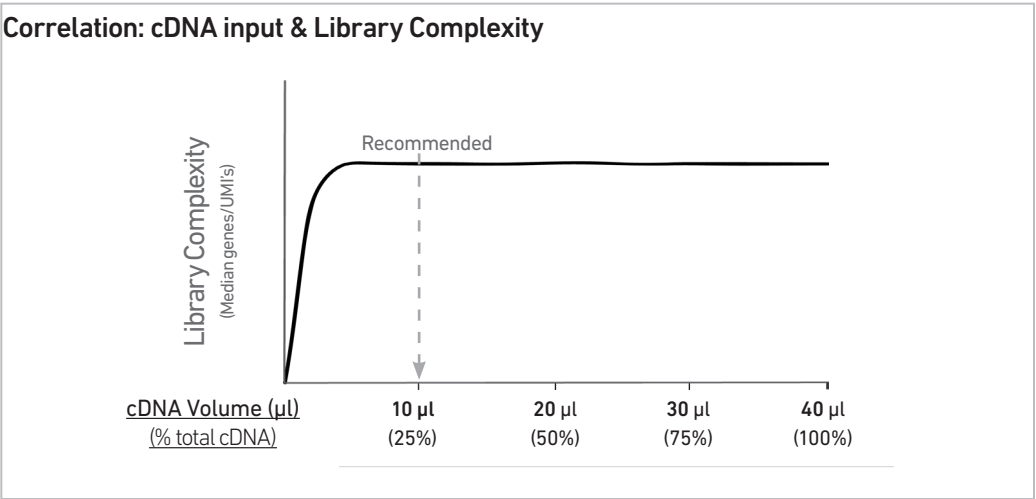
GET STARTED!				
Action	Item	10x PN	Preparation & Handling	Storage
<b>Equilibrate to Room Temperature</b>	<b>Fragmentation Buffer</b>	2000091	Vortex, verify no precipitate, centrifuge briefly.	-20°C
	<b>Adaptor Oligos</b>	2000094	Vortex, centrifuge briefly.	-20°C
	<b>Ligation Buffer</b>	2000092	Vortex, verify no precipitate, centrifuge briefly.	-20°C
	<b>Dual Index Plate TT Set A</b> Verify name & PN Use indicated plate only	3000431	-	-20°C
	<b>Beckman Coulter SPRIselect Reagent</b>	-	Manufacturer's recommendations.	-
	<b>Agilent TapeStation Screen Tape and Reagents</b> If used for QC	-	Manufacturer's recommendations.	-
<b>Place on Ice</b>	<b>Fragmentation Enzyme</b>	2000090/ 2000104	Centrifuge briefly.	-20°C
	<b>DNA Ligase</b>	220110/ 220131	Centrifuge briefly.	-20°C
	<b>Amp Mix</b>	2000047/ 2000103	Centrifuge briefly.	-20°C
	<b>KAPA Library Quantification Kit for Illumina Platforms</b>	-	Manufacturer's recommendations.	-
<b>Obtain</b>	<b>Qiagen Buffer EB</b>	-	-	Ambient
	<b>10x Magnetic Separator</b>	230003	See Tips & Best Practices.	Ambient
	<b>Prepare 80% Ethanol</b> Prepare 20 ml for 8 reactions	-	Prepare fresh.	Ambient



Step Overview  
(Step 3.1d)

Correlation between input & library complexity

A Single Cell 3' Gene Expression library is generated using a fixed proportion (10  $\mu$ l, 25%) of the total cDNA (40  $\mu$ l) obtained at step 2.3A-ix. The complexity of this library will be comparable to one generated using a higher proportion (>25%) of the cDNA. The remaining proportion (30  $\mu$ l, 75%) of the cDNA may be stored at 4°C for up to 72 h or at -20°C for longer-term storage (up to 4 weeks).



Note that irrespective of the total cDNA yield (ng), which may vary based on cell type, targeted cell recovery etc., this protocol has been optimized for a broad range of input mass (ng), as shown in the example below. The total number of SI PCR cycles (step 3.5e) should be optimized based on carrying forward a fixed proportion (10  $\mu$ l, 25%) of the total cDNA yield calculated during Post cDNA Amplification QC & Quantification (step 2.4).

Example: Library Construction Input Mass & SI PCR Cycles					
Cell Type	Targeted Cell Recovery	Total cDNA Yield (ng)	cDNA Input into Fragmentation		SI PCR Cycle Number
			Volume ( $\mu$ l)	Mass (ng)	
High RNA Content	Low	250 ng	10 $\mu$ l	62.5 ng	13
	High	1900 ng	10 $\mu$ l	475 ng	10
Low RNA Content	Low	1 ng	10 $\mu$ l	0.25 ng	16
	High	200 ng	10 $\mu$ l	50 ng	12

### 3.1 Fragmentation, End Repair & A-tailing

- a. Prepare a thermal cycler with the following incubation protocol.

Lid Temperature	Reaction Volume	Run Time
65°C	50 µl	~35 min
Step	Temperature	Time
Pre-cool block <i>Pre-cool block prior to preparing the Fragmentation Mix</i>	4°C	Hold
Fragmentation	32°C	00:05:00
End Repair & A-tailing	65°C	00:30:00
Hold	4°C	Hold



- b. Vortex Fragmentation Buffer. Verify there is no precipitate.  
c. Prepare Fragmentation Mix on ice. Pipette mix and centrifuge briefly.

Fragmentation Mix <i>Add reagents in the order listed</i>	PN	1X (µl)	4X + 10% (µl)	8X + 10% (µl)
● Fragmentation Buffer	2000091	5	22	44
● Fragmentation Enzyme	2000090/ 2000104	10	44	88
Total	-	15	66	132

- d. Transfer **ONLY 10 µl** purified cDNA sample from Pellet Cleanup (step 2.3A-x) to a tube strip.  
Note that only **10 µl** (25%) cDNA sample transfer is sufficient for generating 3' Gene Expression library.  
The remaining **30 µl** (75%) cDNA sample can be stored at **4°C** for up to **72 h** or at **-20°C** for up to **4 weeks** for generating additional 3' Gene Expression libraries.
- e. Add **25 µl** Buffer EB to each sample.
- f. Add **15 µl** Fragmentation Mix to each sample.
- g. Pipette mix 15x (pipette set to 35 µl) on ice. Centrifuge briefly.
- h. Transfer into the pre-cooled thermal cycler (**4°C**) and press “SKIP” to initiate the protocol.

### 3.2 Post Fragmentation, End Repair & A-tailing Double Sided Size Selection – SPRIselect

- a. Vortex to resuspend SPRIselect reagent. Add **30  $\mu$ l** SPRIselect (**0.6X**) reagent to each sample. Pipette mix 15x (pipette set to 75  $\mu$ l).
- b. Incubate **5 min** at **room temperature**.
- c. Place on the magnet•**High** until the solution clears. **DO NOT** discard supernatant.



- d. Transfer **75  $\mu$ l** supernatant to a new tube strip.
- e. Vortex to resuspend SPRIselect reagent. Add **10  $\mu$ l** SPRIselect reagent (**0.8X**) to each sample. Pipette mix 15x (pipette set to 80  $\mu$ l).
- f. Incubate **5 min** at **room temperature**.
- g. Place on the magnet•**High** until the solution clears.



- h. Remove **80  $\mu$ l** supernatant. **DO NOT** discard any beads.
- i. Add **125  $\mu$ l** 80% ethanol to the pellet. Wait **30 sec**.
- j. Remove the ethanol.
- k. **Repeat** steps i and j for a total of 2 washes.
- l. Centrifuge briefly. Place on the magnet•**Low** until the solution clears. Remove remaining ethanol. **DO NOT** over dry to ensure maximum elution efficiency.
- m. Remove from the magnet. Add **50.5  $\mu$ l** Buffer EB to each sample. Pipette mix 15x (pipette set to 45  $\mu$ l).
- n. Incubate **2 min** at **room temperature**.
- o. Place on the magnet•**High** until the solution clears.
- p. Transfer **50  $\mu$ l** sample to a new tube strip.

### 3.3 Adaptor Ligation

a. Prepare Adaptor Ligation Mix. Pipette mix and centrifuge briefly.

Adaptor Ligation Mix <i>Add reagents in the order listed</i>	PN	1X (μl)	4X + 10% (μl)	8X + 10% (μl)
● Ligation Buffer	2000092	20	88	176
● DNA Ligase	220110/ 220131	10	44	88
● Adaptor Oligos	2000094	20	88	176
<b>Total</b>	-	<b>50</b>	<b>220</b>	<b>440</b>

b. Add 50 μl Adaptor Ligation Mix to 50 μl sample. Pipette mix 15x (pipette set to 90 μl). Centrifuge briefly.

c. Incubate in a thermal cycler with the following protocol.

Lid Temperature	Reaction Volume	Run Time
30°C	100 μl	15 min
Step	Temperature	Time
1	20°C	00:15:00
2	4°C	Hold

**3.4****Post Ligation Cleanup –  
SPRIselect**

- a. Vortex to resuspend SPRIselect Reagent. Add **80 µl** SPRIselect Reagent (**0.8X**) to each sample. Pipette mix 15x (pipette set to 150 µl).
- b. Incubate **5 min** at **room temperature**.
- c. Place on the magnet•**High** until the solution clears.
- d. Remove the supernatant.
- e. Add **200 µl** 80% ethanol to the pellet. Wait **30 sec**.
- f. Remove the ethanol.
- g. **Repeat** steps e and f for a total of 2 washes.
- h. Centrifuge briefly. Place on the magnet•**Low**.
- i. Remove any remaining ethanol. Air dry for **2 min**.  
DO NOT exceed **2 min** as this will decrease elution efficiency.
- j. Remove from the magnet. Add **30.5 µl** Buffer EB. Pipette mix 15x.
- k. Incubate **2 min** at **room temperature**.
- l. Place on the magnet•**Low** until the solution clears.
- m. Transfer **30 µl** sample to a new tube strip.

### 3.5 Sample Index PCR

DUAL  
INDEX



- a. Choose the appropriate sample index sets to ensure that no sample indices overlap in a multiplexed sequencing run. Record the 10x Sample Index name (PN-3000431 Dual Index Plate TT Set A well ID) used.
- b. Add **50 µl** Amp Mix (PN-2000047 or 2000103) to **30 µl** sample.
- c. Add **20 µl** of an individual Dual Index TT Set A to each sample and record the well ID used. Pipette mix 5x (pipette set to 90 µl). Centrifuge briefly.
- d. Incubate in a thermal cycler with the following protocol.

Lid Temperature	Reaction Volume	Run Time
105°C	100 µl	~25-40 min
Step	Temperature	Time
1	98°C	00:00:45
2	98°C	00:00:20
3	54°C	00:00:30
4	72°C	00:00:20
5	Go to step 2, see below for # of cycles	
6	72°C	00:01:00
7	4°C	Hold



The total cycles should be optimized based on 25% carry forward cDNA yield/input calculated during cDNA QC & Quantification (step 2.4)

cDNA Input	Total Cycles
0.25-25 ng	14-16
25-150 ng	12-14
150-500 ng	10-12
500-1,000 ng	8-10
1,000-1,500 ng	6-8
>1500 ng	5



- f. Store at **4°C** for up to **72 h** or proceed to the next step.

### 3.6

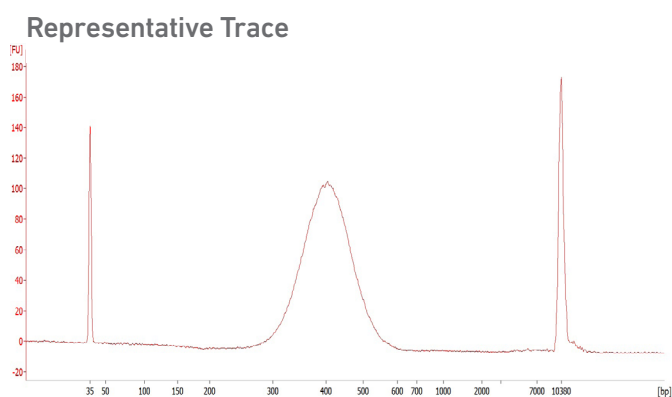
#### Post Sample Index PCR Double Sided Size Selection – SPRIselect

- a. Vortex to resuspend the SPRIselect reagent. Add **60 µl** SPRIselect Reagent (**0.6X**) to each sample. Pipette mix 15x (pipette set to 150 µl).
- b. Incubate **5 min** at **room temperature**.
- c. Place the magnet•**High** until the solution clears. DO NOT discard supernatant.
- d. Transfer **150 µl** supernatant to a new tube strip.
- e. Vortex to resuspend the SPRIselect reagent. Add **20 µl** SPRIselect Reagent (**0.8X**) to each sample. Pipette mix 15x (pipette set to 150 µl).
- f. Incubate **5 min** at **room temperature**.
- g. Place the magnet•**High** until the solution clears.
- h. Remove **165 µl** supernatant. DO NOT discard any beads.
- i. With the tube still in the magnet, add **200 µl** 80% ethanol to the pellet. Wait **30 sec**.
- j. Remove the ethanol.
- k. **Repeat** steps i and j for a total of 2 washes.
- l. Centrifuge briefly. Place on the magnet•**Low**. Remove remaining ethanol.
- m. Remove from the magnet. Add **35.5 µl** Buffer EB. Pipette mix 15x (pipette set to 35 µl).
- n. Incubate **2 min** at **room temperature**.
- o. Place on the magnet•**Low** until the solution clears.
- p. Transfer **35 µl** to a new tube strip.
- q. Store at **4°C** for up to **72 h** or at **-20°C** for **long-term** storage.



### 3.7 Post Library Construction QC

Run 1  $\mu\text{L}$  sample at 1:10 dilution on an Agilent Bioanalyzer High Sensitivity chip. s



Determine the average fragment size from the Bioanalyzer trace. This will be used as the insert size for library quantification.

**Alternate QC Method:**

- Agilent TapeStation
- LabChip

[See Appendix for representative traces](#)

[See Appendix for Post Library Construction Quantification](#)



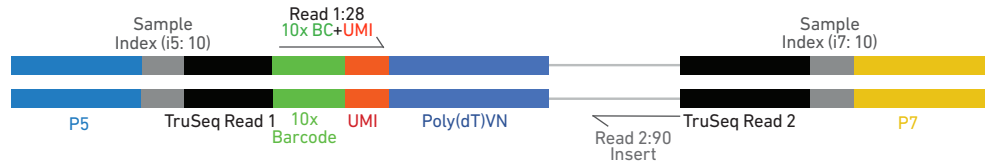
# Sequencing

4

## Sequencing Libraries

Single Cell 3' Gene Expression libraries comprise standard Illumina paired-end constructs which begin with P5 and end with P7. 16 bp 10x Barcodes are encoded at the start of TruSeq Read 1, while 10 bp i5 and i7 sample index sequences are incorporated as sample index reads. TruSeq Read 1 and Read 2 are standard Illumina sequencing primer sites used in paired-end sequencing. TruSeq Read 1 is used to sequence 16 bp 10x Barcodes and 12 bp UMI. Sequencing these libraries produces a standard Illumina BCL data output folder.

Chromium Single Cell 3' Gene Expression Dual Index Library



## Illumina Sequencer Compatibility

The compatibility of the listed sequencers has been verified by 10x Genomics. Some variation in assay performance is expected based on sequencer choice. For more information about performance variation, visit the 10x Genomics Support website.

- MiSeq
- NextSeq 500/550
- HiSeq 2500 (Rapid Run)
- HiSeq 3000/4000
- NovaSeq

## Sample Indices

Each sample index in the Dual Index Kit TT Set A (PN-1000215) is a mix of one unique i7 and one unique i5 sample index. If multiple samples are pooled in a sequence lane, the sample index name (i.e. the Dual Index TT Set A plate well ID, SI-TT-) is needed in the sample sheet used for generating FASTQs with "cellranger mkfastq". Samples utilizing the same sample index should not be pooled together, or run on the same flow cell lane, as this would not enable correct sample demultiplexing.

### 3' Gene Expression Library Sequencing Depth & Run Parameters

<b>Sequencing Depth</b>	Minimum 20,000 read pairs per cell
<b>Sequencing Type</b>	Paired-end, dual indexing
<b>Sequencing Read</b>	Recommended Number of Cycles
Read 1	28 cycles
i7 Index	10 cycles
i5 Index	10 cycles
Read 2	90 cycles

### Library Loading

Once quantified and normalized, the 3' Gene Expression libraries should be denatured and diluted as recommended for Illumina sequencing platforms. Refer to Illumina documentation for denaturing and diluting libraries. Refer to the 10x Genomics Support website, for more information.

Instrument	Loading Concentration (pM)	PhiX (%)
MiSeq	11	1
NextSeq 500/550	1.8	1
HiSeq 2500 (RR)	11	1
HiSeq 4000	240	1
NovaSeq	150*/300	1

\* Use 150 pM loading concentration for Illumina XP workflow.

### Library Pooling

The 3' Gene Expression libraries may be pooled for sequencing, taking into account the differences in cell number and per-cell read depth requirements between each library. Samples utilizing the same sample index should not be pooled together, or run on the same flow cell lane, as this would not enable correct sample demultiplexing.

## Data Analysis and Visualization

Sequencing data may be analyzed using Cell Ranger or 10x Genomics Cloud Analysis and visualized using Loupe Browser. Key features for these tools are listed below. For detailed product-specific information, visit the 10x Genomics Support website.

### Cell Ranger

Cell Ranger is a set of analysis pipelines that processes Chromium Single Gene Expression data to align reads, generate Feature Barcode matrices and perform clustering and gene expression analysis.

- Input: Base call (BCL) and FASTQ
- Output: BAM, MEX, CSV, HDF5, Web Summary, .cloupe/.loupe
- Operating System: Linux



### Cloud Analysis

*Cloud Analysis is currently only available for US customers.*

Cloud Analysis allows users to run Cell Ranger analysis pipelines from a web browser while computation is handled in the cloud.

- Key features: scalable, highly secure, simple to set up and run
- Input: FASTQ
- Output: BAM, MEX, CSV, HDF5, Web Summary, .cloupe/.loupe.



### Loupe Browser

Loupe Browser is an interactive data visualization tool that requires no prior programming knowledge.

- Input: .cloupe
- Output: Data visualization, including t-SNE and UMAP projections, custom clusters, differentially expressed genes
- Operating System: MacOS, Windows



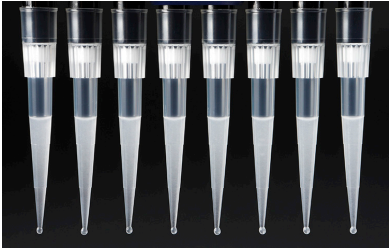
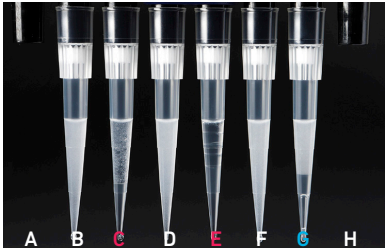


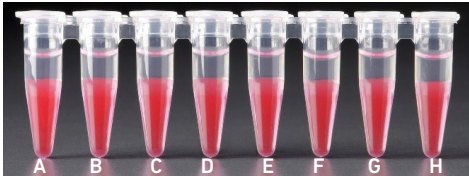
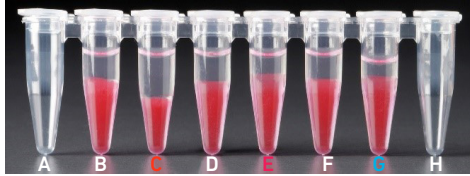
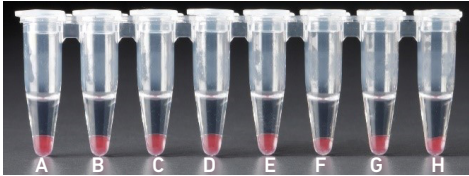
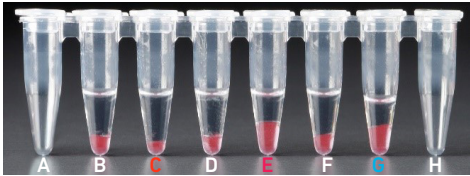
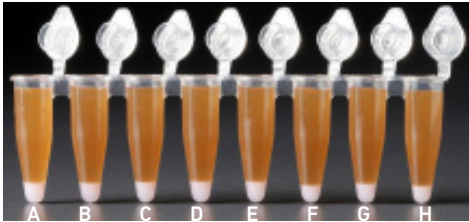
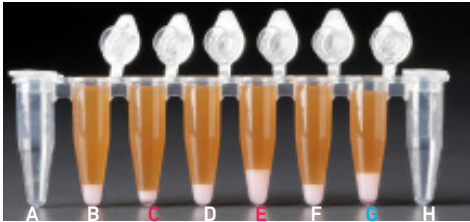
# Troubleshooting



5

## GEMs

STEP	NORMAL	REAGENT CLOGS & WETTING FAILURES
<p>1.4 d</p> <p>After Chip G is removed from the Controller and the wells are exposed</p>	 <p>All 8 recovery wells are similar in volume and opacity.</p>	 <p>Recovery well G indicates a reagent clog. Recovery well C and E indicate a wetting failure. Recovery wells B, D, and F are normal. Wells A and H contain 50% Glycerol Solution.</p>
<p>1.4 f</p> <p>Transfer GEMs from Chip G Row Labeled 3</p>	 <p>All liquid levels are similar in volume and opacity without air trapped in the pipette tips.</p>	 <p>Pipette tips <b>C</b> and <b>E</b> indicate a wetting failure. Pipette tip <b>C</b> contains partially emulsified GEMs. Emulsion is absent in pipette tip <b>E</b>. Pipette tip <b>G</b> indicates a reagent clog.</p>

STEP	NORMAL	REAGENT CLOGS & WETTING FAILURES
<p>2.1 a</p> <p>After transfer of the GEMs + Recovery Agent</p>	 <p>All liquid levels are similar in the aqueous sample volume (clear) and Recovery Agent/Partitioning Oil (pink).</p>	 <p>Tube <b>G</b> indicates a reagent clog has occurred. There is a decreased volume of aqueous layer (clear).            Tube <b>C</b> and <b>E</b> indicate a wetting failure has occurred. There is an abnormal volume of Recovery Agent/Partitioning Oil (pink).</p>
<p>2.1 b</p> <p>After aspiration of Recovery Agent/ Partitioning Oil</p>	 <p>All liquid volumes are similar in the aqueous sample volume (clear) and residual Recovery Agent/Partitioning Oil (pink).</p>	 <p>Tube <b>G</b> indicates a reagent clog has occurred. There is a decreased volume of aqueous layer (clear). There is also a greater residual volume of Recovery Agent/Partitioning Oil (pink).            Tube <b>C</b> and <b>E</b> indicate a wetting failure has occurred. There is an abnormal residual volume of Recovery Agent/Partitioning Oil (pink).</p>
<p>2.1 d</p> <p>After addition of Dynabeads Cleanup Mix</p>	 <p>All liquid volumes are similar after addition of the Dynabeads Cleanup Mix.</p>	 <p>Tube <b>G</b> indicates a reagent clog has occurred. There is an abnormal ratio of Dynabeads Cleanup Mix (brown) to Recovery Agent/Partitioning Oil (appears white).            Tube <b>C</b> and <b>E</b> indicate a wetting failure has occurred. There is an abnormal ratio of Dynabeads Cleanup Mix (brown) to Recovery Agent/Partitioning Oil (appears white).</p>

If a channel clogs or wetting failure occurs during GEM generation, it is recommended that the sample be remade. If any of the listed issues occur, take a picture and send it to [support@10xgenomics.com](mailto:support@10xgenomics.com) for further assistance.

## Chromium Controller Errors

If the Chromium Controller or the Chromium Single Cell Controller fails to start, an error tone will sound and one of the following error messages will be displayed:

- a. **Chip not read – Try again:** Eject the tray, remove and/or reposition the Chromium Next GEM Secondary Holder assembly and try again. If the error message is still received after trying this more than twice, contact [support@10xgenomics.com](mailto:support@10xgenomics.com) for further assistance.
- b. **Check gasket:** Eject the tray by pressing the eject button to check that the 10x Gasket is correctly installed on the Chromium Next GEM Chip. If the error message persists, contact [support@10xgenomics.com](mailto:support@10xgenomics.com) for further assistance.
- c. **Error Detected: Row \_ Pressure:**
  - i. If this message is received within a few seconds of starting a run, eject the tray by pressing the eject button and check for dirt or deposits on the 10x Gasket. If dirt is observed, replace with a new 10x Gasket and try again. If the error message is still received after trying this more than twice, contact [support@10xgenomics.com](mailto:support@10xgenomics.com) for further assistance.
  - ii. If this message is received after a few minutes into the run, the Chromium Next GEM Chip must be discarded. **Do not try running this Chromium Next GEM Chip again as this may damage the Chromium Controller.**
- d. **Invalid Chip CRC Value:** This indicates that a Chromium Next GEM Chip has been used with an older firmware version. The chip must be discarded. Contact [support@10xgenomics.com](mailto:support@10xgenomics.com) for further assistance.
- e. **Chip Holder Not Present:** Open the controller drawer and check if chip holder is present. Insert chip properly into chip holder and retry.
- f. **Unauthorized Chip:** This indicates that an incompatible non-Next GEM chip has been used with an instrument that only can run Next GEM assays. Use only Chromium Controller (PN-120223;120246) or Chromium Single Cell Controller (PN-120263;120212) to run that chip or chip must be discarded. Contact [support@10xgenomics.com](mailto:support@10xgenomics.com) for further assistance.
- g. **Endpoint Reached Early:** If this message is received, contact [support@10xgenomics.com](mailto:support@10xgenomics.com) for further assistance.



# Appendix

Post Library Construction Quantification

Agilent TapeStation Traces

LabChip Traces


Oligonucleotide Sequences

## Post Library Construction Quantification

- a. Thaw KAPA Library Quantification Kit for Illumina Platforms.
- b. Dilute 2  $\mu$ l sample with deionized water to appropriate dilutions that fall within the linear detection range of the KAPA Library Quantification Kit for Illumina Platforms. (For more accurate quantification, make the dilution(s) in duplicate).
- c. Make enough Quantification Master Mix for the DNA dilutions per sample and the DNA Standards (plus 10% excess) using the guidance for 1 reaction volume below.

Quantification Master Mix	1X ( $\mu$ l)
SYBR Fast Master Mix + Primer	12
Water	4
Total	16

- d. Dispense 16  $\mu$ l Quantification Master Mix for sample dilutions and DNA Standards into a 96 well PCR plate.
- e. Add 4  $\mu$ l sample dilutions and 4  $\mu$ l DNA Standards to appropriate wells. Centrifuge briefly.
- f. Incubate in a thermal cycler with the following protocol.

Step	Temperature	Run Time
1	95°C	00:03:00
2	95°C	00:00:05
3	67°C	00:00:30
	 Read signal	
4	Go to Step 2, 29X (Total 30 cycles)	

- g. Follow the manufacturer's recommendations for qPCR-based quantification. For library quantification for sequencer clustering, determine the concentration based on insert size derived from the Bioanalyzer/TapeStation trace.

## Agilent TapeStation Traces

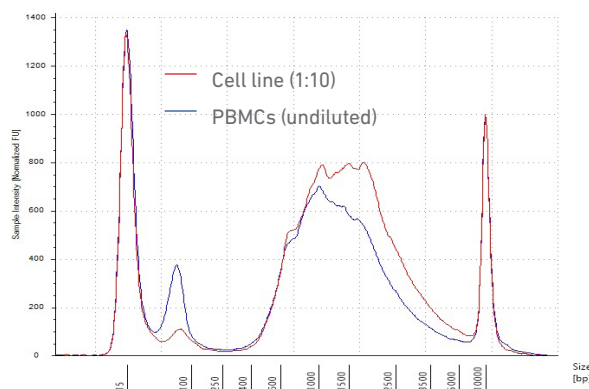
### Agilent TapeStation Traces

Agilent TapeStation High Sensitivity D5000 ScreenTape<sup>®</sup> was used.

Protocol steps correspond to the Chromium Next GEM Single Cell 3' Reagent Kits v3.1 (Dual Index) User Guide (CG000315).

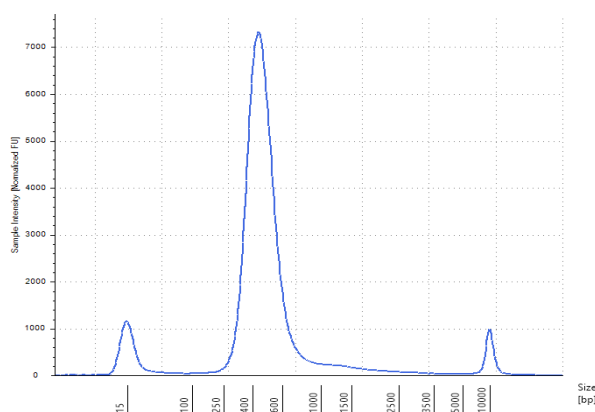
#### Protocol Step 2.4 – cDNA QC & Quantification

Run 2  $\mu$ l sample mixed with 2  $\mu$ l loading buffer. Ensure dilution factor is factored in when calculating cDNA yield/ $\mu$ l (divide by 2).



#### Protocol Step 3.7 – Post Library Construction QC

Run 2  $\mu$ l diluted sample (1:10 dilution) mixed with 2  $\mu$ l loading buffer.



All traces are representative.

## LabChip Traces

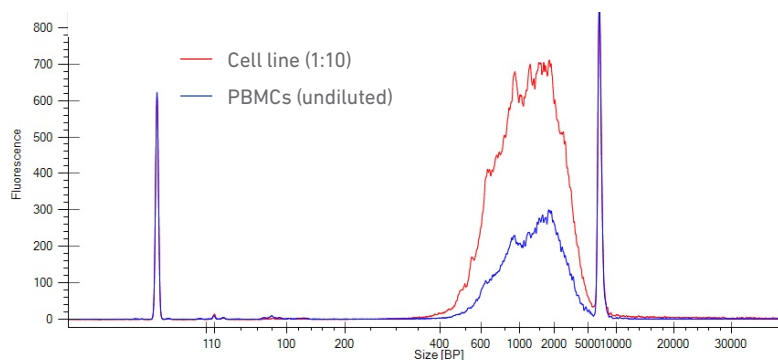
### LabChip Traces

DNA High Sensitivity Reagent Kit was used.

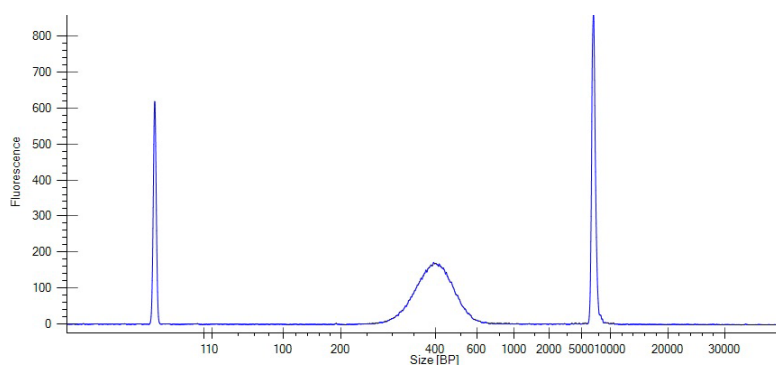
Protocol steps correspond to the Chromium Next GEM Single Cell 3' Reagent Kits v3.1 (Dual Index) User Guide (CG000315).

#### Protocol Step 2.4 – cDNA QC & Quantification

Run 10  $\mu$ l sample. cDNA yield calculation is same as Agilent Bioanalyzer traces.



#### Protocol Step 3.7 – Post Library Construction QC



Run 10  $\mu$ l diluted sample (1:10 dilution).

All traces are representative.

#### Alternate QC Method:

##### Qubit Fluorometer and Qubit dsDNA HS Assay Kit

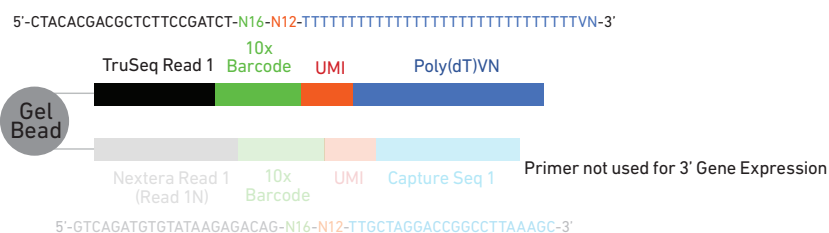
Multiply the cDNA concentration reported via the Qubit Fluorometer by the elution volume (40  $\mu$ l) to obtain the total cDNA yield in ng. To determine the equivalent range using the Agilent 2100 Expert Software, select the region encompassing 35-10,000 bp.

## Oligonucleotide Sequences

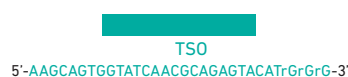
Protocol steps correspond to the Chromium Next GEM Single Cell 3 Reagent Kits v3.1 (Dual Index) User Guide (CG000315)

### Protocol Step 1.5 – GEM-RT Incubation

Gel Bead  
Primers



● Template Switch  
Oligo  
PN-3000228





PCR Product



### Protocol Step 2.2 – cDNA Amplification

● cDNA Primers  
PN-2000089

Forward Primer:   
Partial Read 1  
5'-CTACACGACGCTCTCCGATCT-3'


Reverse Primer:   
Partial TSO  
5'-AAGCAGTGGTATCAACGCAGAG-3'

Amplification  
Products



### Protocol Step 3.3 – Adaptor Ligation

● Adaptor Oligos  
PN-2000094

  
Partial Read 2  
5'-GATCGGAAGAGCACAGCTCTGAAGTCCAGTCAC-3'  
3'-TCTAGCCTTCTCG-5'

Ligation  
Product



## Oligonucleotide Sequences

### Protocol Step 3.5 – Sample Index PCR

Dual Index

Plate TT

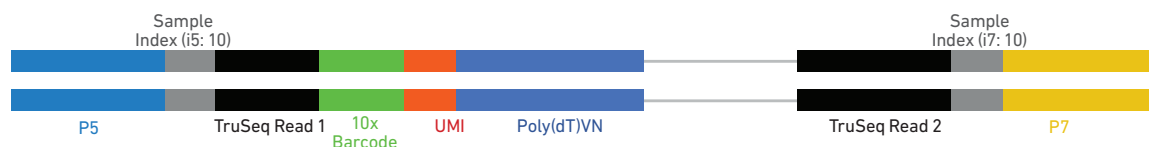
Set A

PN-1000215

P5 Sample Index (i5) Partial Read 1
   
 5'-AATGATACGGCGACCGAGATCTACAC-N10-ACACTCTTCCCTACACGACGCTC-3'

P7 Sample Index (i7) Partial Read 2
   
 5'-CAAGCAGAAGACGGCATACGAGAT-N10-GTGACTGGAGTTTCAGACGTGT-3'

Sample  
Index PCR  
Product



5'-AATGATACGGCGACCGAGATCTACAC-N10-ACACTCTTCCCTACACGACGCTCTCCGATCT-N16-N12-TTTTTTTTTTTTTTTTTTTTTTTTTTTTNN-cDNA\_Insert-AGATCGGAAGAGCACACGTCTGAACTCCAGTCAC-N10-ATCTCGTATGCCGCTCTCTGCTTC-3'
   
 3'-TTACTATGCCGCTGGTGGCTCTAGATGTG-N10-TGTGAGAAAGGGATGTGCTGCGAGAAAGGCTAGA-N16-N12-AAAAAAAAAAAAAAAAAAAAAAAAAAAAAABN-cDNA\_Insert-TCTAGCCTTCTCGTGTGCGAGCTTGAGGTCAGTG-N10-TAGAGCATACGGCAGAGACGAAC-5'