

Chromium™

Single Cell Controller Readiness Test

FOR USE WITH

Chromium™ Single Cell Controller & Accessory Kit

PN-120263



Notices

Manual Part Number

CG00051 Rev A

Legal Notices

© 2016 10x Genomics, Inc. All rights reserved. Duplication and/or reproduction of all or any portion of this document without the express written consent of 10x Genomics, Inc., is strictly forbidden. Nothing contained herein shall constitute any warranty, express or implied, as to the performance of any products described herein. Any and all warranties applicable to any products are set forth in the applicable terms and conditions of sale accompanying the purchase of such product. 10x Genomics provides no warranty and hereby disclaims any and all warranties as to the use of any third party products or protocols described herein. The use of products described herein is subject to certain restrictions as set forth in the applicable terms and conditions of sale accompanying the purchase of such product. "10x", "10x Genomics", "Changing the Definition of Sequencing", "Chromium", "GemCode", "Loupe", "Long Ranger", "Cell Ranger" and "Supernova" are trademarks of 10x Genomics, Inc. All other trademarks are the property of their respective owners. All products and services described herein are intended FOR RESEARCH USE ONLY and NOT FOR USE IN DIAGNOSTIC PROCEDURES.

Customer Information and Feedback

For technical information or advice, please contact our Customer Technical Support Division online at any time.

Email: support@10xgenomics.com

10x Genomics

7068 Koll Center Parkway

Suite 401

Pleasanton, CA 94566 USA

Chromium™ Controller Accessory Kit

Product	Description	#	Part Number
Chromium™ Controller Accessory Kit			110204
	Power Cord	1	34000X
	10x™ Vortex Adapter	3	330002
	10x™ Chip Holder	2	330019
	10x™ Gasket (3 pack)	1	-
	10x™ Vortex Clip	2	230002
	10x™ Magnetic Separator	2	230003
	Chromium Test Chip V1	1	230024

1. Turn on the Chromium™ Single Cell Controller

- a) Ensure the Chromium Single Cell Controller is positioned in accordance with recommendations in the Chromium Single Cell Controller Specifications.
- b) Turn on the Chromium Single Cell Controller using the power switch on the back of the unit.

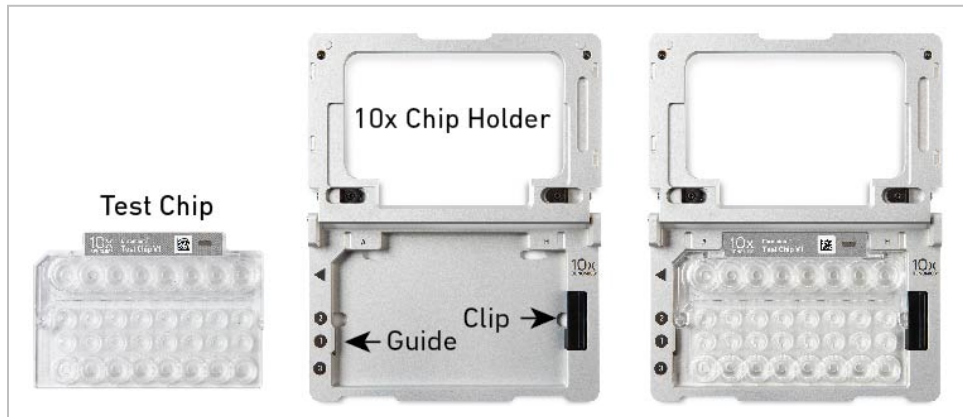


- c) The Chromium Single Cell Controller touchscreen will indicate initialization is in progress.
- d) When initialization is complete, press the button on the touchscreen of the Chromium Single Cell Controller to eject the tray and remove the foam strip used for protection during shipping. Press the button again to retract the tray (or the tray will automatically close after 40 sec).



2. Assemble a Test Chip and a 10x™ Chip Holder

- a) Align the notch on the upper left corner of the Test Chip with the notch on the 10x Chip Holder and insert the left-hand side of the Test Chip under the guide.
- b) Depress the right-hand side of the Test Chip until the spring-loaded clip engages the Test Chip.



- c) Close the hinged lid of the 10x Chip Holder. After loading the Test Chip, the 10x Chip Holder should lay flat on the bench top with the lid closed.

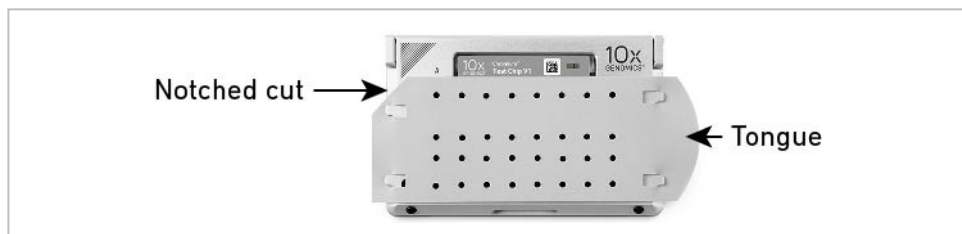


- d) Orient the assembly so that the Partitioning Oil wells (row labeled 3) are toward you.

3. Attach a Gasket & Run the Chromium™ Single Cell Controller

3.1. Attach a 10x™ Gasket

- a) The notched cut of the 10x Gasket should be at the top left corner. Hold the 10x Gasket by the tongue and hook it on the left-hand tabs of the 10x Chip Holder. Gently pull the 10x Gasket toward the right and hook it on the two right-hand tabs. Ensure the 10x Gasket holes are aligned with the wells. Avoid touching the smooth side of the 10x Gasket and do not press down on the top of the 10x Gasket after attachment.



3.2. Run the Chromium™ Single Cell Controller

- a) Press the button on the touchscreen of the Chromium Single Cell Controller to eject the tray.

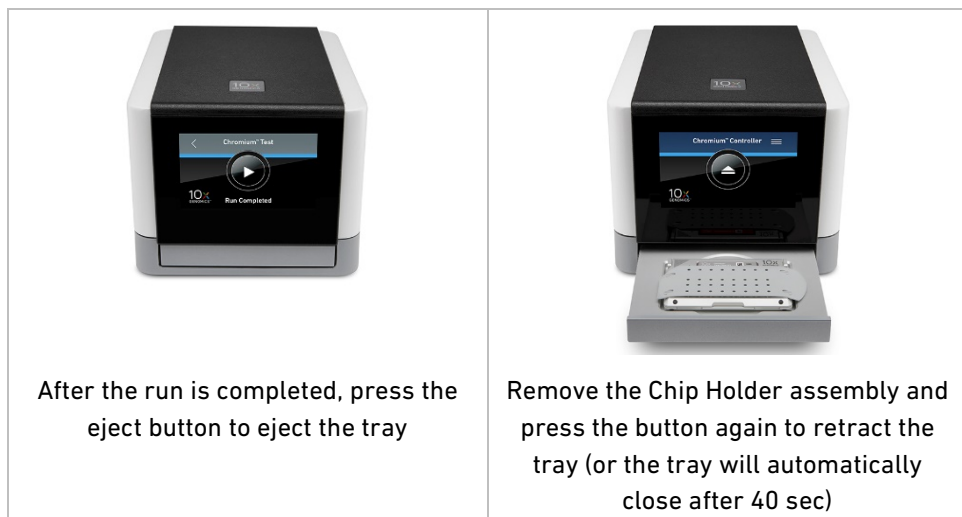


READINESS TEST

- b) Place the Test Chip assembled in 10x™ Chip Holder with a 10x™ Gasket installed on the tray (align the diagonal etchings on the top left corner of the 10x Chip Holder and the back left corner of the tray).
- c) Press the button to retract the tray. Confirm the Chromium™ Test program shows on screen and press the play button to begin the run.



- d) At the completion of the run (3 min), the Chromium Single Cell Controller will chime. Press the button to eject the tray. Remove and disassemble the Chip Holder assembly. Press the button again to retract the empty tray (or the tray will automatically close after 40 sec).



- e) If there are any problems during this process, contact support@10xgenomics.com for further assistance.
- f) Save the 10x Chip Holder for use with your Chromium Single Cell Controller. The 10x Gasket and Test Chip should also be stored.