

TECHNICAL NOTE

QC of Chromium™ Genome v2 Libraries: Qualitative Evaluation Using Agilent Bioanalyzer

INTRODUCTION

Preparation of Chromium™ Genome v2 libraries follows a protocol that includes DNA extraction/ quantitation, GEM preparation, amplification and size selection followed by the actual Library construction. Within the workflow are points where the success of the procedure may be monitored. This Technical Note highlights some of the QC procedures used in library preparation with a focused discussion on evaluation of insert sizes as a QC metric.

DISCUSSION

The current method for qualitative evaluation of Chromium™ Genome libraries is through analysis with either the Agilent Bioanalyzer DNA1000 chip or the Agilent TapeStation D1000 ScreenTape chip and quantification with qPCR. To QC the final library, 1 µl of the Genome library is run on the Bioanalyzer or TapeStation. The traces in Fig. 1 are from Section 4.6 of the Chromium™ Genome Reagent Kits v2 User Guide (CG00043). In Fig. 2, we provide additional Bioanalyzer traces of libraries that were successfully sequenced. These traces are typical of Chromium™ Genome v2 libraries and were all generated using Human gDNA purified with the QIAGEN® MagAttract® HMW Kit per the Chromium™ Reagent Kits v2 User Guide.

Note the different peak values and curve shapes for each library indicating different means and distributions of size for the library fragments. Importantly, all of these libraries generated successful sequencing results. Therefore, the shape and bp size of the peak in the trace are not correlated with sequencing success and overall application performance. We look for traces with a significant amount of inserts of 400 bp – 600 bp in length, similar to what is seen in the traces in Fig. 1 and Fig. 2. Inserts in this size range are optimal for cluster formation in Illumina® flowcells. If the peak of the fragment distribution curve on the Bioanalyzer trace is within a 400 bp to 1000 bp range and the curve distribution indicates the presence of inserts from 400 bp to 600 bp **we encourage customers to sequence the sample and review the application results**. The presence of larger fragments does not affect application performance.

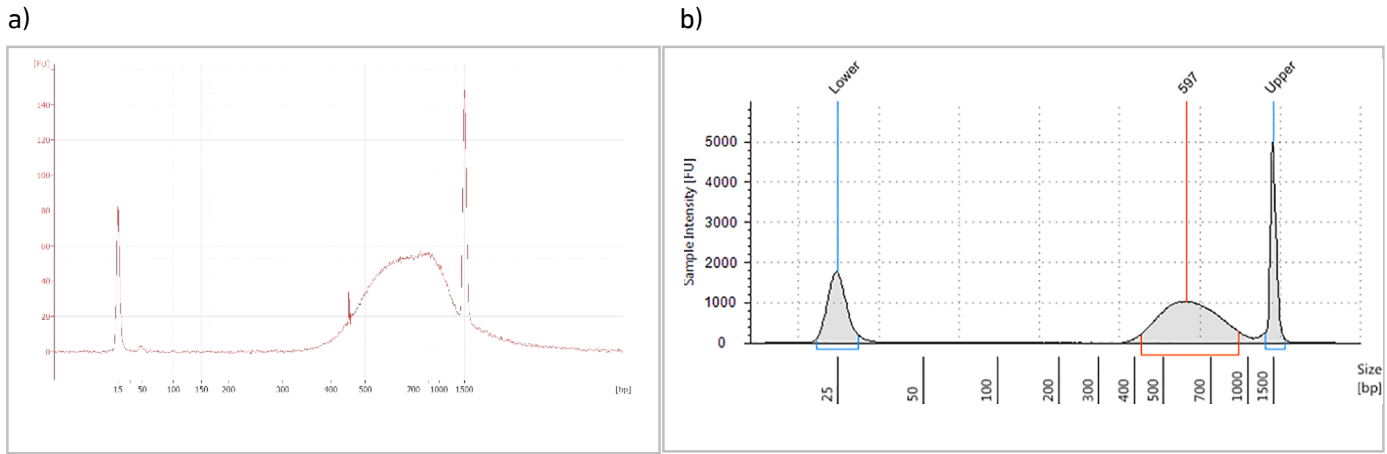


Fig. 1. Bioanalyzer (a) and TapeStation (b) traces for 1 µl of genomic library sample from the Chromium™ Genome Reagent Kits v2 User Guide.

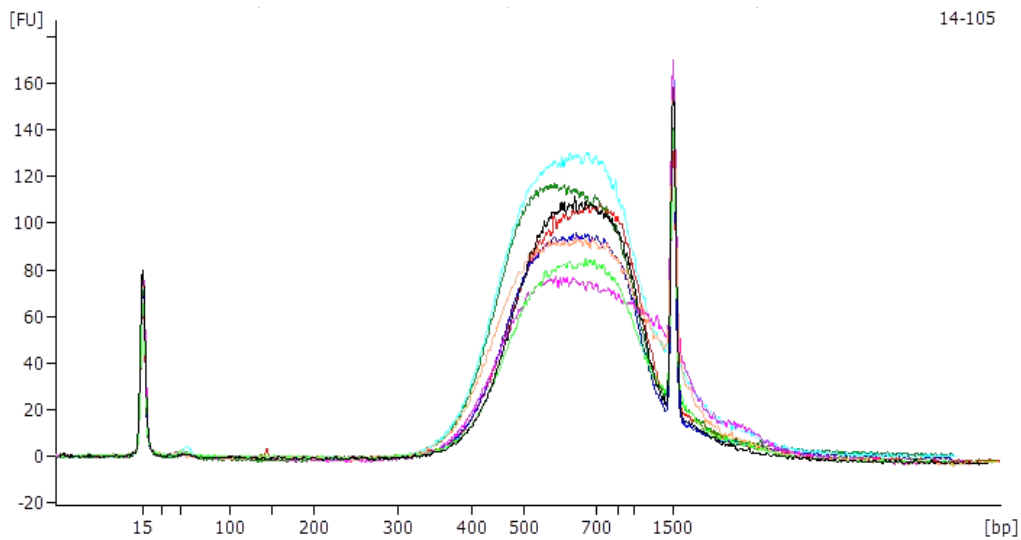


Fig. 2. Bioanalyzer traces for different Chromium™ Genome v2 libraries that have yielded successful sequencing results are presented in composite.

CONCLUSION

This discussion looks at insert size as one metric to predict success in library sequencing. The Bioanalyzer and TapeStation traces are to be used as a QC guide for fragment/ insert size. While peak shapes may vary it is most important that the peak of the curve is in the range of 400 bp – 1000 bp and that there be evidence of inserts in the range of 400 bp to 600 bp in length. Other parameters that must be monitored carefully include accurate library quantitation by qPCR and correct amount of library loaded onto the sequencer. Libraries prepared and sequenced according to guidelines discussed here and outlined in the Genome Reagent Kits v2 User Guide can deliver high quality sequencing data for genomic libraries.

REFERENCES

- Chromium™ Genome Reagent Kits v2 User Guide (CG00048)

Notices

Document Number

CG000066 Rev A *Technical Note*

Legal Notices

© 2016 10x Genomics, Inc. All rights reserved. Duplication and/or reproduction of all or any portion of this document without the express written consent of 10x Genomics, Inc., is strictly forbidden. Nothing contained herein shall constitute any warranty, express or implied, as to the performance of any products described herein. Any and all warranties applicable to any products are set forth in the applicable terms and conditions of sale accompanying the purchase of such product. 10x Genomics provides no warranty and hereby disclaims any and all warranties as to the use of any third party products or protocols described herein. The use of products described herein is subject to certain restrictions as set forth in the applicable terms and conditions of sale accompanying the purchase of such product. "10x", "10x Genomics", "Changing the Definition of Sequencing", "Chromium", "GemCode", "Loupe", "Long Ranger", "Cell Ranger" and "Supernova" are trademarks of 10x Genomics, Inc. All other trademarks are the property of their respective owners. All products and services described herein are intended FOR RESEARCH USE ONLY and NOT FOR USE IN DIAGNOSTIC PROCEDURES.

The use of 10x Product(s) in practicing the methods set forth herein has not been validated by 10x, and such non-validated use is NOT COVERED BY 10X STANDARD WARRANTY, AND 10X HEREBY DISCLAIMS ANY AND ALL WARRANTIES FOR SUCH USE.

Nothing in this document should be construed as altering, waiving or amending in any manner 10x Genomics, Inc., terms and conditions of sale for the Chromium™ Controller, consumables or software, including without limitation such terms and conditions relating to certain use restrictions, limited license, warranty and limitation of liability, and nothing in this document shall be deemed to be Documentation, as that term is set forth in such terms and conditions of sale. Nothing in this document shall be construed as any representation by 10x Genomics, Inc that it currently or will at any time in the future offer or in any way support any application set forth herein.

Customer Information and Feedback

For technical information or advice, please contact our Customer Technical Support Division online at any time.

Email: support@10xgenomics.com

10x Genomics 7068 Koll Center Parkway

Suite 401

Pleasanton, CA 94566 USA