



TS007/RAM 1 star

TS007/RAM 3 star

UM_TS007-RAM_202007_en
2030011410

EN

dormakaba 

User information TS007 1 star

The TS007 1 star cylinder offers resistance to many types of attack.



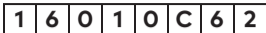
It is designed to be used in conjunction with TS007 2 star security door hardware to ensure enhanced resistance to all commonly used attack methods. Therefore this product **MUST** be used in conjunction with TS007 2 star security door hardware to ensure security.

Such hardware can be recognised by the 2 star marking which may either be visible from the outside on an installed handle or, failing this, will be visible once the outside handle has been removed.

Security hardware can be of several types, including a handle with a reinforced backplate, an escutcheon or a device which is concealed behind the handle backplate. In all cases, the purpose is to protect your cylinder from force attack.

This pextra Guard/RAM Guard cylinder has been tested to British Standards BS EN 1303:2005 and TS 007:2014*A1:2015 1 star Kitemark Approved.

BS EN 1303:2005 Classification



This means this cylinder has been through rigorous testing. It is designed as a replacement cylinder to upgrade your security against different forms of attack which a burglar would use.

Your security can be further enhanced by fitting TS007 2 star door furniture. Please speak to your Locksmith/Security Specialist for more advice.

Kitemark applies only to the pextra Guard/RAM Guard Euro Double, Thumbturn and Half Cylinders.

User information TS007 3 star

The Guard 3 star cylinder offers resistance to many types of attack.



No specific security hardware is required, but installing this 3 star cylinder in conjunction with TS007 2 star furniture will increase attack resistance still further.

Security hardware can be of several types, including a handle with a reinforced backplate, an escutcheon or a device which is concealed behind the handle backplate. In all cases, the purpose is to protect your cylinder from force attack.

This extra Guard/RAM Guard cylinder has been tested to British Standards BS EN 1303:2005 and TS 007:2014+ A1:2015 3 Star Kitemark Approved.

BS EN 1303:2005 Classification

1	6	0	1	0	C	6	2
---	---	---	---	---	---	---	---

This means this cylinder has been through rigorous testing. It is designed as a replacement cylinder to upgrade your security against different forms of attack which a burglar would use.

Your security can be further enhanced by fitting TS007 2 star door furniture. Please speak to your Locksmith/Security Specialist for more advice.



NOTICE

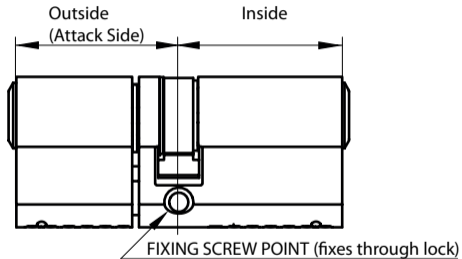
In the event of a Thumbturn Cylinder being attacked, the inside thumbturn will lock in position. To disengage it please pull the thumbturn away from the door and then turn.

Kitemark applies only to the pextra Guard/RAM Guard Euro Double, Thumbturn and Half Cylinders.

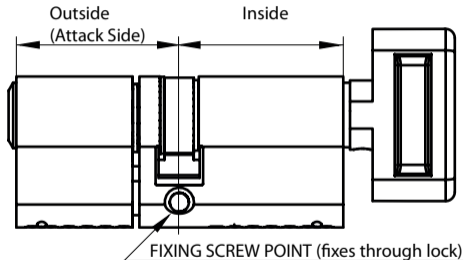
Prior to Fitting

Please check cylinder for operation prior to fitting!

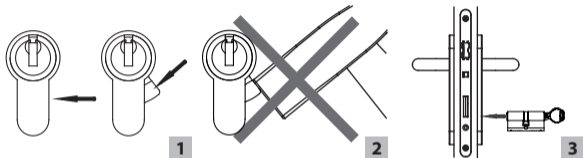
Double Cylinder (Key/Key)



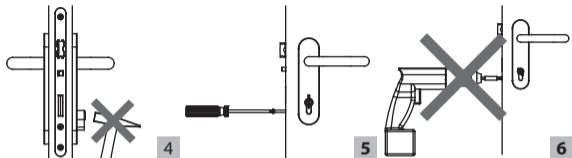
Thumbturn Cylinder (Key/Knob)



Installation



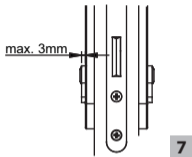
- 1: Put cam into 0-position using key
- 2: Do not adjust cam using force
- 3: Push locking cylinder into the lock



4: Do not use force when installing locking cylinder into the lock

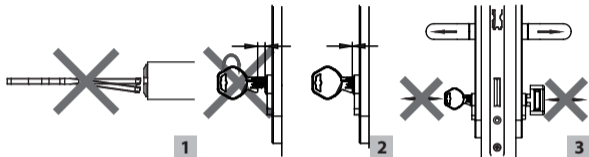
5: Secure locking cylinder with cylinder fixing screw using a manual screwdriver (max. tightening torque 5Nm)

6: Do not use an impact driver or automatic screwdriver or cordless drill to secure locking cylinder



7: Maximum 3 mm projection on the outside (attack side) from door furniture, ideally sit flush with door furniture

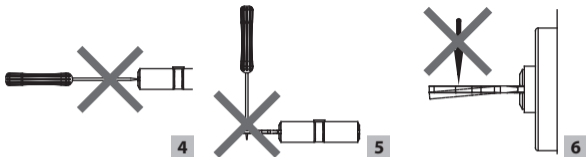
Operation



1: Do not use bent and damaged keys

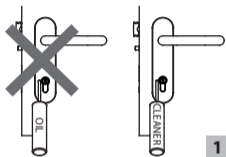
2: Key must always be completely inserted when turning

3: Do not use the key bow or thumbturn as a means of pulling the door open/closed



- 4:** Operate locking cylinder only with corresponding key, do not insert any other tools in the key way
- 5:** Do not put any accessories (screw driver, pliers, nail, etc.) on the key bow
- 6:** No forces may impinge on the side of the key when inserting it and pulling it out

Care and maintenance



1: Clean and lubricate locking cylinder every six month with dormakaba cleaner, never use oil or graphite

Product safety



www.dormakaba.com/cleaner

Additional informations

Please note that certified locking cylinders or fittings can only provide the highest level of protection if the entire door has been adapted to accommodate the enhanced security features. Should you have any questions regarding the security of your door, contact trained specialists, e.g. at police advice centres or specialist stores.

Please be aware that it should not be possible to manipulate the turning knob from the outside when thumbturn cylinders are installed even if the door is shut. There may be an unwanted opening, e.g. over a window next to the door, or

glass in the door leaf. In such cases, the thumbturn cylinder must be replaced with a double cylinder, or the area of glass must be made burglar resistant.

Do not bring locking cylinders into contact with lacquer or paint.

For defects, check:

- if the locking cylinder is damaged
- if there are any foreign objects in the key way
- if the key is faulty

If the keys can be inserted cleanly, turned and taken out after the locking cylinder has been removed, the fault is somewhere else

Other possible causes of the error are:

- poor position of the cylinder in the lock case
- a faulty lock or inaccurately fitted locking plate
- distorted doors etc

dormakaba Austria GmbH
Ulrich-Bremi-Straße 2
3130 Herzogenburg
Austria
T: +43 2782 808 0

www.dormakaba.com