



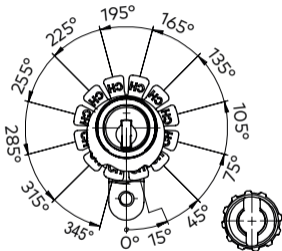
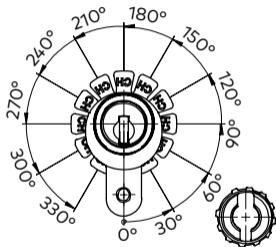
M1514/M1414

UM_1514/1414_202008_multi
1220025096

DE/EN/FR/IT

dormakaba 

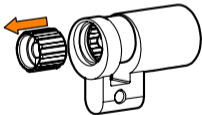
Mögliche Mitnehmerpositionen



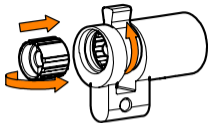
Umbauanleitung



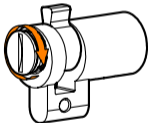
1. Deckel auf Zylinderrückseite abschrauben.



2. Mitnehmernabe mit Hilfe einer Pinzette herausziehen.

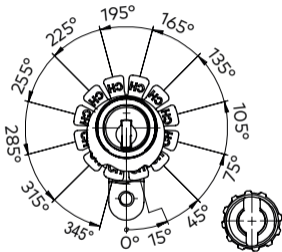
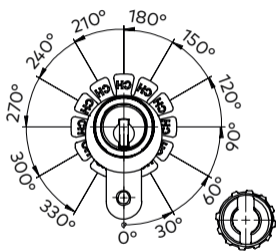


3. Mitnehmer in die gewünschte Position bringen, und Mitnehmernabe wieder einsetzen. Für 45° Schritte muss die Nabe gedreht werden (siehe Seite 2)!



4. Deckel auf der Zylinderrückseite fest einschrauben (mind. 0,6 Nm).

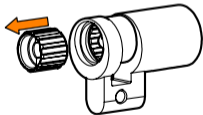
Possible cam positions



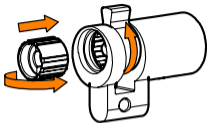
Conversion instructions



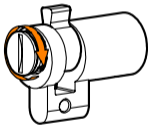
1. Unscrew the cover on the reverse side of cylinder.



2. Remove hub.

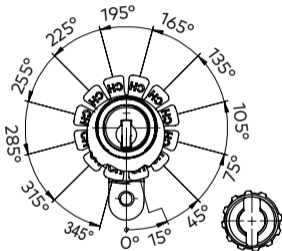
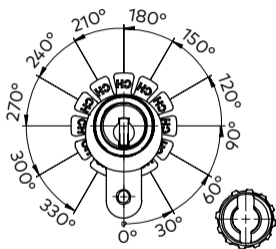


3. Bring cam in the desired position and insert hub. For 45° steps, the hub must be rotate (See page 5).



4. Screw in firmly the cover (at least 0,6 Nm) on the reverse side of cylinder.

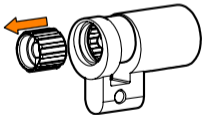
Possibilités de l'entraîneur positions



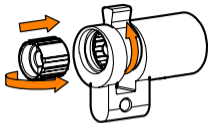
Instructions de conversion



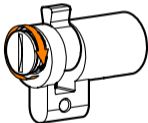
1. Dévissez le couvercle à l'arrière du cylindre.



2. Sortez le moyeu.

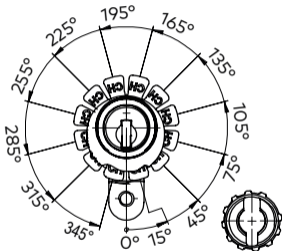
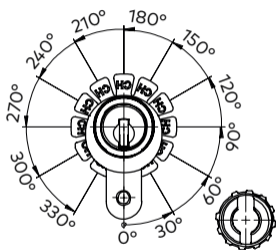


3. Déplacez l'entraîneur sur la position souhaitée et insérez le moyeu. Le moyeu doit être tourné pour les étapes par pas de 45° (voir page 8).



4. Revissez le couvercle fermement à l'arrière (au moins $0,6 \text{ Nm}$) du cylindre.

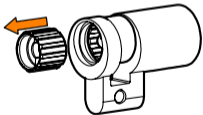
Possibili posizioni di trascinatore



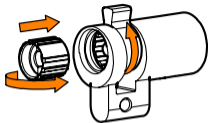
Istruzioni per la conversione



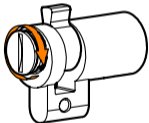
1. Svitare il coperchio sulla parte posteriore del cilindro.



2. Estrarre il mozzo.



3. Collocare il trascinatori nella posizione desiderata e inserire il mozzo. Per rotazioni di 45° è necessario ruotare il mozzo (vedi pagina 11)!



4. Avvitare il coperchio sulla saldamente parte posteriore (almeno $0,6 \text{ Nm}$) del cilindro.

dormakaba Schweiz AG
Mühlebühlstrasse 23
8620 Wetzikon
Schweiz
T: +41 44 931 61 11

www.dormakaba.com