



OC ACADEMY

OF COLOR SCIENCE

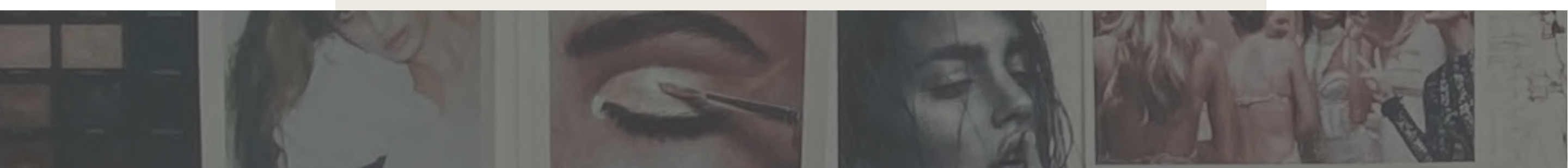
WEEK 2 TRAINING GUIDE

REGULAR FOUNDATION ZOOM IN



what do you notice about this foundation that doesn't look natural? zoom in. look at the layered texture that's created. look at my undereyes and how they look puffy. look at my problem areas and notice how they still aren't covered completely.

ACADEMY
OF COLOR SCIENCE



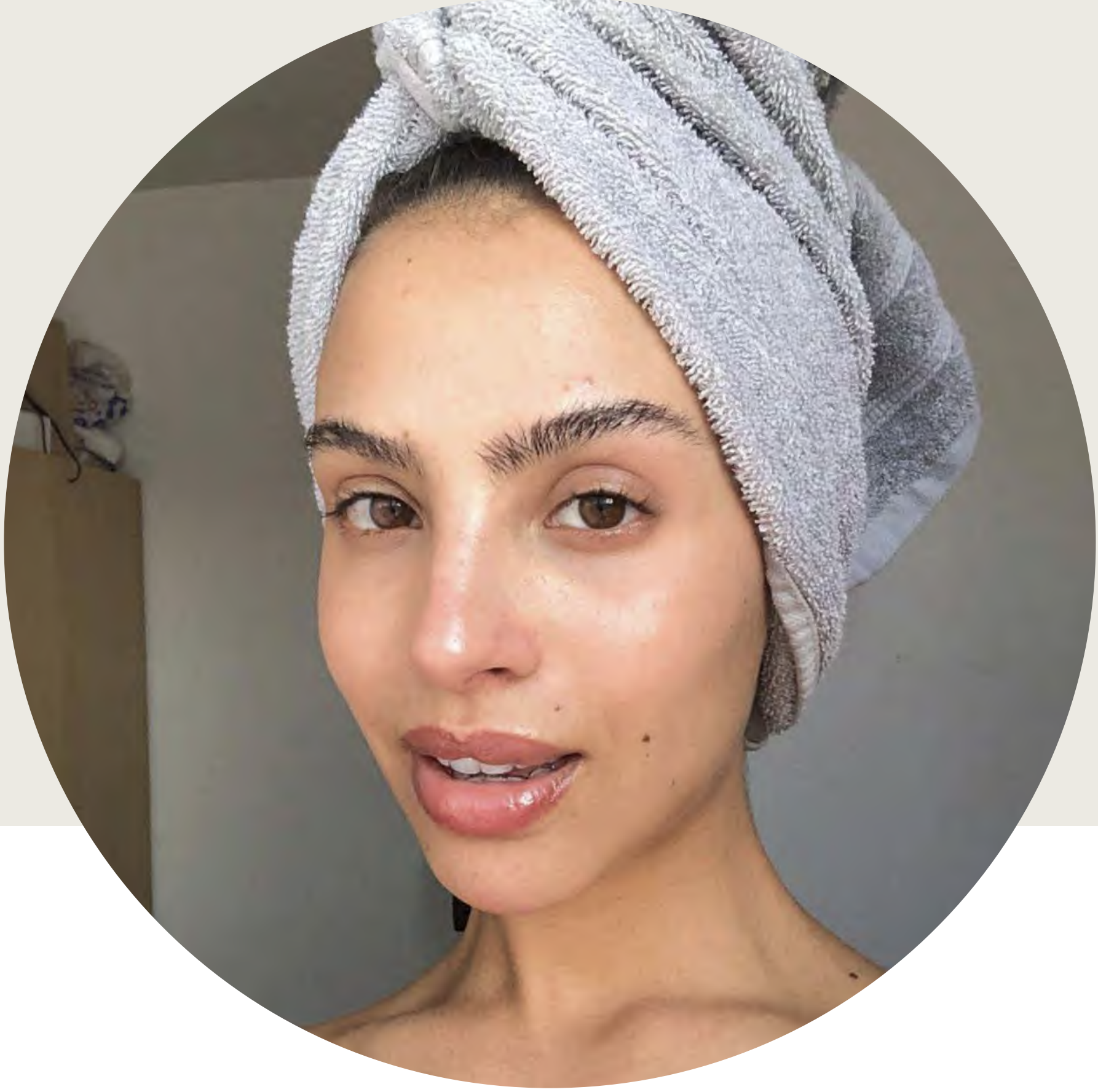
REGULAR FOUNDATION VS DEMI



look at both images. what are the main differences you see?
notice them and write them down. it's important to recognize
why Demi stands out next to regular foundation.

ACADEMY
OF COLOR SCIENCE





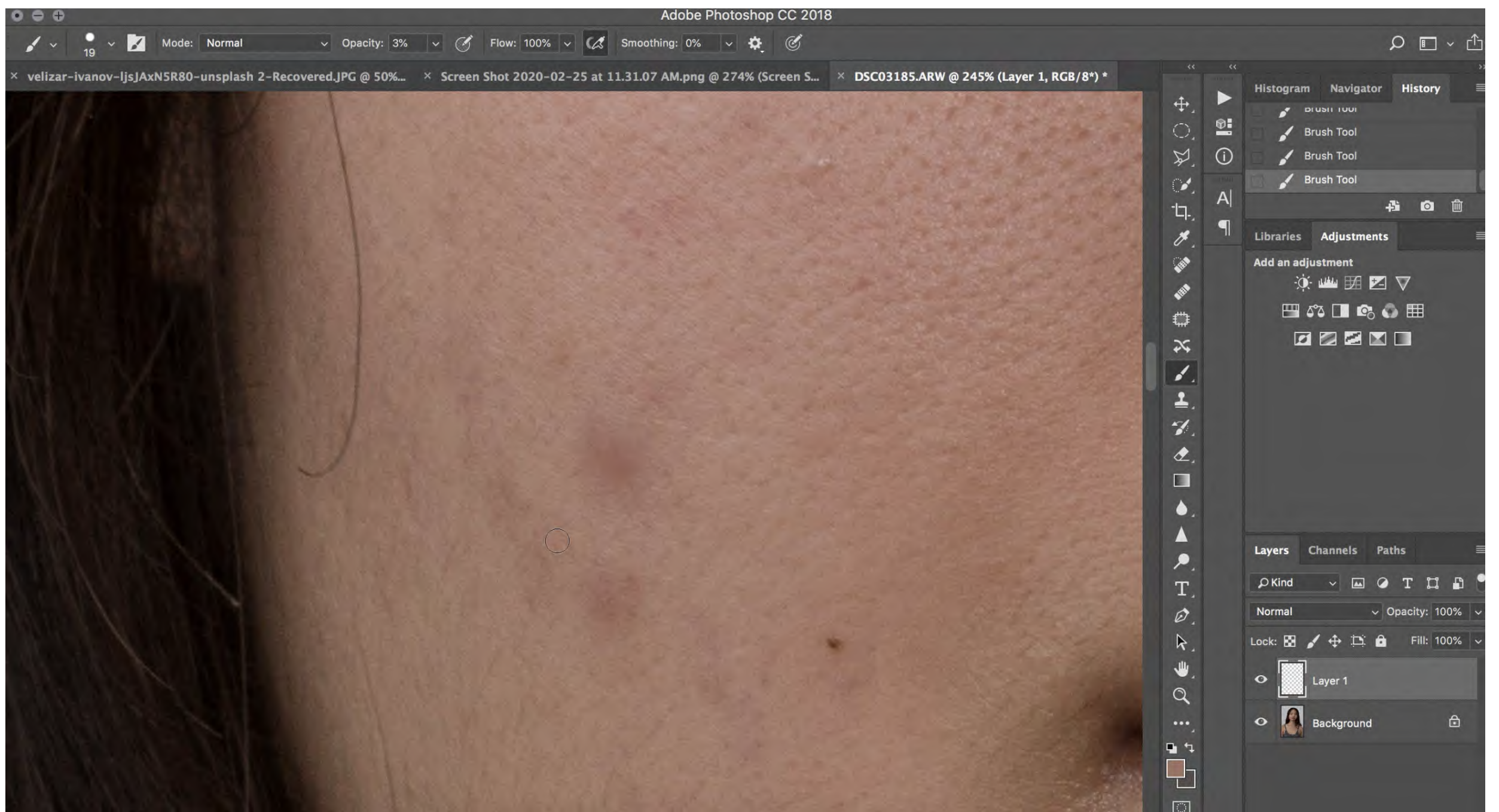
prior to makeup



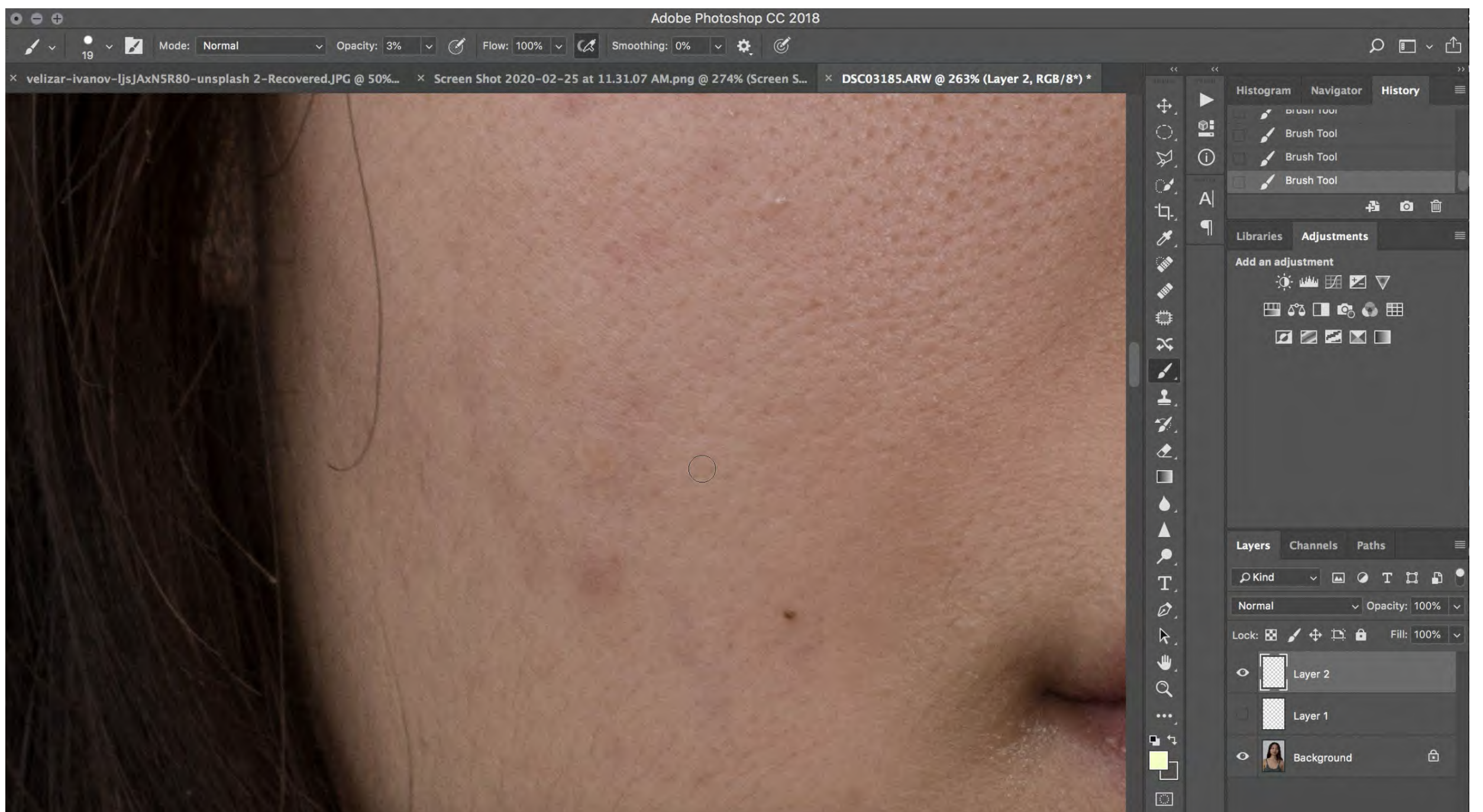
before and after re-touching with regular foundation

ACADEMY
OF COLOR SCIENCE





using a skin-tone color to try and cover up the blemish. it blurs the skin and doesn't completely cover the blemish. it took about 18 clicks at 3% opacity to get to this result.



using a yellow-green color to cover up the blemish. it doesn't blur the skin, but instead keeps the natural texture. it only took 6 clicks at 3% opacity to cover it up.

ACADEMY
OF COLOR SCIENCE



FROM BLUE TO PURPLE DARK CIRCLE UNDERTONES

CORRECTS DARK CIRCLES

FOR RED SKIN

CORRECTS REDNESS ON ALL SKINTONES

FOR RED SKIN

CORRECTS SALLOWNESS ON ALL SKINTONES

LANCÔME
TEINT IDOLE ULTRA WEAR
CAMOUFLAGE
CORRECTEUR HAUTE COUVRANCE LONGUE TENUE ULTRA WEAR HIGH COVERAGE CORRECTOR

CORRECTS UNDER-EYE BAGS ON TAN SKIN

CORRECTS REDNESS

CORRECTS YELLOW UNDERTONES

CORRECTS UNDER-EYE BAGS ON FAIR SKIN

COLOR CORRECTING CONCEALER
CACHE-CERNES CORRECTEUR

NORMAL CONCEALING/CONTOURING SHADES

makeup companies approach to color correcting. basic sets of colors that don't work for every skin-tone, every type of redness and every type of blemish.

ACADEMY
OF COLOR SCIENCE





STEP 1: START WITH A BASE

STEP 2: ADD CORRECTORS

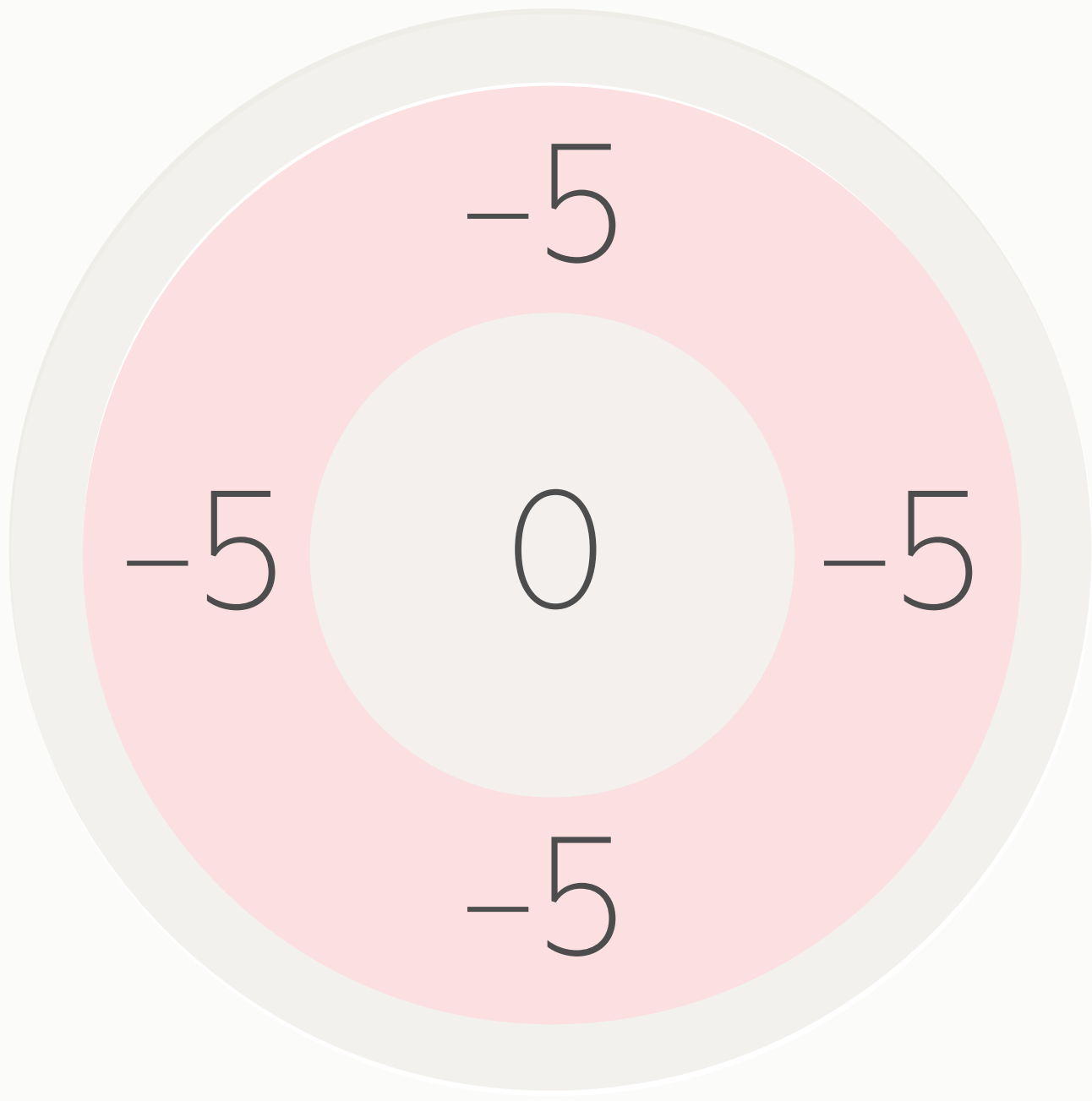
STEP 3: FINISH WITH FOUNDATION OR CONCEALER & SET WITH POWDER



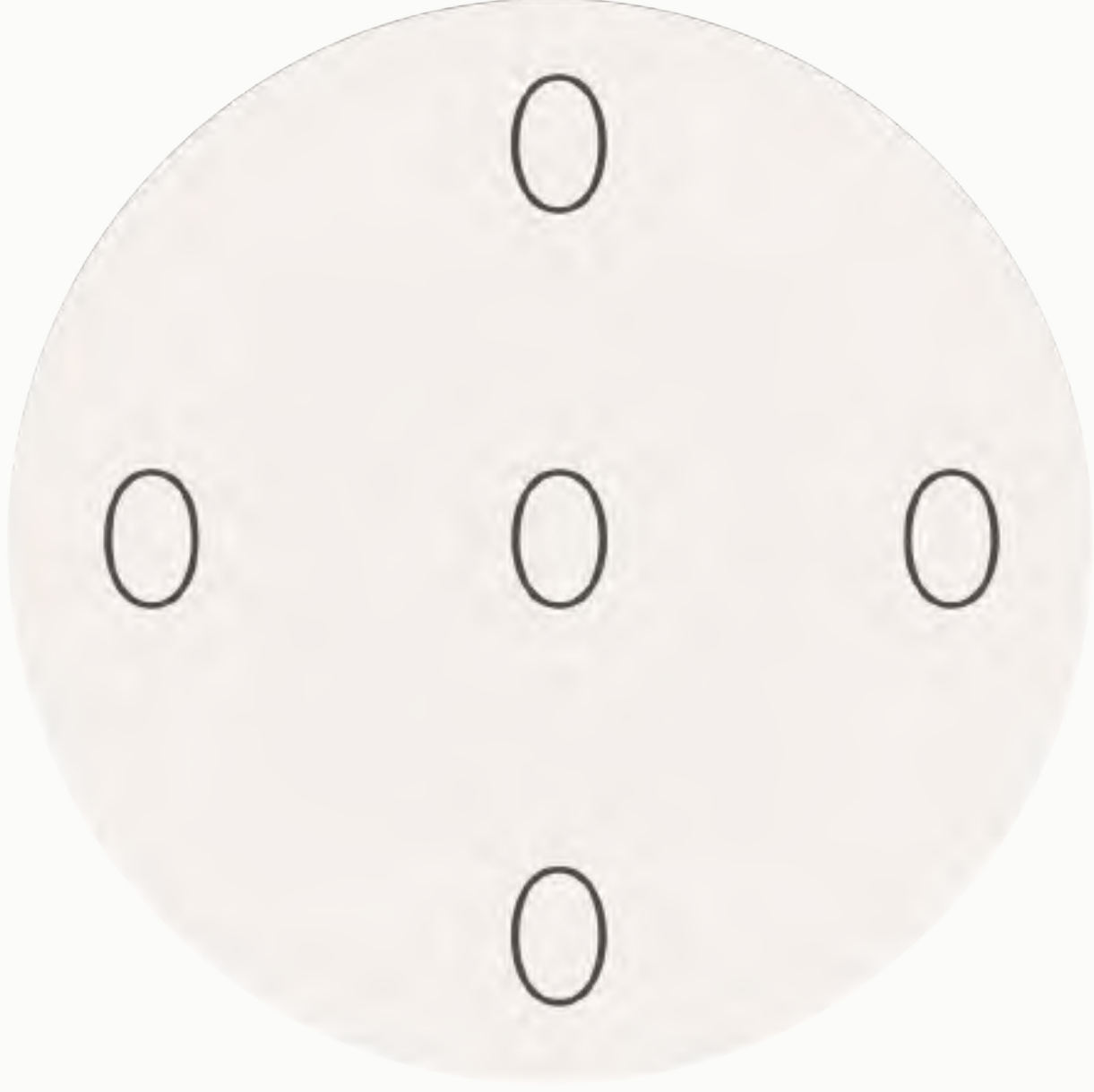
this is the wrong application process for color correcting. when using this approach you're covering colors that don't need to be covered. see the next page for a detailed graphic to help visualize what's wrong with this application.

ACADEMY
OF COLOR SCIENCE

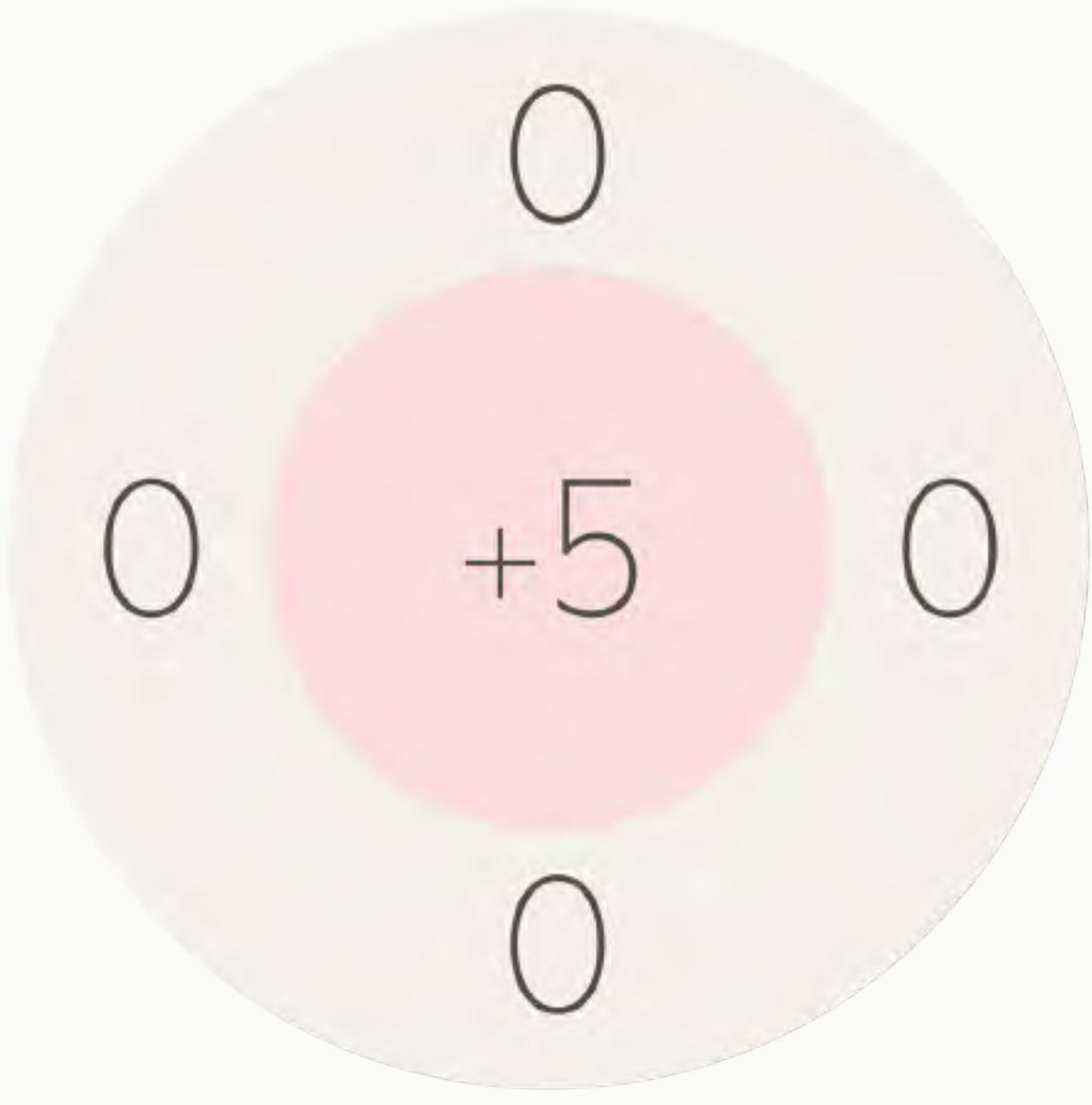




a visualization of a blemish that was color-solved incorrectly. when you put color around the problem area, it creates more of a problem.



what a blemish looks like when color solving with -5 green



what a blemish looks like before color solving

ACADEMY
OF COLOR SCIENCE