



## Aqua Blu

GUESTS

28

CABINS

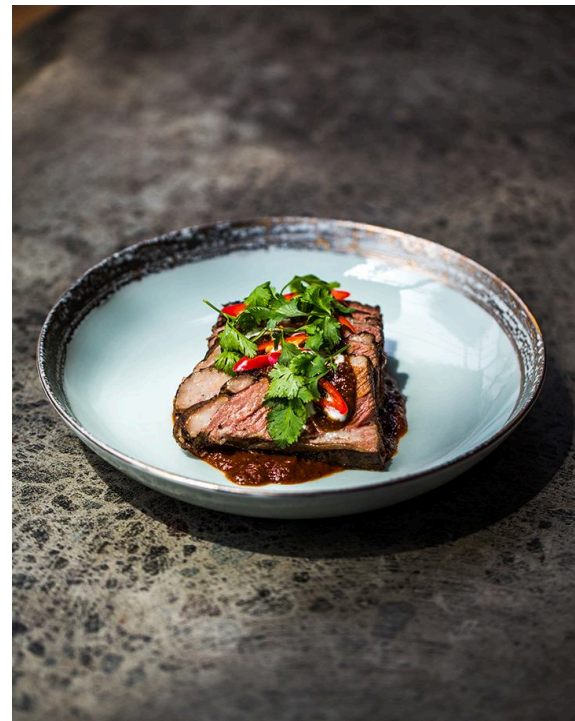
14

### **A one-of-a-kind explorer yacht fully equipped for undersea and on-shore adventures**

Just under 200 feet long and featuring 14 individually designed suites, the *Aqua Blu* offers an intimate environment that reflects its history as a former British naval explorer and a private yacht for a European aristocratic family. A 2019 refurbishment by renowned Dutch yacht designer Cor D. Rover brought this refined vessel up to world-class cruising specifications, blending modern luxury with ultimate comfort and safety.

Exceptional amenities, including an outdoor workout area and hot tub, a stylish lounge bar and a tranquil spa featuring Balinese massage and aromatherapy, elevate and enhance your time exploring this wild and stunningly beautiful region.

Enjoy an innovative menu curated by renowned chef Benjamin Cross, which draws inspiration from Indonesia's fabled spice trade route as well as European and Mediterranean cuisines.



# Cabin Categories

## Category 1

LOWER DECK #102-103

These cozy 146-square-foot cabins feature two twin beds. They each have two porthole windows and a compact bathroom. Amenities include a hair dryer, safe, beach bag, bathrobe and slippers.



## Category 2

MAIN DECK #201, 203

FORECASTLE DECK #301

BRIDGE DECK #401

At an average of 259 square feet, these bright cabins feature a king-size bed and ample storage space—plenty of room for two. Select cabins have a sofa in addition to an armchair. Bathroom sizes vary across category 2 cabins; all optimize space for maximum comfort. Amenities include a hair dryer, safe, beach bag, tea/coffee facilities, bathrobe and slippers. Details about individual cabins can be found in the deck plan.



## Category 3

LOWER DECK #101, 104, 105

MAIN DECK #202, 204

FORECASTLE DECK #302, 303

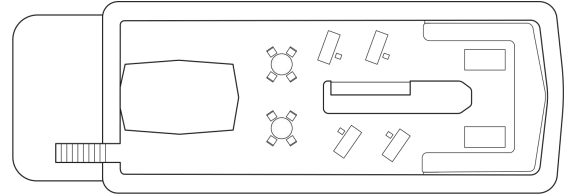
BRIDGE DECK #402

These light-filled cabins range from 269 to 363 square feet, averaging 317 square feet. They feature a king-size bed or two twin beds which can be configured as a king-size bed upon request. Most feature a sofa, armchair, coffee table, desk and ample storage and cupboard space. Depending on their deck location, these cabins have either portholes or large windows. The more spacious category 3 cabins offer a separate seating area and walk-in closet. Bathroom sizes vary, although the majority are large, and one has a soaking tub in addition to a shower. Amenities include a hair dryer, safe, beach bag, tea/coffee facilities, bathrobe and slippers. Details about individual cabins can be found in the deck plan.



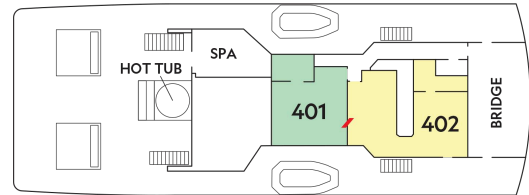
# Deck Plans

## Sun Deck



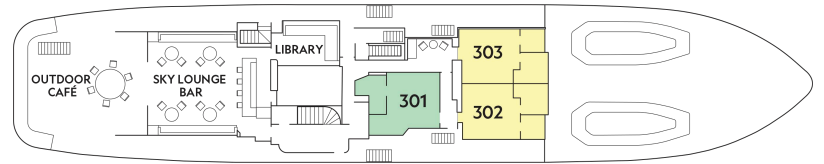
## Bridge Deck

- Category 2
- Category 3



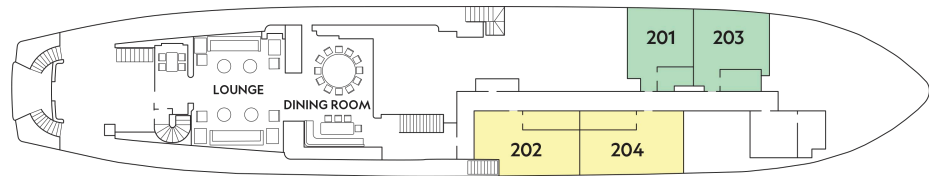
## Forecastle Deck

- Category 2
- Category 3



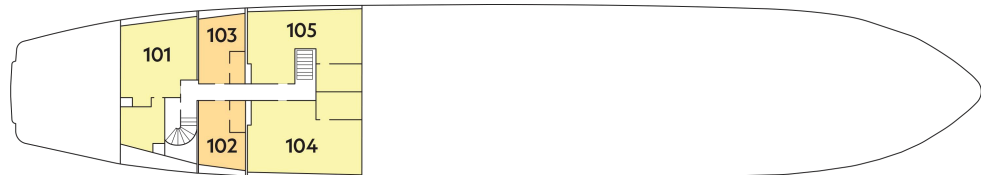
## Main Deck

- Category 2
- Category 3



## Lower Deck

- Category 1
- Category 3



# Ship Amenities

## Inviting Public Spaces

Spread across five decks, an array of inviting public spaces beckon guests to relax at sea and convene with their fellow travelers. Indoors, a Library and TV Room, and two lounges are all well-appointed in the ship's soothing brass and ivory decor scheme. Outdoors, guests can enjoy al-fresco dining, an exercise area with ocean views and an expansive sundeck with plush sunbeds ideal for sunset cocktails. Each private cabin lends a luxurious sense of home, offering the perfect respite after days filled with active adventures.



## Tools for Exploration

Diving is offered on voyages aboard *Aqua Blu* at no extra cost. This option is limited to 10 experienced certified divers on a first-come-first-served basis. Non-divers can enjoy a range of other water activities, including snorkeling, swimming and kayaking. Call an Expedition Specialist for details.