



## National Geographic Islander II

GUESTS

48

CABINS

26

### A New Ship with Just 26 Spacious Staterooms and Suites Sailing the Galápagos Islands

Sleek and elegant, *National Geographic Islander II* sails year-round in the Galápagos Islands and elevates the guest experience to an entirely new level.

*National Geographic Islander II* is a gracious expedition vessel that feels like a private yacht. With only 26 staterooms and suites, and accommodating just 48 guests, she sails with a 1:1 guest-to-crew ratio.

Special features include teak decks, indoor-outdoor dining options, an impressive observation deck, and new amenities like a climate-controlled Marina and a dedicated Science Hub.

*National Geographic Islander II* provides an authentic sense of place, drawing on our decades of partnering with local communities and conservation groups. Contributing to the fully immersive Ecuadorian experience on board are Ecuadorian staff and locally sourced and sustainable farm-to-table and ocean-to-table culinary ingredients, as well as artisan spa elements and handcrafted textiles, art, and décor all regionally created.

The *National Geographic Islander II* celebrates Lindblad's deep connection to the islands, Ecuador, and its people with a deeply immersive and truly unique Ecuadorian cultural experience. The carefully considered food and beverage program highlights the four regions of Ecuador with locally sourced farm-to-table ingredients. Regional ingredients can even be found in spa products. From Ecuadorian shipboard staff to artwork, textiles, and décor created by local artists and artisans and Ecuadorean music heard throughout the ship, guests will experience the beauty and wonder of Ecuador both on and off the ship.



# Cabin Categories

## Bridge Deck

### Category SU

GUEST SUITE #301, 302, 306, 308, 310, 311, 312, 316

280 sq. ft. with two panoramic windows, twin/king convertible beds, seating area with sofa, lounge chair, and marble double-sink bathrooms with rain shower. #301, 302, 306, 308, 310-312, 316. #312 & #316 are triple occupancy with sofa made up as third bed. Third person rates are one-half the double occupancy rate. Connecting Suites: #301/303, 302/306



### Category SO

SOLO SUITE #315, 318

280 sq. ft. with two panoramic windows, twin/king convertible beds, seating area with sofa, lounge chair, and marble double-sink bathrooms with rain shower; dedicated solo but otherwise identical to SU category.



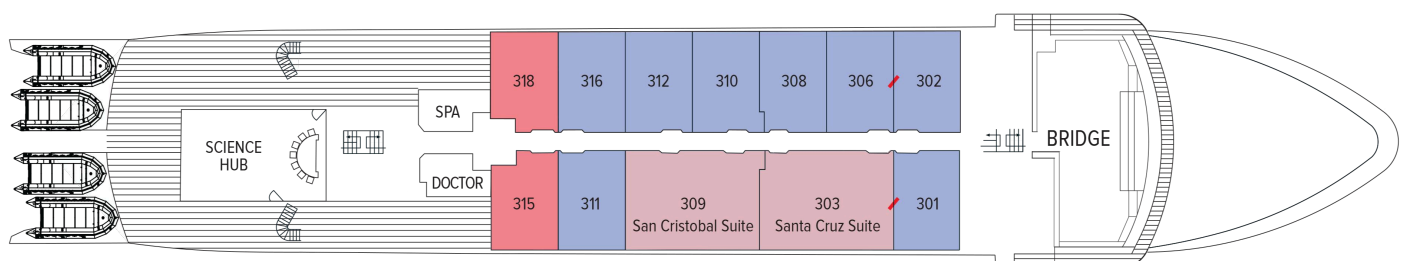
### Category IS

ISLANDER SUITE #303, 309

515 sq. ft. with two panoramic windows, twin/king convertible beds, separate living areas with sofa, table and chairs, two lounge chairs, larger bathroom with both rain shower and tub. Triple occupancy with sofa made up as third bed. Third person rates are one-half the double occupancy rate. Connecting Suites: #301/303, 302/306



## Bridge Deck



# Cabin Categories

## Main Deck

### Category IS

ISLANDER SUITE #209, 218

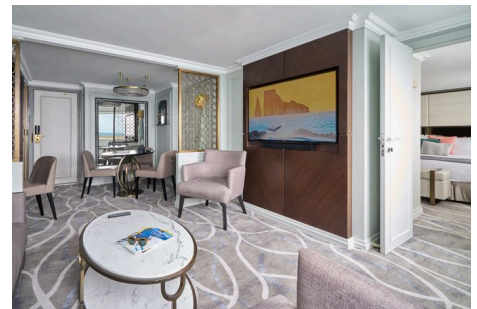
515 sq. ft. with two panoramic windows, twin/king convertible beds, separate living areas with sofa, table and chairs, two lounge chairs, larger bathroom with both rain shower and tub. Triple occupancy with sofa made up as third bed. Third person rates are one-half the double occupancy rate.



### Category SU

GUEST SUITE #203, 205-208, 210-212, 215, 220

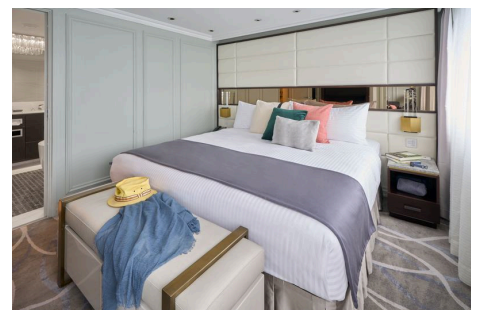
280 sq. ft. with two panoramic windows, twin/king convertible beds, seating area with sofa, lounge chair, and marble double-sink bathrooms with rain shower. Connecting Suites: #205/207.



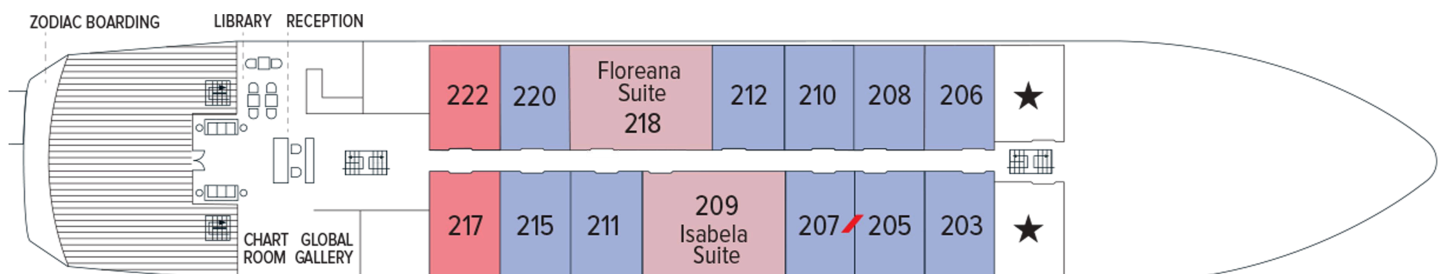
### Category SO

SOLO SUITE #217, 222

280 sq. ft. with two panoramic windows, twin/king convertible beds, seating area with sofa, lounge chair, and marble double-sink bathrooms with rain shower; dedicated solo but otherwise identical to SU category.

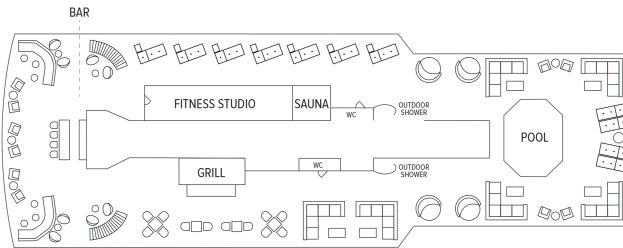


## Main Deck

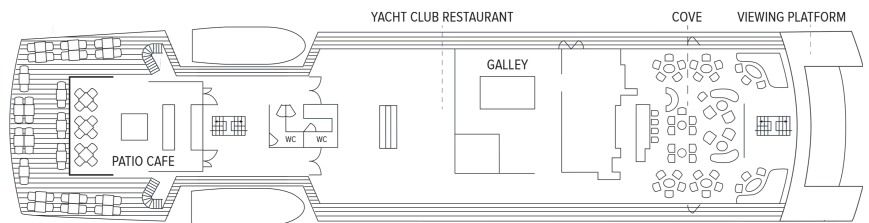


# Deck Plans

## Observation Deck

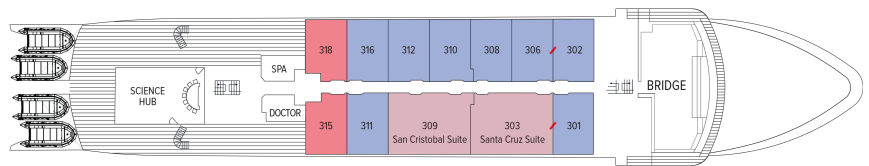


## Promenade Deck



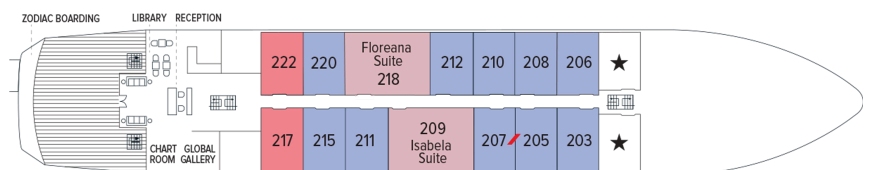
## Bridge Deck

- Category SU
- Category SO
- Category IS

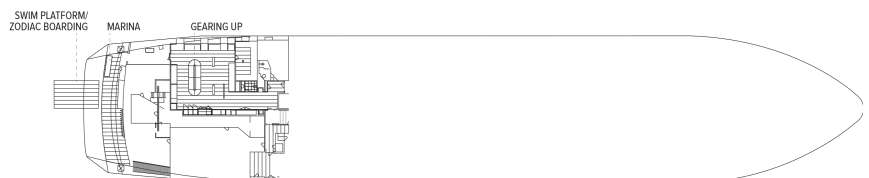


## Main Deck

- Category IS
- Category SU
- Category SO



## Marina Deck



# Ship Amenities

## Indoor-Outdoor Dining

Enjoy meals in the expanded al fresco Patio Café, sophisticated Yacht Club Restaurant on the Promenade Deck or Grill on the Observation Deck, where there's also a bar and ample seating to host events. Here, guests gather for wine tastings, chocolate tastings and Bubble-Qs—BBQs made extra celebratory with Champagne. The convenient 24-hour beverage and snack stations in the Bar and Library are other welcome amenities.



## Science Hub

Outfitted with scientific equipment, the exciting new Science Hub continues the Lindblad Expeditions-National Geographic legacy of supporting conservation and research. Equipped for underway oceanography, interactive video presentations and an enhanced photo experience, the Science Hub is also a place for young guests in the National Geographic Explorers-in-Training program to experience hands-on learning.

## Public Spaces

The ship's public spaces enhance the connection to the islands. Guests will find an open Bridge, surrounding teak decks, and a forward-viewing area. Two dining areas accommodate all guests in a single seating. The Cove, which has a bar, is the setting for daily Recaps. Other ship features include a Reception area with glass doors that lead to an open teak Viewing Deck, a Plunge Pool, a Chart Room, the Global Gallery, Library, Marina, Swim Platform and Zodiac boarding area.



## Expedition Tools

*National Geographic Islander II* carries a fleet of kayaks and stand-up paddleboards, a glass-bottom boat, an expanded flotilla of versatile Zodiacs, complete snorkel gear for adults and children, video microscope, and Science Hub.

The newly refitted teak-appointed marina is spacious and climate-controlled, designed for guests to comfortably get in and out of expedition gear.

## Expanded Expedition Staff

The Expedition Team, led by a veteran Expedition Leader, includes a five Naturalists, Undersea Specialist, Certified Photo Instructor and Certified Field Educators who run our exclusive National Geographic Explorers-in-Training for kids and teens.