



National Geographic Endeavour II

GUESTS

96

CABINS

52

Our latest and most family-friendly ship, the *National Geographic Endeavour II* is exceptionally nimble and maneuverable.

Born in the cold waters of Patagonia, *National Geographic Endeavour II* was built for heavy seas. Now, permanently stationed in Galápagos, she comfortably sails the Equator.

A floor-to-ceiling rebuild when she repositioned to the tropics meant she could be crafted to perfectly accommodate the Lindblad style of travel. Where she previously carried 136 passengers, she now accommodates just 96 guests in 52 thoughtfully appointed cabins. She is exceptionally nimble and maneuverable,

with a shallow draft to get up close, great viewing from all public spaces, an expansive open-air observation deck, large windows in cabins and suites, and state-of-the-art tools for exploration including a glass-bottom boat, underwater cameras, video microscope, plus kayaks and stand-up paddleboards.

She replaced the beloved *National Geographic Endeavour*, which donated much of her artwork and her great spirit of camaraderie. Guests have described being aboard *National Geographic Endeavour II* as feeling like a cross between a grand floating hotel and scientific research vessel. She is beyond comfortable, and welcoming to solos, groups, and kids of all ages, and equipped for the up-close and personal explorations that makes Galápagos the trip of a lifetime.

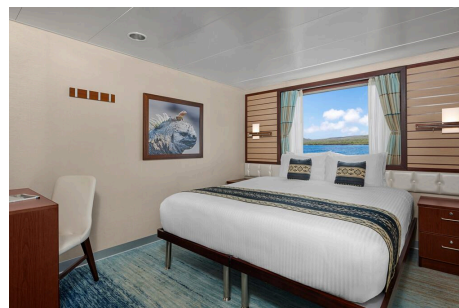


Cabin Categories

Category 1

UPPER DECK, FORWARD #201, 202

All cabins face outside with a large window, two single beds that can convert to a queen-sized bed. Furniture includes an armchair, desk, two nightstands, and a closet.



Category 2

UPPER DECK #211, 213-219, 221-222, 224-229

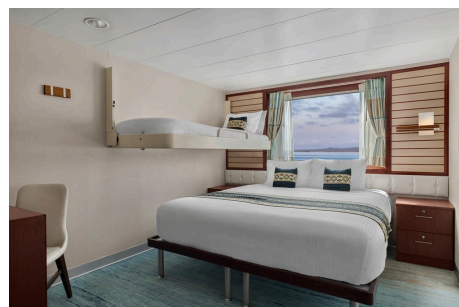
All cabins feature two single beds that can be converted to a queen-sized bed with a large window. Furniture includes an armchair, desk, two nightstands, and a closet. Cabins 224 & 225 can accommodate a third person with a fold-down murphy bed. Cabins 226/228 and 227/229 are interlocking with a connecting door.



Category 3

LOUNGE DECK #311, 313-319, 321, 322, 324, 326, 328, 330

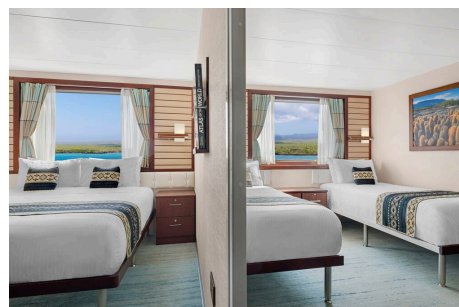
All cabins face outside with a large window, two single beds that can convert to a queen-sized bed. Furniture includes an armchair, desk, 2 nightstands and a closet. Cabins 326 & 328 can accommodate a third person with a fold-down murphy bed. Cabins 315/317, 316/318, and 320/322 are interlocking with a connecting door.



Category 4

BRIDGE DECK #409, 411-414, 416, 418

All cabins are outside with a large window, two single beds that can convert to a queen-sized bed. Furniture includes an armchair, desk, two nightstands, and closet. Cabins 411/413 and 416/418 are interlocking with a connecting door.



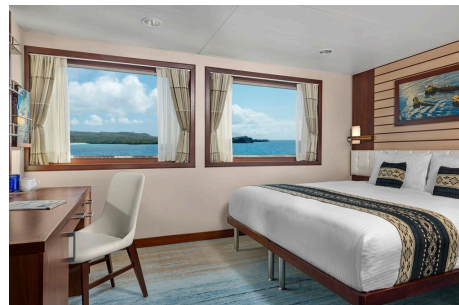
Shared Accommodations:

Connecting cabins are perfect for families or groups of friends. In all, seven cabins can be connected. Triple and solo cabins are available too, to welcome all types of travelers.

Suite A

LOUNGE DECK, MID-SHIP #320

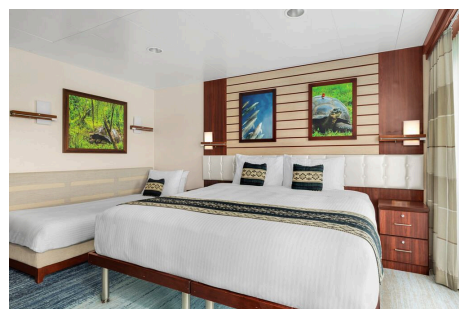
Cabin features two large windows, armchair, large suite-sized bathroom, double closet, writing desk and chair, mini-fridge, two large windows and two nightstands. 2 single beds that can convert to a queen. This suite and cabin 322 are interlocking with a connecting door.



Suite B

BRIDGE DECK, MID-SHIP 420, 422

These suites feature floor-to-ceiling windows that provide incredible views and natural sunlight. Furniture includes a sofa that converts to a single bed, a double closet, writing desk and chair, two nightstands, mini fridge, and large suite-sized bathroom. Cabins have two single beds that can be converted to a queen.



Suite C

BRIDGE DECK, MID-SHIP #415

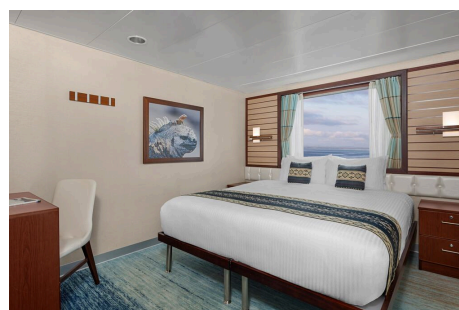
This suite is the largest cabin aboard with a separate well-appointed separate seating area. The seating area includes a sofa that converts to a single bed, writing desk, lounge chair, coffee table, armchair and mini fridge. The cabin features two single beds that convert to a queen, two nightstands, extra closet space, and a large suite bathroom.



Category 2 Solo

UPPER DECK #203-209

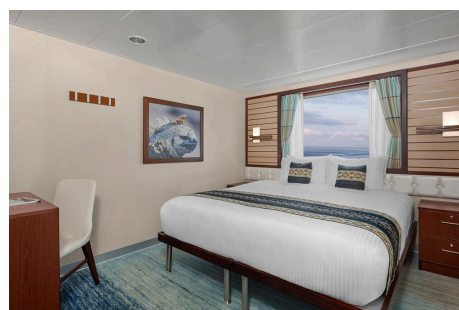
These cabins face outside with a large window with either a wide single bed, or two singles that can convert to a queen. In the cabin you will also find an armchair, desk, two nightstands, and a closet. Equal in size and amenities to other Category 2 cabins.



Category 3 Solo

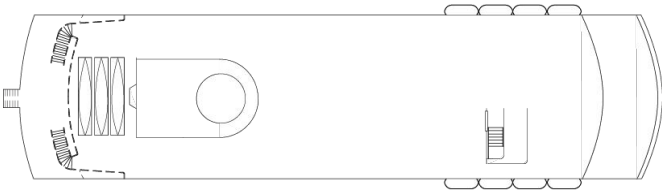
LOUNGE DECK #325, 327

These cabins face outside with a large window and two single beds that convert to a queen. In the cabins you will also find an armchair, desk, two nightstands, and a closet. Equal in size and amenities to other category 3 cabins.



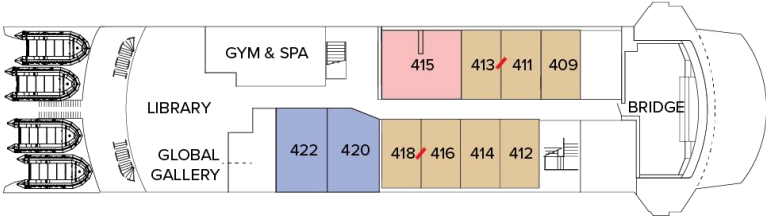
Deck Plans

Observation Deck



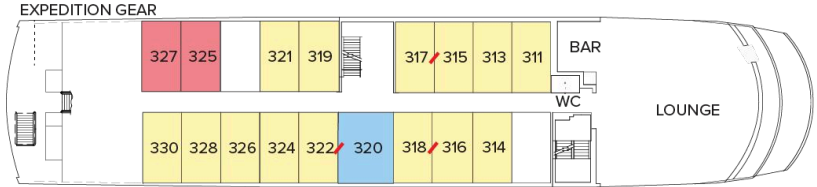
Bridge Deck

- Category 4
- Suite B
- Suite C



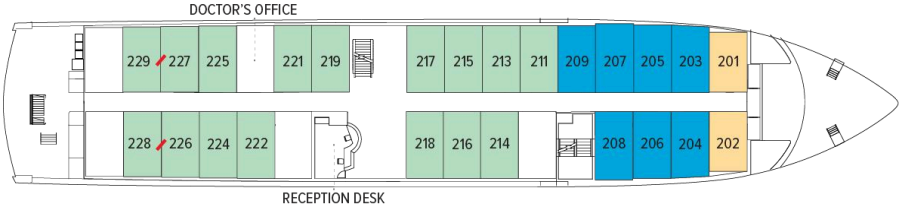
Lounge Deck

- Category 3
- Suite A
- Category 3 Solo

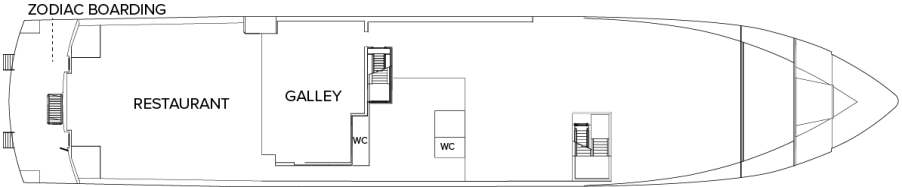


Upper Deck

- Category 1
- Category 2
- Category 2 Solo



Main Deck



Ship Amenities

Public Areas

Forward lounge and bar accommodating all guests for presentations and gatherings, restaurant, large library with Mac kiosks, open-air observation deck, underwater gear area and dual Zodiac boarding platform, and “open bridge,” where guests can meet the Captain and officers and learn about navigation.

Meals

Meals are served in the dining room or sometimes outdoors, in a single, unassigned seating with a sociable, informal atmosphere with Ecuadorian flair.

Cabins

52 outside cabins. All feature ocean views, private facilities, climate controls, and hair dryers, plus Ethernet, Wi-Fi connections and USB ports for mobile devices. Choose from suites on two decks, plus connecting cabins and triples are available for families and friends.

Expedition Equipment

Zodiacs to get to shore quickly, glass-bottom boat, kayaks and paddleboards for personal explorations, snorkel gear and wetsuits for both adults and children, video microscope and underwater video camera.

Special Features

A full-time doctor, undersea specialist, Lindblad-National Geographic certified photo instructor and video chronicler.

Wellness

A fitness center, LEXspa treatment room, exercise room and wellness specialists.



Self-Disinfecting Ships

Act Clean Coat™ is a light-activated, self-disinfecting cleaning process that continuously breaks down viruses, bacteria, mold, and airborne allergens across all ship surfaces. This non-toxic, chemical-free system also helps us save over one million gallons of water each year in our cleaning procedures.