

A woman with short grey hair and glasses is smiling while holding a tennis racket on a green court. She is wearing a white polo shirt under a yellow and white striped vest. In the background, another person is visible on the court.

Hawaii Employer-Union Health Benefits Trust Fund

2022 Benefits for EUTF Retirees

For more information, call **808-432-5250** (Oahu) or **1-844-276-6628** (toll free from the neighbor islands).

Monday through Friday, 7 a.m. to 7 p.m., except holidays

Saturday, 9 a.m. to 1 p.m.

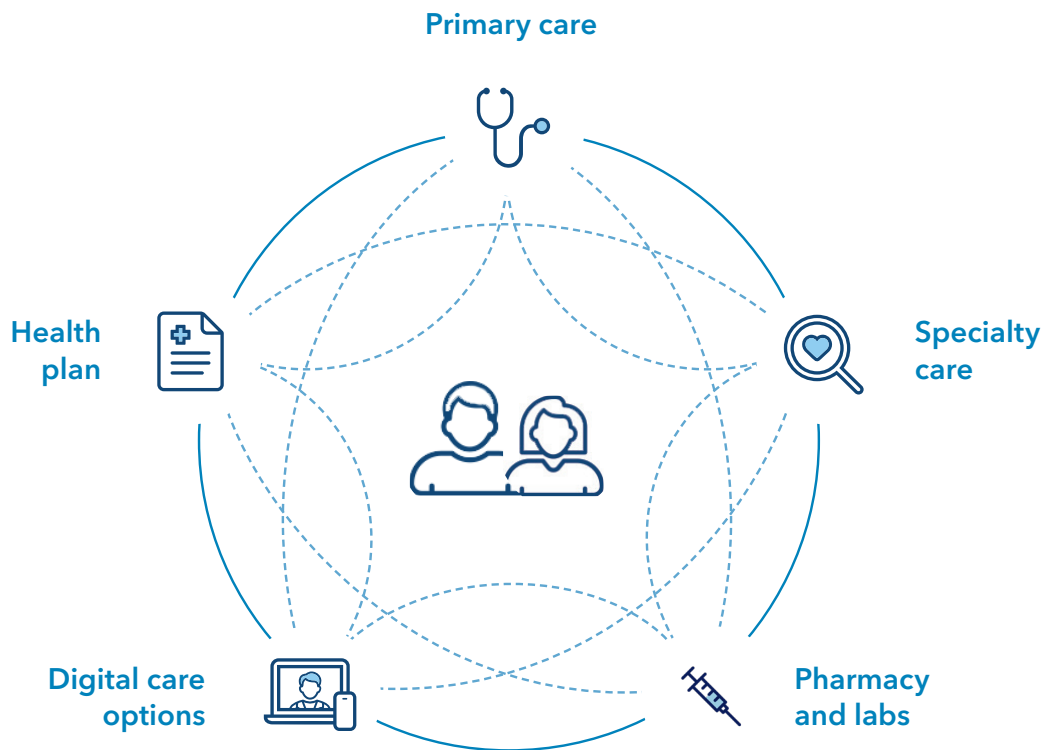
Visit **kp.org/eutf**



KAISER PERMANENTE® **thrive**

Great reasons to be a Kaiser Permanente member

Connected care helps make your life easier. We combine care and coverage, which makes us different than your other health care options. Your doctors, hospital, and health plan work together to help make getting the right care more convenient. Your care meets you where you are, because it's centered around you.



We offer peace of mind. All of our Kaiser Permanente doctors who accept new patients will accept new Medicare patients, so you don't have to worry about finding high-quality doctors. You also have a single electronic medical record that follows you wherever you go within Kaiser Permanente, so you can be reassured that your entire health care team is on the same page.

Helping to make care easy and simple. Our more than 20 locations statewide means you can get most of your care under one roof, close to home. That's less time spent driving in traffic and more time spent doing the things you love. You can save yourself a trip to the doctor's office entirely with our convenient digital care options, including video visits¹, phone appointments, emails to your doctor's office, and 24/7 nurse advice – all at no additional charge.

¹When appropriate and available. If you travel out of state, phone appointments and video visits may not be available due to state laws that may prevent doctors from providing care across state lines. Laws differ by state.

2022 EUTF Retiree Benefits	EUTF Non-Medicare (HMO) You pay	EUTF Medicare Senior Advantage (HMO)² You pay
Annual deductible	None	None
Maximum out-of-pocket (Individual/Family)	\$2,000 / \$6,000	\$2,000 / \$6,000
Hospital Inpatient		
Services while hospitalized	No charge	No charge
Outpatient		
Primary and specialty care	\$15 per visit	\$15 per visit
Preventive care and immunizations	No charge	No charge
Outpatient surgery	\$15 per visit	\$15 per visit
Lab, imaging, and testing	\$15 per visit	No charge
Ambulance services	20% of charges	20% of charges
Emergency room visits for initial treatment only (waived if admitted)	\$50 per visit at a facility within the Hawaii service area; 20% of charges at a facility outside the Hawaii service area	\$50 per visit worldwide
Mental Health and Chemical Dependency Services		
Inpatient care	No charge	No charge
Outpatient visits	\$15 per visit	\$15 per visit
Outpatient Prescription Drugs		
Pharmacy (30-day supply)	\$15 per prescription	\$15 per prescription
Mail order (90-day supply)	\$30 per prescription	\$30 per prescription
Additional Benefits		
Home health care	No charge	No charge
Hospice care	No charge for home and residential hospice	No charge for home and residential hospice
Durable medical equipment	20% of charges	20% of charges
Skilled nursing care	No charge, up to 100 days per benefit period	No charge, up to 100 days per benefit period

²Retirees 65 and older residing in the Kaiser Permanente Senior Advantage plan service area are required to enroll in EUTF's Kaiser Permanente Senior Advantage plan. Please refer to the non-Medicare benefits for Medicare members who reside outside the Kaiser Permanente Senior Advantage plan service area.

This is a summary of some benefits and their copayments and coinsurance. This chart does not describe benefits in detail. Please see your detailed benefit summary on kp.org/eutf for information about coverage, limitations, and exclusions for all benefits, including those not listed in this summary.

Kaiser Permanente is an HMO plan with a Medicare contract. Enrollment in Kaiser Permanente depends on contract renewal. You must reside in the Kaiser Permanente health plan service area in which you enroll.



Kaiser Foundation Health Plan, Inc.
711 Kapiolani Blvd.
Honolulu, HI 96813



Want to learn more? Call our Member Services.

Monday through Friday, 7 a.m. to 7 p.m. and
Saturday, 9 a.m. to 1 p.m. (closed holidays)

- **808-432-5250** (Oahu)
- **1-844-276-6628** (toll free from the neighbor islands)
- **711** (TTY)



A website just for you: kp.org/eutf

At [**kp.org/eutf**](https://kp.org/eutf), you'll find your Kaiser Permanente 2022 plan materials. You can also connect to our facility and physician directories and learn more about our services.



Growing to meet the needs of West Oahu

Our new West Oahu Medical Office at Kapolei opened in April 2021. Learn more at [**kp.org/westoahu**](https://kp.org/westoahu).