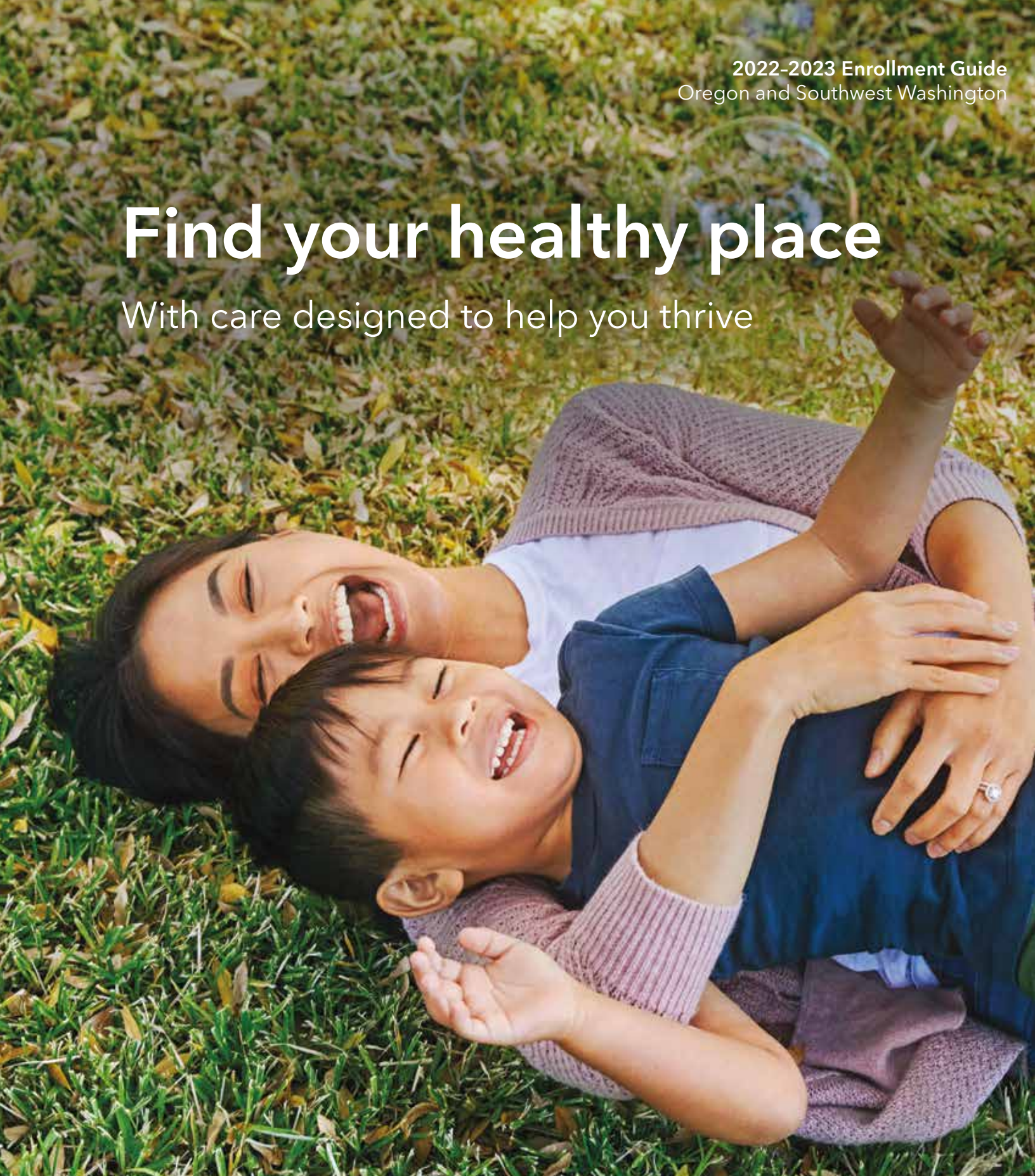


# Find your healthy place

With care designed to help you thrive





# Go where you feel like your best self

We can help you get to your healthy place – no matter where it is. Care at Kaiser Permanente can feel easier and faster, with the help of connected caregivers, more ways to get care, and support for the whole you. Welcome to care that helps fit your life.

**LEARN MORE ABOUT:**

- Care centered around you..... 3
- A great experience from the start ..... 4
- New member care transition ..... 5
- Convenient ways to get care ..... 6
- High-quality clinical care..... 7
- Specialty care, when you need it ..... 8
- Making the most of your membership ..... 9
- Save on wellness services and products..... 10
- Where to find care ..... 11-12
- Community is at our core..... 13

**Want to talk? We’re here to help.**

A Kaiser Permanente enrollment specialist can answer your questions – like where to get care or what options are included. Call **1-800-514-0985** (TTY **711**), Monday through Friday, 7 a.m. to 6 p.m. Pacific time.



# Care centered around you

Care at Kaiser Permanente isn't one-size-fits-all. Our physician-led teams work together to help provide care tailored to your needs. Your care team is all part of the same network, helping make it easier to share information, see your health history, and deliver high-quality, personalized care – when and where you need it.

## Your healthy place should reflect who you are

We believe your story, background, and values are as important as your health history. To help deliver care that's sensitive to your culture, ethnicity, and lifestyle, we:

- Hire doctors and staff who speak more than one language
- Offer phone interpretation services in more than 150 languages
- Improved health outcomes among diverse populations for conditions like high blood pressure, diabetes, and colon cancer\*

## Get coordinated care with the help of your electronic health record



**Share your health history** and any concerns with your personal doctor.



**Your doctor helps coordinate your care**, so you spend less time worrying about where to go or who to call next.



**Future care teams** have a full picture of your health history – without you having to repeat your story.



**With your health records in hand**, your care team knows your needs in the moment and reminds you to schedule checkups and tests. Plus, you can view your records 24/7.

\*Kaiser Permanente improved blood pressure control in our Black/African American members with hypertension, raised colorectal cancer screening rates in our Hispanic/Latino members, and improved blood sugar control in our members with diabetes. Self-reported race and ethnicity data are captured in Kaiser Permanente HealthConnect®, and HEDIS® measures are updated quarterly in the interregional CORE Datamart.

# A great experience from the start

Switching plans can seem like a lot of work, but at Kaiser Permanente, we help guide new members through each step. So you can get the care you need without missing a beat.



## Search profiles to find your preferred doctor

Our online doctor profiles let you browse the many doctors and locations in your area, even before you enroll. So you can join knowing you've found a doctor who helps fit your needs.



## Transition your care

Easily move prescriptions and schedule a visit with a doctor who's close to your home, work, or school. We strive to provide the support you need to help you reach your health goals.

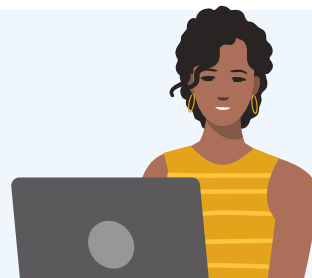


## Connect to care online

After you enroll, create an account at **kp.org** or download the Kaiser Permanente app.\* Then manage your health on your schedule – whenever, wherever.

## Health care doesn't have to be confusing

If you don't know an HMO from an HSA, you're not alone. But rest assured – we're here to help make health care easier to understand. Get help learning the basics at **healthy.kaiserpermanente.org/learn**.



\*To use the Kaiser Permanente app, you must be a Kaiser Permanente member registered on kp.org.

# New member care transition

Our goal is to help determine your unique needs and connect you with the doctors, specialists, and prescription medications to help effectively manage your care transition.

## Types of medical needs our New Member Welcome Desk can help with:



### Common needs

- Choose a doctor.
- Schedule a routine appointment.
- Transfer prescriptions.

Also available 24/7 for self-service at [kp.org](https://kp.org).



### Parent and child needs

- Select a pediatrician or family practice doctor.
- Transfer records and health history.
- Transfer prescriptions.
- Schedule vaccinations.



### Specialty care needs

- Connect with specialists such as oncologists, neurologists, and dermatologists.
- Connect with mental health professionals.
- Choose an ob-gyn and pediatrician.
- Determine durable medical equipment needs.



### Complex medical needs

- Connect with specialty care for conditions such as cancer, renal disease, pre-/post-surgery, and transplants.
- Connect with a pharmacy for specialty prescriptions.

Visit [kp.org/newmember](https://kp.org/newmember) for more information. To get started, contact the New Member Welcome Desk at **1-888-491-1124** (TTY **711**), Monday through Friday, 8 a.m. to 5 p.m.



# Convenient ways to get care

You've got more ways to get quality care than ever before, so it can be easier to stay on top of your health. Telehealth is covered at no additional cost with most plans.<sup>1</sup>



## NEW: 24/7 virtual care

Kaiser Permanente clinicians are available day or night, 24/7, for urgent care needs via on-demand video and phone, no appointment necessary.<sup>2,3,4</sup>



## Scheduled video or phone appointment

Schedule a face-to-face video visit or phone appointment with a Kaiser Permanente clinician or any specialists you've been referred to.<sup>2,3,4</sup>



## In-person care

We offer same-day, next-day, after-hours, and weekend services at many of our locations, including our Care Essentials by Kaiser Permanente retail clinics.<sup>4,5</sup>



## Email

Message your Kaiser Permanente doctor's office with nonurgent questions and get a reply usually within 2 business days.



## Prescription delivery

Use the Kaiser Permanente app to fill most prescriptions for delivery or same-day pickup. Most members get a 3-month supply of medication for the price of 2, and shipping is free.<sup>6</sup>



## 24/7 advice

Get support with 24/7 care advice by phone.



## E-visits

Complete an online questionnaire and receive a treatment plan, including prescriptions, if needed, within a few hours.<sup>7,8</sup>



## Care away from home

You're covered for urgent and emergency care anywhere in the world. And if you're planning to travel, we can help you stay on top of your health when you're away from home. Visit [kp.org/travel](https://kp.org/travel) to learn more.

<sup>1</sup>For high deductible health plan members, e-visits, phone visits, and video visits are subject to your plan's annual deductible.

<sup>2</sup>When appropriate and available.

<sup>3</sup>To have a video visit, members must be registered on [kp.org](https://kp.org) and have a camera-equipped computer or mobile device. If you travel out of state, phone and video visits may not be available due to state laws that may prevent doctors from providing care across state lines. Laws differ by state.

<sup>4</sup>These features are available when you get care at Kaiser Permanente facilities.

<sup>5</sup>In the case of a pandemic, some facilities may be closed or offer limited hours and services.

<sup>6</sup>Available on most prescription orders; additional fees may apply. For more information, contact the pharmacy. To use the Kaiser Permanente app, you must be a Kaiser Permanente member registered on [kp.org](https://kp.org).

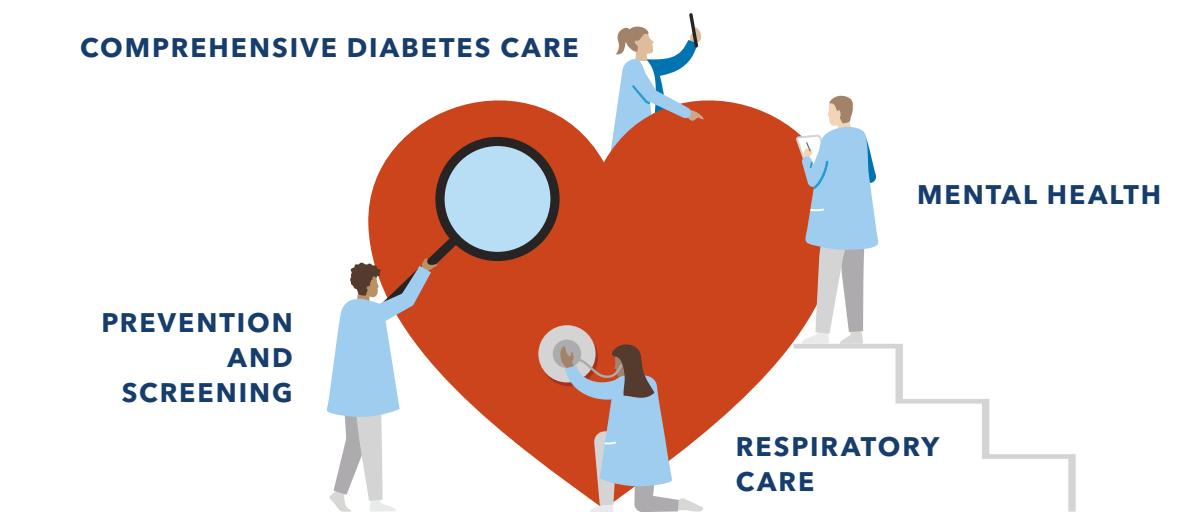
<sup>7</sup>Applicable cost shares will apply for services or items ordered during an e-visit.

<sup>8</sup>See note 1.

# High-quality clinical care

When your health needs serious attention, our team of specialty care doctors has you covered.

In 2021, Kaiser Permanente led the nation as the top performer in **42 effectiveness-of-care measures**. The closest national competitor led in only 14.\*



## A comprehensive approach to care

With our large and diverse multispecialty medical group, we help connect you with a specialist who will create a personalized plan for your care. To learn how our specialists work together in a connected system, visit [kp.org/specialtycare](https://kp.org/specialtycare).

## Support for ongoing conditions

If you have a condition like diabetes or heart disease, you're automatically enrolled in a disease management program for personal coaching and support. With a well-rounded approach backed by proven best practices and advanced technology, we'll help you get the care you need to continue living life to the fullest.

\*Kaiser Permanente 2021 HEDIS® scores. Benchmarks provided by the National Committee for Quality Assurance (NCQA) Quality Compass® and represent all lines of business. Kaiser Permanente combined region scores were provided by the Kaiser Permanente Department of Care and Service Quality. The source for data contained in this publication is Quality Compass 2021 and is used with the permission of NCQA. Quality Compass 2021 includes certain CAHPS data. Any data display, analysis, interpretation, or conclusion based on these data is solely that of the authors, and NCQA specifically disclaims responsibility for any such display, analysis, interpretation, or conclusion. Quality Compass® and HEDIS® are registered trademarks of NCQA. CAHPS® is a registered trademark of the Agency for Healthcare Research and Quality.

# Specialty care, when you need it

No matter your needs – mental health, maternity, cancer care, heart health, and more – you'll have access to skilled doctors, the latest technology, and evidence-based care to help you on your journey to recovery.



## Highest ratings for cardiac care

Since 2009, our Heart and Vascular Care team at Kaiser Permanente Sunnyside Medical Center has achieved the highest rating by the Society of Thoracic Surgeons, based on performance data for adult cardiac surgery. Visit [kp.org/cardiac/nw](https://kp.org/cardiac/nw) to learn more.



## Multidisciplinary approach to cancer care

Our patients get care from some of the brightest minds in medicine, with compassionate doctors educated and trained at top medical schools and universities. So it's no wonder that the Thoracic Surgery Program at Kaiser Permanente Sunnyside Medical Center is the nation's highest rated for lung cancer resection outcomes and patient care, according to the Society of Thoracic Surgeons.\* Visit [kp.org/cancer/nw](https://kp.org/cancer/nw) to learn more.



## Connected care for growing families

Having your baby at Kaiser Permanent means being supported by entire team of doctors, midwives, nurses, lactation consultants, and pediatricians – each of them working together, all for you. So, whether it's your first prenatal visit, a follow-up pediatric appointment, or beyond, our care follows you every step of the way. Visit [kp.org/maternity/nw](https://kp.org/maternity/nw) to learn more.



## Support for mental health and addiction

Because mind and body are connected, your thoughts and feelings have a big impact on your overall well-being – that's why we're committed to helping you stay mentally, physically, and emotionally healthy. Visit [kp.org/selfcare](https://kp.org/selfcare) to explore no-cost self-care tools, discover tips for your emotional well-being, take a self-assessment, or connect directly to care. Learn more about our robust addiction medicine program at [kp.org/addiction/nw](https://kp.org/addiction/nw).

\*Society of Thoracic Surgeons: [publicreporting.sts.org/gtsd?title=&field\\_state\\_value=All&order=field\\_overall\\_composite\\_score&sort=desc](https://publicreporting.sts.org/gtsd?title=&field_state_value=All&order=field_overall_composite_score&sort=desc)



# Making the most of your membership

Good health goes beyond the doctor's office. Find your healthy place by exploring some of the convenient features and extras available to members.<sup>1</sup> Many of these resources are available at no additional cost.



## Kaiser Permanente app

Manage your health 24/7 – schedule appointments, email your doctor's office with nonurgent questions, order most prescription refills, see most test results, pay bills, read your doctor's notes, and more.<sup>2</sup>



## Reduced rates on gym memberships

Stay active by joining a local fitness center, plus enjoy thousands of digital workout videos. Learn more at [kp.org/choosehealthy](https://kp.org/choosehealthy).



## Healthy lifestyle programs

Connect to better health with programs to help you lose weight, quit smoking, reduce stress, and more – all at no additional cost. Learn more at [kp.org/healthylifestyles](https://kp.org/healthylifestyles).



## Wellness coaching

Get help reaching your health goals by working one-on-one with a wellness coach by phone. Learn more at [kp.org/wellnesscoach](https://kp.org/wellnesscoach).

## Extras for your total health<sup>3</sup>

As a Kaiser Permanente member, you have access to a wide range of tools to help you manage your total health. Visit [kp.org/mentalhealth](https://kp.org/mentalhealth) to learn more.



Members can use meditation and mindfulness to help build mental resilience, reduce stress, and improve sleep.



Members can set mental health goals, track progress, and get support managing depression, anxiety, and more.



This preventive, on-demand approach to mental health provides support anywhere, anytime.

<sup>1</sup>These services aren't covered under your health plan benefits and aren't subject to the terms set forth in your *Evidence of Coverage* or other plan documents. These services may be discontinued at any time without notice.

<sup>2</sup>These features apply to care you get at Kaiser Permanente facilities. To use the Kaiser Permanente app, you must be a Kaiser Permanente member registered on [kp.org](https://kp.org).

<sup>3</sup>Only available to Kaiser Permanente members with medical coverage; myStrength® is a trademark of Livongo Health, Inc., a wholly owned subsidiary of Teladoc Health, Inc.

# Save on wellness services and products

At Kaiser Permanente, you can enjoy discounted online tools, classes, programs, and activities that can help keep you happy and healthy. Visit [kp.org/memberdiscounts](https://kp.org/memberdiscounts) for more information.

## **CHP Active and Healthy**

This program can help you and your family save money on your favorite healthy, fun, and stress-relieving activities.

Explore the below options and more at [chpactiveandhealthy.com](https://chpactiveandhealthy.com).

### **Outdoor and adventure**

Save on rock-climbing gyms, outdoor schools, guided fishing trips, ski rentals, and other activities that will get you out and about.

### **Arts and culture**

Get discounts that will help you explore local museums, gardens, art galleries, and performing arts centers. You can also save on music lessons and get discounted movie tickets.

### **Exercise**

From boot camps, martial arts classes, and health and fitness clubs, to aquatic centers, dance studios, and personal training lessons, you can save on a host of exercise-related memberships and services.

### **Eating well**

You'll find deals on cooking classes, nutritional supplements, weight management services, gardening supplies, and more.

## **Alternative care and chiropractic**

Get discounts on naturopathic medicine, acupuncture, chiropractic care, massage, and other alternative therapies from providers belonging to The CHP Group network. Visit [chpgroup.com](https://chpgroup.com) to learn more and select your provider.

## **ChooseHealthy®**

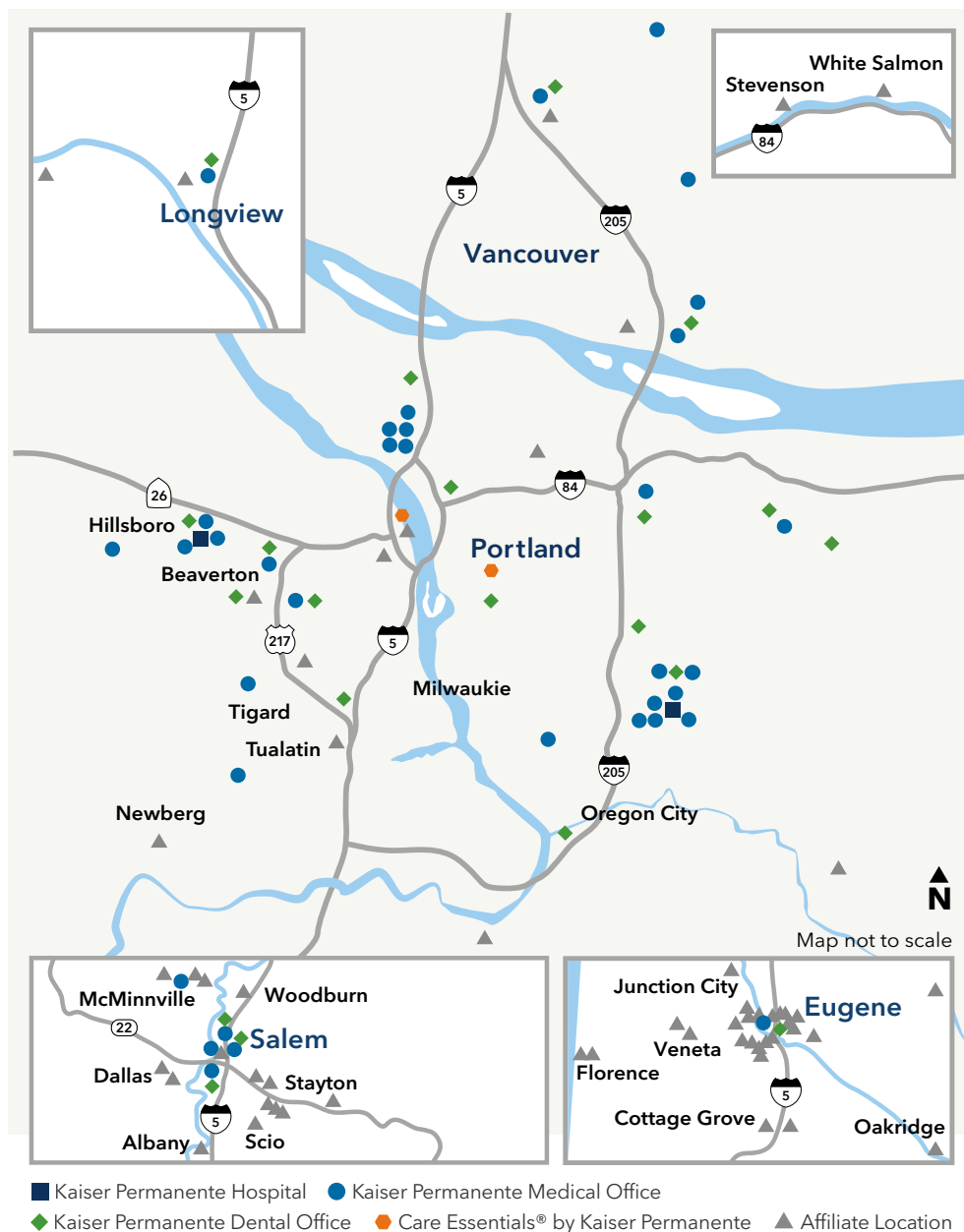
With the ChooseHealthy program, you can continue on the road to wellness. ChooseHealthy is an online resource for health information, health and fitness tools, and discounts on health products. This program is available at no additional cost to you. Learn more at [kp.org/choosehealthy](https://kp.org/choosehealthy).

- Plan your meals for the month with meal plans that are suited to your tastes, fitness level, and weight goals.
- Get personalized cardio and strength training plans based on your fitness goals.
- Get savings like membership discounts and initiation fee discounts at more than 100 fitness clubs, yoga studios, and exercise centers from Longview, Washington, to Eugene, Oregon.

These products and services are provided by entities other than Kaiser Foundation Health Plan of the Northwest (KFHPNW). Certain KFHPNW benefit plans include coverage for some of these discounted services. Check your *Evidence of Coverage* for details. KFHPNW disclaims any liability for these discounted products and services. Should a problem arise, you may take advantage of our grievance process by calling Member Services at 1-800-813-2000 (TTY 711).

# Where to find care in Oregon and Southwest Washington

Our service area extends from Eugene, Oregon, to Longview, Washington, and includes medical offices, dental offices, Vision Essentials by Kaiser Permanente optical retail locations, urgent care clinics, hospitals, and Care Essentials clinics. We also have a network of affiliated providers for routine, urgent, or emergency care.



# Where to find care in Oregon and Southwest Washington



## Dental

With Kaiser Permanente's coordinated medical and dental care and coverage, it can be simpler to take care of your total health. Our skilled dentists, convenient dental locations, and quality services will help make you smile. Learn more at [kp.org/dental/nw](https://kp.org/dental/nw).



## Pharmacy

Most of our Kaiser Permanente medical offices include pharmacy services. You also have the option of using our mail-order pharmacy service to fill and refill most prescriptions.



## Vision Essentials by Kaiser Permanente

Our optometrists, ophthalmologists, and opticians work together within our integrated care delivery system and are able to connect to our larger team of medical professionals and services.

Learn more at [kp2020.org/pacnw](https://kp2020.org/pacnw).



## Care Essentials by Kaiser Permanente

Care Essentials by Kaiser Permanente are convenient care clinics that provide nonemergency and preventive health services to both Kaiser Permanente members and nonmembers.

- Treatment for minor illnesses and injuries
- Preventive services, including checkups, vaccinations, and some lab and diagnostic testing

Learn more at [careessentials.org](https://careessentials.org).



## Affiliate Providers

Kaiser Permanente health plans include access to affiliate providers for primary and specialty care, including The Portland Clinic.\*

\*Not available as an in-network provider to members on Medicaid, receiving full Medical Financial Assistance from Kaiser Permanente, or visiting from another Kaiser Permanente region.

# Community is at our core

Kaiser Permanente furthers our mission with initiatives that help people address the clinical, social, economic, and environmental factors that affect their health. This work enlists our entire organization and region: doctors, dentists, nurses, technicians, navigators, employees, and our community partners from Longview, Washington, to Eugene, Oregon.

In 2021, Kaiser Permanente dedicated **more than \$144 million** to initiatives that help improve the total health of our members and the communities we serve.\*

**19,393**

medically tailored meals delivered as part of a pilot program with Meals on Wheels People to study health care utilization and other health outcomes related to chronic diseases

**365**

medically vulnerable houseless seniors placed in permanent housing

**988**

students engaged in Kaiser Permanente's Educational Theatre Program

**8,172**

people who accessed services through Connect Oregon and Unite Washington to get help with social health needs

**25,680**

hours of community service by Kaiser Permanente Northwest employees

**\$144,470,353**

invested in community health initiatives across the Northwest

\*Kaiser Permanente Community Health Snapshot 2021, [about.kaiserpermanente.org/content/dam/internet/kp/comms/community-health/northwest/KPNW-CH-Snapshot.pdf](https://about.kaiserpermanente.org/content/dam/internet/kp/comms/community-health/northwest/KPNW-CH-Snapshot.pdf).



## **Nondiscrimination Notice**

Kaiser Foundation Health Plan of the Northwest (Kaiser Health Plan) complies with applicable federal and state civil rights laws and does not discriminate on the basis of race, color, national origin, age, disability, sex, gender identity, or sexual orientation. Kaiser Health Plan does not exclude people or treat them differently because of race, color, national origin, age, disability, sex, gender identity, or sexual orientation. We also:

- Provide no cost aids and services to people with disabilities to communicate effectively with us, such as:
  - Qualified sign language interpreters
  - Written information in other formats, such as large print, audio, and accessible electronic formats
- Provide no cost language services to people whose primary language is not English, such as:
  - Qualified interpreters
  - Information written in other languages

If you need these services, call Member Services at **1-800-813-2000** (TTY: **711**).

If you believe that Kaiser Health Plan has failed to provide these services or discriminated in another way on the basis of race, color, national origin, age, disability, sex, gender identity, or sexual orientation, you can file a grievance with our Civil Rights Coordinator, by mail, phone, or fax. If you need help filing a grievance, our Civil Rights Coordinator is available to help you. You may contact our Civil Rights Coordinator at: Member Relations Department, Attention: Kaiser Civil Rights Coordinator, 500 NE Multnomah St. Ste 100, Portland, OR 97232-2099, Phone: **1-800-813-2000** (TTY: **711**), Fax: **1-855-347-7239**.

You can also file a civil rights complaint with the U.S. Department of Health and Human Services, Office for Civil Rights, electronically through the Office for Civil Rights Complaint portal, available at <https://ocrportal.hhs.gov/ocr/portal/lobby.jsf>, or by mail or phone at: U.S. Department of Health and Human Services, 200 Independence Avenue SW, Room 509F, HHH Building, Washington, DC 2020, Phone: 1-800-368-1019, TDD: 1-800-537-7697. Complaint forms are available at [www.hhs.gov/ocr/office/file/index.html](http://www.hhs.gov/ocr/office/file/index.html).

## **For Washington Members**

You can also file a complaint with the Washington State Office of the Insurance Commissioner, electronically through the Office of the Insurance Commissioner Complaint portal, available at <https://www.insurance.wa.gov/file-complaint-or-check-your-complaint-status>, or by phone at 1-800-562-6900, or 360-586-0241 (TDD). Complaint forms are available at <https://fortress.wa.gov/oic/onlineServices/cc/pub/complaintinformation.aspx>.

## Help in Your Language

**ATTENTION:** If you speak English, language assistance services, free of charge, are available to you. Call **1-800-813-2000** (TTY: **711**).

**አማርኛ (Amharic) ማሳሰቢያ:** የሚናገሩት ቋንቋ አማርኛ ከሆነ የትርጉም እርዳታ ድርጅቶች፣ በነጻ ሊያግዝዎት ተዘጋጅተዋል፡ ወደ ሚከተለው ቁጥር ይደውሉ **1-800-813-2000** (TTY: **711**).

**العربية (Arabic) ملحوظة:** إذا كنت تتحدث العربية، فإن خدمات المساعدة اللغوية تتوافر لك بالمجان. اتصل برقم **1-800-813-2000** (TTY: **711**).

**中文 (Chinese) 注意:** 如果您使用繁體中文，您可以免費獲得語言援助服務。請致電**1-800-813-2000** (TTY: **711**)。

**فارسی (Farsi) توجه:** اگر به زبان فارسی گفتگو می کنید، تسهیلات زبانی بصورت رایگان برای شما فراهم می باشد. با **1-800-813-2000** (TTY: **711**) تماس بگیرید.

**Français (French) ATTENTION:** Si vous parlez français, des services d'aide linguistique vous sont proposés gratuitement. Appelez le **1-800-813-2000** (TTY: **711**).

**Deutsch (German) ACHTUNG:** Wenn Sie Deutsch sprechen, stehen Ihnen kostenlos sprachliche Hilfsdienstleistungen zur Verfügung. Rufnummer: **1-800-813-2000** (TTY: **711**).

**日本語 (Japanese) 注意事項:** 日本語を話される場合、無料の言語支援をご利用いただけます。**1-800-813-2000** (TTY: **711**) まで、お電話にてご連絡ください。

**ខ្មែរ (Khmer) ប្រយ័ត្ន:** បើសិនជាអ្នកនិយាយ ភាសាខ្មែរ, សេវាជំនួយផ្នែកភាសា ដោយមិនគិតថ្លៃ គឺអាចមានសំរាប់អ្នក។ ចូរ ទូរស័ព្ទ **1-800-813-2000** (TTY: **711**)។

**한국어 (Korean) 주의:** 한국어를 사용하시는 경우, 언어 지원 서비스를 무료로 이용하실 수 있습니다. **1-800-813-2000** (TTY: **711**) 번으로 전화해 주십시오.

**ລາວ (Laotian) ໂປດຊາບ:** ຖ້າວ່າ ທ່ານເວົ້າພາສາ ລາວ, ການບໍລິການຊ່ວຍເຫຼືອດ້ານພາສາ, ໂດຍບໍ່ເສັຽຄ່າ, ແມ່ນມີ ພ້ອມໃຫ້ທ່ານ. ໂທ **1-800-813-2000** (TTY: **711**).

**Afaan Oromoo (Oromo) XIYYEEFFANNAA:** Afaan dubbattu Oroomiffa, tajaajila gargaarsa afaanii, kanfaltiidhaan ala, ni argama. Bilbilaa **1-800-813-2000** (TTY: **711**).

**ਪੰਜਾਬੀ (Punjabi) ਧਿਆਨ ਦਿਓ:** ਜੇ ਤੁਸੀਂ ਪੰਜਾਬੀ ਬੋਲਦੇ ਹੋ, ਤਾਂ ਭਾਸ਼ਾ ਵਿੱਚ ਸਹਾਇਤਾ ਸੇਵਾ ਤੁਹਾਡੇ ਲਈ ਮੁਫਤ ਉਪਲਬਧ ਹੈ। **1-800-813-2000** (TTY: **711**) 'ਤੇ ਕਾਲ ਕਰੋ।

**Română (Romanian) ATENȚIE:** Dacă vorbiți limba română, vă stau la dispoziție servicii de asistență lingvistică, gratuit. Sunați la **1-800-813-2000** (TTY: **711**).

**Русский (Russian) ВНИМАНИЕ:** если вы говорите на русском языке, то вам доступны бесплатные услуги перевода. Звоните **1-800-813-2000** (TTY: **711**).

**Español (Spanish) ATENCIÓN:** si habla español, tiene a su disposición servicios gratuitos de asistencia lingüística. Llame al **1-800-813-2000** (TTY: **711**).

**Tagalog (Tagalog) PAUNAWA:** Kung nagsasalita ka ng Tagalog, maaari kang gumamit ng mga serbisyo ng tulong sa wika nang walang bayad. Tumawag sa **1-800-813-2000** (TTY: **711**).

**ไทย (Thai) เรียน:** ถ้าคุณพูดภาษาไทย คุณสามารถใช้บริการช่วยเหลือทางภาษาได้ฟรี โทร **1-800-813-2000** (TTY: **711**).

**Українська (Ukrainian) УВАГА!** Якщо ви розмовляєте українською мовою, ви можете звернутися до безкоштовної служби мовної підтримки. Телефонуйте за номером **1-800-813-2000** (TTY: **711**).

**Tiếng Việt (Vietnamese) CHÚ Ý:** Nếu bạn nói Tiếng Việt, có các dịch vụ hỗ trợ ngôn ngữ miễn phí dành cho bạn. Gọi số **1-800-813-2000** (TTY: **711**).

# Let us help you find your healthy place

A good health plan and access to quality care can be important for peace of mind. With Kaiser Permanente, you can get both.

## Want to learn more?

Talk to an enrollment specialist today about specialty care, extra features, and more.

Call **1-800-514-0985** (TTY **711**),  
Monday through Friday, 7 a.m. to 6 p.m. PT.

Visit **kp.org/myhealthyplace** to see how we can make your care experience easier, no matter what stage of life you're in.

## Member Services

**1-800-813-2000** (English)

**1-800-324-8010** (language interpretation services)  
**711** (TTY)

Monday through Friday, 8 a.m. to 6 p.m.

## New Member Welcome Desk

**1-888-491-1124**

Monday through Friday, 8 a.m. to 5 p.m.

## New Member Pharmacy Services

**1-888-572-7231**

Monday through Friday, 8 a.m. to 6 p.m.



Find a facility near you: **kp.org/locations**

Kaiser Foundation Health Plan of the Northwest  
500 NE Multnomah St., Suite 100  
Portland, OR 97232

For more information about Kaiser Permanente benefits, availability, and restrictions, go to **kp.org/disclosures**. (Click on "Forms" and then "Related links.")