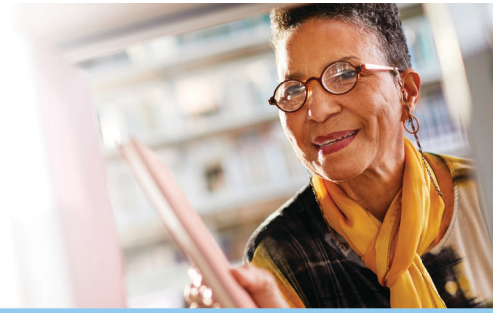


Feel your best with even more benefits included in your plan



With a Kaiser Permanente Group Medicare health plan, you get high-quality care that fits your life – plus these extra benefits built right into your plan.



Stay active with One Pass®

One Pass® provides access to the largest nationwide network of 27,000+ gym and fitness locations, online workouts, brain health tools, and social activities to keep you fit and healthy.*



Get home delivery for health and wellness aids

Use our online catalog to order over-the-counter (OTC) pain relievers, first-aid kits, joint supports, blood pressure monitors, thermometers, and more, that can be delivered to your home at no extra cost.**



Access care with our transportation benefit

Get rides for doctor appointments, medical services like lab or X-ray, and picking up medications or medical equipment.



Simplify your recovery with meal delivery

To help you recover after an inpatient hospital or skilled nursing facility stay, get fresh meals delivered right to you – including heart-healthy, diabetic-friendly, and gluten-free options.

Ready to enroll? Have questions?

Call us at **1-855-717-9598** (TTY **711**), 7 a.m. to 6 p.m. Monday through Friday, or contact your benefits administrator.

Or visit
kp.org/calpers/retirees

Kaiser Permanente is an HMO plan with a Medicare contract. Enrollment in Kaiser Permanente depends on contract renewal. You must reside in the Kaiser Permanente Medicare health plan service area in which you enroll.

*One Pass® is a registered trademark of Optum, Inc. in the U.S. and other jurisdictions and is a voluntary program.

**OTC benefits may change each year on January 1. Each purchase must be at least \$70. Shipments must be delivered at an address within <<region>>. Your benefit limit resets on January 1, April 1, July 1, and October 1. Any unused portion of the quarterly benefit will not carry forward to the next quarter. Your order may not exceed your quarterly benefit limit. Limitations and restrictions may apply. Cash, checks, credit cards, or money orders are not accepted.