

# Beyond Tier 1

## Delivering Transparency in High-Risk Supply Chains

### Top & Stone Fruit

As a responsible retailer, Co-op takes very seriously the labour conditions of any workers involved in the production of Co-op brand products. Our Co-op Future of Food strategy for a sustainable future sets out a range of human rights goals and commitments, along with detailed targets for achieving these long-term goals.

One of our commitments is focused on supply chain transparency. In 2019, we identified eight priority areas of activity, covering 17 sourcing countries and 75% of all workers in the scope of the Ethical Trade Programme. Consequently, we published a list of our Tier 1 supply chain, including disaggregated worker data. For further information please click [here](#).

This publication builds on our commitments to transparency and human rights by publishing the details of suppliers at all tier levels for four high-risk supply chains (i.e. supply chains that we consider high risk to workers): top and stone fruit, warm water prawns and pork.

We have worked closely with suppliers to collect as much data as possible and will continue to collaborate to gain greater understanding of the challenges that workers in our supply chains face and to inform our approach to ethical trading.

All information has been shared by our Tier 1 suppliers on behalf of their supply base. In some cases, information has been withheld or anonymised to protect privacy. If you have a query on a specific supplier or site, please email us at [ethicaltrade@coop.co.uk](mailto:ethicaltrade@coop.co.uk).



It's what we do

# Top & Stone Fruit

Top fruit is a generic term for fruit that is grown on trees rather than bushes, such as apples and pears. Similarly, stone fruit is a generic term for fruit that contains a large stone or pit at the centre, and includes apricots, cherries, nectarines, peaches and plums. Both are seasonal crops and need to be sourced from different continents and countries throughout the year to ensure consistency in quality and supply.

## Human rights risks and challenges in the supply chain

Fruit has been identified as one of our top eight highest risk areas within ethical trade. This is because fruit supply chains, wherever they are found, are seasonal in nature and attract a large number of migrant workers to low wage, unskilled and temporary jobs.

These workers are economically vulnerable and frequently have little education or ability to speak the local language. Due to fear of reprisals, they are also unlikely to voice any concerns about their living or working conditions, while regulation and inspection of labour recruiters and working practices can in some countries be weak.

With global trends like Brexit, Covid-19 and geo-political uncertainty, it is becoming increasingly difficult for growers to find enough workers to fulfil orders. Employers are at risk of using unethical third-party labour providers who cut corners on proper recruitment processes, creating an increased risk of modern slavery. Women are particularly vulnerable to exploitation.

Human traffickers are also becoming more intelligent in how they operate, knowing that, should workers turn up at work malnourished or unkempt, they are likely to be investigated. Now more than ever it is important to raise awareness of the issues and to provide support to growers during the recruitment process in order to ensure workers' rights.

## How is Co-op taking action?

Co-op and its fruit supplier Dole UK Ltd have established a strong relationship that supports stability and ethical decision making. Most recently, Co-op supported a Direct Worker Engagement exercise with &Wider's worker survey tool on a fruit farm in Stellenbosch, South Africa, in partnership with fruit supplier, Dole UK Ltd. Direct Worker Engagement involves the use of mobile phones for workers to raise work-related issues directly.

Co-op sources top and stone fruit from a number of countries within scope of our [eight priority areas](#) of human rights activity, including the UK, South Africa, Spain and Italy.

For more information about our human rights activity in the UK, please refer to our web page [here](#).

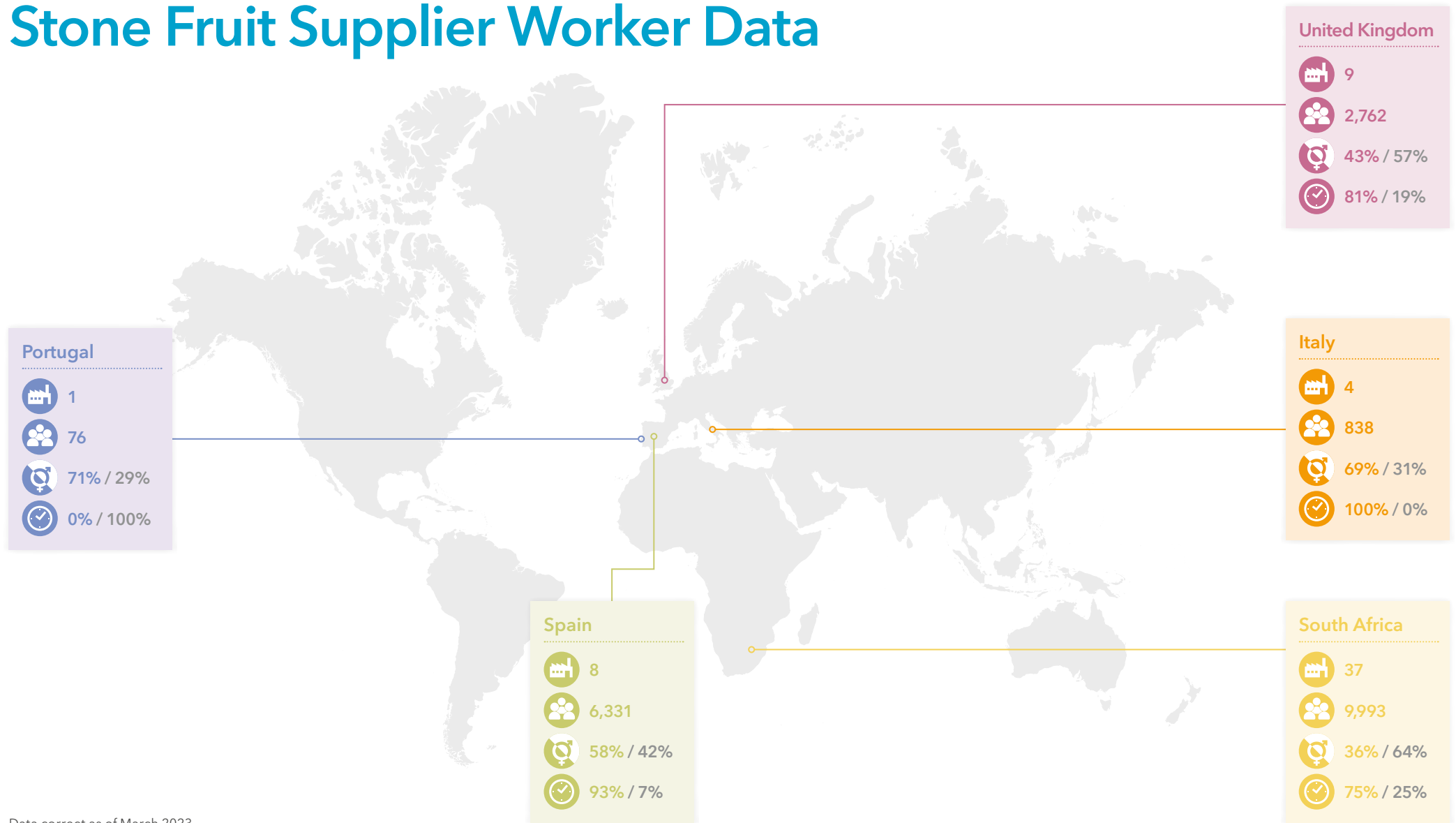
For more information about our human rights activity in South Africa, please refer to our web page [here](#).

For more information about our human rights activity in Spain, please refer to our web page [here](#).

For more information about our human rights activity in Italy, please refer to our web page [here](#).



# Stone Fruit Supplier Worker Data



Data correct as of March 2023



**59**  
Total sites



**20,000**  
Total workers



**46%**  
Female-identifying workers

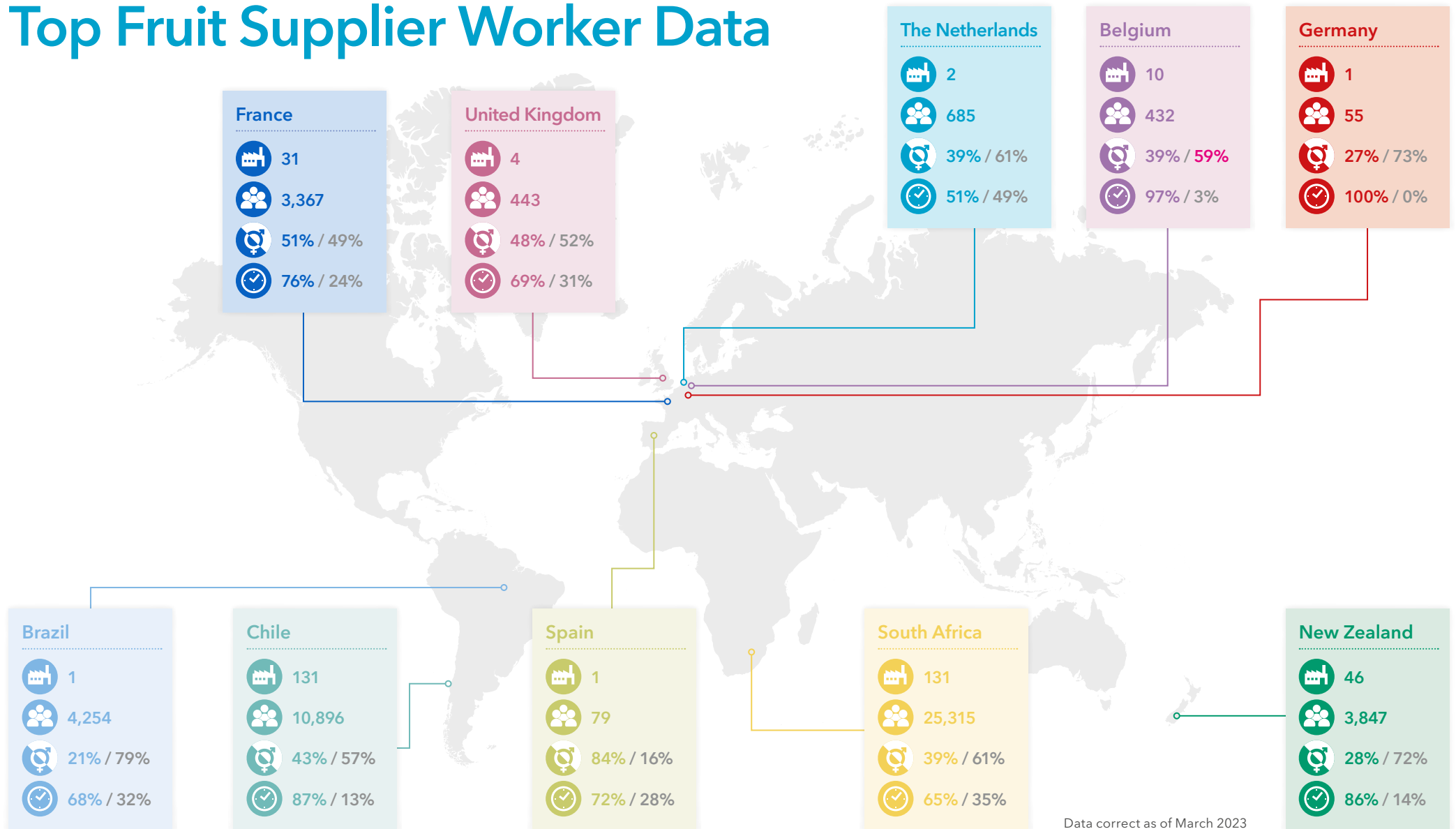
**54%**  
Male-identifying workers



**82%**  
Temporary workers

**18%**  
Permanent workers

# Top Fruit Supplier Worker Data



Data correct as of March 2023



**358**  
Total sites



**49,373**  
Total workers



**38%**  
Female-identifying workers

**62%**  
Male-identifying workers



**73%**  
Temporary workers

**27%**  
Permanent workers

# Stone Fruit

Supplier Name	Site Name	Tier	Site Type	Products Supplied	Country	Total Worker Number	% Male Identifying Workers	% Female Identifying Workers	% Permanent Workers	% Agency/Temporary Workers	Presence of Trade Union and/or worker committee
Catenaro (Rimfruit)	Rimfruit Op Societa Cooperative Agricola	1	Grower/Packer	Apricots, Nectarines, Peaches, Plums	Italy	28	46%	54%	11%	89%	No
Op Granfrutta Zani	Bagnacavallo	1	Grower/Packer	Apricots, Nectarines, Peaches, Plums	Italy	405	23%	77%	0%	100%	Yes, Trade Union
Op Granfrutta Zani	Sant'andrea	1	Grower/Packer	Apricots, Nectarines, Peaches, Plums	Italy	306	31%	69%	0%	100%	Yes, Trade Union
Societa Agricola Brero F.Ili Giuseppe E Emaurizio S.s.	Societa Agricola Brero F.Ili Giuseppe E Emaurizio S.s.	1	Grower/Packer	Nectarines, Peaches, Plums	Italy	99	60%	40%	0%	100%	Yes, worker committee
Emergosol	Herdade Dona Isabel	2	Grower	Plums	Portugal	76	29%	71%	100%	0%	No
Icon Fruit	Wdbl Agri (Pty) Ltd T/A Morelig	2	Packhouse/Grower	Apricots, Plums	South Africa	373	37%	63%	15%	85%	No
Du Toit Agri	Du Toit Agri (Bokkefontein)	3+	Grower	Cherries	South Africa	4,254	79%	21%	7%	93%	Yes, Trade Union
Icon Fruit	Karsten Lourensford	2	Packhouse/Grower	Apricots, Plums	South Africa	177	80%	20%	55%	45%	Yes, Trade Union
Icon Fruit	Boschendal	3+	Grower	Apricots, Plums	South Africa	151	56%	44%	100%	0%	Yes, Trade Union
Icon Fruit	Jean Pierre Boerdery T/A Goedemoed	3+	Grower	Apricots, Plums	South Africa	74	51%	49%	64%	36%	Yes, Trade Union
Icon Fruit	Imibala Orchards	2	Packhouse/Grower	Apricots, Plums	South Africa	252	41%	59%	21%	79%	Yes, Trade Union
Timberlea Farming Trust (Proudly Produce)	Timberlea	2	Grower/Packer	Nectarines, Peaches	South Africa	250	34%	66%	55%	45%	Yes, Trade Union
Timberlea Farming Trust (Proudly Produce)	Bokkeveld Partnership	3	Grower	Nectarines, Peaches	South Africa	561	77%	23%	37%	63%	Yes, Trade Union
Du Toit Agri	Buchuland	3+	Grower	Cherries	South Africa	93	84%	16%	81%	19%	Yes, worker committee
Du Toit Agri	Verrekyker 1722 Boerdery Bk	3+	Grower	Cherries	South Africa	58	76%	24%	24%	76%	Yes, worker committee
Icon Fruit	Weltevrede	3+	Grower	Apricots, Plums	South Africa	48	100%	0%	48%	52%	Yes, worker committee
Icon Fruit	Karsten Hoogland	3+	Grower	Apricots, Plums	South Africa	357	76%	24%	22%	78%	Yes, worker committee
Icon Fruit	Anine Taylor Trust T/A Gelukshoop	3+	Grower	Apricots, Plums	South Africa	45	89%	11%	22%	78%	Yes, worker committee
Icon Fruit	Excise	3+	Grower	Apricots, Plums	South Africa	40	17.5%	82.5%	20%	80%	Yes, worker committee
Icon Fruit	Salomonsvlei	2	Packhouse/Grower	Apricots, Plums	South Africa	80	46%	54%	15%	85%	Yes, worker committee
Icon Fruit	P.e.s Linde Familie Trust T/A Bruintjieskraal	3+	Grower	Apricots, Plums	South Africa	14	57%	43%	29%	71%	Yes, worker committee
Icon Fruit	Klipberg Agri T/A Koringsrivier Boerdery	3+	Grower	Apricots, Plums	South Africa	97	62%	38%	15%	85%	Yes, worker committee
Icon Fruit	Lucerne Pack (Pty) Ltd	1	Packhouse	Apricots, Plums	South Africa	320	37%	63%	14%	86%	Yes, worker committee
Icon Fruit	Misgund Jp Orffer En Seun (Edms) Bpk	2	Packhouse/Grower	Apricots, Plums	South Africa	74	64%	36%	53%	47%	Yes, worker committee
Icon Fruit	Mount Joy	2	Packhouse/Grower	Apricots, Plums	South Africa	250	46%	54%	8%	92%	Yes, worker committee
Icon Fruit	T.I. Steyn Boerdery T/A Buffelskloof	2	Packhouse/Grower	Apricots, Plums	South Africa	32	50%	50%	38%	63%	Yes, worker committee
Icon Fruit	Spreierfontein Boerdery	2	Packhouse/Grower	Apricots, Plums	South Africa	62	65%	35%	10%	90%	Yes, worker committee
Icon Fruit	Lofpoort	2	Packhouse/Grower	Apricots, Plums	South Africa	95	45%	55%	19%	81%	Yes, worker committee
Icon Fruit	Elandsrivier Boerdery (Mondon Estate, Trevor's Farm, Tweefontein, Thembelitsha)	2	Packhouse/Grower	Apricots, Plums	South Africa	185	56%	44%	28%	72%	Yes, worker committee
Icon Fruit	Roodehoogte Plase	2	Packhouse/Grower	Apricots, Plums	South Africa	57	60%	40%	67%	33%	Yes, worker committee
Icon Fruit	Mont Rouge Boerdery Bk	2	Packhouse/Grower	Apricots, Plums	South Africa	50	62%	38%	66%	34%	Yes, worker committee
Icon Fruit	Elandsrivier Boedery (Mondon Estate, Trevor's Farm, Tweefontein, Thembelitsha)	3+	Grower	Apricots, Plums	South Africa	26	73%	27%	92%	8%	Yes, worker committee
Icon Fruit	Sonlia Vrugte Verpakkers	1	Packhouse	Apricots, Plums	South Africa	313	18%	82%	74%	26%	Yes, worker committee
Icon Fruit	La Rhone Family Trust	2	Packhouse/Grower	Apricots, Plums	South Africa	164	59%	41%	58%	42%	Yes, worker committee

## Beyond Tier 1 Delivering Transparency in High-Risk Supply Chains: Top & Stone Fruit



Supplier Name	Site Name	Tier	Site Type	Products Supplied	Country	Total Worker Number	% Male Identifying Workers	% Female Identifying Workers	% Permanent Workers	% Agency/Temporary Workers	Presence of Trade Union and/or worker committee
Icon Fruit	Fruit 2u (Pty) Ltd	1	Packhouse	Apricots, Plums	South Africa	412	31%	69%	39%	61%	Yes, worker committee
Icon Fruit	Frupak (Pty) Ltd	1	Packhouse	Apricots, Plums	South Africa	238	31%	69%	64%	36%	Yes, worker committee
Icon Fruit	Kommandantsdrift	2	Packhouse/Grower	Apricots, Plums	South Africa	53	77%	23%	49%	51%	Yes, worker committee
Icon Fruit	Koo Orchards T/A Protea Landgoed	3+	Grower	Apricots, Plums	South Africa	15	67%	33%	100%	0%	Yes, worker committee
Icon Fruit	Loubser Landgoed	2	Packhouse/Grower	Apricots, Plums	South Africa	47	55%	45%	60%	40%	Yes, worker committee
Icon Fruit	A.w Eksteen Boerdery	3+	Grower	Apricots, Plums	South Africa	197	47%	53%	41%	59%	Yes, worker committee
Icon Fruit	Driefontein (Ghv)	3+	Grower	Apricots, Plums	South Africa	433	67%	33%	21%	79%	Yes, worker committee
Icon Fruit	Modderasrivier	2	Packhouse/Grower	Apricots, Plums	South Africa	46	52%	48%	15%	85%	Yes, worker committee
Cerima Cherries	Production De Cirera Ribera D'ebre SI	2	Grower/Packer	Cherries	Spain	163	39%	61%	6%	94%	No
Campo Y Tierra (Jerte Fruit)	Campo Y Tierra (Jerte Fruit)	1	Grower/Packer	Cherries	Spain	99	65%	35%	29%	71%	Yes, Trade Union
El Ciruelo SI	Agronativa Alhama	1	Grower/Packer	Apricots, Nectarines, Peaches, Plums	Spain	779	32%	68%	32%	68%	Yes, Trade Union
El Ciruelo SI	Agronativa Cieza	1	Grower/Packer	Apricots, Nectarines, Peaches, Plums	Spain	787	38%	62%	8%	92%	Yes, Trade Union
Fresh Royal S.I	Hacienda Murillo	2	Grower	Plums	Spain	965	37%	63%	3%	97%	Yes, Trade Union
Fresh Royal S.I	La Jarilla	2	Grower	Plums	Spain	3,327	46%	54%	2%	98%	Yes, Trade Union
Guimera Select Fruits SI	Guimera Select Fruits SI	1	Grower/Packer	Apricots, Cherries, Nectarines, Peaches, Plums	Spain	195	38%	62%	10%	90%	Yes, Trade Union
Conservas Jarcha SI	Conservas Jarcha SI	1	Grower/Packer	Apricots, Cherries, Nectarines, Peaches, Plums	Spain	16	62.5%	37.5%	94%	6%	Yes, worker committee
A Hinge & Sons Ltd	Ham Green Farm	2	Grower	Apricots, Cherries, Plums	United Kingdom	34	56%	44%	12%	88%	No
John Myatt & Co	Decoy Farm	2	Grower	Cherries, Plums	United Kingdom	189	60%	40%	5%	95%	No
Lower Hope	Lower Hope	1	Grower	Cherries	United Kingdom	263	54%	46%	4%	96%	No
Mockbeggar (Packing Myatt And Noke Street)	Mockbeggar Packing Ltd	1	Packer	Apricots, Cherries, Plums	United Kingdom	34	50%	50%	12%	88%	No
R. Todd & Co (Blacketyside Farm)	R. Todd & Co (Blacketyside Farm)	1	Grower/Packer	Cherries	United Kingdom	255	50%	50%	2%	98%	No
W B Chambers & Son (Tim Chambers)	Oakdane Farm	1	Grower/Packer	Cherries	United Kingdom	1,224	59%	41%	15%	85%	No
Peake Fruit	Boxford Suffockl Farms	1	Grower/Packer	Cherries	United Kingdom	250	48%	52%	12%	88%	Yes, Trade Union
Dole Services	Dole Services	1	Packhouse	N/A	United Kingdom	129	58%	42%	70%	30%	Yes, worker committee
Gaskains Ltd	Norham Farm	1	Grower/Packer	Plums	United Kingdom	384	60%	40%	53%	47%	Yes, worker committee



# Top Fruit

Supplier Name	Site Name	Tier	Site Type (Factory/Farm/ Packaging/Feed/Vessel)	Products Supplied	Country	Total Worker Number	% Male Identifying Workers	% Female Identifying Workers	% Permanent Workers	% Agency/ Temporary Workers	Presence of Trade Union and/or worker committee
Fresh Fruit Service Europe b.v.	Douce-Ools LV	2	Grower	Apples, Pears	Belgium	26	69%	31%	0%	100%	No
Fresh Fruit Service Europe b.v.	Gino Jacques	2	Grower	Apples, Pears	Belgium	30	53%	47%	0%	100%	No
Fresh Fruit Service Europe b.v.	Treunen	2	Grower	Apples, Pears	Belgium	22	68%	32%	0%	100%	No
Fresh Fruit Service Europe b.v.	Jadoul	2	Grower	Apples, Pears	Belgium	20	60%	40%	0%	100%	No
Fresh Fruit Service Europe b.v.	Achiel Ryckaert	2	Grower	Apples, Pears	Belgium	35	69%	31%	0%	100%	No
Fresh Fruit Service Europe b.v.	Tania van de Velde	2	Grower	Apples, Pears	Belgium	36	67%	33%	0%	100%	No
Fresh Fruit Service Europe b.v.	Benelux Fruit Service	2	Packer	Apples, Pears	Belgium	21	38%	62%	0%	100%	No
BP Fruitcraft Ltd	Mac Queen Fruit	2	Grower	Apples, Pears	Belgium	59	53%	47%	7%	93%	Yes, Trade Union
BP Fruitcraft Ltd	Van Haelst Fruit	2	Grower	Apples, Pears	Belgium	139	55%	38%	1%	99%	Yes, Trade Union
BP Fruitcraft Ltd	Libert Dominique	2	Grower/Packer	Apples, Pears	Belgium	44	68%	32%	20%	80%	Yes, worker committee
Agropecuria Schio Ltda	Agropecuria Schio Ltda	2	Packhouse/Grower	Apples	Brazil	4,254	79%	21%	32%	68%	Yes, Trade Union
Dole Chile	Sociedad Agrícola El Piden Ltda.	3+	Grower	Apples	Chile	82	41%	59%	33%	67%	No
Dole Chile	Agrícola Y Frutícola La Esperanza S	3+	Grower	Apples	Chile	64	66%	34%	39%	61%	No
Dole Chile	Agro Comercial Victor Copello Miranda Ltda	3+	Grower	Apples	Chile	17	71%	29%	12%	88%	No
Dole Chile	Maria Ruby Silva Muñoz	3+	Grower	Apples	Chile	24	54%	46%	17%	83%	No
Dole Chile	Agrícola Nehuentue Limitada	3+	Grower	Apples	Chile	65	95%	5%	28%	72%	No
Dole Chile	Agrícola El Mandarino Ltda.	3+	Grower	Apples	Chile	34	47%	53%	21%	79%	No
Dole Chile	Vega Fernandez Oscar Enrique	3+	Grower	Apples	Chile	66	39%	61%	27%	73%	No
Dole Chile	Agrícola Mayol Calvo Ltda.	3+	Grower	Apples	Chile	163	74%	26%	8%	92%	No
Dole Chile	Gaston Palma Valdovinos	3+	Grower	Apples	Chile	105	90%	10%	24%	76%	No
Dole Chile	Agrícola La Ballica Limitada	3+	Grower	Apples	Chile	25	56%	44%	16%	84%	No
Dole Chile	Agrícola Beco Limitada	3+	Grower	Apples	Chile	72	58%	42%	31%	69%	No
Dole Chile	Vitivinicola La Ladera Ltda.	3+	Grower	Apples	Chile	68	50%	50%	34%	66%	No
Dole Chile	Santa Isabel Sociedad Agrícola Ltda	3+	Grower	Apples	Chile	27	70%	30%	15%	85%	No
Dole Chile	Victor Hugo Solis Zamorano	3+	Grower	Apples	Chile	75	57%	43%	19%	81%	No
Dole Chile	Inversiones Casas De Santa Marta Ltda	3+	Grower	Apples	Chile	64	50%	50%	6%	94%	No
Dole Chile	Soc. Agrícola San Patricio Ltda.	3+	Grower	Apples	Chile	23	74%	26%	13%	87%	No
Dole Chile	Miller Alejandro Fuentes Salgado	3+	Grower	Apples	Chile	39	56%	44%	36%	64%	No
Dole Chile	Sgb Spa	3+	Grower	Apples	Chile	42	60%	40%	40%	60%	No
Dole Chile	Agrícola "Fc" Y Compañía	3+	Grower	Apples	Chile	67	57%	43%	48%	52%	No
Dole Chile	Rfg Spa	3+	Grower	Apples	Chile	51	61%	39%	4%	96%	No
Dole Chile	Jorge Mario Gutierrez Morales	3+	Grower	Apples	Chile	26	65%	35%	15%	85%	No
Dole Chile	Agrícola Todos Santos Limitada	3+	Grower	Apples	Chile	110	71%	29%	23%	77%	No
Dole Chile	Maria Adriana Lozano Ramirez	3+	Grower	Apples	Chile	40	80%	20%	15%	85%	No
Dole Chile	Agrícola Las Encinas De Buena Paz	3+	Grower	Apples	Chile	97	51%	49%	18%	82%	No
Dole Chile	Agrícola Moqui Limitada	3+	Grower	Apples	Chile	60	58%	42%	17%	83%	No
Dole Chile	Agrícola Quiñipeumo Limitada	3+	Grower	Apples	Chile	59	59%	41%	15%	85%	No
Dole Chile	Agrícola Puipuyen S.a.	3+	Grower	Apples	Chile	36	50%	50%	67%	33%	No
Dole Chile	Sociedad Agrícola Millahue Limitada	3+	Grower	Apples	Chile	38	66%	34%	24%	76%	No
Dole Chile	Silos De Romeral S.a.	3+	Grower	Apples	Chile	571	76%	24%	27%	73%	No
Dole Chile	Agrícola Allipen Teno Limitada	3+	Grower	Apples	Chile	521	90%	10%	2%	98%	No

## Beyond Tier 1 Delivering Transparency in High-Risk Supply Chains: Top & Stone Fruit



Supplier Name	Site Name	Tier	Site Type (Factory/Farm/ Packaging/Feed/Vessel)	Products Supplied	Country	Total Worker Number	% Male Identifying Workers	% Female Identifying Workers	% Permanent Workers	% Agency/ Temporary Workers	Presence of Trade Union and/or worker committee
Dole Chile	Agricola Lc Ltda.	3+	Grower	Apples	Chile	120	71%	29%	17%	83%	No
Dole Chile	Agricola Caren Teno Limitada	3+	Grower	Apples	Chile	24	42%	58%	100%	0%	No
Dole Chile	Agricola Sandurr Limitada	3+	Grower	Apples	Chile	110	27%	73%	73%	27%	No
Frutera San Fernando SA	Comercial Agrícola Pirineos Ltda - N 3 Parcela 13	3+	Grower	Apples	Chile	10	60%	40%	20%	80%	No
Frutera San Fernando SA	Sociedad Agrícola El Porvenir Sa	3+	Grower	Apples	Chile	20	50%	50%	15%	85%	No
Dole Chile	Dole Chile Sa - Planta Lontue	2	Packhouse	Apples	Chile	381	42%	58%	8%	92%	Yes, Trade Union
Dole Chile	Dole Chile Sa - San Fernando	2	Packhouse	Apples	Chile	717	41%	59%	7%	93%	Yes, Trade Union
Dole Chile	Dole Chile Sa - Huerto Santa Elena	3+	Grower	Apples	Chile	161	57%	43%	7%	93%	Yes, Trade Union
Dole Chile	Dole Chile Sa - La Cana	3+	Grower	Apples	Chile	657	70%	30%	1%	99%	Yes, Trade Union
Dole Chile	Dole Chile Sa - Santa Matilde	3+	Grower	Apples	Chile	127	46%	54%	6%	94%	Yes, Trade Union
Dole Chile	Dole Chile Sa - Porvenir	3+	Grower	Apples	Chile	85	53%	47%	6%	94%	Yes, Trade Union
Dole Chile	Agricola La Trapa S.a.	3+	Grower	Apples	Chile	112	48%	52%	16%	84%	Yes, Trade Union
Frutera San Fernando SA	Frutera San Fernando SA	2	Packhouse/Grower	Apples	Chile	736	48%	52%	21%	79%	Yes, worker committee
Frutera San Fernando SA	Frusan Angol	2	Packhouse	Apples	Chile	475	33%	67%	8%	92%	Yes, worker committee
Frutera San Fernando SA	Frusan Freire	2	Packhouse	Apples	Chile	851	39%	61%	6%	94%	Yes, worker committee
Frutera San Fernando SA	Sociedad Agrícola Puente Negro Ltda Packing Santa Rita	2	Packhouse	Apples	Chile	124	34%	66%	22%	78%	Yes, worker committee
Frutera San Fernando SA	Tambofrut Ltda Packing La Palma	2	Packhouse/Grower	Apples	Chile	8	62.5%	37.5%	12.5%	87.5%	Yes, worker committee
Frutera San Fernando SA	Agricola Alto Traiguén S A	3+	Grower	Apples	Chile	110	64%	36%	14%	86%	Yes, worker committee
Frutera San Fernando SA	Agricola Carrizal Ltda -3	3+	Grower	Apples	Chile	16	69%	31%	25%	75%	Yes, worker committee
Frutera San Fernando SA	Agricola Century Ltda	3+	Grower	Apples	Chile	8	50%	50%	25%	75%	Yes, worker committee
Frutera San Fernando SA	Agricola Claro De Luna Spa (Santa Alejandra)	3+	Grower	Apples	Chile	29	62%	38%	14%	86%	Yes, worker committee
Frutera San Fernando SA	Agricola El Rincon Ltda	3+	Grower	Apples	Chile	28	64%	36%	14%	86%	Yes, worker committee
Frutera San Fernando SA	Agricola Forli Limitada	3+	Grower	Apples	Chile	50	66%	34%	20%	80%	Yes, worker committee
Frutera San Fernando SA	Agricola Fruticola Y Ganadera Curi Caven Ltda	3+	Grower	Apples	Chile	30	77%	23%	30%	70%	Yes, worker committee
Frutera San Fernando SA	Agricola Ganadera Y Forestal El Peumo Limitada	3+	Grower	Apples	Chile	26	58%	42%	85%	15%	Yes, worker committee
Frutera San Fernando SA	Agricola Joaquin Arraztio Echecolanea Y Cia Ltda - El Rincon	3+	Grower	Apples	Chile	34	59%	41%	12%	88%	Yes, worker committee
Frutera San Fernando SA	Agricola Joaquin Arraztio Echecolanea Y Cia Ltda - Santa Elvira	3+	Grower	Apples	Chile	55	60%	40%	18%	82%	Yes, worker committee
Frutera San Fernando SA	Agricola La Ballica Ltda - La Marinana	3+	Grower	Apples	Chile	17	76%	24%	29%	71%	Yes, worker committee
Frutera San Fernando SA	Agricola La Ballica Ltda - Talcarehue	3+	Grower	Apples	Chile	35	63%	37%	9%	91%	Yes, worker committee
Frutera San Fernando SA	Agricola La Cumbre Limitada	3+	Grower	Apples	Chile	18	61%	39%	22%	78%	Yes, worker committee
Frutera San Fernando SA	Agricola La Obra Ltda	3+	Grower	Apples	Chile	18	67%	33%	17%	83%	Yes, worker committee
Frutera San Fernando SA	Agricola Los Boldos De Manzanache Limitada	3+	Grower	Apples	Chile	22	55%	45%	14%	86%	Yes, worker committee
Frutera San Fernando SA	Agricola Los Campos 1	3+	Grower	Apples	Chile	78	56%	44%	3%	97%	Yes, worker committee
Frutera San Fernando SA	Agricola Los Campos Sa 2	3+	Grower	Apples	Chile	65	60%	40%	3%	97%	Yes, worker committee
Frutera San Fernando SA	Agricola Mar Rojo Sa	3+	Grower	Apples	Chile	120	62.5%	37.5%	4%	96%	Yes, worker committee
Frutera San Fernando SA	Agricola Olivia Del Huique S A	3+	Grower	Apples	Chile	45	60%	40%	11%	89%	Yes, worker committee
Frutera San Fernando SA	Agricola Piemonte Ltda - Santa Olga	3+	Grower	Apples	Chile	62	56%	44%	6%	94%	Yes, worker committee
Frutera San Fernando SA	Agricola Piemonte Ltda Polonia	3+	Grower	Apples	Chile	78	60%	40%	4%	96%	Yes, worker committee
Frutera San Fernando SA	Agricola Retiro Ltda - La Patagua	3+	Grower	Apples	Chile	31	61%	39%	23%	77%	Yes, worker committee

Data correct as of March 2023



# Beyond Tier 1 Delivering Transparency in High-Risk Supply Chains: Top & Stone Fruit



Supplier Name	Site Name	Tier	Site Type (Factory/Farm/ Packaging/Feed/Vessel)	Products Supplied	Country	Total Worker Number	% Male Identifying Workers	% Female Identifying Workers	% Permanent Workers	% Agency/ Temporary Workers	Presence of Trade Union and/or worker committee
Frutera San Fernando SA	Agricola San Camilo Ltda 1	3+	Grower	Apples	Chile	25	56%	44%	24%	76%	Yes, worker committee
Frutera San Fernando SA	Agricola San Camilo Ltda 2	3+	Grower	Apples	Chile	62	56%	44%	3%	97%	Yes, worker committee
Frutera San Fernando SA	Agricola Santa Elba Ltda - San Rafael	3+	Grower	Apples	Chile	18	61%	39%	17%	83%	Yes, worker committee
Frutera San Fernando SA	Agricola Sur Ltda - El Vergel	3+	Grower	Apples	Chile	70	56%	44%	3%	97%	Yes, worker committee
Frutera San Fernando SA	Agricola Triple A S A Fundo Renaico	3+	Grower	Apples	Chile	75	57%	43%	7%	93%	Yes, worker committee
Frutera San Fernando SA	Agricola Triple A Tijeral Sa	3+	Grower	Apples	Chile	83	57%	43%	4%	96%	Yes, worker committee
Frutera San Fernando SA	Agricola Uac Ltda	3+	Grower	Apples	Chile	18	67%	33%	6%	94%	Yes, worker committee
Frutera San Fernando SA	Agricola Y Fruticola Caren Ltda	3+	Grower	Apples	Chile	65	60%	40%	8%	92%	Yes, worker committee
Frutera San Fernando SA	Agrocamelio Ltda	3+	Grower	Apples	Chile	38	63%	37%	5%	95%	Yes, worker committee
Frutera San Fernando SA	Andes Agro Spa	3+	Grower	Apples	Chile	15	93%	7%	7%	93%	Yes, worker committee
Frutera San Fernando SA	Claudio Manuel Aranguiz - Apalta	3+	Grower	Apples	Chile	19	58%	42%	11%	89%	Yes, worker committee
Frutera San Fernando SA	Claudio Manuel Aranguiz - Olivar	3+	Grower	Apples	Chile	15	60%	40%	7%	93%	Yes, worker committee
Frutera San Fernando SA	Comercial Agrícola Pirineos Ltda - Mosqueta	3+	Grower	Apples	Chile	40	62.5%	37.5%	12.5%	87.5%	Yes, worker committee
Frutera San Fernando SA	Comercial Agrícola Pirineos Ltda - N 3 Parcela 9	3+	Grower	Apples	Chile	20	50%	50%	15%	85%	Yes, worker committee
Frutera San Fernando SA	Comercial Agrícola Pirineos Ltda - Santa Lucia	3+	Grower	Apples	Chile	27	52%	48%	11%	89%	Yes, worker committee
Frutera San Fernando SA	Comercial Agrícola Pirineos Ltda - Sta Teresa P17-19	3+	Grower	Apples	Chile	24	62.5%	37.5%	21%	79%	Yes, worker committee
Frutera San Fernando SA	Comercial Agrícola Pirineos Ltda - Sta Teresa P4	3+	Grower	Apples	Chile	103	56%	44%	15%	85%	Yes, worker committee
Frutera San Fernando SA	Emilio Fernandez Ferreras	3+	Grower	Apples	Chile	85	69%	31%	4%	96%	Yes, worker committee
Frutera San Fernando SA	Empresa Frutera Taulemu Ltda	3+	Grower	Apples	Chile	21	76%	24%	10%	90%	Yes, worker committee
Frutera San Fernando SA	Erwin Balzer Winner / Agrícola Chamiza Spa	3+	Grower	Apples	Chile	14	64%	36%	14%	86%	Yes, worker committee
Frutera San Fernando SA	Fruticola Saba Spa	3+	Grower	Apples	Chile	50	58%	42%	6%	94%	Yes, worker committee
Frutera San Fernando SA	Inversiones Las Penas Ltda	3+	Grower	Apples	Chile	43	63%	37%	7%	93%	Yes, worker committee
Frutera San Fernando SA	Inversiones Regis Limitada El Tambo	3+	Grower	Apples	Chile	19	58%	42%	11%	89%	Yes, worker committee
Frutera San Fernando SA	Inversiones Regis Limitada Ensenada	3+	Grower	Apples	Chile	24	71%	29%	8%	92%	Yes, worker committee
Frutera San Fernando SA	Invertec Agrícola Rengo Ltda	3+	Grower	Apples	Chile	60	63%	37%	7%	93%	Yes, worker committee
Frutera San Fernando SA	Invertec Agrofood S A Colbun	3+	Grower	Apples	Chile	62	58%	42%	3%	97%	Yes, worker committee
Frutera San Fernando SA	Invertec Agrofood S A Coltauco	3+	Grower	Apples	Chile	47	55%	45%	4%	96%	Yes, worker committee
Frutera San Fernando SA	Invertec Agrofood S A Los Lirios	3+	Grower	Apples	Chile	60	60%	40%	3%	97%	Yes, worker committee
Frutera San Fernando SA	Invertec Agrofood S A Santa Maria	3+	Grower	Apples	Chile	22	59%	41%	9%	91%	Yes, worker committee
Frutera San Fernando SA	Jose Manuel Correa Valdes - Santa Teresa	3+	Grower	Apples	Chile	10	60%	40%	10%	90%	Yes, worker committee
Frutera San Fernando SA	Mario Correa Valdes - Santa Teresa	3+	Grower	Apples	Chile	18	56%	44%	11%	89%	Yes, worker committee
Frutera San Fernando SA	Olga Elena Cruz Alemparte	3+	Grower	Apples	Chile	50	58%	42%	4%	96%	Yes, worker committee
Frutera San Fernando SA	Patricio Antonio Phillips Saenz	3+	Grower	Apples	Chile	41	71%	29%	5%	95%	Yes, worker committee
Frutera San Fernando SA	Paulina Andrea Solis Banda	3+	Grower	Apples	Chile	20	55%	45%	10%	90%	Yes, worker committee
Frutera San Fernando SA	Pedro Hoffmann Leon	3+	Grower	Apples	Chile	15	73%	27%	13%	87%	Yes, worker committee
Frutera San Fernando SA	Soc Agr Y Transp El Triangulo Ltda - Santa Ines	3+	Grower	Apples	Chile	27	63%	37%	7%	93%	Yes, worker committee
Frutera San Fernando SA	Soc Agric Horacio Dagnino Ltda	3+	Grower	Apples	Chile	15	67%	33%	13%	87%	Yes, worker committee
Frutera San Fernando SA	Soc Agric Puente Negro Ltda	3+	Grower	Apples	Chile	65	62%	38%	3%	97%	Yes, worker committee
Frutera San Fernando SA	Soc Agrícola El Tesoro 1 Ltda	3+	Grower	Apples	Chile	58	64%	36%	5%	95%	Yes, worker committee
Frutera San Fernando SA	Soc Agrícola El Tesoro Ltda - 2	3+	Grower	Apples	Chile	88	65%	35%	3%	97%	Yes, worker committee
Frutera San Fernando SA	Soc Agrícola La Selva Ltda	3+	Grower	Apples	Chile	115	60%	40%	2%	98%	Yes, worker committee

Data correct as of March 2023

Supplier Name	Site Name	Tier	Site Type (Factory/Farm/ Packaging/Feed/Vessel)	Products Supplied	Country	Total Worker Number	% Male Identifying Workers	% Female Identifying Workers	% Permanent Workers	% Agency/ Temporary Workers	Presence of Trade Union and/or worker committee
Frutera San Fernando SA	Soc Agricola Y Ganadera Los Quillayes Ltda	3+	Grower	Apples	Chile	7	71%	29%	14%	86%	Yes, worker committee
Frutera San Fernando SA	Soc Agricola Y Ganadera San Juan Limitada - Tres Montes	3+	Grower	Apples	Chile	7	86%	14%	14%	86%	Yes, worker committee
Frutera San Fernando SA	Soc Fruticola Santa Aida Ltda	3+	Grower	Apples	Chile	11	73%	27%	9%	91%	Yes, worker committee
Frutera San Fernando SA	Sociedad Agricola Kaulen Ltda	3+	Grower	Apples	Chile	47	77%	23%	4%	96%	Yes, worker committee
Frutera San Fernando SA	Sociedad Agricola Maquena Spa - San Lorenzo	3+	Grower	Apples	Chile	30	60%	40%	17%	83%	Yes, worker committee
Frutera San Fernando SA	Sociedad Agricola Maquena Spa - Santa Luisa Km5	3+	Grower	Apples	Chile	15	60%	40%	20%	80%	Yes, worker committee
Frutera San Fernando SA	Sociedad Agricola Rio Penitente Ltda	3+	Grower	Apples	Chile	116	60%	40%	3%	97%	Yes, worker committee
Frutera San Fernando SA	Sociedad Agricola Y Comercial Luis Parraguez G E Hijos Cia Ltda - 1	3+	Grower	Apples	Chile	15	60%	40%	20%	80%	Yes, worker committee
Frutera San Fernando SA	Sociedad Agricola Y Comercial Luis Parraguez G E Hijos Cia Ltda - 2	3+	Grower	Apples	Chile	25	60%	40%	12%	88%	Yes, worker committee
Frutera San Fernando SA	Sociedad Agricola Y Transportes El Triangulo Ltda (San Sebastian)	3+	Grower	Apples	Chile	22	59%	41%	18%	82%	Yes, worker committee
Frutera San Fernando SA	Suc Claudio Enrique Mahuzier Manriquez	3+	Grower	Apples	Chile	31	65%	35%	10%	90%	Yes, worker committee
Frutera San Fernando SA	Suc Sergio Valenzuela - Miraflores	3+	Grower	Apples	Chile	9	67%	33%	22%	78%	Yes, worker committee
Frutera San Fernando SA	Sucesion Jose Calderon Cornejo	3+	Grower	Apples	Chile	10	50%	50%	20%	80%	Yes, worker committee
Frutera San Fernando SA	Tambofrut Huerto La Vega - El Vergel- Valle Hermoso - San Luis	3+	Grower	Apples	Chile	109	55%	45%	8%	92%	Yes, worker committee
Frutera San Fernando SA	Terrasur Agro Spa Quine	3+	Grower	Apples	Chile	64	64%	36%	6%	94%	Yes, worker committee
Frutera San Fernando SA	TF / Ensenada	3+	Grower	Apples	Chile	44	55%	45%	9%	91%	Yes, worker committee
Frutera San Fernando SA	TF / La Palma	3+	Grower	Apples	Chile	8	62.5%	37.5%	12.5%	87.5%	Yes, worker committee
Frutera San Fernando SA	TF / Malloa	3+	Grower	Apples	Chile	68	55%	45%	6%	94%	Yes, worker committee
Frutera San Fernando SA	TF / Rinconada	3+	Grower	Apples	Chile	52	69%	31%	13%	87%	Yes, worker committee
Frutera San Fernando SA	Victor Hugo Solis Zamorano	3+	Grower	Apples	Chile	21	67%	33%	10%	90%	Yes, worker committee
Frutera San Fernando SA	Vitivinicola La Ladera Ltda	3+	Grower	Apples	Chile	17	65%	35%	12%	88%	Yes, worker committee
Blue Whale	Les Deux Vallees	2	Packhouse	Apples	France	105	48%	52%	30%	70%	No
Blue Whale	Trois Domaines	3+	Packhouse	Apples	France	92	21%	79%	50%	50%	No
Blue Whale	Jadana	2	Packhouse	Apples	France	31	42%	58%	52%	48%	No
Blue Whale	Scea Du Domaine St Georges	2	Packhouse/Grower	Apples	France	1,624	54%	46%	14%	86%	No
Blue Whale	Provence Comtat	2	Packhouse	Apples	France	148	37%	63%	22%	78%	No
Blue Whale	Vergers De La Courtoise	2	Packhouse/Grower	Apples	France	59	41%	59%	51%	49%	No
Blue Whale	Novacoop	2	Packhouse	Apples	France	76	32%	68%	47%	53%	No
Blue Whale	Vergers D'anjou	1	Packhouse/Grower	Apples	France	173	62%	38%	43%	57%	No
Blue Whale	Martinoise	2	Packhouse/Grower	Apples	France	68	35%	65%	25%	75%	No
Cardell Export	Sa Guedj	2	Packhouse/Grower	Apples	France	30	63%	37%	100%	0%	No
Cardell Export	Sica Sevre Gatine Sarl	2	Packhouse	Apples	France	330	50%	50%	28%	72%	No
Cardell Export	Laurent Burgevin	3+	Grower	Apples	France	16	0%	100%	0%	100%	No
Cardell Export	Vergers De La Haie	3+	Grower	Apples	France	15	0%	100%	0%	100%	No
Cardell Export	Earl Vergers De Bichas	3+	Grower	Apples	France	12	0%	100%	0%	100%	No
Cardell Export	Earl Vergers Bertaud	3+	Grower	Apples	France	17	6%	94%	6%	94%	No
Cardell Export	Earl Vergers Cottineau	3+	Grower	Apples	France	23	96%	4%	4%	96%	No
Cardell Export	Earl Vergers De Lasnerie	3+	Grower	Apples	France	21	29%	71%	5%	95%	No
Cardell Export	Gaec Fruits Rouges	3+	Grower	Apples	France	20	50%	50%	0%	100%	No

# Beyond Tier 1 Delivering Transparency in High-Risk Supply Chains: Top & Stone Fruit



Supplier Name	Site Name	Tier	Site Type (Factory/Farm/ Packaging/Feed/Vessel)	Products Supplied	Country	Total Worker Number	% Male Identifying Workers	% Female Identifying Workers	% Permanent Workers	% Agency/ Temporary Workers	Presence of Trade Union and/or worker committee
Cardell Export	Gaec Le Louet	3+	Grower	Apples	France	26	77%	23%	4%	96%	No
Cardell Export	Gaec Morille - Luneau	3+	Grower	Apples	France	24	67%	33%	8%	92%	No
Cardell Export	Gaec Vergers Du Bouillonnois	3+	Grower	Apples	France	22	36%	64%	9%	91%	No
Cardell Export	Scea Serveau Soyer	3+	Grower	Apples	France	7	0%	100%	0%	100%	No
Cardell Export	Scea Vergers Des Roussières	3+	Grower	Apples	France	35	40%	89%	14%	86%	No
Blue Whale	Cooperative Des Deux Valles - Moissac	2	Packhouse	Apples	France	51	43%	57%	49%	51%	Yes, Trade Union
Blue Whale	Stanor	2	Packhouse	Apples	France	160	31%	69%	49%	51%	Yes, Trade Union
Blue Whale	Terryloire	1	Packhouse	Apples	France	56	29%	71%	54%	46%	Yes, Trade Union
Cardell Export	Domaine De Caderache	3+	Grower	Apples	France	22	64%	36%	14%	86%	Yes, Trade Union
Cardell Export	Domaine De Confoux	2	Packhouse/Grower	Apples	France	40	88%	13%	28%	73%	Yes, Trade Union
Cardell Export	Pascal Cholet	3+	Grower	Apples	France	1	100%	0%	100%	0%	Yes, Trade Union
Cardell Export	La Baronnerie	3+	Grower	Apples	France	25	100%	0%	0%	100%	Yes, Trade Union
Cardell Export	Sica De Marsillargues	2	Packhouse/Grower	Apples	France	38	37%	63%	55%	45%	Yes, worker committee
Groda Agf B.v.	Andreas Blaser	2	Grower	Apples	Germany	55	73%	27%	0%	100%	No
Freshmax Exports Limited	Freshmax Exports Limited	2	Grower	Apples, Pears	New Zealand	6	50%	50%	100%	0%	No
Freshmax Exports Limited	Crasborn Fresh Harvest Ltd	2	Packhouse	Apples, Pears	New Zealand	294	55%	45%	0%	100%	No
Mr Apple New Zealand Limited	Tyrella Orchards Ltd	2	Packhouse/Grower	Apples	New Zealand	119	70%	30%	16%	84%	No
Mr Apple New Zealand Limited	Dominion Point Partnership	3+	Grower	Apples	New Zealand	18	61%	39%	11%	89%	No
The Fresh Fruit Company	The Fresh Fruit Company	2	Packhouse/Grower	Apples	New Zealand	20	40%	60%	100%	0%	No
The Fresh Fruit Company	Freshco Nelson	2	Packhouse	Apples	New Zealand	77	52%	48%	9%	91%	No
The Fresh Fruit Company	Freshco Whakatu Frupak	2	Packhouse	Apples	New Zealand	280	50%	50%	7%	93%	No
The Fresh Fruit Company	Hoddys Fruit Co Ltd	2	Packhouse/Grower	Apples	New Zealand	68	37%	63%	32%	68%	No
The Fresh Fruit Company	Kelston Orchards	2	Packhouse/Grower	Apples	New Zealand	213	67%	33%	8%	92%	No
The Fresh Fruit Company	Mt Erin Ltd	2	Packhouse	Apples	New Zealand	61	43%	57%	10%	90%	No
The Fresh Fruit Company	Thomas Bros Ltd	2	Packhouse/Grower	Apples	New Zealand	69	35%	65%	13%	87%	No
The Fresh Fruit Company	Tyrella Orchards Ltd	2	Packhouse/Grower	Apples	New Zealand	119	70%	30%	16%	84%	No
The Fresh Fruit Company	Dominion Point Partnership	3+	Grower	Apples	New Zealand	18	61%	39%	11%	89%	No
The Fresh Fruit Company	K & F Mclean	2	Packhouse/Grower	Apples	New Zealand	275	69%	31%	20%	80%	Yes, Trade Union
Mr Apple New Zealand Limited	Blyth Orchard	3+	Grower	Apples	New Zealand	115	95%	5%	17%	83%	Yes, worker committee
Mr Apple New Zealand Limited	South Pacific Growers Limited	3+	Grower	Apples	New Zealand	20	60%	40%	45%	55%	Yes, worker committee
Mr Apple New Zealand Limited	Irrigation Services Orchards Ltd	3+	Grower	Apples	New Zealand	72	93%	7%	10%	90%	Yes, worker committee
Mr Apple New Zealand Limited	Montrose Orchard Ltd	3+	Grower	Apples	New Zealand	9	67%	33%	22%	78%	Yes, worker committee
Mr Apple New Zealand Limited	Williams Fruit Company	3+	Grower	Apples	New Zealand	15	93%	7%	20%	80%	Yes, worker committee
Mr Apple New Zealand Limited	Marett Horticulture Ltd	3+	Grower	Apples	New Zealand	8	62.5%	37.5%	37.5%	62.5%	Yes, worker committee
Mr Apple New Zealand Limited	Bj Wattie Orchard	3+	Grower	Apples	New Zealand	19	89%	11%	5%	95%	Yes, worker committee
Mr Apple New Zealand Limited	Sunpeach Orchards	3+	Grower	Apples	New Zealand	19	100%	0%	26%	74%	Yes, worker committee
Mr Apple New Zealand Limited	Agnew Horticulture Ltd	3+	Grower	Apples	New Zealand	38	92%	8%	13%	87%	Yes, worker committee
Mr Apple New Zealand Limited	Kingsmead Orchard - Hone Partnership	3+	Grower	Apples	New Zealand	7	100%	0%	29%	71%	Yes, worker committee
Mr Apple New Zealand Limited	Rutherglen Orchard	3+	Grower	Apples	New Zealand	22	100%	0%	23%	77%	Yes, worker committee
Mr Apple New Zealand Limited	Mcfetridge Holdings Ltd	3+	Grower	Apples	New Zealand	25	100%	0%	12%	88%	Yes, worker committee
Mr Apple New Zealand Limited	Wicken Partnership	3+	Grower	Apples	New Zealand	11	100%	0%	9%	91%	Yes, worker committee
Mr Apple New Zealand Limited	Team Work Hawkes Bay Ltd	3+	Grower	Apples	New Zealand	11	91%	9%	27%	73%	Yes, worker committee
Mr Apple New Zealand Limited	Te Mata Orchards Ltd	3+	Grower	Apples	New Zealand	15	67%	33%	47%	53%	Yes, worker committee
Mr Apple New Zealand Limited	Whakatu Packhouse	2	Packhouse	Apples	New Zealand	212	57%	43%	7%	93%	Yes, worker committee

Data correct as of March 2023

# Beyond Tier 1 Delivering Transparency in High-Risk Supply Chains: Top & Stone Fruit



Supplier Name	Site Name	Tier	Site Type (Factory/Farm/ Packaging/Feed/Vessel)	Products Supplied	Country	Total Worker Number	% Male Identifying Workers	% Female Identifying Workers	% Permanent Workers	% Agency/ Temporary Workers	Presence of Trade Union and/or worker committee
Mr Apple New Zealand Limited	Te Papa Orchard	3+	Grower	Apples	New Zealand	130	89%	11%	14%	86%	Yes, worker committee
Mr Apple New Zealand Limited	Cederman Brothers Ltd	2	Packhouse/Grower	Apples	New Zealand	132	79%	21%	14%	86%	Yes, worker committee
Mr Apple New Zealand Limited	Meeanee Orchard	3+	Grower	Apples	New Zealand	101	99%	1%	15%	85%	Yes, worker committee
Mr Apple New Zealand Limited	Pilos Orchard	3+	Grower	Apples	New Zealand	94	95%	5%	18%	82%	Yes, worker committee
Mr Apple New Zealand Limited	Pacific Orchard	3+	Grower	Apples	New Zealand	81	89%	11%	17%	83%	Yes, worker committee
Mr Apple New Zealand Limited	Clive Orchard	3+	Grower	Apples	New Zealand	60	95%	5%	22%	78%	Yes, worker committee
Mr Apple New Zealand Limited	Waipawa Packhouse	2	Packhouse	Apples	New Zealand	178	59%	41%	8%	92%	Yes, worker committee
Mr Apple New Zealand Limited	Scotland Orchard	3+	Grower	Apples	New Zealand	55	93%	7%	16%	84%	Yes, worker committee
Mr Apple New Zealand Limited	Rangihau Orchard	3+	Grower	Apples	New Zealand	118	97%	3%	13%	87%	Yes, worker committee
Mr Apple New Zealand Limited	Kinross Orchard	3+	Grower	Apples	New Zealand	84	95%	5%	15%	85%	Yes, worker committee
Mr Apple New Zealand Limited	Brookfield Orchard	3+	Grower	Apples	New Zealand	94	94%	6%	19%	81%	Yes, worker committee
Mr Apple New Zealand Limited	Close Orchard	3+	Grower	Apples	New Zealand	87	91%	9%	24%	76%	Yes, worker committee
Mr Apple New Zealand Limited	Kanuka Orchard	3+	Grower	Apples	New Zealand	62	92%	8%	13%	87%	Yes, worker committee
Mr Apple New Zealand Limited	Pakowhai Orchard	3+	Grower	Apples	New Zealand	47	91%	9%	28%	72%	Yes, worker committee
Mr Apple New Zealand Limited	Sorrento	3+	Grower	Apples	New Zealand	57	89%	11%	18%	82%	Yes, worker committee
Mr Apple New Zealand Limited	Longlands Packhouse	2	Packhouse	Apples	New Zealand	212	55%	45%	8%	92%	Yes, worker committee
Fruitways Marketing Pty Ltd	Welgedacht	2	Grower	Apples	South Africa	15	87%	13%	33%	67%	No
Fruitways Marketing Pty Ltd	Villiersdorp Boeredienste Bk	2	Grower	Apples	South Africa	10	80%	20%	60%	40%	No
Fruitways Marketing Pty Ltd	Ratelfontein Boerdery	2	Grower	Apples	South Africa	20	70%	30%	40%	60%	No
Fruitways Marketing Pty Ltd	Tiekasfontein Boerdery Trust	2	Grower	Apples	South Africa	19	79%	21%	58%	42%	No
Fruitways Marketing Pty Ltd	Nuta Landgoed	2	Grower	Apples, Pears	South Africa	50	42%	58%	20%	80%	No
Fruitways Marketing Pty Ltd	Pearly Gates	2	Grower	Apples, Pears	South Africa	21	100%	0%	29%	71%	No
Fruitways Marketing Pty Ltd	Errigal	2	Grower	Apples, Pears	South Africa	33	70%	30%	58%	42%	No
Fruitways Marketing Pty Ltd	Brookelands	2	Grower	Apples, Pears	South Africa	10	90%	10%	60%	40%	No
Tru-Cape Fruit Marketing (Pty) Ltd	Bellcro Farming (Pty) Ltd	3+	Grower	Apples, Pears	South Africa	38	76%	24%	29%	71%	No
Tru-Cape Fruit Marketing (Pty) Ltd	La Brune Fruit	3+	Grower	Apples, Pears	South Africa	16	94%	6%	6%	94%	No
Tru-Cape Fruit Marketing (Pty) Ltd	Sh Van Der Horst Company (Pty) Ltd	3+	Grower	Apples, Pears	South Africa	60	75%	25%	25%	75%	No
Fruitways Marketing Pty Ltd	Melpack	2	Packer	Apples, Pears	South Africa	1,289	34%	66%	50%	50%	Yes, Trade Union
Fruitways Marketing Pty Ltd	Glen Elgin	2	Grower	Apples, Pears	South Africa	2,143	92%	8%	41%	59%	Yes, Trade Union
Fruitways Marketing Pty Ltd	Elgin Orchards	2	Grower	Apples, Pears	South Africa	362	86%	14%	44%	56%	Yes, Trade Union
Fruitways Marketing Pty Ltd	Baldric Farms	2	Grower	Apples, Pears	South Africa	54	50%	50%	67%	33%	Yes, Trade Union
Fruitways Marketing Pty Ltd	Theddan Farm	2	Grower	Apples, Pears	South Africa	389	77%	23%	30%	70%	Yes, Trade Union
Fruitways Marketing Pty Ltd	Chiltern Farms / Gelukstroom	2	Grower	Apples, Pears	South Africa	1,356	41%	59%	36%	64%	Yes, Trade Union
Fruitways Marketing Pty Ltd	Aulderm	2	Grower	Apples	South Africa	35	74%	26%	89%	11%	Yes, Trade Union
Fruitways Marketing Pty Ltd	Diepkloof	2	Grower	Apples	South Africa	44	66%	34%	66%	34%	Yes, Trade Union
Fruitways Marketing Pty Ltd	Helderfontein Farm Trust	2	Grower	Apples	South Africa	80	72.5%	27.5%	47.5%	52.5%	Yes, Trade Union
Fruitways Marketing Pty Ltd	I.f Vdm Du Toit - Eikeboom	2	Grower	Apples	South Africa	60	65%	35%	92%	8%	Yes, Trade Union
Fruitways Marketing Pty Ltd	Ongegund	2	Grower	Apples	South Africa	61	92%	8%	18%	82%	Yes, Trade Union
Fruitways Marketing Pty Ltd	Fruitways Packing Services (Melpack / Molteno / Valley Packers) - Phc E0389 / E0426 / E2002	2	Grower	Apples, Pears	South Africa	1,289	34%	66%	50%	50%	Yes, Trade Union
Fruitways Marketing Pty Ltd	Habibi Farm	2	Grower/Packer	Apples, Pears	South Africa	273	77%	23%	30%	70%	Yes, Trade Union
Fruitways Marketing Pty Ltd	Strathian	2	Grower	Apples, Pears	South Africa	48	75%	25%	0%	100%	Yes, Trade Union
Fruitways Marketing Pty Ltd	Rosenhof Farm	2	Grower	Apples, Pears	South Africa	68	91%	9%	88%	12%	Yes, Trade Union
Fruitways Marketing Pty Ltd	Vinceremo	2	Grower	Apples, Pears	South Africa	129	75%	25%	47%	53%	Yes, Trade Union

Data correct as of March 2023

## Beyond Tier 1 Delivering Transparency in High-Risk Supply Chains: Top & Stone Fruit



Supplier Name	Site Name	Tier	Site Type (Factory/Farm/ Packaging/Feed/Vessel)	Products Supplied	Country	Total Worker Number	% Male Identifying Workers	% Female Identifying Workers	% Permanent Workers	% Agency/ Temporary Workers	Presence of Trade Union and/or worker committee
Fruitways Marketing Pty Ltd	Sunridge	2	Grower	Apples, Pears	South Africa	64	81%	19%	31%	69%	Yes, Trade Union
Fruitways Marketing Pty Ltd	Zuiderkruis	2	Grower	Apples, Pears	South Africa	49	69%	31%	84%	16%	Yes, Trade Union
Fruitways Marketing Pty Ltd	Protea Farm	2	Grower	Apples, Pears	South Africa	23	57%	43%	87%	13%	Yes, Trade Union
Fruitways Marketing Pty Ltd	Windermere	2	Grower	Apples, Pears	South Africa	43	98%	2%	26%	74%	Yes, Trade Union
Tru-Cape Fruit Marketing (Pty) Ltd	Two A Day Group	3	Packer	Apples, Pears	South Africa	1,931	34%	66%	33%	67%	Yes, Trade Union
Tru-Cape Fruit Marketing (Pty) Ltd	Ceres Fruit Growers (Pty) Ltd	3	Grower	Apples, Pears	South Africa	1,703	35%	65%	15%	85%	Yes, Trade Union
Tru-Cape Fruit Marketing (Pty) Ltd	Agrisouth Orchards (Pty) Ltd T/A Houtveld Farm	3	Grower	Apples, Pears	South Africa	340	68%	32%	20%	80%	Yes, Trade Union
Tru-Cape Fruit Marketing (Pty) Ltd	Crookes Brothers South Africa (Pty) Ltd	2	Packhouse	Apples	South Africa	389	77%	23%	30%	70%	Yes, Trade Union
Tru-Cape Fruit Marketing (Pty) Ltd	Elands River Farming Company	3+	Grower	Apples	South Africa	52	85%	15%	23%	77%	Yes, Trade Union
Tru-Cape Fruit Marketing (Pty) Ltd	Erfkamp	3+	Grower	Apples	South Africa	178	82%	18%	27%	73%	Yes, Trade Union
Tru-Cape Fruit Marketing (Pty) Ltd	Excelsior Vrugte	3+	Grower	Apples	South Africa	128	80%	20%	66%	34%	Yes, Trade Union
Tru-Cape Fruit Marketing (Pty) Ltd	Van Niekerk Boerdery Bk	3+	Grower	Apples	South Africa	79	75%	25%	34%	66%	Yes, Trade Union
Fruitways Marketing Pty Ltd	Starking Fruit Packers (Cortina)	2	Grower	Apples	South Africa	97	77%	23%	35%	65%	Yes, worker committee
Fruitways Marketing Pty Ltd	Theeside Farm (Pty) Ltd	2	Grower	Apples	South Africa	56	84%	16%	23%	77%	Yes, worker committee
Fruitways Marketing Pty Ltd	Lorraine / Cliffords	2	Grower	Apples	South Africa	9	89%	11%	44%	56%	Yes, worker committee
Fruitways Marketing Pty Ltd	Rockhaven	2	Grower	Apples	South Africa	28	79%	21%	50%	50%	Yes, worker committee
Fruitways Marketing Pty Ltd	Lingenfelder Broers	2	Grower	Apples	South Africa	65	77%	23%	83%	17%	Yes, worker committee
Fruitways Marketing Pty Ltd	Chanjaroux	2	Grower	Apples	South Africa	19	84%	16%	100%	0%	Yes, worker committee
Fruitways Marketing Pty Ltd	Boesmansrug / Mardale	2	Grower	Apples	South Africa	156	81%	19%	31%	69%	Yes, worker committee
Fruitways Marketing Pty Ltd	Rus Valey Bk	2	Grower	Apples	South Africa	64	67%	33%	59%	41%	Yes, worker committee
Fruitways Marketing Pty Ltd	Dwarsberg	2	Grower	Apples	South Africa	41	83%	17%	66%	34%	Yes, worker committee
Fruitways Marketing Pty Ltd	Sandhoogte	2	Grower	Apples	South Africa	23	78%	22%	39%	61%	Yes, worker committee
Fruitways Marketing Pty Ltd	Leccino Farms	2	Grower	Apples	South Africa	84	81%	19%	19%	81%	Yes, worker committee
Fruitways Marketing Pty Ltd	Cordale	2	Grower	Apples	South Africa	69	55%	45%	72%	28%	Yes, worker committee
Fruitways Marketing Pty Ltd	Tof Agri / Alartskraal	2	Grower	Apples	South Africa	27	52%	48%	100%	0%	Yes, worker committee
Fruitways Marketing Pty Ltd	Vergenoegd	2	Grower	Apples	South Africa	22	77%	23%	36%	64%	Yes, worker committee
Fruitways Marketing Pty Ltd	Stofberg Wine Estate	2	Grower/Packer	Apples, Pears	South Africa	27	56%	44%	37%	63%	Yes, worker committee
Fruitways Marketing Pty Ltd	Eikendal Elgin / Winterset	2	Grower	Apples, Pears	South Africa	102	69%	31%	74%	26%	Yes, worker committee
Fruitways Marketing Pty Ltd	Cheverells	2	Grower	Apples, Pears	South Africa	54	81%	19%	20%	80%	Yes, worker committee
Fruitways Marketing Pty Ltd	The Valco	2	Grower	Apples, Pears	South Africa	281	41%	59%	17%	83%	Yes, worker committee
Fruitways Marketing Pty Ltd	Nidderdale	2	Grower	Apples, Pears	South Africa	59	86%	14%	37%	63%	Yes, worker committee
Fruitways Marketing Pty Ltd	South End Farm	2	Grower	Apples, Pears	South Africa	170	71%	29%	32%	68%	Yes, worker committee
Fruitways Marketing Pty Ltd	Cloudsend (Pty) Ltd - V0401	2	Grower	Apples, Pears	South Africa	39	97%	3%	100%	0%	Yes, worker committee
Fruitways Marketing Pty Ltd	Nabo Farm	2	Grower	Apples, Pears	South Africa	26	69%	31%	77%	23%	Yes, worker committee
Fruitways Marketing Pty Ltd	Coltfoot Farming	2	Grower	Apples, Pears	South Africa	38	71%	29%	11%	89%	Yes, worker committee
Fruitways Marketing Pty Ltd	Anytime Investments (Sedex - Rainbow Hill Fruit Pty Ltd)	2	Grower	Apples, Pears	South Africa	18	89%	11%	28%	72%	Yes, worker committee
Fruitways Marketing Pty Ltd	Tolbos	2	Grower	Apples, Pears	South Africa	189	87%	13%	49%	51%	Yes, worker committee
Tru-Cape Fruit Marketing (Pty) Ltd	Drumearn (Pty) Ltd	3	Grower	Apples, Pears	South Africa	64	73%	27%	31%	69%	Yes, worker committee
Tru-Cape Fruit Marketing (Pty) Ltd	Witzenberg Properties (Edms) Bpk	3	Grower	Apples, Pears	South Africa	1,672	78%	22%	17%	83%	Yes, worker committee
Tru-Cape Fruit Marketing (Pty) Ltd	Welgemeen Boerdery (Edms) Bpk	3	Grower	Apples, Pears	South Africa	457	44%	56%	30%	70%	Yes, worker committee
Tru-Cape Fruit Marketing (Pty) Ltd	Wilgenhof 383 Boerdery (Edms) Bpk	3	Grower	Apples, Pears	South Africa	135	78%	22%	2%	98%	Yes, worker committee
Tru-Cape Fruit Marketing (Pty) Ltd	Verdun Estates (Edms) Bpk	3	Grower	Apples, Pears	South Africa	398	74%	26%	44%	56%	Yes, worker committee
Tru-Cape Fruit Marketing (Pty) Ltd	Laastedrif Agri (Edms) Bpk	3	Grower	Apples, Pears	South Africa	983	66%	34%	30%	70%	Yes, worker committee

Data correct as of March 2023

Supplier Name	Site Name	Tier	Site Type (Factory/Farm/ Packaging/Feed/Vessel)	Products Supplied	Country	Total Worker Number	% Male Identifying Workers	% Female Identifying Workers	% Permanent Workers	% Agency/ Temporary Workers	Presence of Trade Union and/or worker committee
Tru-Cape Fruit Marketing (Pty) Ltd	Pp Mong Trust	3	Grower	Apples, Pears	South Africa	337	72%	28%	42%	58%	Yes, worker committee
Tru-Cape Fruit Marketing (Pty) Ltd	Ithemba Elitsha Farming (Pty) Ltd - Corner Farm / Valley Green	3	Grower	Apples, Pears	South Africa	75	85%	15%	40%	60%	Yes, worker committee
Tru-Cape Fruit Marketing (Pty) Ltd	Lourens Agri (Pty) Ltd	3	Grower	Apples, Pears	South Africa	143	82%	18%	20%	80%	Yes, worker committee
Tru-Cape Fruit Marketing (Pty) Ltd	A.r. Wijnberg Farming	2	Packhouse	Apples	South Africa	33	73%	27%	70%	30%	Yes, worker committee
Tru-Cape Fruit Marketing (Pty) Ltd	Altius Trading 237 (Pty) Ltd	3+	Grower	Apples	South Africa	42	74%	26%	48%	52%	Yes, worker committee
Tru-Cape Fruit Marketing (Pty) Ltd	Ama Casa Props 35	3+	Grower	Apples	South Africa	68	81%	19%	12%	88%	Yes, worker committee
Tru-Cape Fruit Marketing (Pty) Ltd	Amanzi Farming Company	3+	Grower	Apples	South Africa	50	84%	16%	6%	94%	Yes, worker committee
Tru-Cape Fruit Marketing (Pty) Ltd	Bakenskloof (Pty) Ltd	3+	Grower	Apples	South Africa	47	49%	51%	98%	2%	Yes, worker committee
Tru-Cape Fruit Marketing (Pty) Ltd	Bialestock Cc T/A Ganskraal	3+	Grower	Apples	South Africa	87	70%	30%	17%	83%	Yes, worker committee
Tru-Cape Fruit Marketing (Pty) Ltd	Boncrest Boerdery - Fortuin	3+	Grower	Apples	South Africa	53	74%	26%	19%	81%	Yes, worker committee
Tru-Cape Fruit Marketing (Pty) Ltd	Da Corder Beaulieu Farm Cc	3+	Grower	Apples	South Africa	155	77%	23%	26%	74%	Yes, worker committee
Tru-Cape Fruit Marketing (Pty) Ltd	Die Hoek Boerdery	3+	Grower	Apples	South Africa	43	77%	23%	51%	49%	Yes, worker committee
Tru-Cape Fruit Marketing (Pty) Ltd	Diepgat Plase (Edms) Bpk	3+	Grower	Apples	South Africa	36	47%	53%	67%	33%	Yes, worker committee
Tru-Cape Fruit Marketing (Pty) Ltd	Elgin Grove Farm Cc	3+	Grower	Apples	South Africa	8	87.5%	12.5%	87.5%	12.5%	Yes, worker committee
Tru-Cape Fruit Marketing (Pty) Ltd	Ensemble Trading 86 (Pty) Ltd	3+	Grower	Apples	South Africa	27	56%	44%	33%	67%	Yes, worker committee
Tru-Cape Fruit Marketing (Pty) Ltd	Ga Erasmus En Seuns Bdy (Pty) Ltd	3+	Grower	Apples	South Africa	15	67%	33%	100%	0%	Yes, worker committee
Tru-Cape Fruit Marketing (Pty) Ltd	Habdron Properties (Pty) Ltd	3+	Grower	Apples	South Africa	55	65%	35%	9%	91%	Yes, worker committee
Tru-Cape Fruit Marketing (Pty) Ltd	Hammanshof Boerdery	3+	Grower	Apples	South Africa	26	77%	23%	42%	58%	Yes, worker committee
Tru-Cape Fruit Marketing (Pty) Ltd	Jb Walker Ouplaas	3+	Grower	Apples	South Africa	155	40%	60%	4%	96%	Yes, worker committee
Tru-Cape Fruit Marketing (Pty) Ltd	Jonkersrivier Bdy (Edms) Bpk	3+	Grower	Apples	South Africa	45	71%	29%	71%	29%	Yes, worker committee
Tru-Cape Fruit Marketing (Pty) Ltd	Kemsprivier Plase (Edms) Bpk	3+	Grower	Apples	South Africa	19	79%	21%	26%	74%	Yes, worker committee
Tru-Cape Fruit Marketing (Pty) Ltd	Klein Heidepan Plase	3+	Grower	Apples	South Africa	71	89%	11%	24%	76%	Yes, worker committee
Tru-Cape Fruit Marketing (Pty) Ltd	La Fontana Farming Cc T/A Vitana Springfontein	3+	Grower	Apples	South Africa	25	68%	32%	28%	72%	Yes, worker committee
Tru-Cape Fruit Marketing (Pty) Ltd	Lakeview Farming Co Pty Ltd	3+	Grower	Apples	South Africa	25	80%	20%	48%	52%	Yes, worker committee
Tru-Cape Fruit Marketing (Pty) Ltd	Lemoenpoort	3+	Grower	Apples	South Africa	63	43%	57%	51%	49%	Yes, worker committee
Tru-Cape Fruit Marketing (Pty) Ltd	Middelplaas Bdy (Edms) Bpk	3+	Grower	Apples	South Africa	44	82%	18%	39%	61%	Yes, worker committee
Tru-Cape Fruit Marketing (Pty) Ltd	Monte Vista	3+	Grower	Apples	South Africa	29	86%	14%	17%	83%	Yes, worker committee
Tru-Cape Fruit Marketing (Pty) Ltd	Morgenrood Boerdery (Edms) Bpk	3+	Grower	Apples	South Africa	76	57%	43%	86%	14%	Yes, worker committee
Tru-Cape Fruit Marketing (Pty) Ltd	Morning Star Farm	3+	Grower	Apples	South Africa	36	83%	17%	39%	61%	Yes, worker committee
Tru-Cape Fruit Marketing (Pty) Ltd	Oak Valley Estates (Pty) Ltd	3+	Grower	Apples	South Africa	611	61%	39%	40%	60%	Yes, worker committee
Tru-Cape Fruit Marketing (Pty) Ltd	Oewerzicht Boerdery	3+	Grower	Apples	South Africa	103	77%	23%	34%	66%	Yes, worker committee
Tru-Cape Fruit Marketing (Pty) Ltd	P Reuvers Plase (Edms) Bpk	3+	Grower	Apples	South Africa	148	73%	27%	51%	49%	Yes, worker committee
Tru-Cape Fruit Marketing (Pty) Ltd	Ryk Joubert Trust	3+	Grower	Apples	South Africa	51	53%	47%	22%	78%	Yes, worker committee
Tru-Cape Fruit Marketing (Pty) Ltd	Skoon Vooruitsig (Pty) Ltd	3+	Grower	Apples	South Africa	19	84%	16%	100%	0%	Yes, worker committee
Tru-Cape Fruit Marketing (Pty) Ltd	Stettyn Estate (Pty) Ltd	3+	Grower	Apples	South Africa	96	75%	25%	52%	48%	Yes, worker committee
Tru-Cape Fruit Marketing (Pty) Ltd	Stettyn Wingerde	3+	Grower	Apples	South Africa	42	71%	29%	76%	24%	Yes, worker committee
Tru-Cape Fruit Marketing (Pty) Ltd	Tangeni Cattle Company (Pty) Ltd	3+	Grower	Apples	South Africa	54	72%	28%	24%	76%	Yes, worker committee
Tru-Cape Fruit Marketing (Pty) Ltd	Thelema Mountain Vineyards (Pty) Ltd	3+	Grower	Apples	South Africa	51	76%	24%	39%	61%	Yes, worker committee
Tru-Cape Fruit Marketing (Pty) Ltd	Welgemoed Farm (Gr Southern)	3+	Grower	Apples	South Africa	21	52%	48%	62%	38%	Yes, worker committee
Tru-Cape Fruit Marketing (Pty) Ltd	Weltevreden Farm	3+	Grower	Apples	South Africa	22	68%	32%	68%	32%	Yes, worker committee
Tru-Cape Fruit Marketing (Pty) Ltd	Willem-Thonie Bdy (Edms) Bpk	3+	Grower	Apples	South Africa	84	74%	26%	36%	64%	Yes, worker committee
Tru-Cape Fruit Marketing (Pty) Ltd	Yellowwood Farming Cc T/A Restanwold Farm	3+	Grower	Apples	South Africa	68	79%	21%	57%	43%	Yes, worker committee



## Beyond Tier 1 Delivering Transparency in High-Risk Supply Chains: Top & Stone Fruit



Supplier Name	Site Name	Tier	Site Type (Factory/Farm/ Packaging/Feed/Vessel)	Products Supplied	Country	Total Worker Number	% Male Identifying Workers	% Female Identifying Workers	% Permanent Workers	% Agency/ Temporary Workers	Presence of Trade Union and/or worker committee
Tru-Cape Fruit Marketing (Pty) Ltd	Von Buddenbrock, Pe	3+	Grower	Apples	South Africa	32	78%	22%	56%	44%	Yes, worker committee
Tru-Cape Fruit Marketing (Pty) Ltd	Leopont 484 Properties (Edms) Bpk	3+	Grower	Apples	South Africa	117	79%	21%	28%	72%	Yes, worker committee
Tru-Cape Fruit Marketing (Pty) Ltd	Mjw Boerdery Bk	3+	Grower	Apples	South Africa	80	80%	20%	35%	65%	Yes, worker committee
Tru-Cape Fruit Marketing (Pty) Ltd	Loch Lynne (Edms) Bpk	3+	Grower	Apples	South Africa	937	64%	36%	8%	92%	Yes, worker committee
Tru-Cape Fruit Marketing (Pty) Ltd	Aurora Boerdery (Edms) Bpk	3+	Grower	Apples	South Africa	48	75%	25%	100%	0%	Yes, worker committee
Tru-Cape Fruit Marketing (Pty) Ltd	Glen Klondyke Estates (Edms) Bpk T/A Klondyke Farm	3+	Grower	Apples	South Africa	71	51%	49%	27%	73%	Yes, worker committee
Tru-Cape Fruit Marketing (Pty) Ltd	Langfontein Boerdery Bk	3+	Grower	Apples	South Africa	18	72%	28%	100%	0%	Yes, worker committee
Tru-Cape Fruit Marketing (Pty) Ltd	Sun Sweet Fruit Bk H/A Ouplaas Boerdery	3+	Grower	Apples	South Africa	243	70%	30%	16%	84%	Yes, worker committee
Tru-Cape Fruit Marketing (Pty) Ltd	Eselffontein Boerdery (Edms) Bpk	3+	Grower	Apples	South Africa	189	76%	24%	46%	54%	Yes, worker committee
Tru-Cape Fruit Marketing (Pty) Ltd	Cedro Boerdery (Edms) Bpk	3+	Grower	Apples	South Africa	199	78%	22%	25%	75%	Yes, worker committee
Tru-Cape Fruit Marketing (Pty) Ltd	Dp En Jc Goosen Boerdery (Edms) Bpk	3+	Grower	Apples	South Africa	950	44%	56%	55%	45%	Yes, worker committee
Tru-Cape Fruit Marketing (Pty) Ltd	Ljl Hanekom Bk	3+	Grower	Apples	South Africa	38	50%	50%	100%	0%	Yes, worker committee
Tru-Cape Fruit Marketing (Pty) Ltd	Kweperfontein Landgoed (Edms) Bpk	3+	Grower	Apples	South Africa	87	64%	36%	31%	69%	Yes, worker committee
Tru-Cape Fruit Marketing (Pty) Ltd	Pj Möller Jnr Bk	3+	Grower	Apples	South Africa	246	57%	43%	22%	78%	Yes, worker committee
Tru-Cape Fruit Marketing (Pty) Ltd	Rjf Boerdery (Edms) Bpk	3+	Grower	Apples	South Africa	168	69%	31%	38%	62%	Yes, worker committee
Tru-Cape Fruit Marketing (Pty) Ltd	Rietvlei Fruit Farming (Edms) Bpk	3+	Grower	Apples	South Africa	32	75%	25%	78%	22%	Yes, worker committee
Tru-Cape Fruit Marketing (Pty) Ltd	Agterfontein Boerdery Edms (Bpk)	3+	Grower	Apples	South Africa	39	67%	33%	100%	0%	Yes, worker committee
Tru-Cape Fruit Marketing (Pty) Ltd	Schapenrivier Boerdery Bk	3+	Grower	Apples	South Africa	46	63%	37%	22%	78%	Yes, worker committee
Fruitways Marketing Pty Ltd	Ebuta Farming (Pty)Ltd & Michael Button	2	Grower	Apples	South Africa	97	73%	27%	40%	60%	Yes, worker committee
Frular Sat 197	Frular	1	Grower/Packer	Apples, Pears	Spain	79	16%	84%	28%	72%	Yes, Trade Union
Groda Agf B.v.	Groda	2	Grower/Packer	Apples, Pears	The Netherlands	36	64%	36%	50%	50%	No
Fruitmasters Holland Bv	Royal Fruitmasters Group	2	Grower/Packer	Apples, Pears	The Netherlands	649	61%	39%	49%	51%	Yes, Trade Union
Alan Hudson Ltd	Alan Hudson Ltd	2	Grower	Apples, Pears	United Kingdom	41	61%	39%	37%	63%	No
G.h.chambers (Northiam Farms)	Northiam Farm	1	Grower/Packer	Apples, Pears	United Kingdom	23	52%	48%	17%	83%	No
Peake Fruit (Plantsman Po)	Peake Fruit Limited (Boxford Suffolk) Farms Ltd	1	Grower/Packer	Apples, Pears	United Kingdom	250	48%	52%	12%	88%	Yes, Trade Union
Total Solutions	Total Solutions (Enterprise Way)	1	Packer	Apples, Pears	United Kingdom	129	58%	42%	70%	30%	Yes, worker committee