

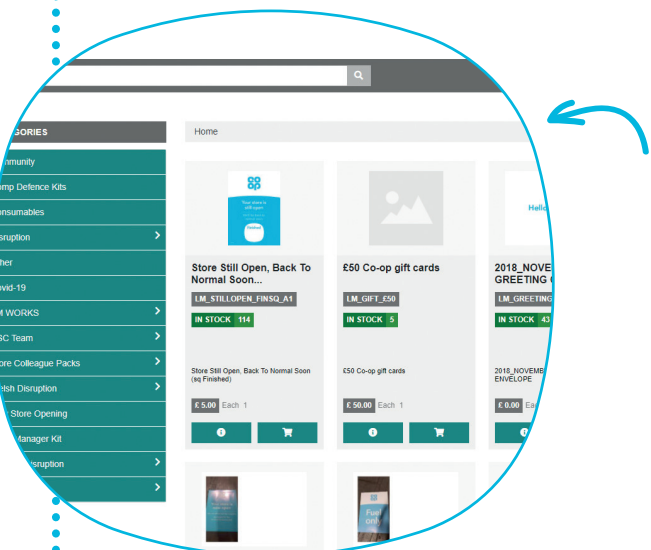
Your resources

Did you know you can gain access to more items similar to your Local Engagement pack by visiting your Local Hub or HH online POS catalogue?

The HHub Online Catalogue

The HHub Online Catalogue enables you to search for suitable POS assets and community kit lines, such as reusable coffee cups, high vis jackets, t-shirts and so much more!

To access the catalogue, use the URL <https://hhub.hhglobal.com/Coop/Login>. For your initial login please select the Forgotten Password button and enter your hub number as your Username.



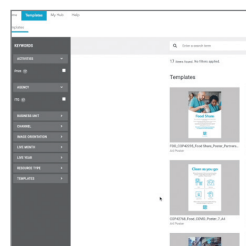
the local hub

Connecting you to local marketing templates in minutes

The Local Hub

Your local hub is where you can find a range of marketing templates to personalise and download or send directly to print. The site contains templates for marketing items such as posters, newsletters, certificates and other useful materials.

How to sign up:
Go to coop.itgcanopy.com and click to create an account



There is also a short training video on your homepage to help you navigate around your Local Hub.

1
Create an account

2
Complete a short form

3
Find and enter your store address

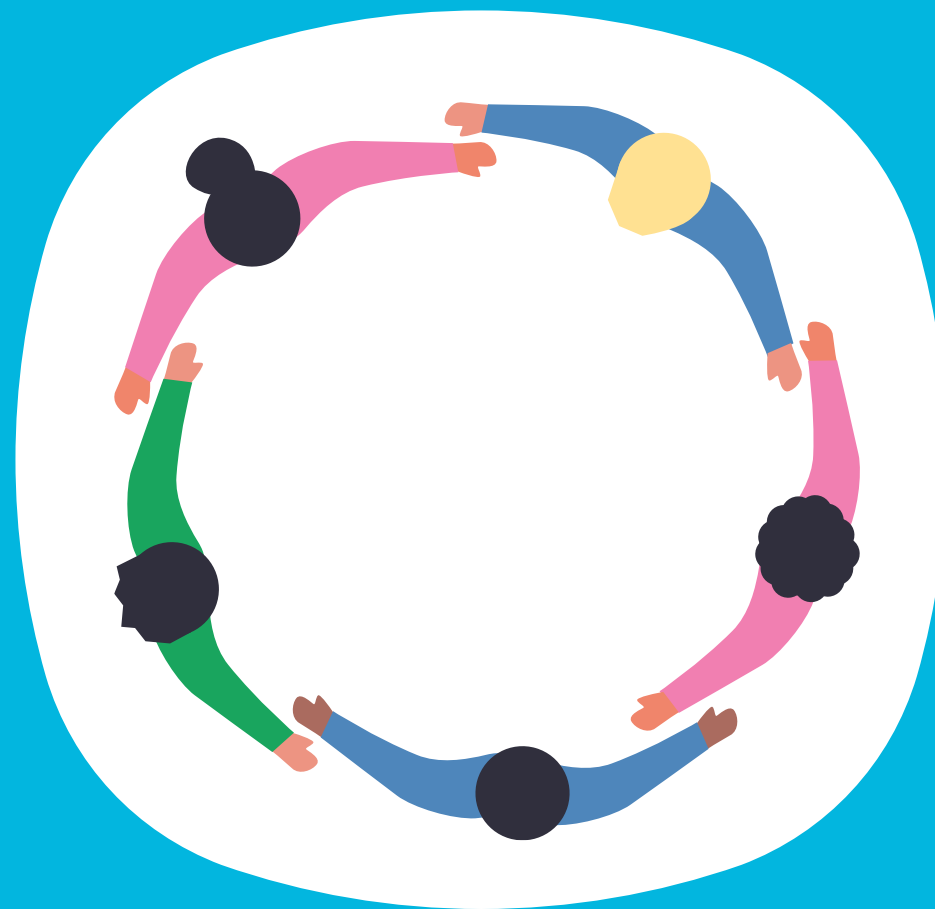
4
Click to register

Your Local Engagement Pack

Q4 2021



It's what we do





2021 Activity Pack

Your Q4 local engagement activity packs have arrived.

Here at Co-op, we're all about community. Engaging with locals is an important part of what we do and being active in the community helps us show our neighbours that we're a different kind of business.

As lockdown restrictions continue to ease, we want to encourage our customers to have some fun and get excited for the winter events ahead. But we need your help.

About our activity packs:

The idea is to use your activity packs to engage with your neighbours and build connections in your area. As a manager and a member of the community, you're in a unique position to help us make that happen. Our packs are designed to be enjoyed by everyone, not just individual groups, and inside each pack you'll find lots of activities for all kinds of occasions. Every occasion is a new opportunity to understand the community, get to know your neighbours, and celebrate together.

How to use your packs:

Before we connect with our community, the first thing we need to do is get our packs out there and spread the word. To get started, you could:

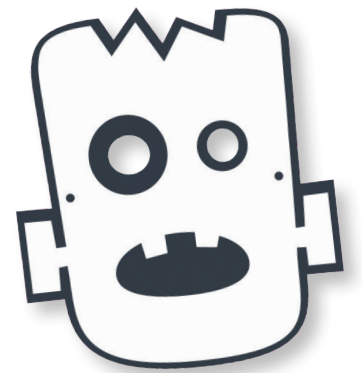
- Contact your local Member Pioneer and ask them for support
 - Reach out to your local schools or care homes
 - Create noise by actively talking about the packs instore
- Reach out to local community groups (e.g. Scouts, Youth Clubs, Parenting groups)
 - Talk about your packs and the activities inside on social media

If you have any questions or need a helping hand,
email helloneighbour@coop.co.uk.
 Now, let's get out there and have some fun!

Monster masks

Sunday, 31st October

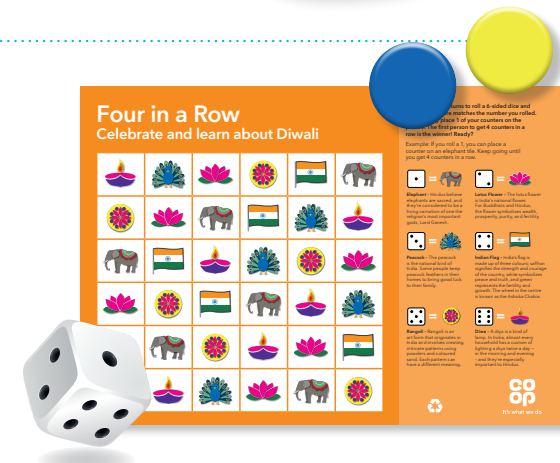
This activity is perfect for trick or treaters. Get your community excited for Halloween and encourage your customers to add some colour to our spooky mask design. Some families might not be able to afford costumes right now, so these masks could really make someone's day. Think about where you could hand out your activity packs so the whole community can get involved. e.g. your local primary school.



Four in a row

Thursday, 4th November

Use our Four in a Row game to celebrate and learn about Diwali. To play, take it in turns to roll a 6-sided dice and see which picture matches the number rolled. Then, simply place a counter on one of the pictures. The first person to get 4 counters in a row is the winner. Easy! You could use this activity to connect with people in your community celebrating Diwali, as well as other members of the community who might want to learn more about different cultures. Spread the word and encourage your customers to get involved.



World Kindness Day

Saturday, 13th November

These lovely little kindness cards have nice notes and compliments written on them, and they were designed to be hidden inside lunchboxes, coat pockets, and other belongings. Encourage your community to spread some love to each other and remind their friends, families, neighbours, and co-workers how special they are by hiding cards somewhere they can be found. A wholesome activity suitable for all ages.



Colour your own Christmas card

December onwards!

To celebrate Christmas, children within your community will be able to colour and decorate an extra special card. Kids can send their cards to family, friends, a neighbour, or maybe even local care home residents. A perfect activity for local schools or community groups to get involved in.



International Mental Health Awareness Day

Sunday, 10th October

Drawing is scientifically proven to help you relax, and you're never too old to get creative. Encourage your community to check in on their mental health and give themselves a few minutes of 'me time' by adding some colour to this design. You could also remind them to try the activities on the back of their World Mental Health Day activity sheets. Next time you see your neighbours, ask them what they thought of the activity. Following up could be a great opportunity to fight mental health stigma and strengthen your connections within the community.

