

FAIRTRADE BOARD GAME



Being a farmer without Fairtrade by your side can be tough. But here at Co-op, we care about where our products come from. Fairtrade pays the farmers that grow your food a fair and decent wage, and that's why we've supported the organisation for over 26 years.

Play the Fairtrade Board Game, learn about the food you eat, and find out what it's like to grow food without Fairtrade's support.

What you need:

1. 1 x numbered dice and 4 counters
2. 1 x paper game board
3. 1 x question and answer sheet

How it works:

First, roll the dice. If you roll a 5, move 5 spaces. When you land on a coloured tile, your opponent can ask you a question from the list that matches the colour you landed on. Answer the question correctly to score 1 point.



FAIRTRADE

QUESTIONS



co op
It's what we do



COCOA

- Q1: Which country grows the most cocoa?
- Q2: Cocoa pods are the fruit of which tree?
- Q3: How many years does it take this tree to grow its first cocoa pods?
- Q4: When was the first chocolate bar made?
- Q5: White chocolate isn't chocolate - true or false?

Answers:

- Q1: Cote d'Ivoire
- Q2: Cacao
- Q3: 5 years
- Q4: 1847
- Q5: True. White chocolate does not contain cocoa



TEA

- Q1: Which country grows the most tea?
- Q2: When was the first tea bag invented?
- Q3: Where was the first tea bag invented?
- Q4: Which country consumes the most tea per person?
- Q5: What is the art of reading tea leaves called?

Answers:

- Q1: China
- Q2: 1908
- Q3: USA
- Q4: Turkey
- Q5: Tasseography



COFFEE

- Q1: Which country produces the most coffee?
- Q2: On average, which country drinks the most coffee per person?
- Q3: The word 'coffee' comes from the Arabic word for what?
- Q4: One cup of black coffee only contains one calorie - true or false?
- Q5: Where does coffee originate from?

Answers:

- Q1: Brazil
- Q2: Finland
- Q3: Wine
- Q4: True
- Q5: Ethiopia



BANANAS

- Q1: What percentage of Co-op's bananas are Fairtrade - 25%, 50%, 75% or 100%?
- Q2: What type of fruit is a banana?
- Q3: A bunch of bananas is known as what?
- Q4: Can bananas be blue?
- Q5: There are over 1,000 varieties of banana - true or false?

Answers:

- Q1: 100%
- Q2: A berry
- Q3: Hand
- Q4: Yes! Blue bananas grow in India
- Q5: True



WINE

- Q1: Grapes are the most planted fruit in the world - true or false?
- Q2: Which country produces the most wine?
- Q3: What is a fear of wine known as?
- Q4: Toasting started in ancient Rome - true or false?
- Q5: Co-op is the world's largest seller of Fairtrade wine - true or false?

Answers:

- Q1: True
- Q2: Italy
- Q3: Oenophobia
- Q4: True - Romans would often drop a piece of toasted bread into wine to soften the taste
- Q5: True



SUGAR

- Q1: Which country produces the most sugar?
- Q2: When did Co-op sell 100% Fairtrade sugar?
- Q3: Sugar was once considered a spice - true or false?
- Q4: Sugar is found in all plants - true or false?
- Q5: A lemon contains more sugar than a strawberry - true or false?

Answers:

- Q1: Brazil
- Q2: 2016
- Q3: True
- Q4: True
- Q5: True

FAIRTRADE

PLAYERS & DICE



Save paper if you can

It's always good to save on waste by re-using unwanted items. If you can, print your board game on the back of some used paper. Or use some old cardboard from a cereal box to make some home-made dice.

No dice?

If you don't have dice at home, you could try downloading a digital dice app on your phone.



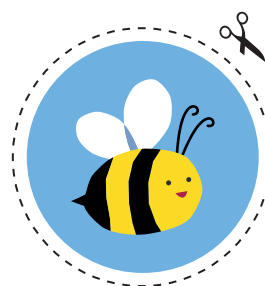
SHOPPING BAG



FAIRTRADE MUG



SUGAR BAG



WORKER BEE

