

NextGen AODB

Case for Change

NOVEMBER, 2024



CiSS is the existing Airport Operational Database and supported Schiphol and the aviation sector for many years as the single source of truth for daily operations and distributes flight related information



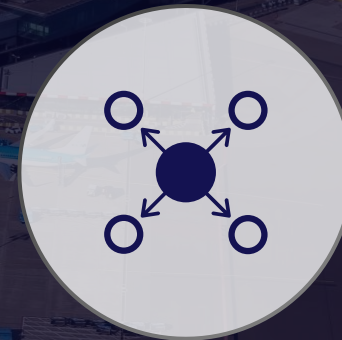
Single source of truth

For all flight related information and functions



Daily operations

Running the operation, and enabling planning and forecasting



Distributing information

Distribute flight related info to all stakeholders

CiSS is the heart of Schiphol and performs solidly, but is complex & risky to maintain...

...and poses significant business continuity risks and delays to our TAM vision

Growing complexity hampers changes

- CiSS code base stable but highly complex, and with limited system documentation
- Changes or improvements are difficult, time-consuming and expensive

Inherent risk on our operations

- CiSS is at the heart of Schiphol, downtime could severely impact our operations
- The CiSS data model is outdated and changes to it are inherently risky

Gaps with non-functional requirements poses a risk to business continuity

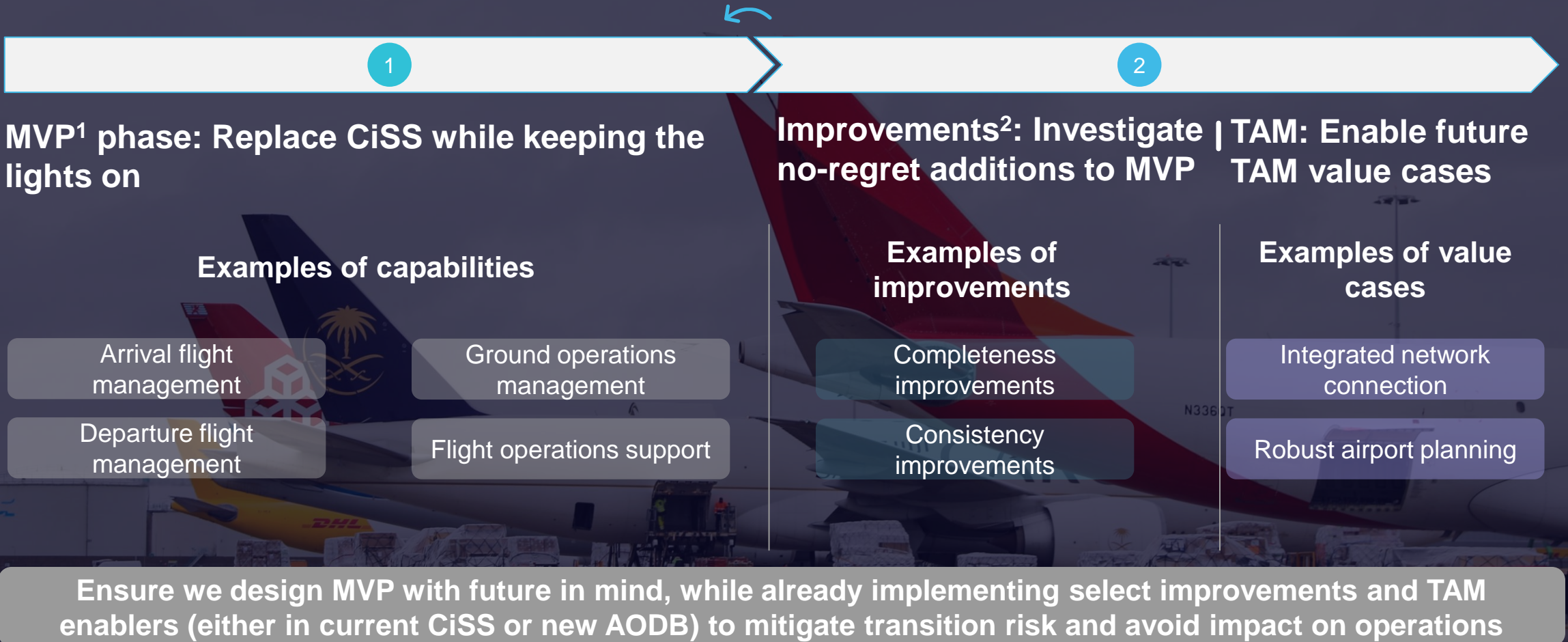
- Compliancy issues with security, ending support for the database and infrastructure
- High complexity of the data model and business logic

Challenges to implement improvements and enable the TAM¹ vision

- Difficulties for implementing current business requirements in CiSS
- Difficulties to quickly implement TAM value cases to unlock a seamless airport operations

1. Total Airport Management is a European initiative to increase cooperation between all the different parties in the aviation chain

Our first priority is the technical replacement and 'keeping the lights on', while preparing to add improvements and supporting the TAM ambition



1. Minimal Viable Product: solution that covers minimally required functionality for users to adopt

Schiphol



BCG