



Memo 21 construction work HT1 Lounge 1

In addition to the general communication about the HT1 project, an update is provided on a bi-weekly basis, containing an overview of the planned construction work and associated operational impact. This update describes the construction work that will take place in the six weeks following the update. The purpose of this update is for all partners of the airport involved in the remodeling of Lounge 1, to gain insight into what can be expected in terms of construction work and impact on the operation.

Planned construction work 18-03-2024 t/m 29-04-2024 (6 weeks ahead)

No.	Area	Zone	Activities	Start	Impact
1.	Cockpitplein	2	Installing steel construction and roof plates, floors with reinforcement and facades	From wk 7 From wk 11 Wk 17	Building with crane behind construction fence; When lifting at night, deposits in Terminal; More noise than usual; Pouring floors Cockpitplein; Hoisting mobile platform.
2.	Temporary toilet group	4	Build additional part temporary toilets	Wk 11 Wk 16	Working behind dust barriers; Opening of additional part of temporary toilets.
3.	Toilet group	4	Renovation of toilet group	From wk 10 Wk 11, 12 and 13	Toilet group out of use; Temporary toilet group in use; Working behind dust barriers; A lot of noise at night due to demolition work of walls and floor.
4.	RH Road	5	Construction of installations	Wk 12 and 13	Working in nights; Road partly shut off at nights.
5.	Central square	1	Construction of installations on high ceiling	Wk 12 and 13	Working in high roof in Lounge (aerial work platforms in Lounge in nights).
6.	Runstraat	1	Applying folded sheet metal remaining points	Wk 11 and 12	Occasional barriers with yellow fences; Work during the day.
7.	Runstraat	1	Build FTR locations 8 and 9	From wk 52 Wk 16 Wk 18	Working behind dust barriers that form the SRA-CP boundary with Lounge; Clean sweep; rear wall of shops becomes SRA-CP boundary, dust barriers in front of shops no longer form SRA-CP boundary; Opening FTR 8 and 9.
8.	KLM offices	2	Remaining points	Wk 11	Dissolve remaining points in the nights.
9.	Atrium	2	Installing curtain wall	From wk 12	Working behind dust barriers on the second floor.
10.	Technical room 1A	1	Completion technical room	From wk 37	Working in high roof in Lounge (aerial work platforms in lounge in nights).
11.	Foodcourt	3	Applying constructions under the floor part I	Wk 12	No more displays under the floor; Deposits in the flow at night for work on installations under the floor.



12.	Foodcourt	3	Sealing the floor part II	Wk 11 Wk 14	Deposits with dust barriers in the flow for outriggers; Deposits in the flow at night for hoisting; No more displays under the floor; Deposits in the flow at night for work on installations.
13.	Lift 132	5	Building lift	From wk 6	Construction site in Lounge and on sidewalk next to RH road.
14.	All Day Café	5	Completion All Day Café	From 2023 Wk 16	Working behind dust barriers; Opening All Day Café
15.	Former Capi	4	Temporary toilet group and Aviflora	Wk 10	Temporary toilet group and temporary Aviflora in use.
16.	Sunglasses	3	Move Sunglasses	Wk 9	Temporary Sunglasses in use.
17.	TSF	4	Build temporary Transfer Cluster	From wk 12	Working behind dust barriers.
18.	Bubbles/Chocolat Bar	4	Demolition Bubbles/Chocolate Bar	From wk 16	Working behind dust barriers.
19.	Airside	2	Crane for lifting steel Cockpitplein	From wk 8	Building with crane behind construction fence; When lifting at night, deposits in Terminal.
20.	PRM	1	Finishing plinth of front wall	Wk 12	Working at night, outside the operation.
21.	Schengen/Non-Schengen filter	5	Apply BMI/OAI in high ceiling	From wk 4	Working with aerial work platforms in lounge at night.
22.	Sitting area	3	Apply BMI/OAI in high ceiling	From wk 48	Working with aerial work platforms in lounge at night.
23.	Flow	2	Tiling floor	Wk 14, 15 and 16	Working behind dust barriers; Construction area divided into parts; A lot of noise at night due to carving out the floor.
24.	Perfumes and Cosmetics and Chocolates	2	Demolition Perfumes and Cosmetics and Chocolates	From wk 18	Working behind dust barriers.

Mitigating measures

The project tries to limit the nuisance for passengers and people who work at the airport as much as possible. A number of general principles are used for this purpose. The project ensures that as much as possible:

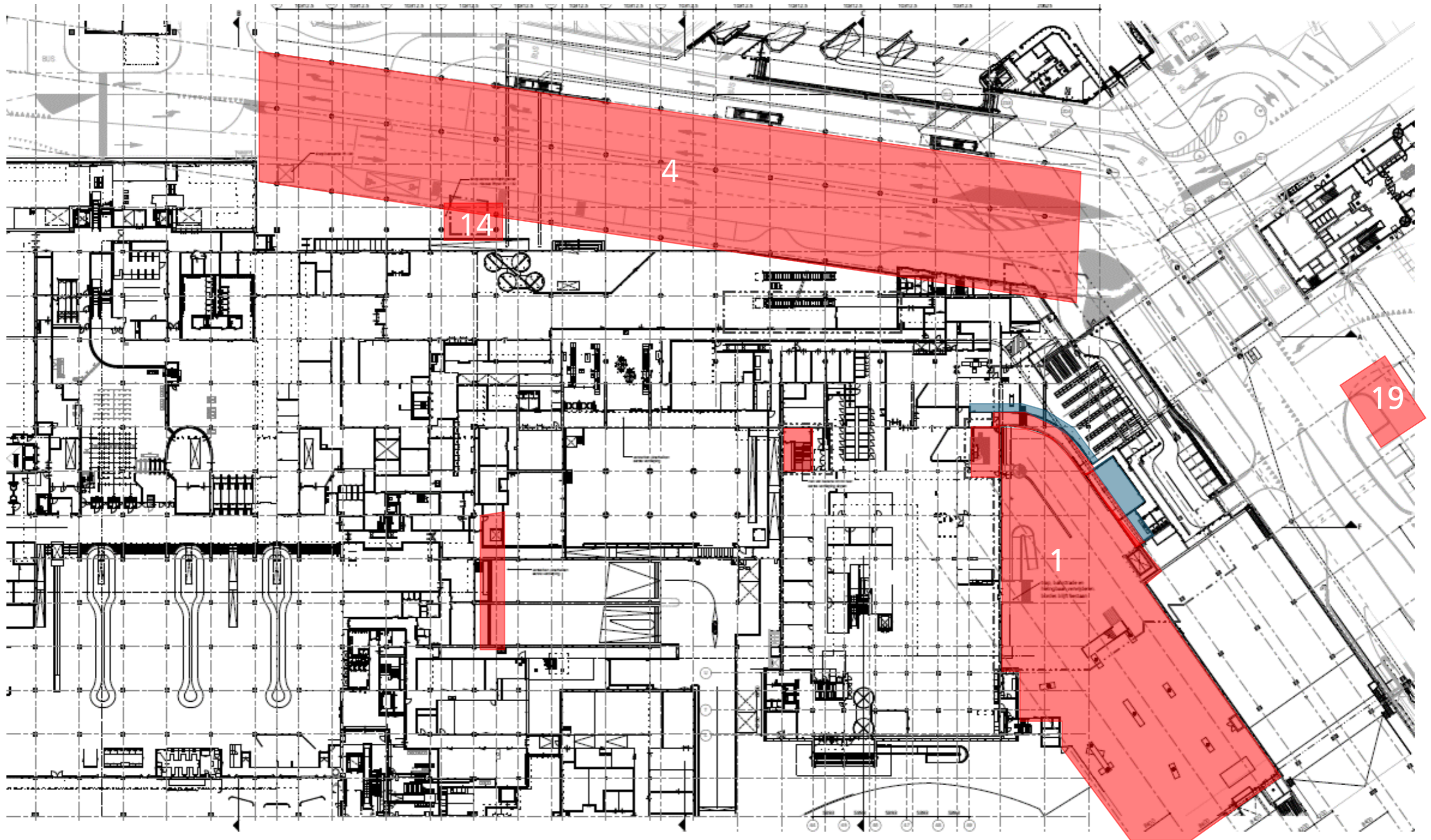
- Activities that create noise nuisance are carried out at night;
- Logistic flows for the purpose of construction through areas that are in use, are carried out at night;
- Permanent restrictions of flow width are kept to a minimum.

If you have any questions regarding this overview, please contact your regular Schiphol contact person.

Please note: no rights can be derived from the periods and impact mentioned in this memo. The above is an estimate and can still change.

Ground floor

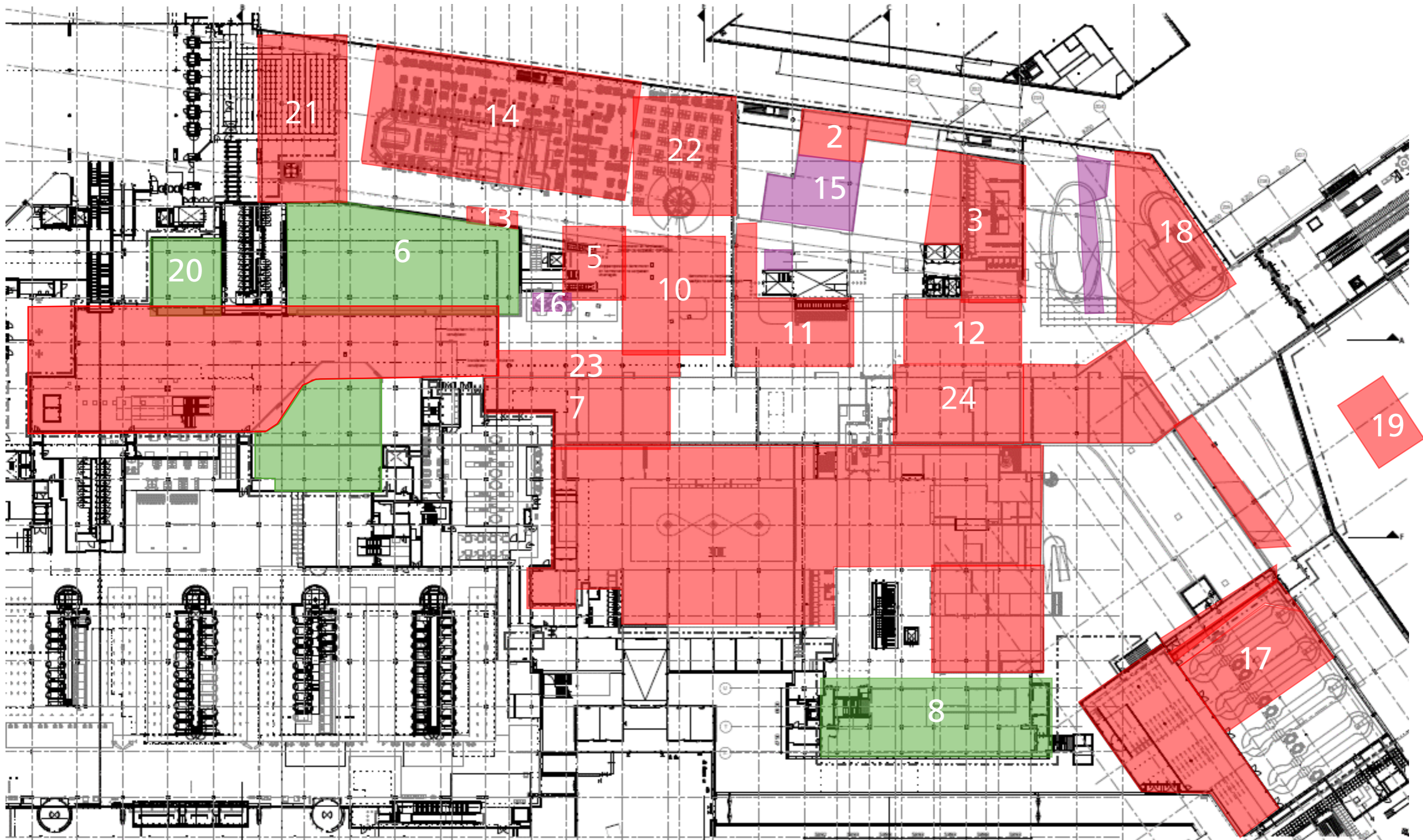
18-03-2024 t/m 29-04-2024



Disclaimer: the areas in this floor plan do not indicate the exact construction areas. It is an indication of the location of the work. The exact location of the dust barriers is discussed and finalized in the work plans and permit process.

First floor

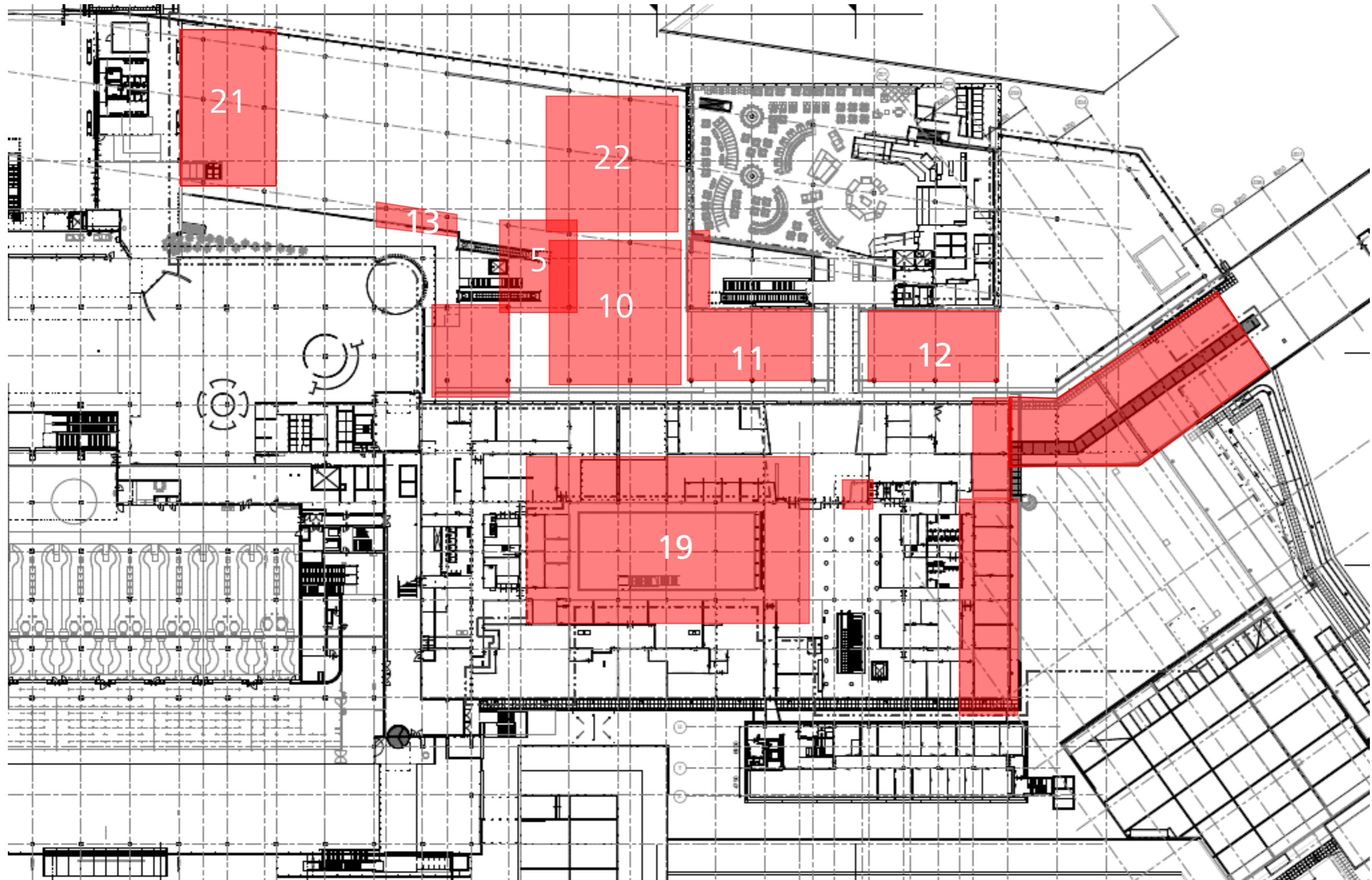
18-03-2024 t/m 29-04-2024



Disclaimer: the areas in this floor plan do not indicate the exact construction areas. It is an indication of the location of the work. The exact location of the dust barriers is discussed and finalized in the work plans and permit process.

Second floor

18-03-2024 t/m 29-04-2024



Disclaimer: the areas in this floor plan do not indicate the exact construction areas. It is an indication of the location of the work. The exact location of the dust barriers is discussed and finalized in the