

# Safety Alert

21 September 2020 A/SSE/HSE-Office

## Roll over container

### Accidents

Recently (but also before) a few accidents and near misses have happened with the so-called roll containers. Also called cage carts

1. Injury incident Departure hall 3 (March 8, 2016)
2. Injury incident Lounge 2 (August 30, 2020)
3. Near-accident Expedition Street (September 8, 2020).

### Causes

These roll containers are extremely suitable for logistical purposes such as stocking shops and supermarkets. However, they are not suitable for transporting building materials. Other resources are available for this purpose. These roll containers also need an even floor. This is rarely the case within construction areas. Improper use of roll containers is often the cause of accidents.

The most common causes of roll container accidents are:

- Reduced stabilization due to incorrect loading of large building materials;
- Rough surface and height differences in the construction area;
- Overloading of the roll container;
- Overdue maintenance that can block wheels.

### Decision

It has therefore been decided to no longer allow the use of roll containers for the transport of building materials and demolition waste within the buildings and sites of Schiphol with immediate effect.



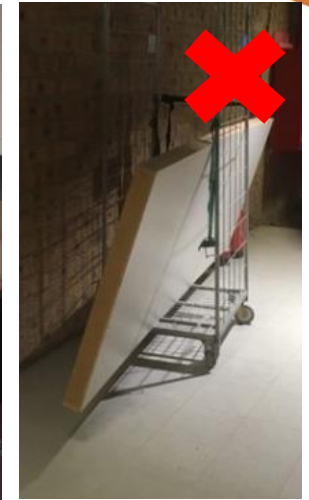
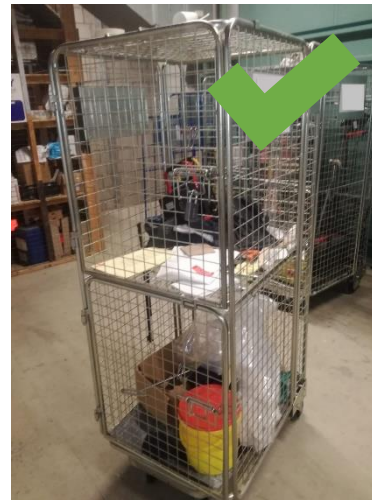
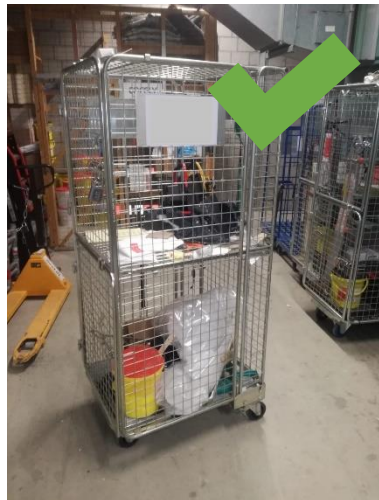
# Safety Alert

## When is a roll container allowed?

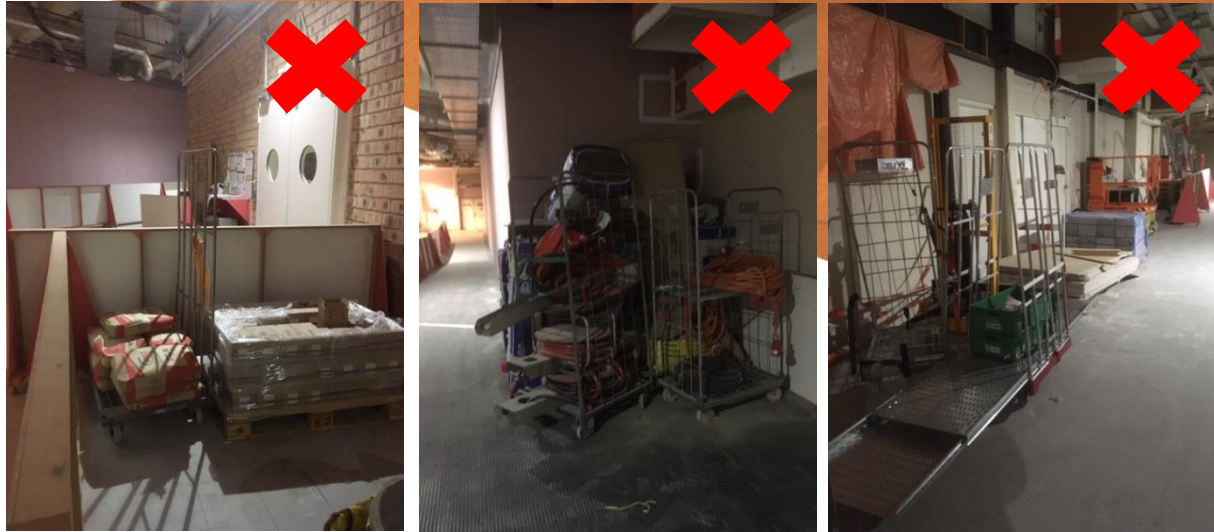
The use of a roll container is **permitted for materials other than building materials and demolition waste** if:

- use takes place in accordance with the supplier's manual;
- use outside construction sites can take place on solid floor area;
- the roll container has gates on 4 sides and a closed top;
- the load remains within the surface of the bottom plate;
- the load does not exceed the maximum loading weight;
- the roll container is not top-heavy loaded. The center of gravity is on the bottom plate;
- the roll container is being pushed and not pulled.

## Examples:



# Safety Alert



If you have any questions or doubts: consult your supervisor or via [safe\\_office@schiphol.nl](mailto:safe_office@schiphol.nl)