

Reece
Irrigation
Design

reece

irrigation
& pools

IRRIGATION SCHEDULE

SYMBOL	MANUFACTURER/MODEL/DESCRIPTION
	HUNTER I-25-06-SS-R 13
	HUNTER I-40-06-SS-R 15
SYMBOL	MANUFACTURER/MODEL/DESCRIPTION
	HUNTER 50MM ICV-FS-R MASTER VALVE
	HUNTER ICV-FS-R CONTROL VALVE - 40MM
	HUNTER ICV-FS-R CONTROL VALVE - 50MM
	RAINSPRAY 25MM QUICK-COUPLING VALVE
	80MM T-HANDLE GATE VALVE (UNO)
	HUNTER HYDRAWISE IRRIGATION CONTROL UNIT
	HUNTER PRO-HC 6 STATION CONTROLLER TURF WICKET VALVES 16,17 & 18 TO BE CONNECTED TO THIS CONTROLLER.
	HYDRAWISE 50MM HC FLOW METER
	EXISTING BOOSTER PUMP
	IRRIGATION LATERAL LINE: LILAC PE100 PN 12.5 63MM
	IRRIGATION LATERAL LINE: LILAC PE100 PN12.5 75MM
	IRRIGATION MAINLINE: 90MM PN12.5 LILAC HDPE
	IRRIGATION LATERAL LINE: B/STRIPE PE100 PN 12.5 63MM
	IRRIGATION MAINLINE: 40MM PN12.5 HDPE (POTABLE) UNLESS NOTED OTHERWISE

IRRIGATION SYSTEM DUTY

245 L/MIN @ AN OPERATING PRESSURE OF 650 kPa

NOTE: A FLOW vs PRESSURE TEST MUST BE CONDUCTED PRIOR TO INSTALLATION COMMENCING TO ENSURE ABOVE SYSTEM DUTY IS MET. FAILURE TO DO SO MAY RESULT IN SYSTEM NOT FUNCTIONING AS INTENDED

DRAWING NOTES

THIS DRAWING MUST BE READ IN CONJUNCTION WITH THE OTHER CONTRACT DOCUMENTS & ANY INSTRUCTIONS ISSUED DURING THE COURSE OF THE PROJECT. CONTRACTORS SHOULD VERIFY ALL DIMENSIONS AND LEVELS ON SITE PRIOR TO ANY COMMENCEMENT OF IRRIGATION WORKS. IF ANY DISCREPANCIES ARE FOUND, BRING THESE IMMEDIATELY TO THE ATTENTION OF THE IRRIGATION DESIGNER.

PRIOR TO COMMENCEMENT OF IRRIGATION WORKS, A FLOW TEST AND PRESSURE TEST SHOULD BE PERFORMED ON-SITE TO CONFIRM SYSTEM DUTY. IF SYSTEM DUTY IS NOT REACHED, A RE-DESIGN MAY BE REQUIRED.

IT IS THE RESPONSIBILITY OF THE CONTRACTOR TO VERIFY THE LOCATION OF ALL UNDERGROUND SERVICES PRIOR TO COMMENCING ANY EXCAVATION WITH ALL RELEVANT AUTHORITIES.

DISTANCES BETWEEN OUTLETS, VALVES, FITTINGS & THE LIKE ARE INDICATIVE ONLY AND MAY BE ALTERED BY THE CONTRACTOR / INSTALLER AT THEIR DISCRETION.

THE REECE GROUP RESERVES ALL RIGHTS IN ITS DESIGNS, DRAWINGS, SPECIFICATIONS AND PLANS. THEY MAY NOT BE REPRODUCED OR OTHERWISE COPIED WITHOUT THE WRITTEN AUTHORIZATION FROM THE REECE GROUP.



DRAWING:

012345-IR-A (SF)

STAGE:

FOR REVIEW ISSUE

TITLE:

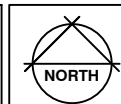
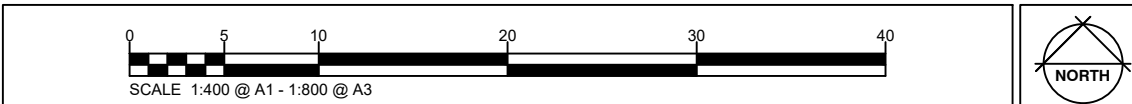
IRRIGATION SYSTEM LAYOUT

CUSTOMER:

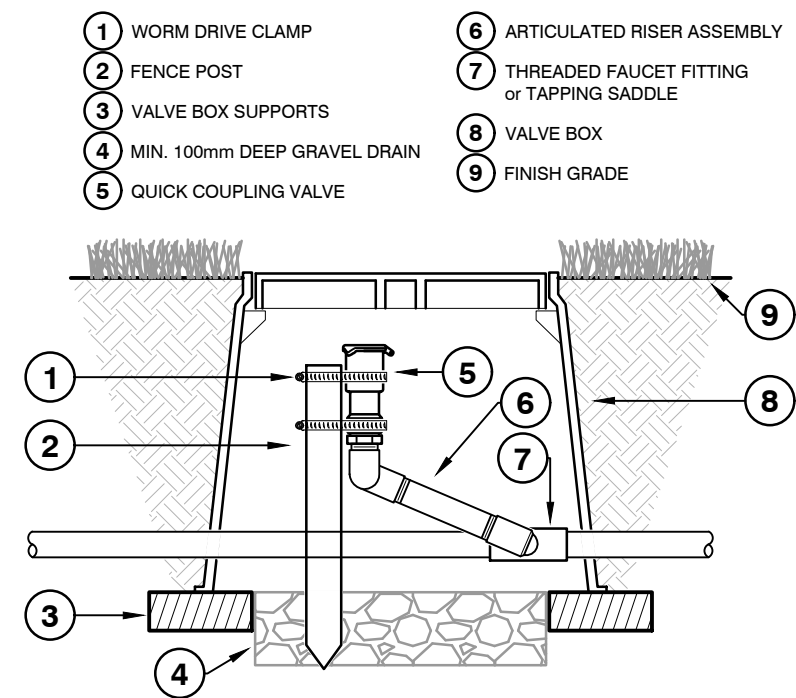
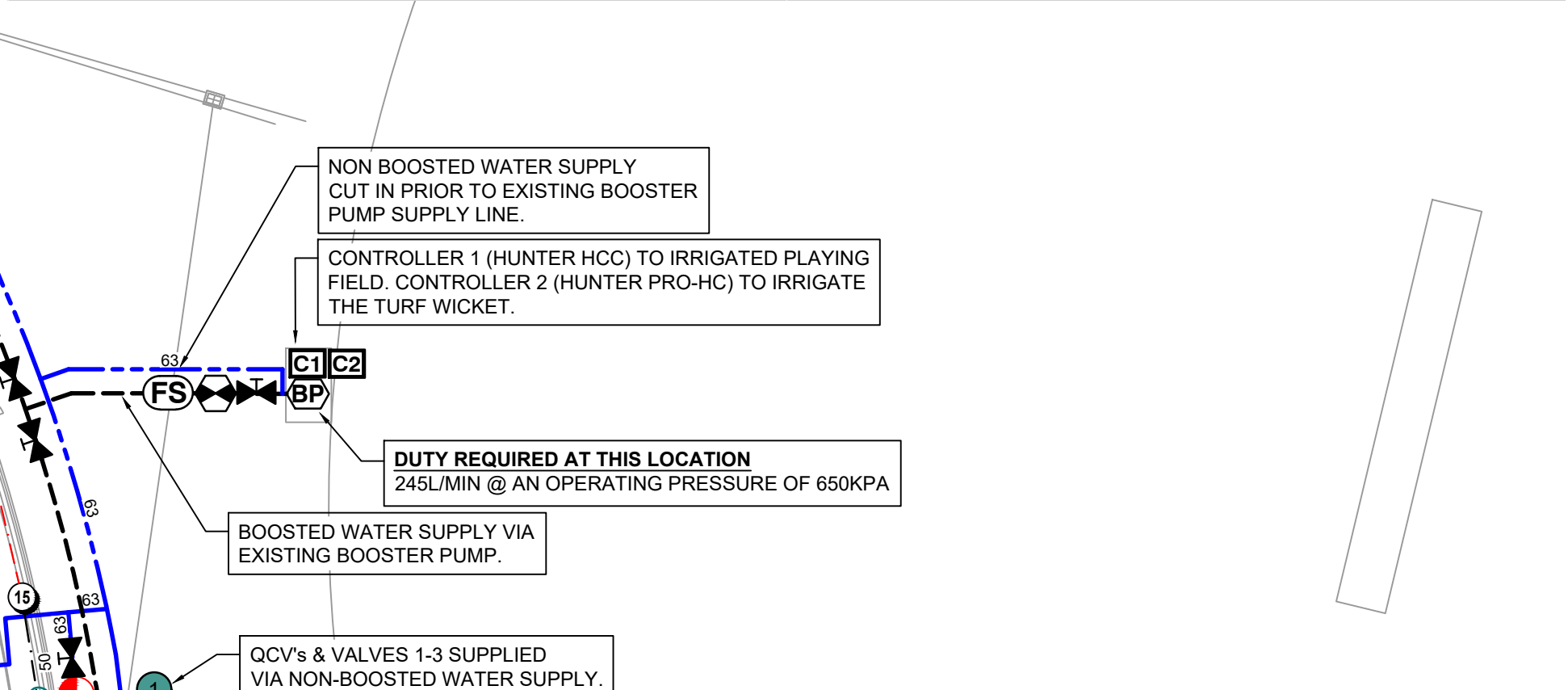
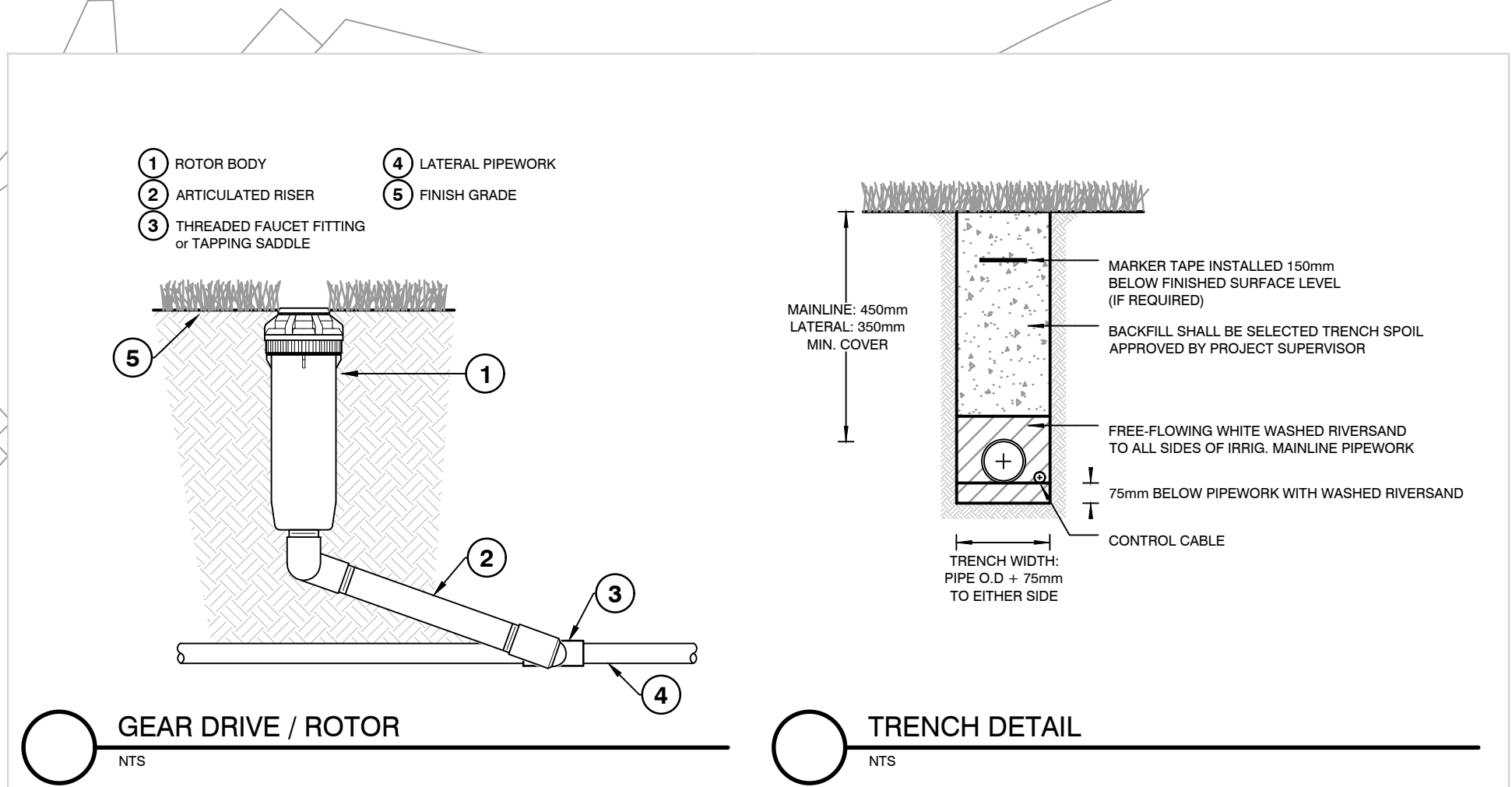
REECE IRRIGATION DESIGN

PROJECT:

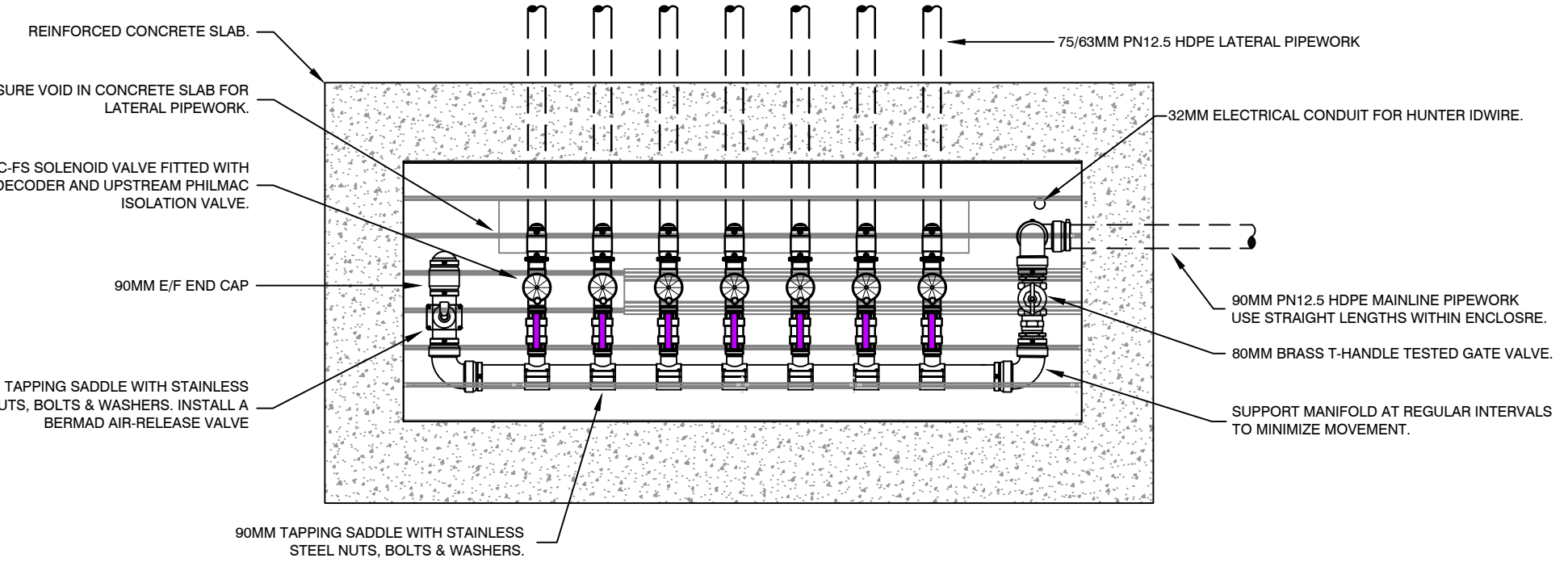
SPORTSFIELD
OVAL NO.2



REV.	D			
DRAWN: TK	C			
CHECKED: ID	B			
SHEET: IR101	A	25.11.24	FOR REVIEW DRAWING ISSUED	TK
DATE: Dec-24	REV.	DATE	DESCRIPTION	BY



QUICK COUPLING VALVE
NTS



VALVE MANIFOLD
NTS

