



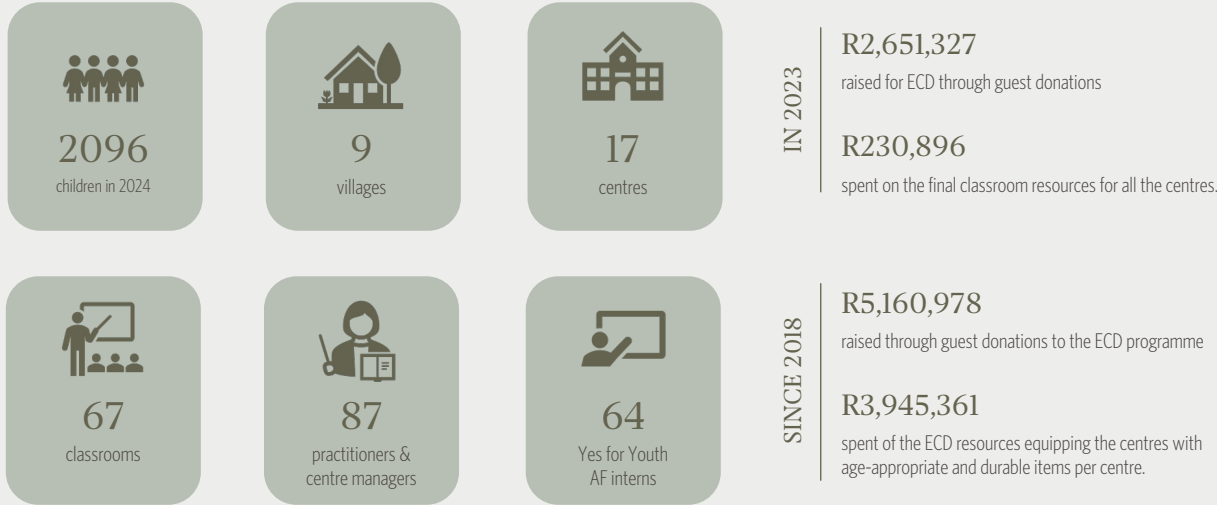
Impact Dashboard

The Singita Lowveld Trust is a non-profit organisation committed to the preservation and restoration of wilderness areas in South Africa, collaborating with communities to build healthy eco-systems in which people and nature can thrive.



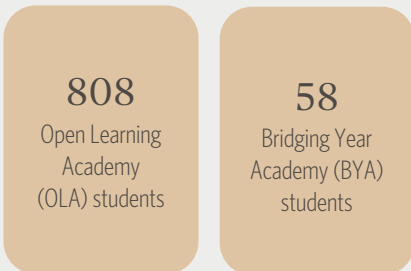
EARLY CHILDHOOD DEVELOPMENT

Since inception, we have spent **R4 million** on fully resourcing our **Good Practice ECD centres** while supporting:



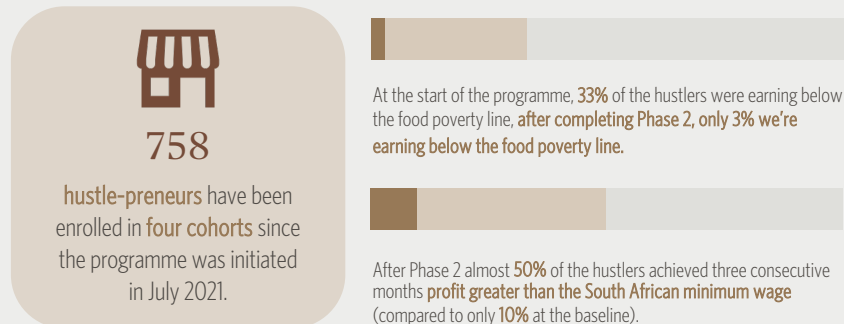
JUSTICIA DIGITAL LEARNING CAMPUS

SLT annually contributes R1,284,000 towards the operational costs of the Good Work Foundation



HUSTLE ECONOMY

SLT is an **anchor partner** in the region, contributing **R750,000** to the programme annually since 2023



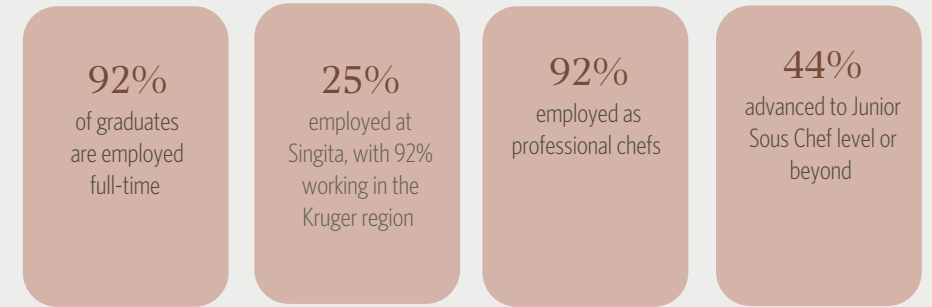
SINGITA COMMUNITY CULINARY SCHOOL



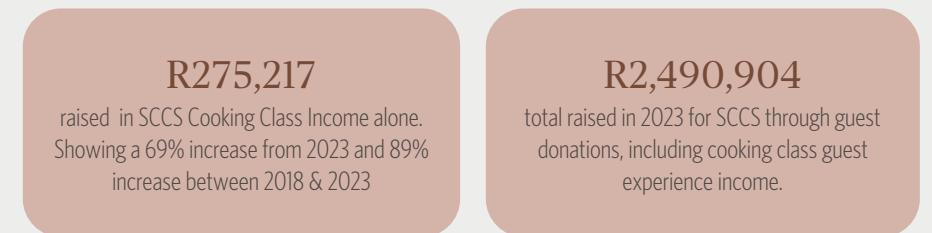
109 students from our SCCS SKNP graduates since inception with **6 new students to graduate** in 2024.

Hopefully 115 graduates through SKNP SCCS by July 2024.

Two of our Sous Chefs in our Lodge Kitchens are from our SCCS Alumni students (Marsha + Zuni)



Since 2018, **R4,812,068** has been raised through guest donations for the Singita Community Culinary School programme.



RHINO CONSERVATION

Donations raised from the Safari with Purpose dehorning guest experiences

R 5,950,000
(since 2022)

R 4,270,471
(2022)

R 1,679,608
(2023)

SKNP dehorning possible all year round EXCEPT July - August (annual census count, SKNP to confirm final dates of annual census).

PANTHERA - 2024 UPDATE

Ebony conservation room has a key focus on Panthera - (heatmaps of distributions, ranges, maternal lineages and intergenerational history and paternity data)

R 75,000

SLT provides funding support for Panthera research and monitoring.



SLT commits to covering Mavic's full care costs, including recovery, rehabilitation, and rewilding.

R533,000
Sponsorship Cost For His 3-4-year Recovery

R266,500
SLT 2023 Contributions

R336,979
Guests, Other Donors & Organisations



Mavic has achieved a remarkable milestone, crossing the 1-tonne mark, weighing an impressive 1046 kg.

ENDANGERED WILDLIFE TRUST - 2024 UPDATE

SLT continues to provide funding support EWT Large Raptor, Wildlife Poisoning Rapid Response, and Carnivore Conservation Programmes.



R150,000 support per annum

K9 ANTI-POACHING UNITS

Canine Impact:

5 Canines are in field working and able perform various duties including: patrol, tracking and apprehending suspects and detecting firearms and ammunition.

R2,1 million raised for Wildlife Protection through guest donations of that, R258,667 was raised through Canine Unit Guest Experience visits.



R1,2 million spent on APU & K9 unit support

Technology Impact:

SLT DONATED NEW EQUIPMENT:



2 sets of helmet-mounted night vision binoculars,



additional drone and upgraded Matrice drone and pilot training; this has enhanced success by improving the team's ability to detect poaching activities at night and in remote areas.



10 additional trail cameras added, bringing the total to 75; this reduced camera downtime from 10% in 2022 to 3% in 2023.

Singita 
**LOWVELD
TRUST**