

# Freedom, in any terrain!



**NEW**



## MP72 Izzarda A/T 2 For SUVs and pickup trucks

- ▶ Traction like never before
- ▶ High level of damage resistance in off-road conditions
- ▶ Significantly enhanced noise cancelling and ride comfort

Matador. A brand of Continental.

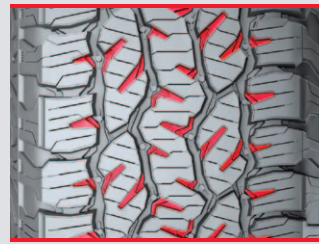
 **Matador**<sup>®</sup>



# MP72 Izzarda A/T 2

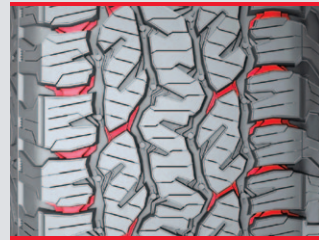
## Excellent all-terrain traction and off-road durability

### Technical Highlights



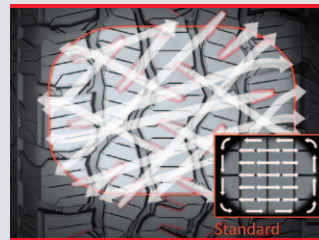
#### Traction like never before

The new multi-angle and terraced traction notches provide numerous gripping edges. This results in improved off-road traction even on loose surfaces. Alternating shoulder scoops guarantee enhanced self-cleaning action.



#### High level of damage resistance in off-road conditions

Robust tread blocks in combination with stabilized block edges reduce block pressure. This leads to outstanding resistance to block damage even under heavy load.



#### Significantly enhanced noise cancelling and ride comfort

Tread blocks with varying angles ensure a comfortable and quiet ride at all times.

### Protection Features



#### Stone bumpers

New stone bumpers with extension wings provide excellent protection against stone reflection and drilling. This reduces tyre damage from stones.



#### Sidewall lugs

Large sidewall lugs on the upper sidewall protect the tyre body from stones, rocks and debris.

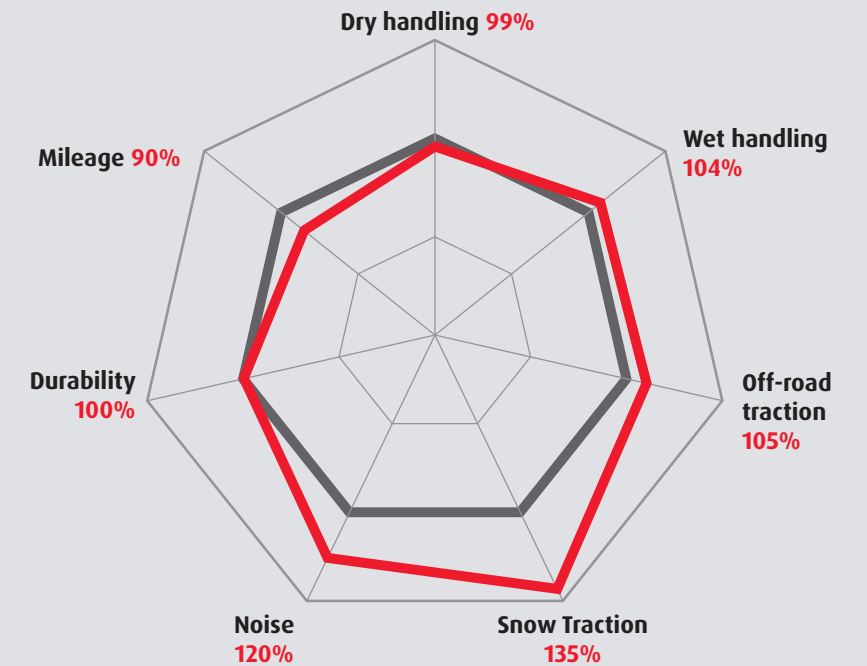


#### Rim protection rib

The rim protection rib protects the tyre and wheel bead area from damage caused by curbstone and off-road obstacles.

### Performance Diagram

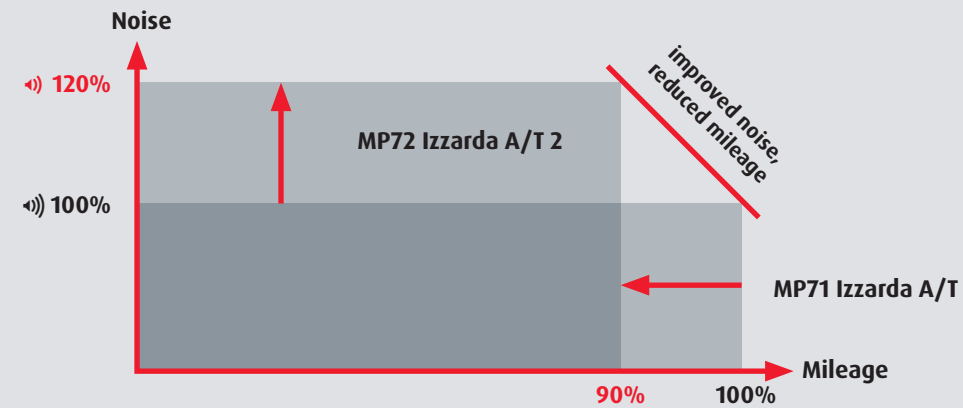
— MP72 Izzarda A/T 2  
— MP71 Izzarda = 100%



### Graph № 1

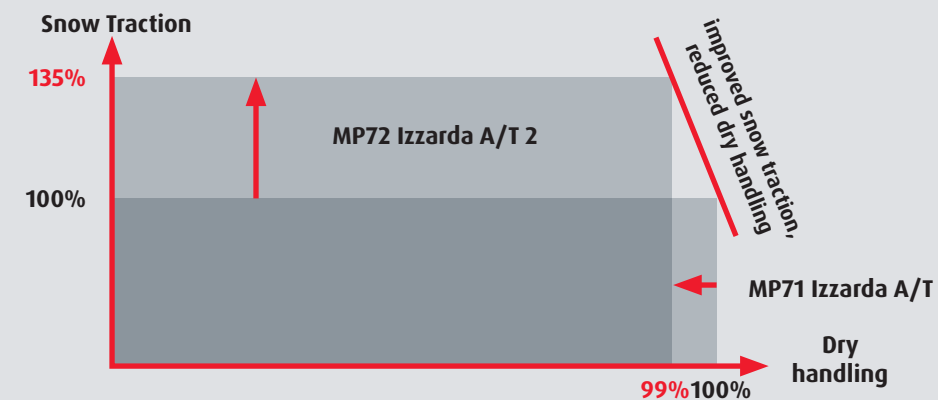
#### Obligatory changes to comply with noise legislation have reduced mileage, but tyres are still highly competitive.

Note: According to the regulation UNECE R117-02, the tires with 3 sound waves that are produced after November 2016 will not be allowed to be sold in countries using EU label.



### Graph № 2

#### Achieving a significant improvement in traction even on snowy roads leads to slight drop in dry handling performance.

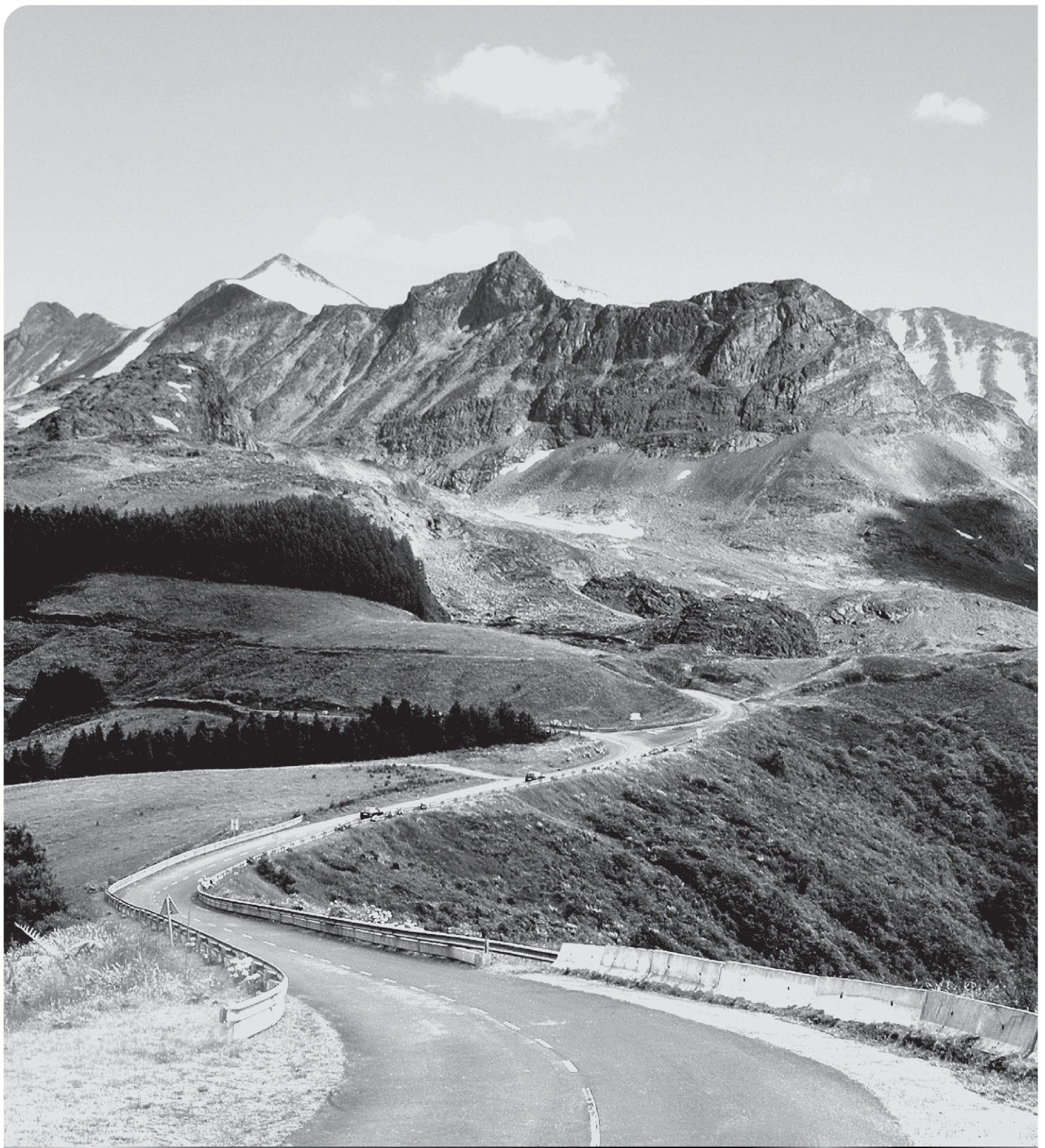


### Size Range

Size	LI	SI	EU tyre label			
			Fuel consumption	Wet grip	dB	Class
<b>15"</b>						
205/70 R15	96	T	F	E	72	2
235/75 R15 XL	109	T	F	E	72	2
31X10.50 R15LT LRC	109	S	to be released			
<b>16"</b>						
205/80 R16 XL	104	T	E	E	72	2
215/65 R16	98	H	F	E	72	2
215/70 R16	100	T	F	E	72	2
225/75 R16	103	H	E	E	72	2
225/75 R16 XL	108	H	E	E	72	2
235/70 R16	106	H	F	E	72	2
245/70 R16 XL	111	H	E	E	72	2
255/65 R16	109	H	F	E	73	2
255/70 R16	111	T	F	E	73	2
265/70 R16	112	T	to be released			
205 R16C	110/108	S	to be released			
<b>17"</b>						
215/60 R17	96	H	F	E	72	2
225/65 R17	102	H	F	E	72	2
235/65 R17 XL	108	H	E	E	72	2
255/65 R17	110	H	E	E	73	2
265/65 R17	112	H	E	E	73	2
<b>18-20"</b>						
265/60 R18	110	H	to be released			
255/55 R19 XL	111	H	F	E	73	2
275/40 R20 XL	106	H	to be released			

XL = EXTRA LOAD - tyre with increased loadability | LI = Load index | SI = Speed index | EU tyre label categories: F = Fuel consumption, E = Wet grip, dB = Value in decibels, Class = Class | • = Rim protection  
\* available in Q1 2017





Your tyre specialist:

[www.matador-tyres.com](http://www.matador-tyres.com)

Matador. A brand of Continental.

 **Matador**<sup>®</sup>