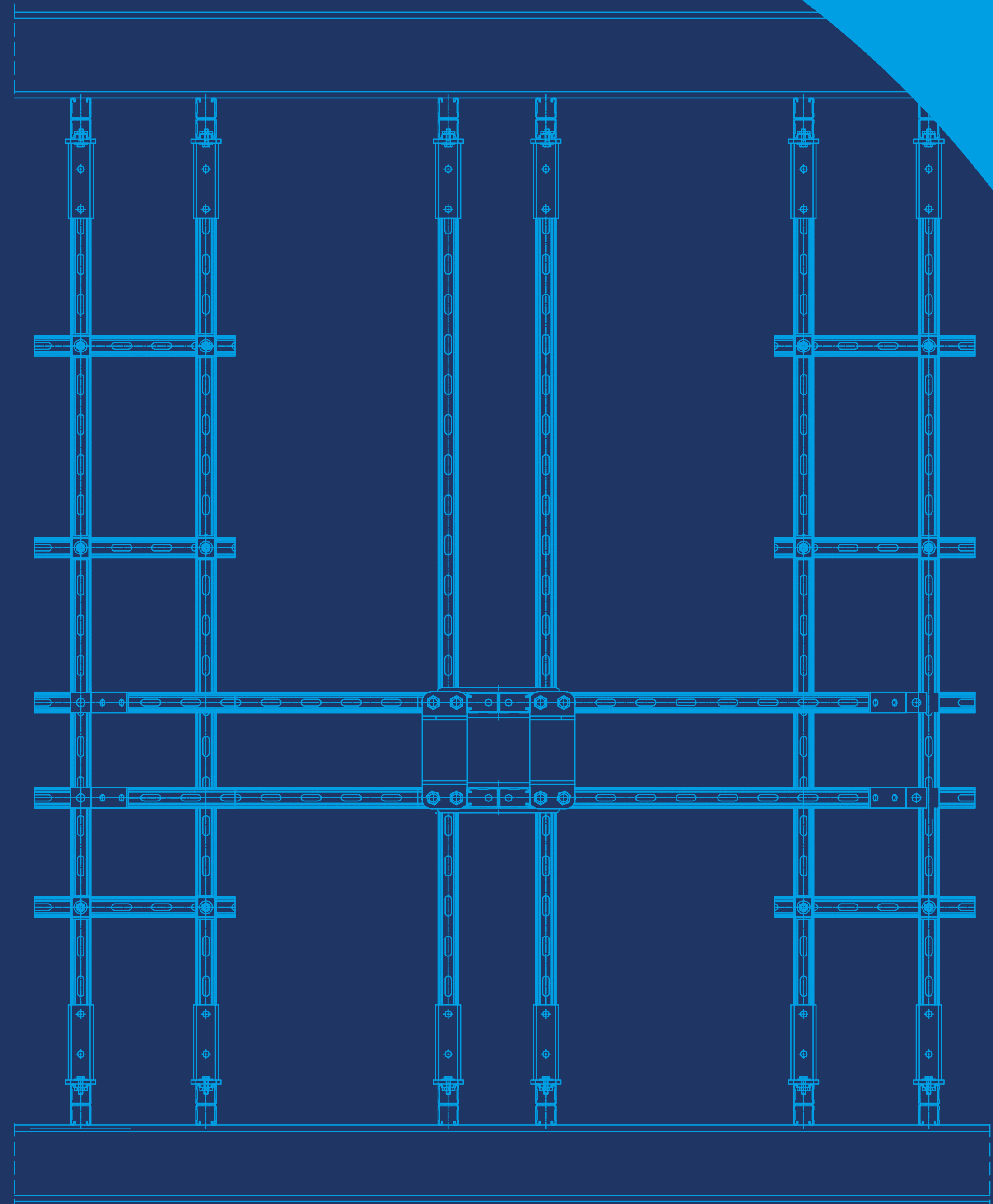




HIGH
QUALITY
HVAC
PRODUCTS

Manual: Assembly guidelines.

niczuk.eu



We are the leader.

The company **THALE Sp. z o.o. Sp. k.** is the owner of the **NICZUK** brand, whose tradition dates back to 1957.

As a leader on the fastening market, we care for our clients by providing high quality products. Our experienced engineers provide technical advice and design support.

We know that for most customers, the factor which determines the choice of a partner in an investment is fast and efficient order processing.





Assembly guidelines.

We have created this manual to make the work of the installers easier. Tips included in descriptions and diagrams eliminate the additional costs resulting from assembly errors and ensure high quality of project implementation.

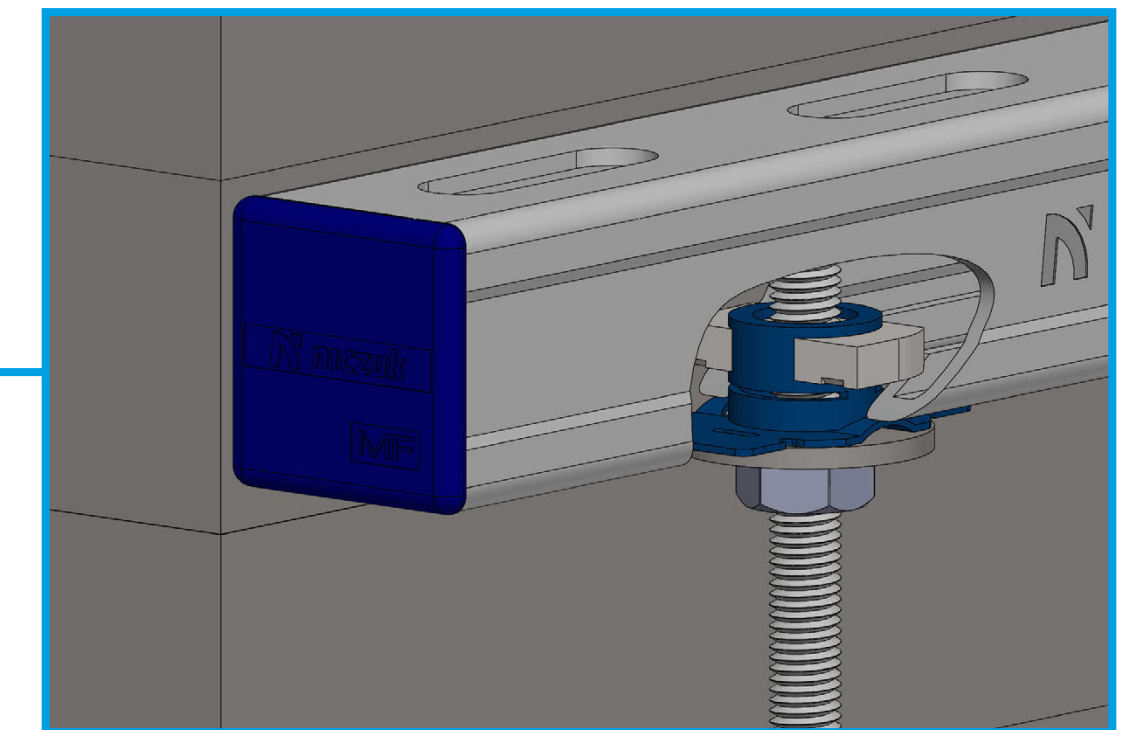
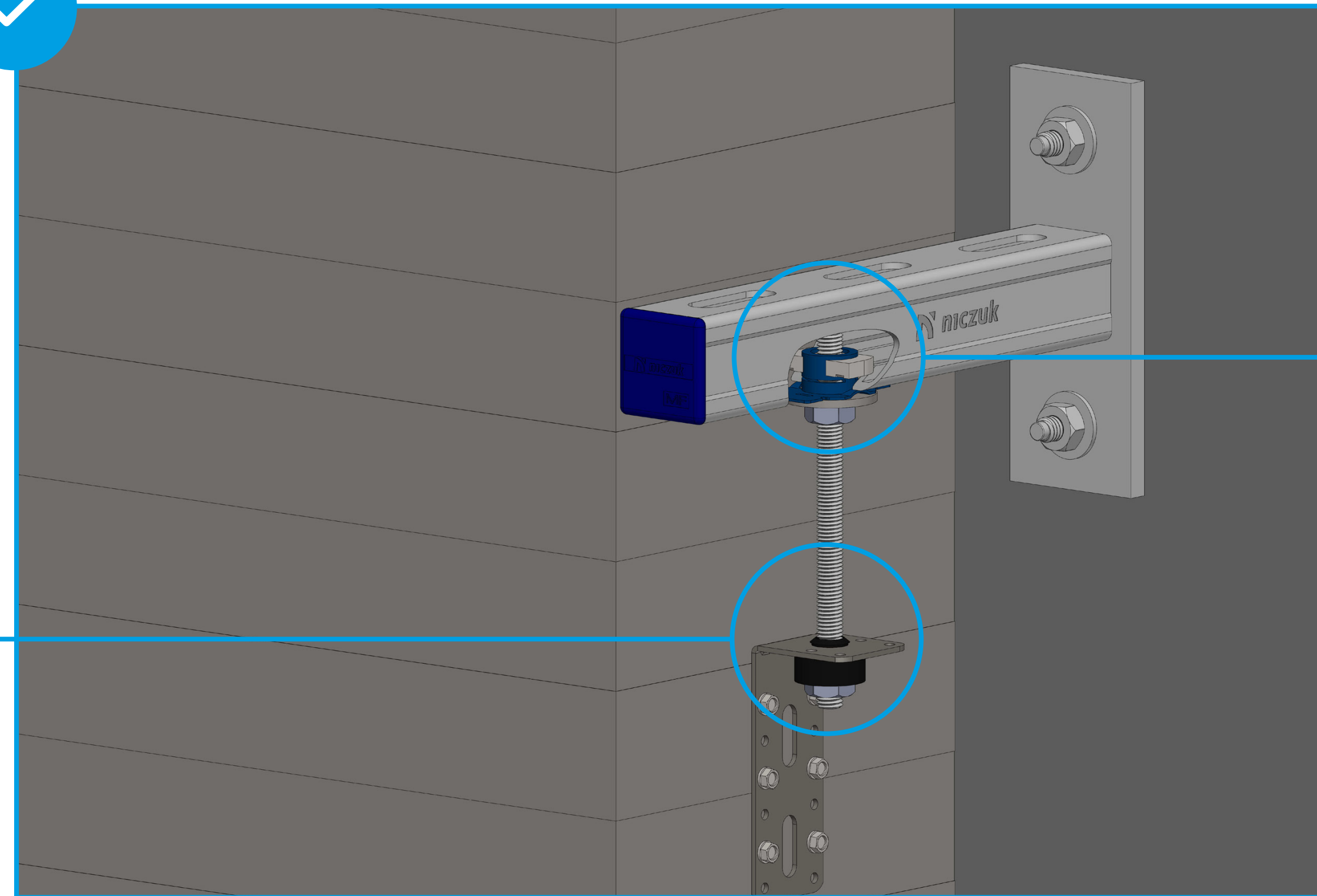
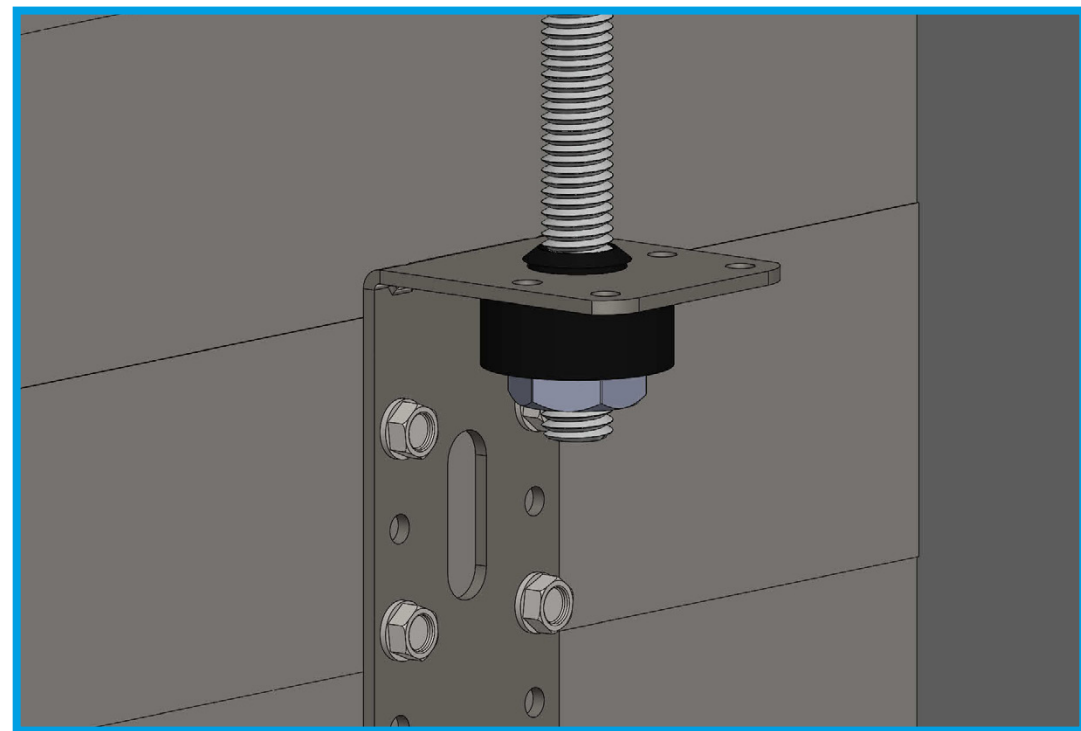
Table of contents:

1. Installation of L-type fasteners
2. Anchoring principles
3. Types of fasteners
4. Installation principles
5. Selection of assembly profiles
6. Installation of fixed points
7. Installation of cold clamps
8. Selection of roof supports
9. Installation of sliding supports



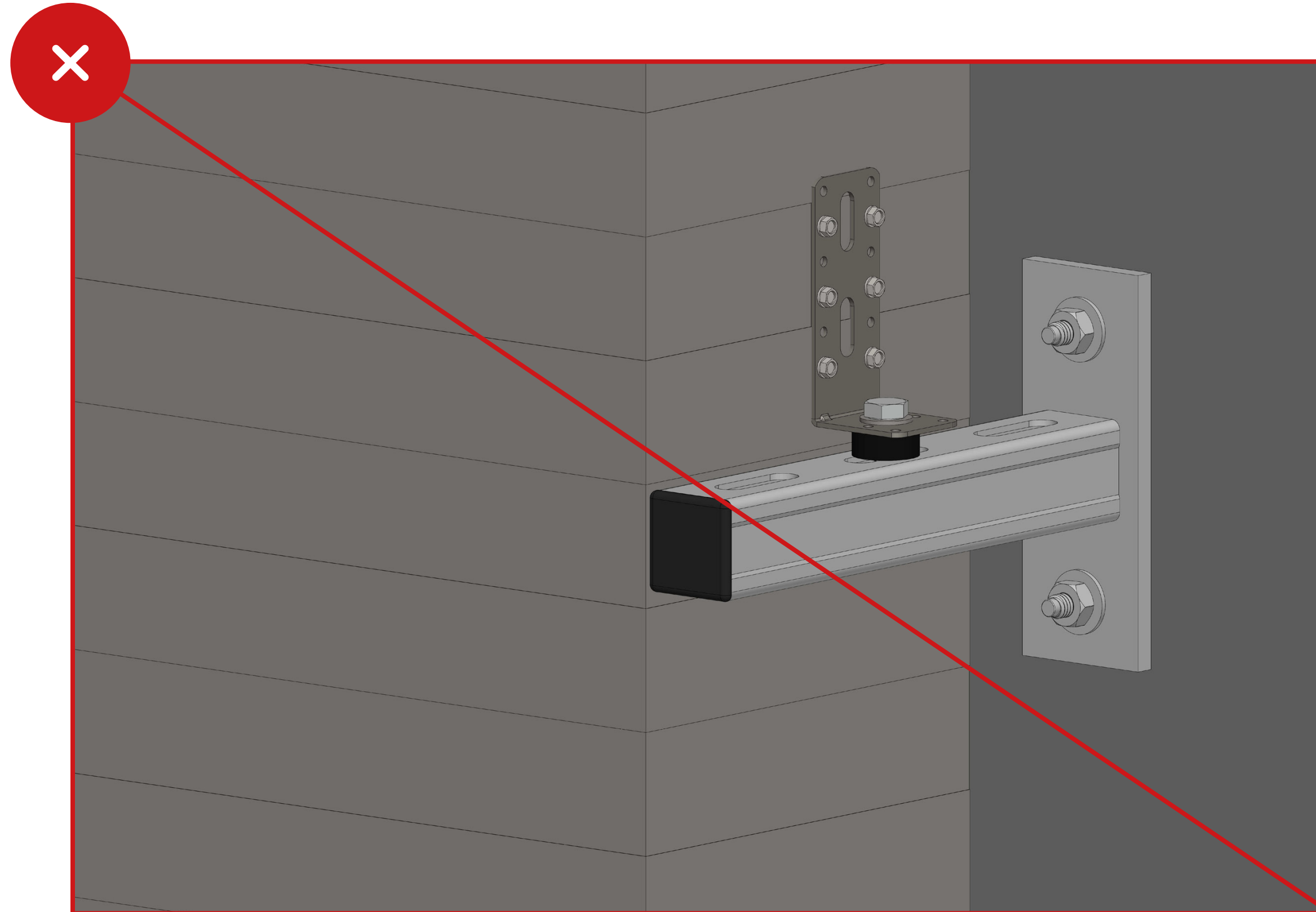
1. Installation of L-type fasteners.

Pay attention to the correct position of the shock absorber, which will ensure suppression of vibrations.



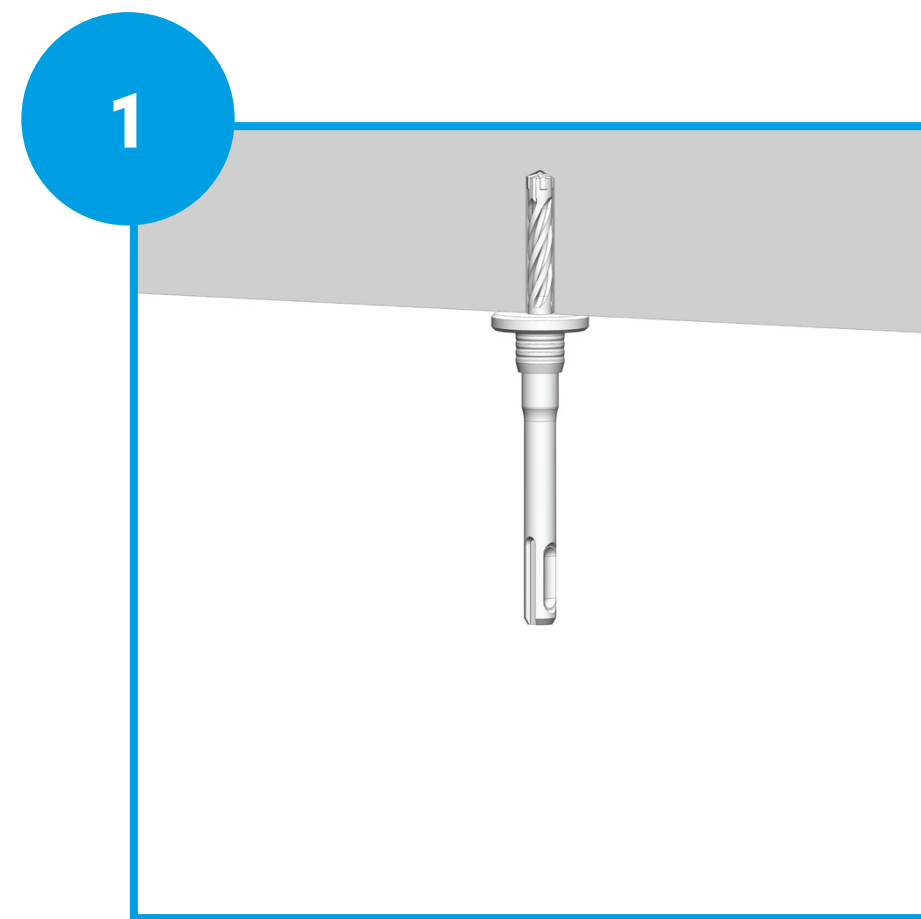
1. Incorrect mounting of the fastening.

The reverse position of the shock absorber will not eliminate vibrations.

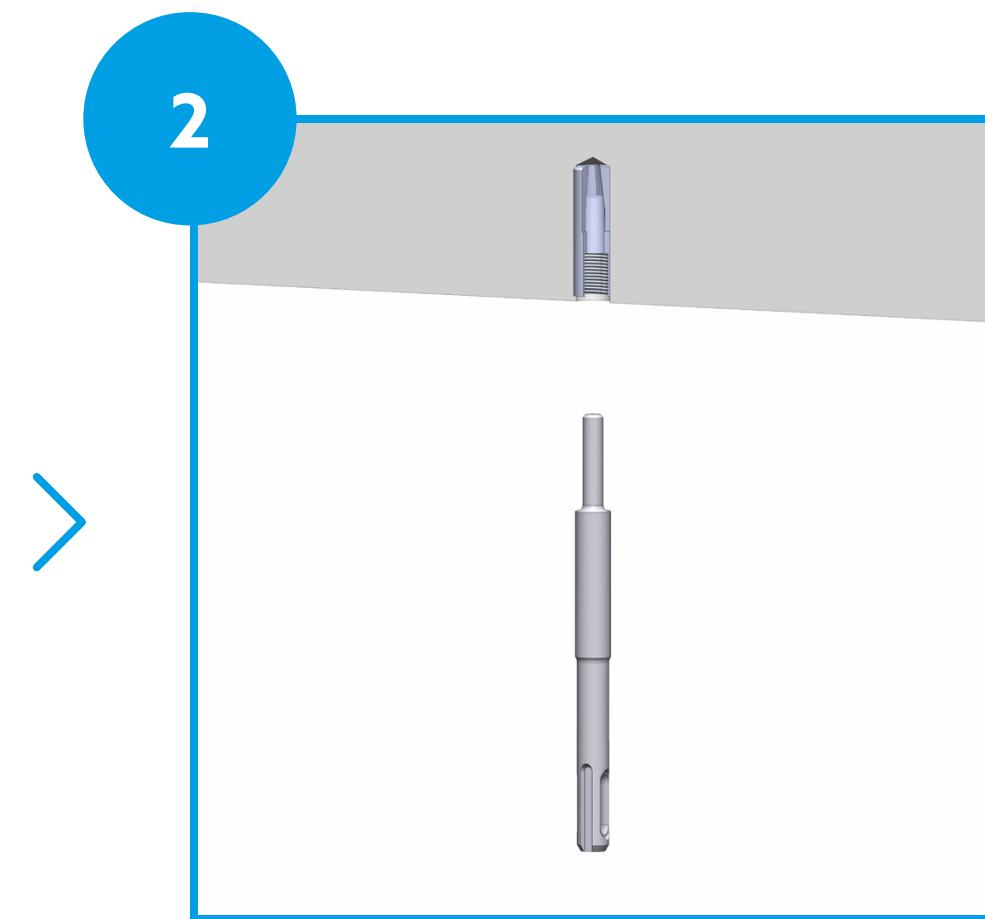


2. Correct anchoring.

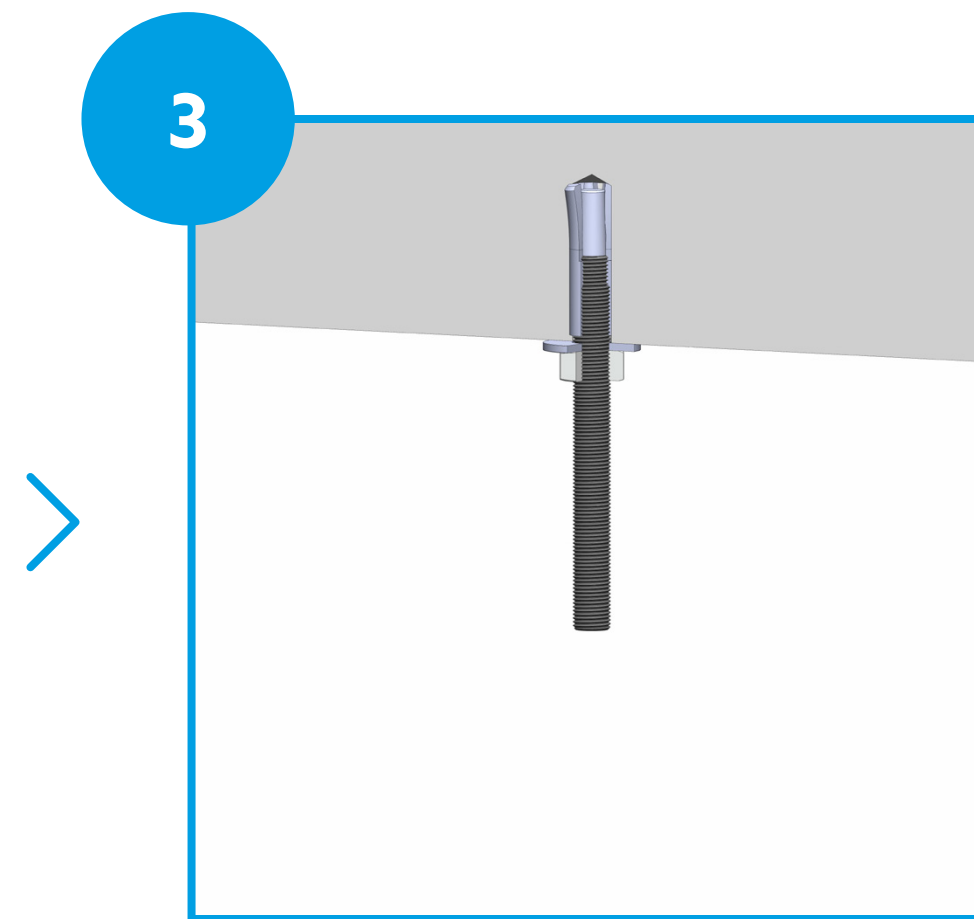
For proper anchoring, use a drop in anchor setting tool or ON BLUE drop in anchor setting tool (with protective collar), which will open and seize the anchor.



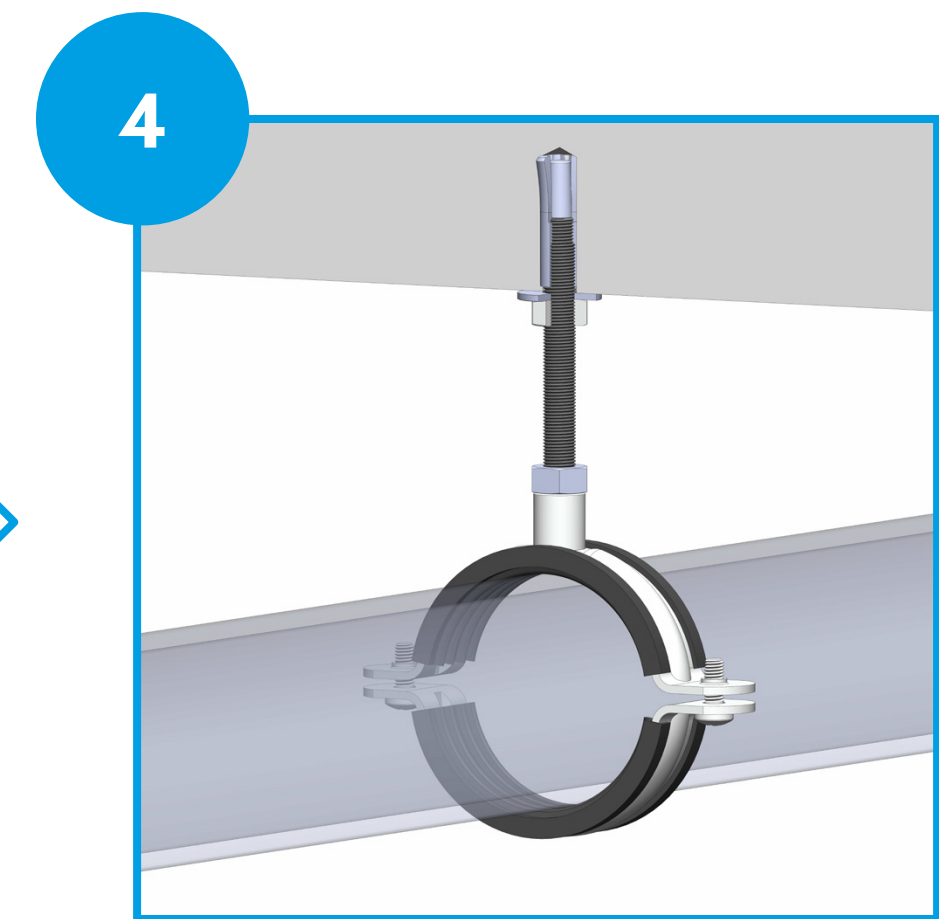
Drilling



Anchor wedging



Screwing the rod



Installation assembly

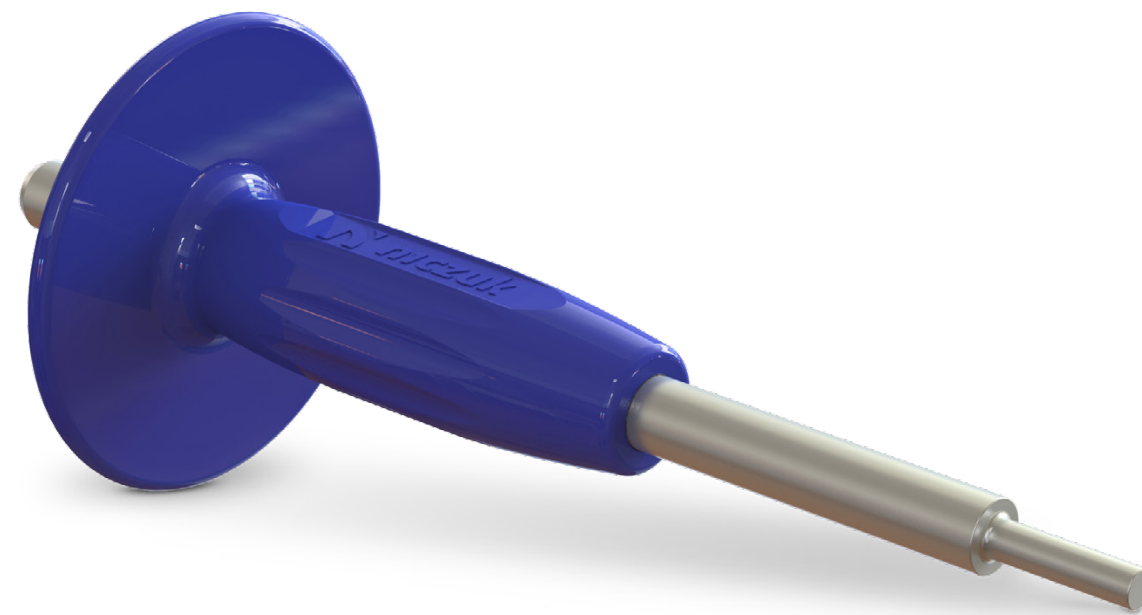
3. Recommended drop in anchor setting tools.

Thanks to the use drop in anchor setting tools you do not need to worry about hand injuries when installing the expansion sleeves.

Drop in anchor setting tools ensure:

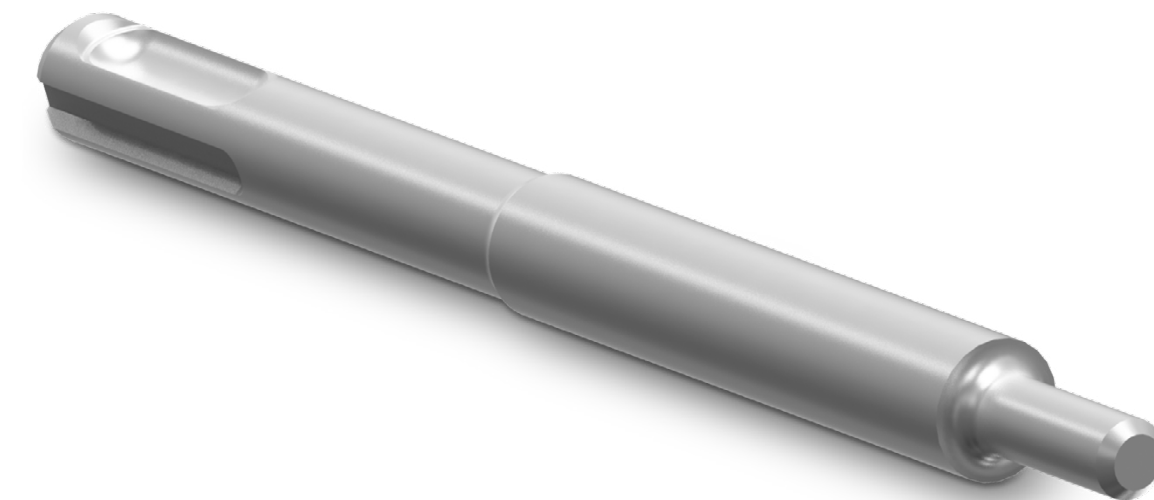
- safe and quick manual or mechanical assembly of steel anchors
- correct size of sleeve according to drop in anchor used
- greater control over the impact force

ON BLUE.



Application: for correct manual assembly of a steel expansion anchor - internal threaded sleeve; has an ergonomic handle for a comfortable grip. A protective collar around the handle protects against injury during assembly. Available fixing pins are adapted to the size of the anchor being fixed.

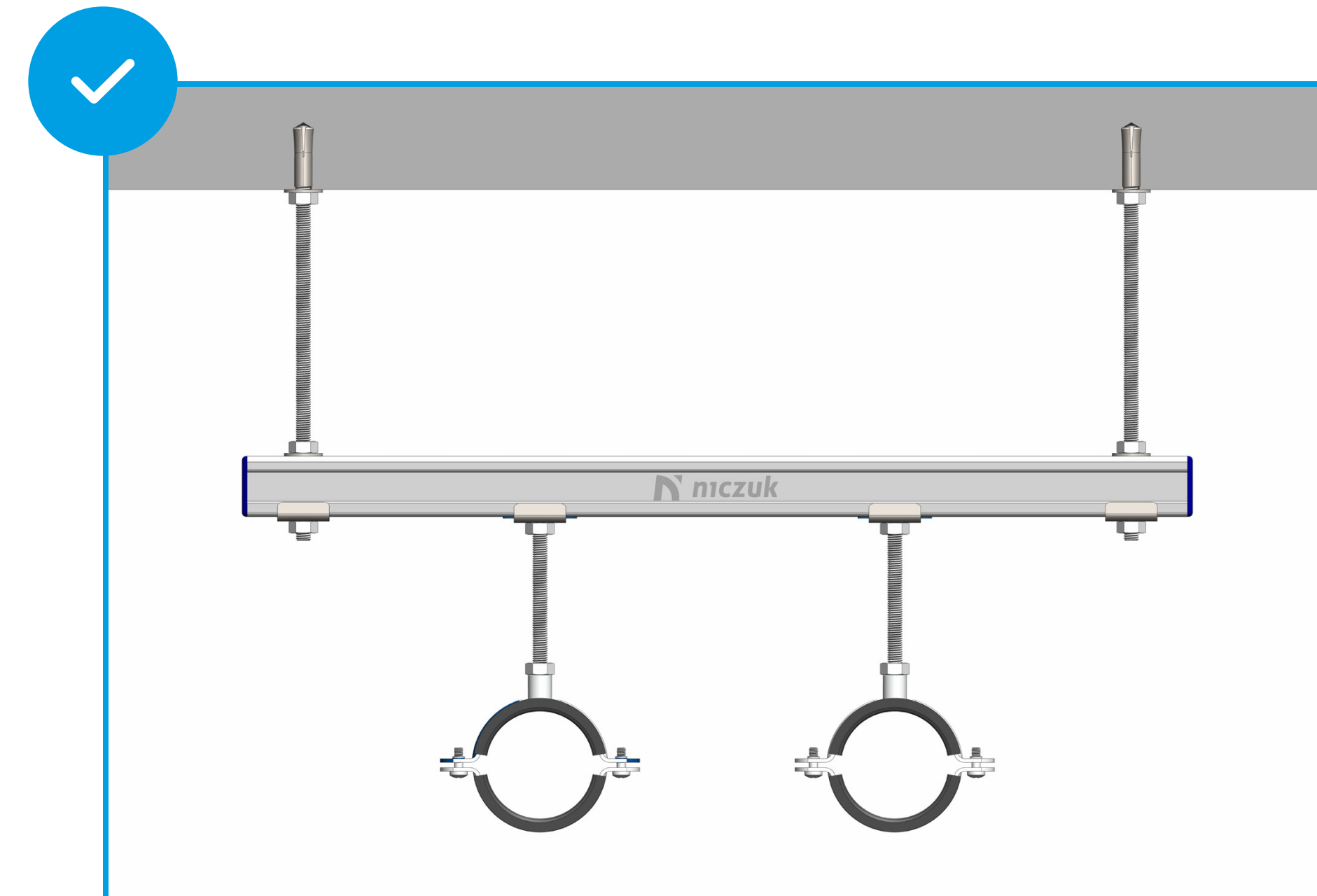
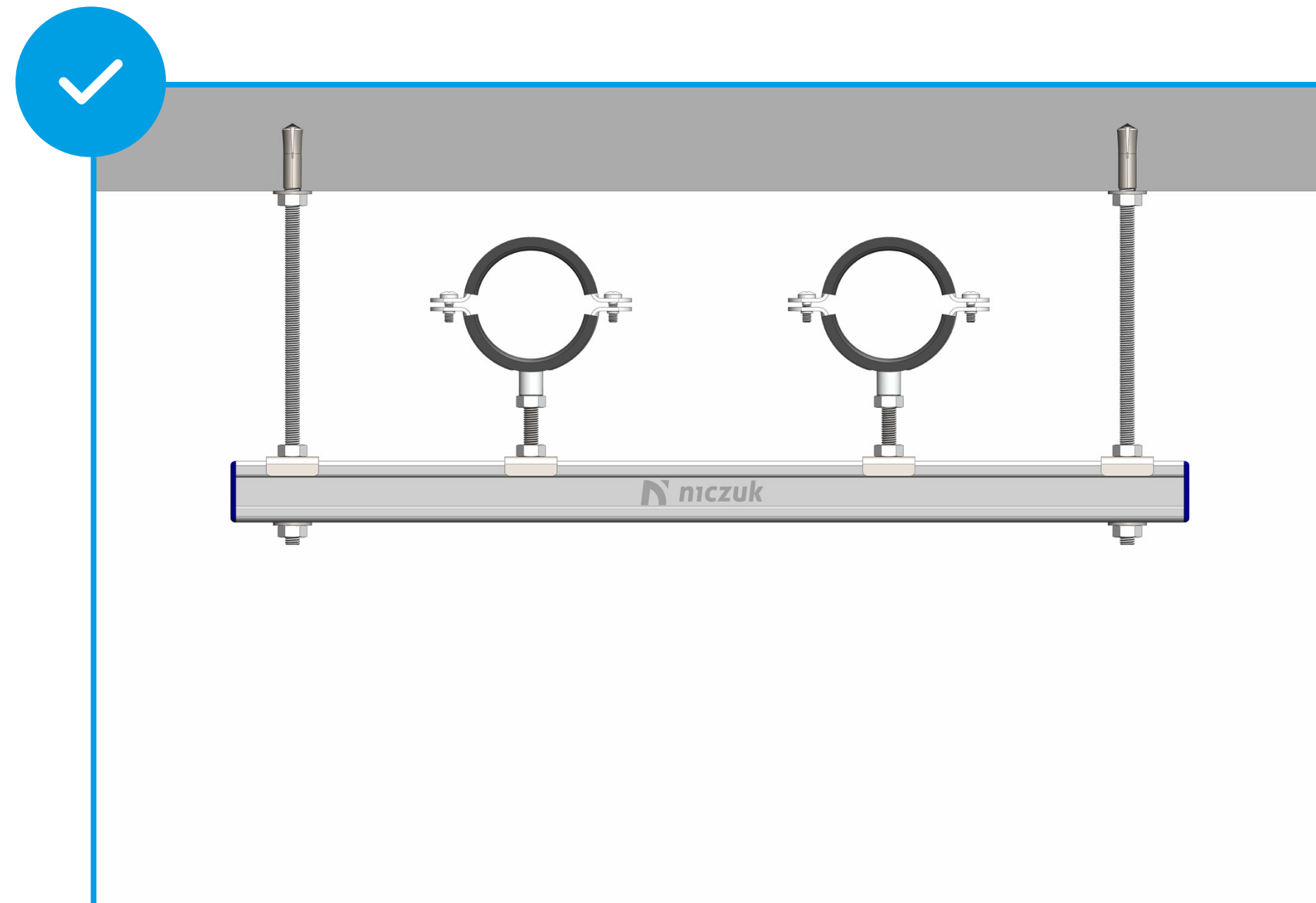
OM.



Application: tool for mechanical and serial installation of anchors. The SDS tip enables the use of professional hammer drill and ensures effortless and quick assembly. The size of sleeve is selected to match the size of the anchor being fixed. For use with the WOGW drill bit.

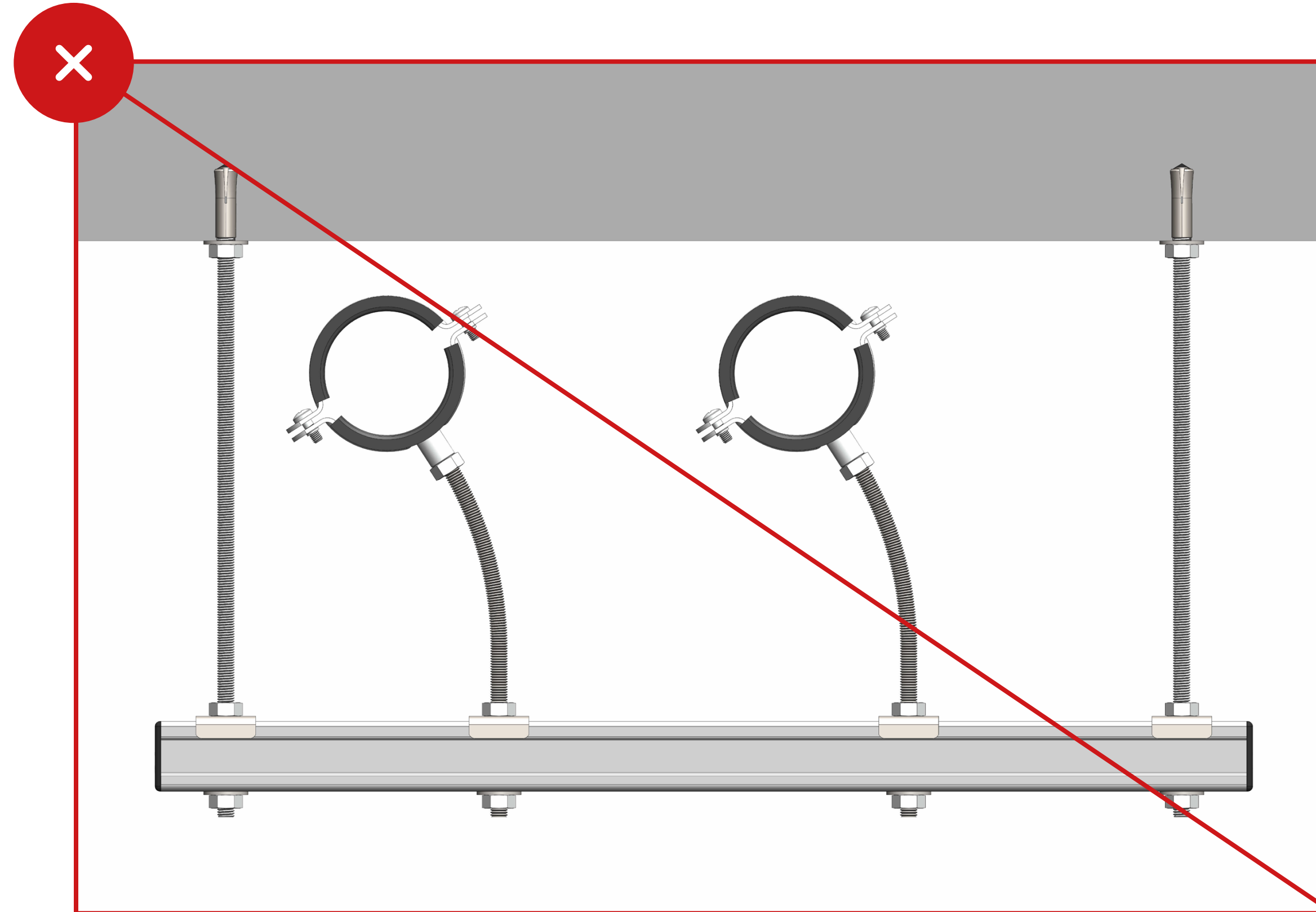
4. Correct installation of the assembly.

When installing the pipeline over the profile, pay attention to the appropriate section and length of the rods. User safety relies on it. When mounting under the profile, it is possible to use longer rods.



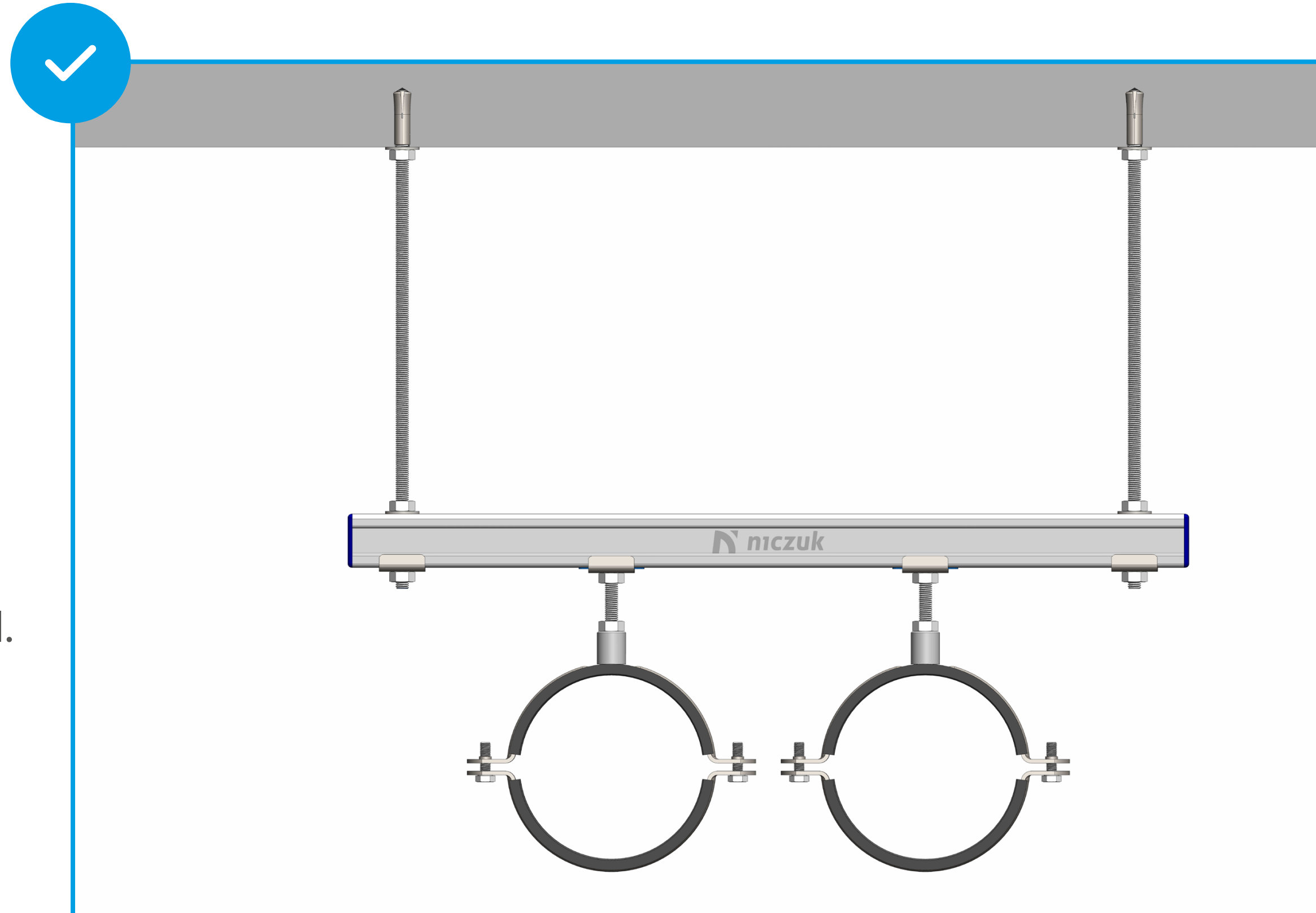
4. Incorrect installation of the assembly.

The use of a threaded rods that is too long can cause it to bend and change the position of the installation.



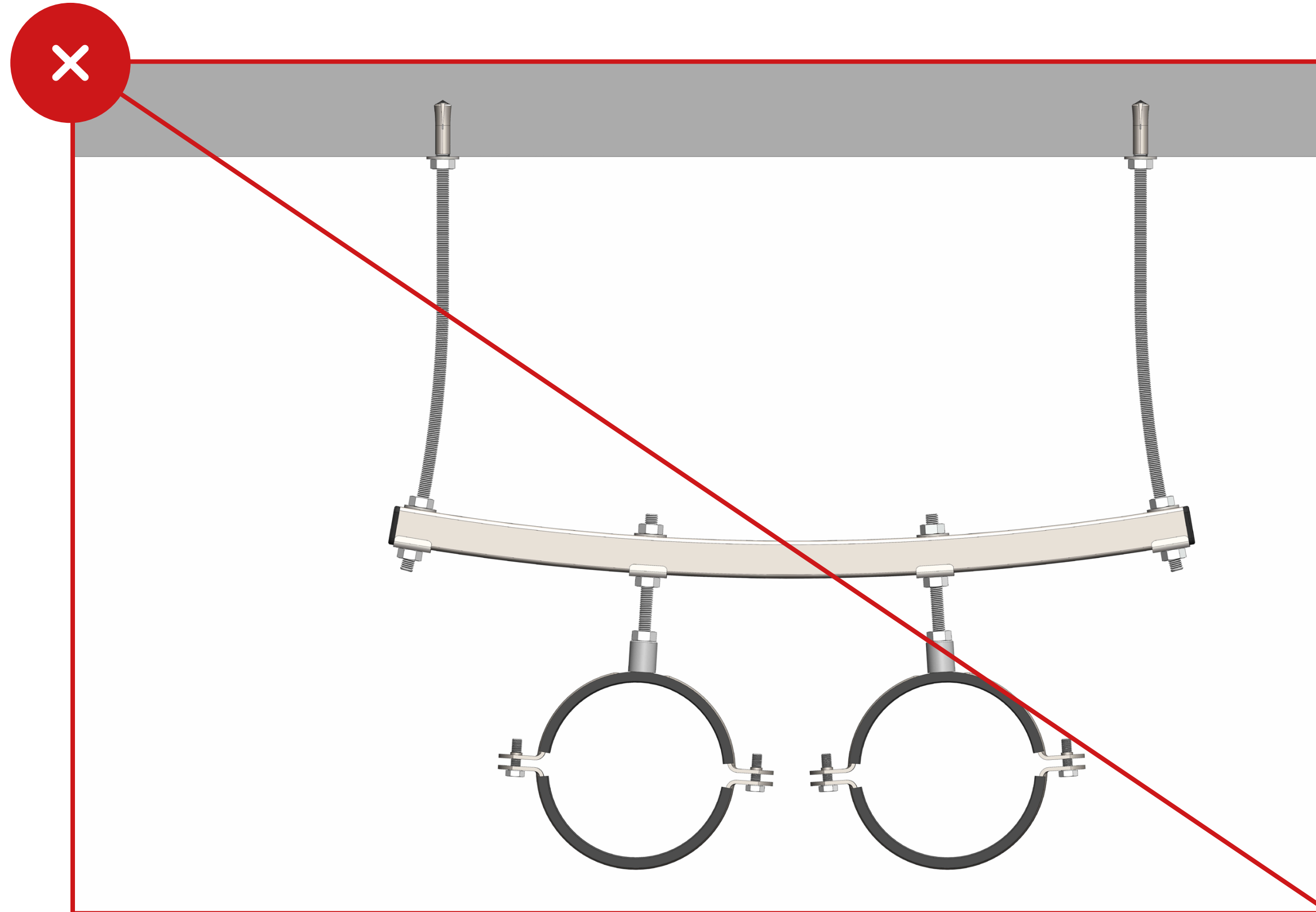
5. Correct selection of assembly profiles.

For the correct selection of the profile, use the mounting profiles load capacity table, Belka app. or ask for help from a technical advisor - contact details at the end of the manual.



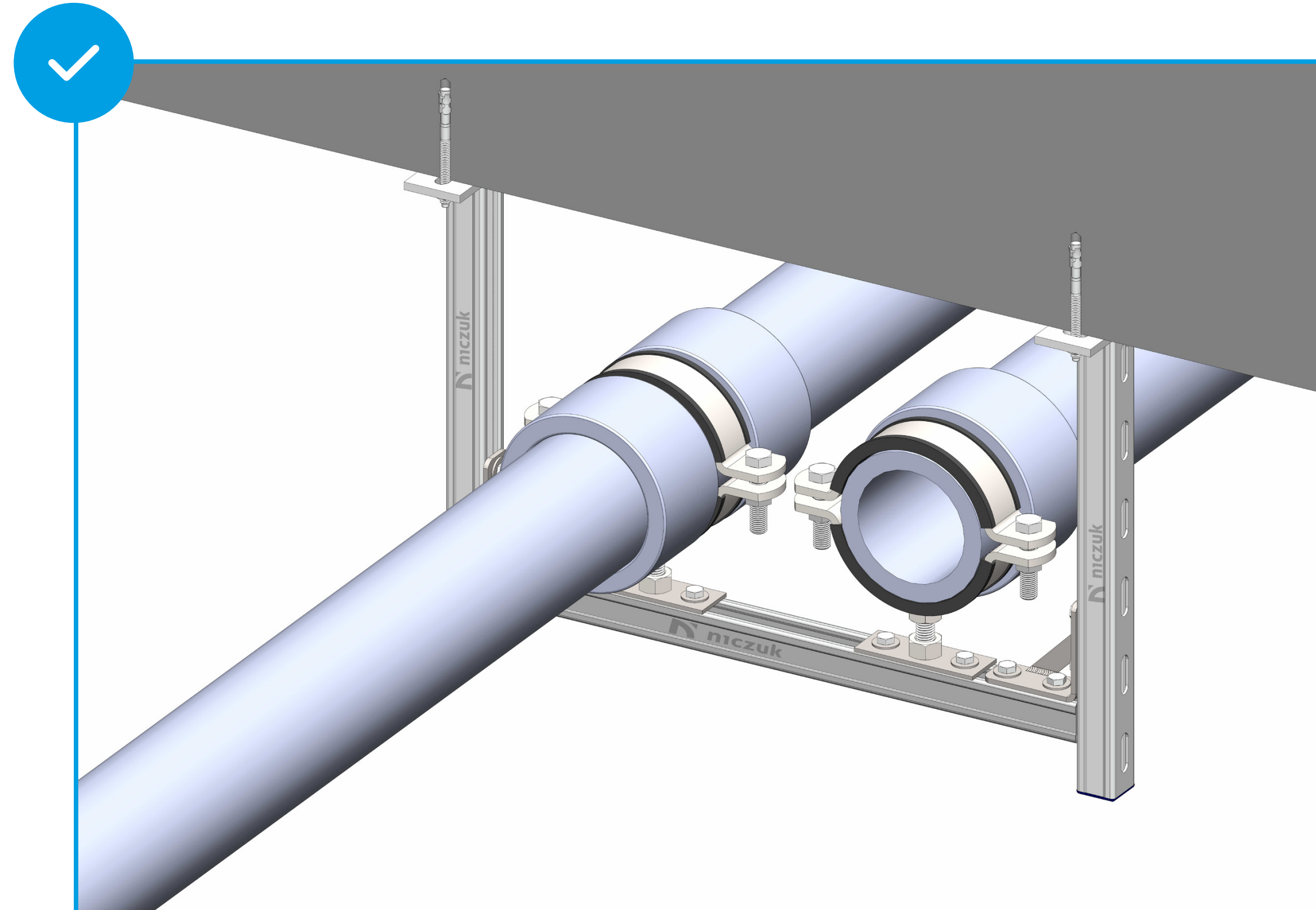
5. Incorrect selection of assembly profiles.

Too high a load will cause deflection of the profile, which poses a danger while in normal use.



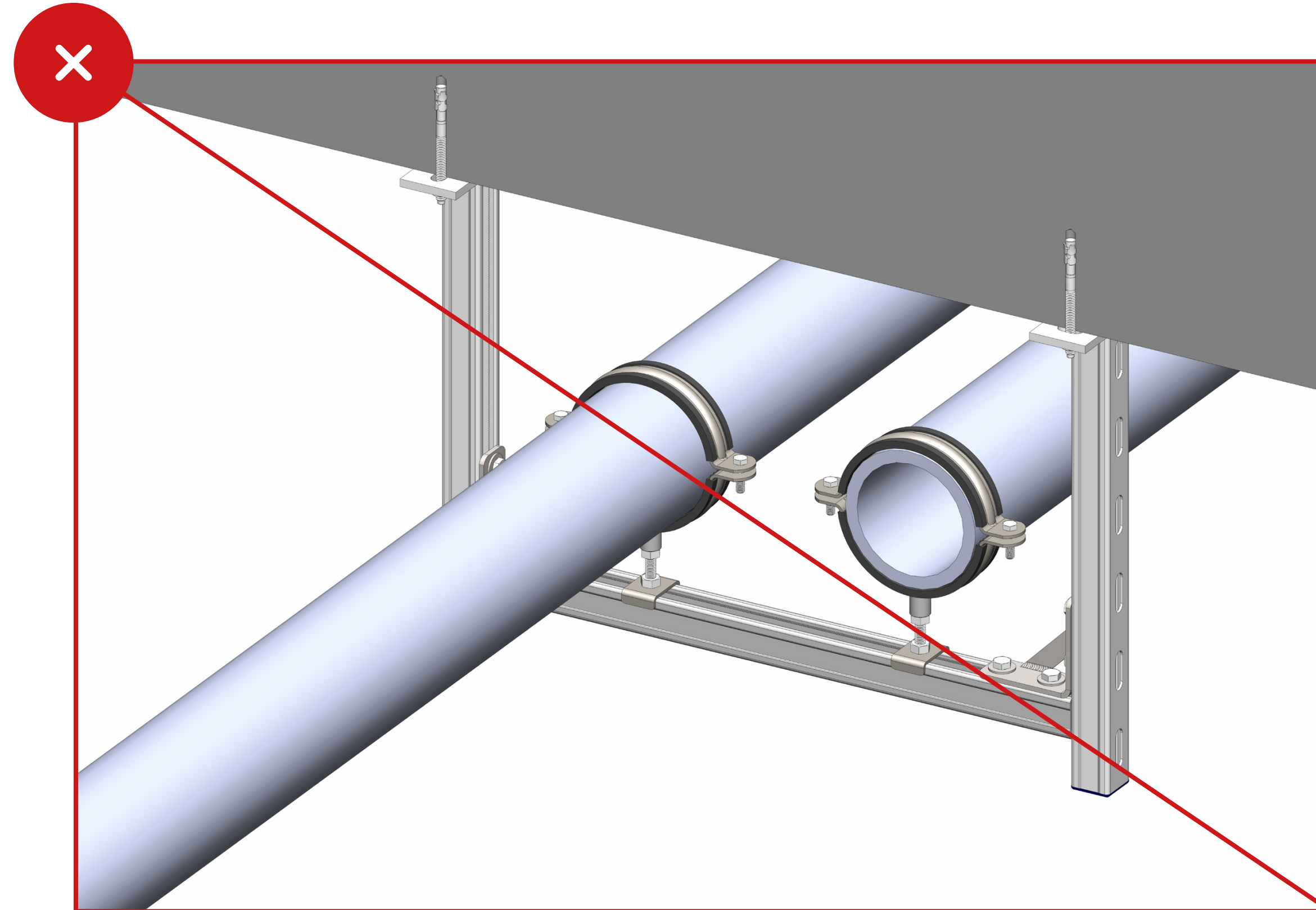
6. Correct installation of fixed points.

Fixed points should be mounted between fittings.



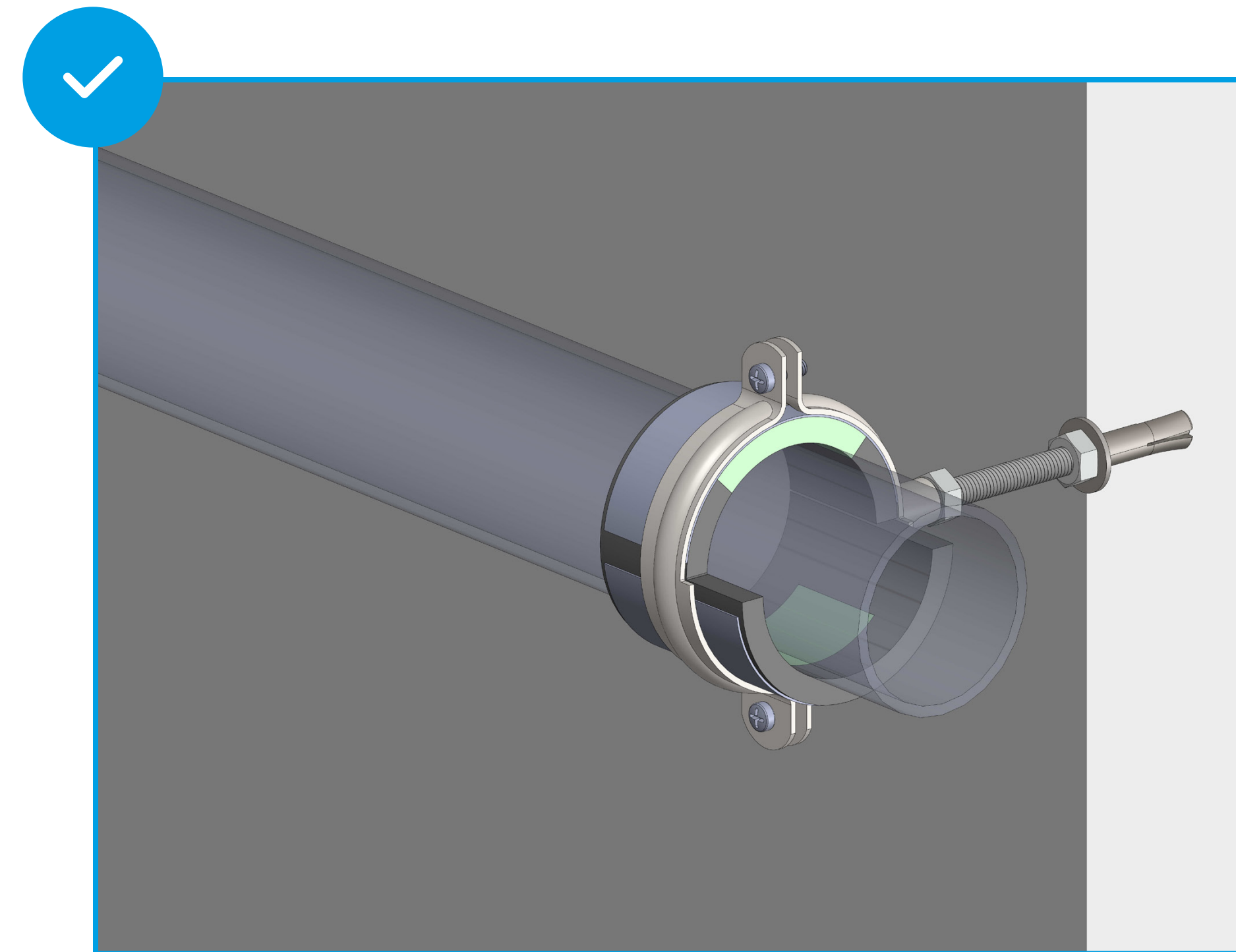
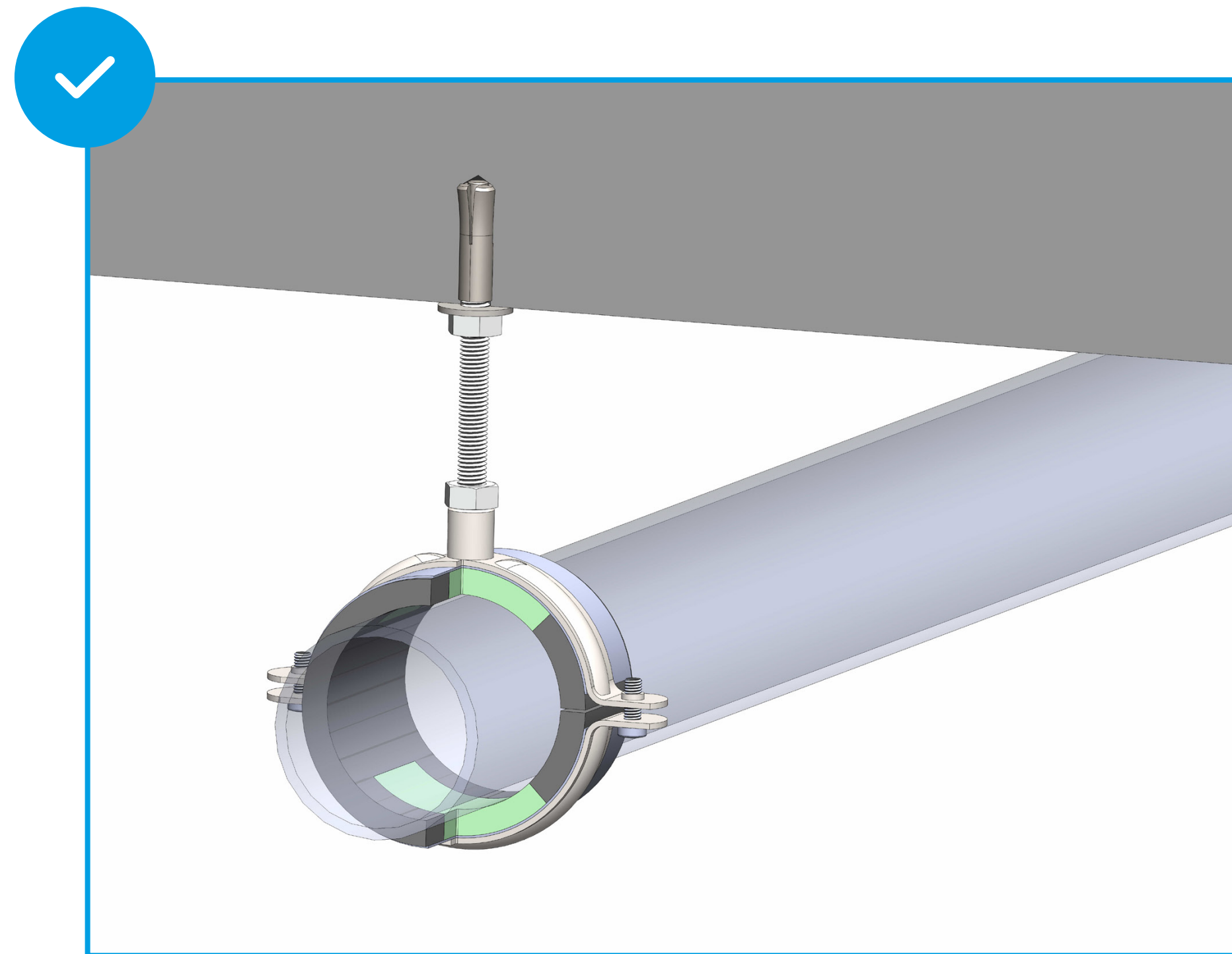
6. Incorrect installation of fixed points.

The installation of a fixed point on a plastic pipe should ensure the installation will not undergo displacement.



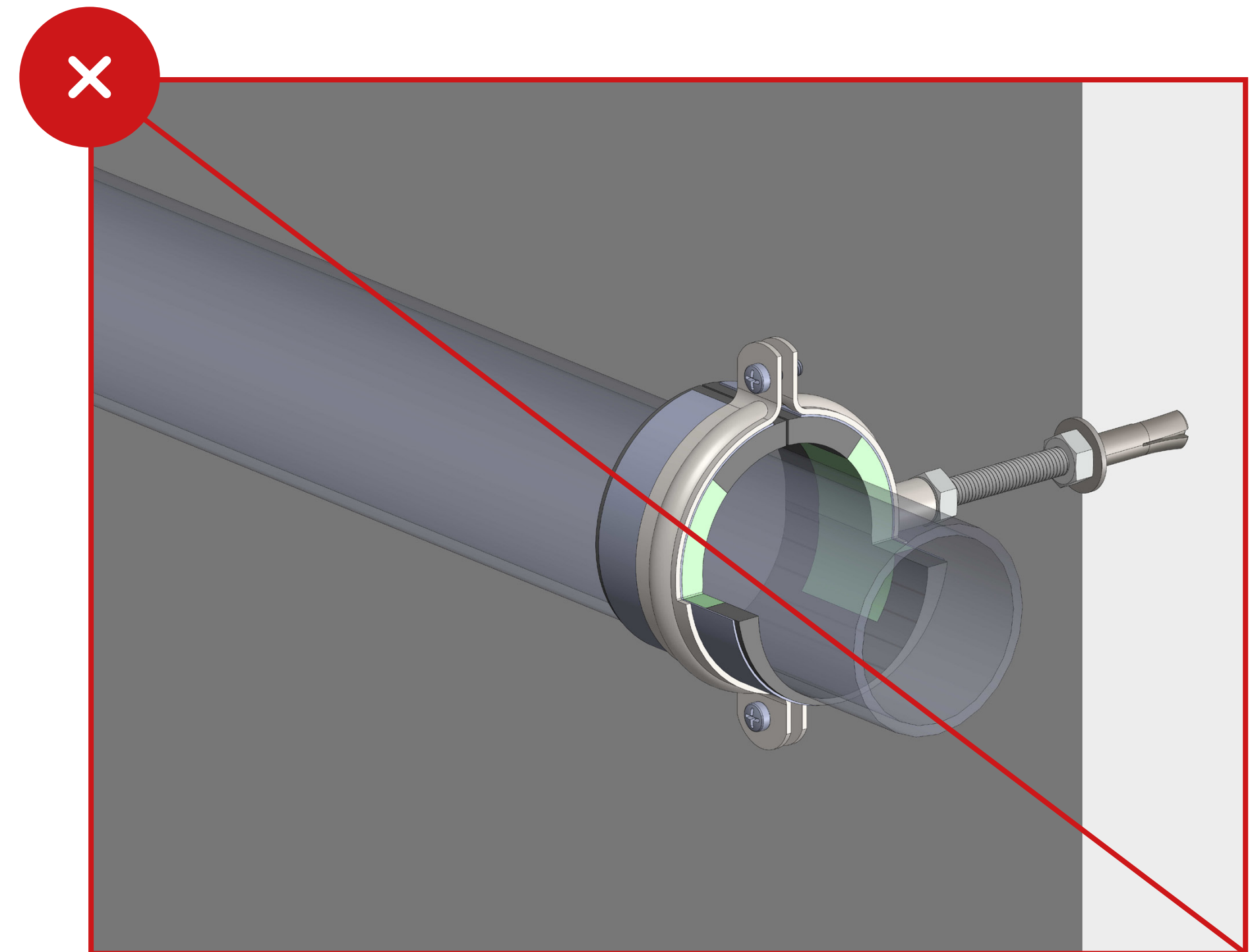
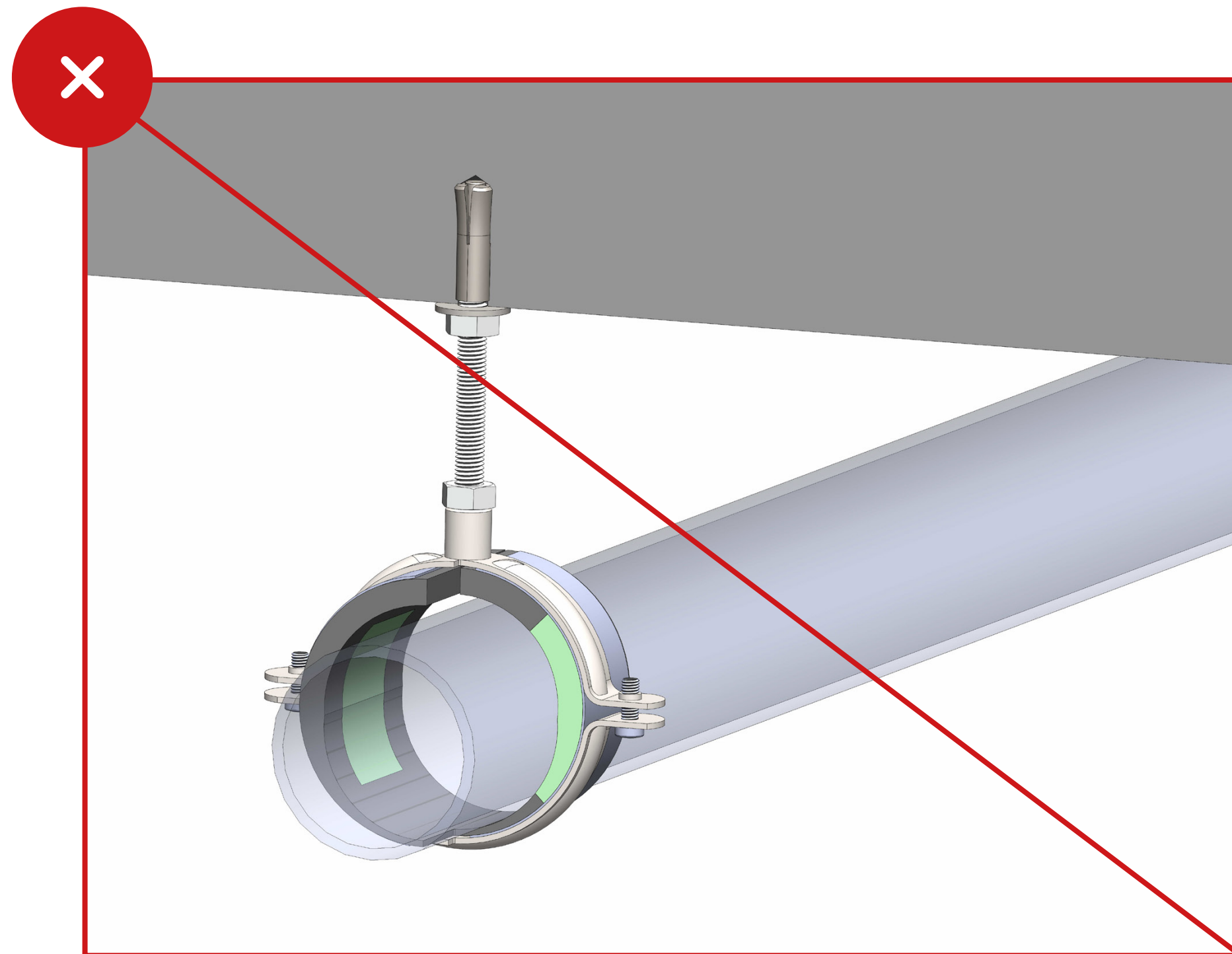
7. Correct installation of the cold clamps.

Install the thermal insulation clamps in such a way that the rigid part of the insulation insert carries the weight of the pipe.



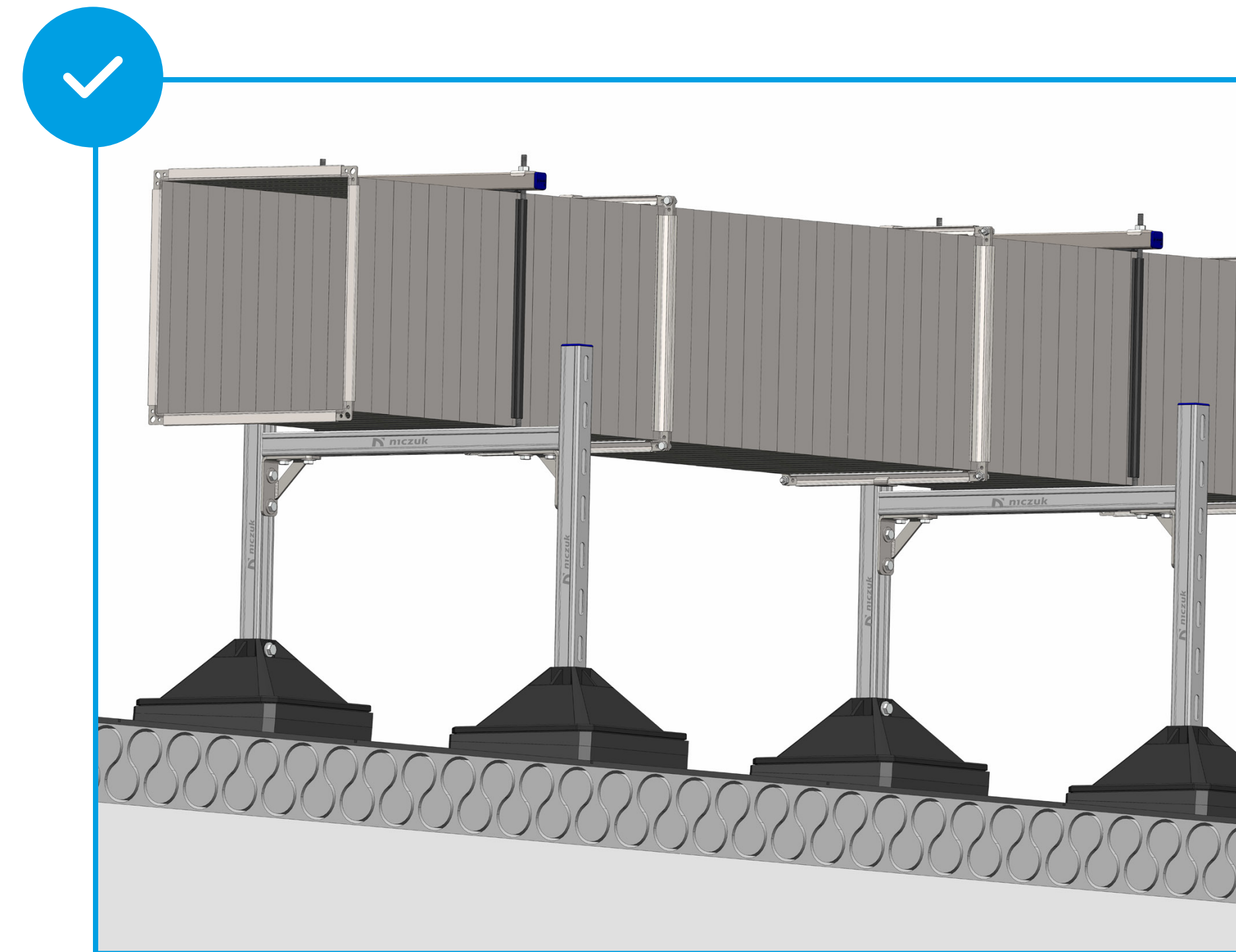
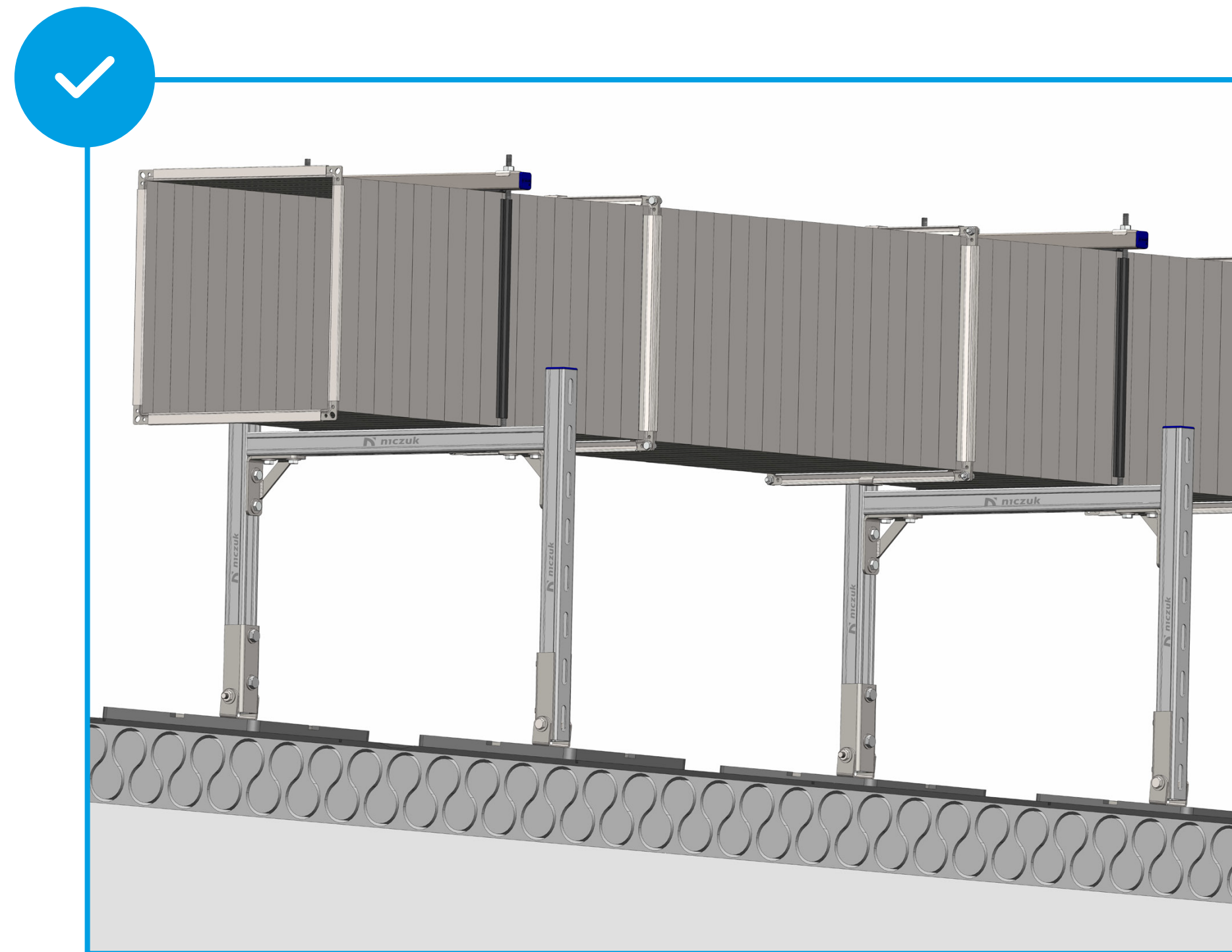
7. Incorrect installation of the cold clamps.

Note the marking on the insert. Incorrect installation will cause deformation the soft part of the insulation.



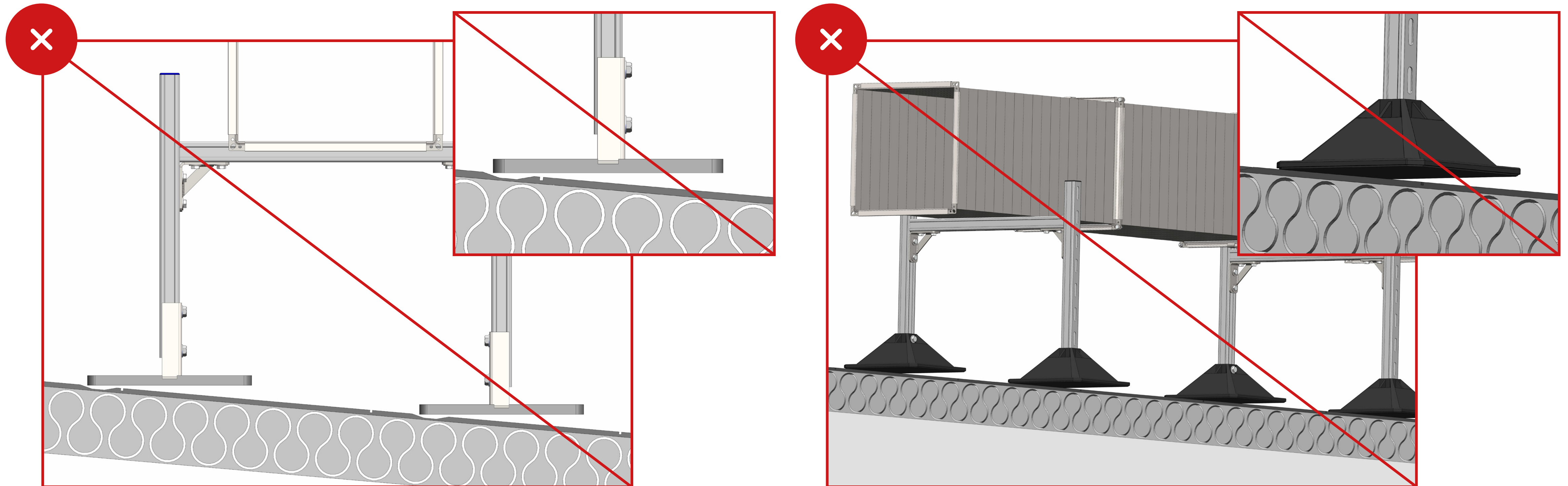
8. Correct selection of roof supports.

In the event of a significant roof slope, use adjustable roof supports or wedges in the form of a foam mat.



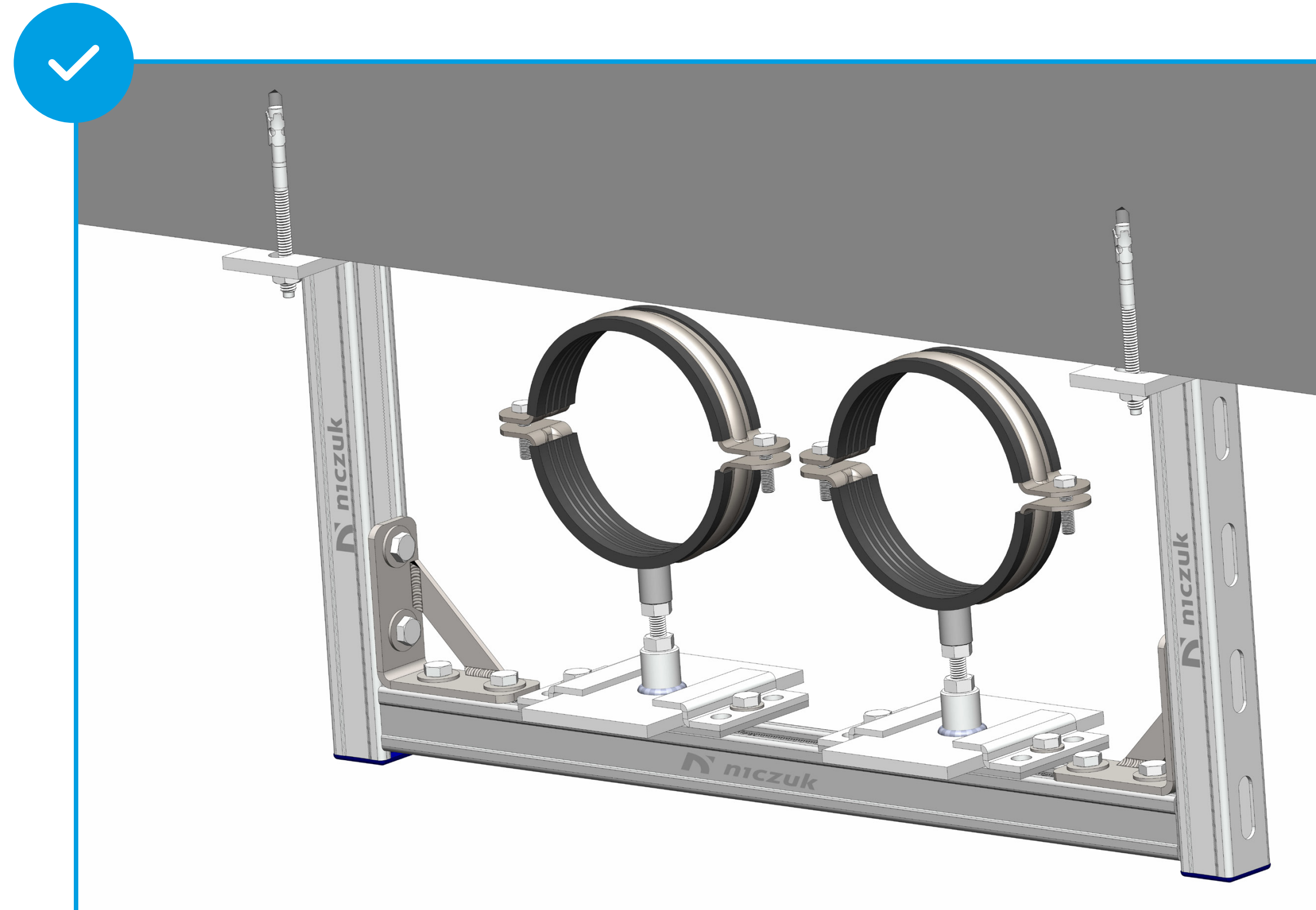
8. Incorrect selection of roof supports.

An incorrectly selected roof support can cause damage to the membrane and thermal insulation.



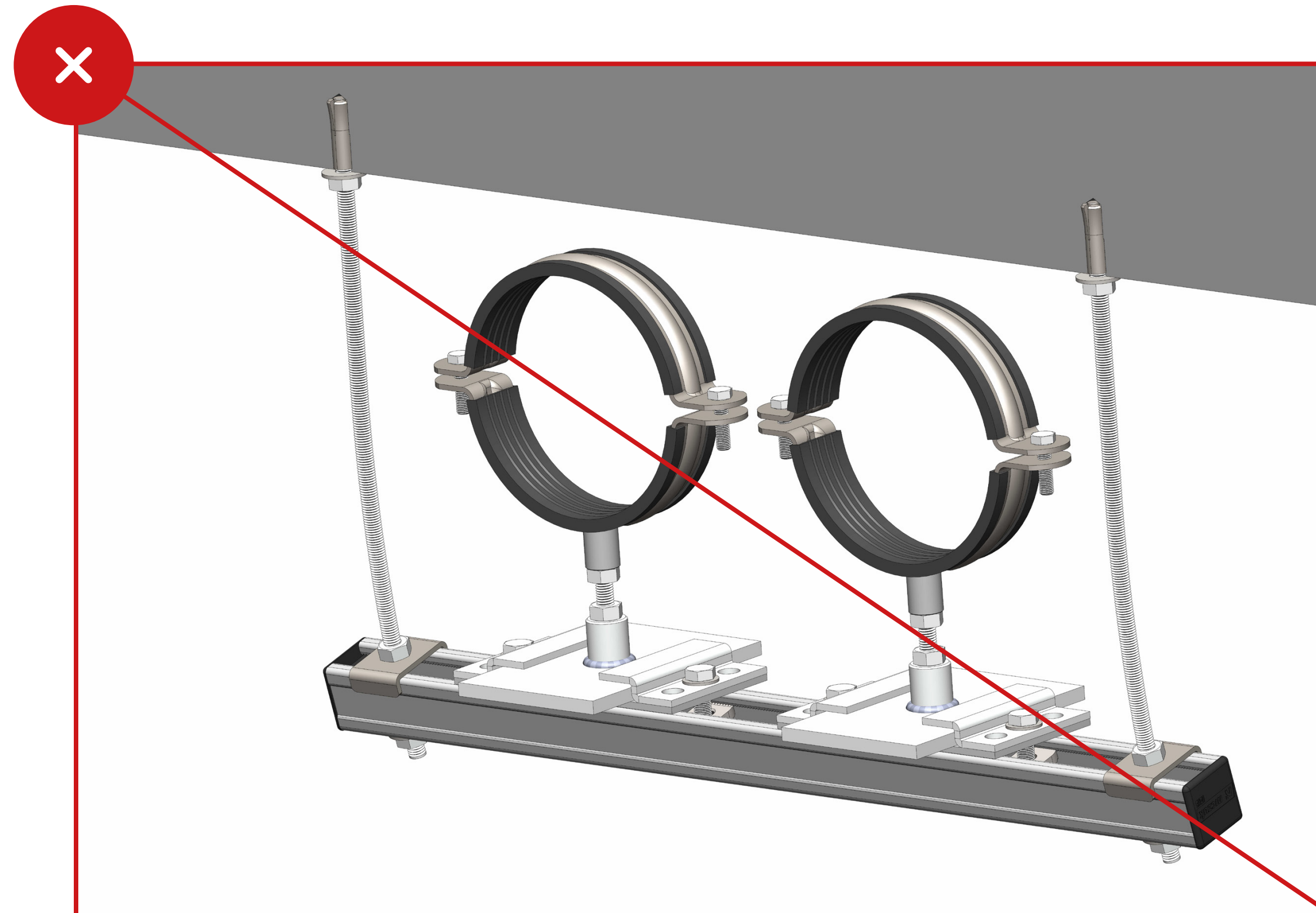
9. Correct installation of the sliding support.

Fix sliding supports with the use of mounting profiles.



9. Incorrect installation of the sliding support.

Installation of the slide support based on treaded rods bracket does not ensure sufficient rigidity of the system and causes locking of the slide support.



Let us stay in touch.

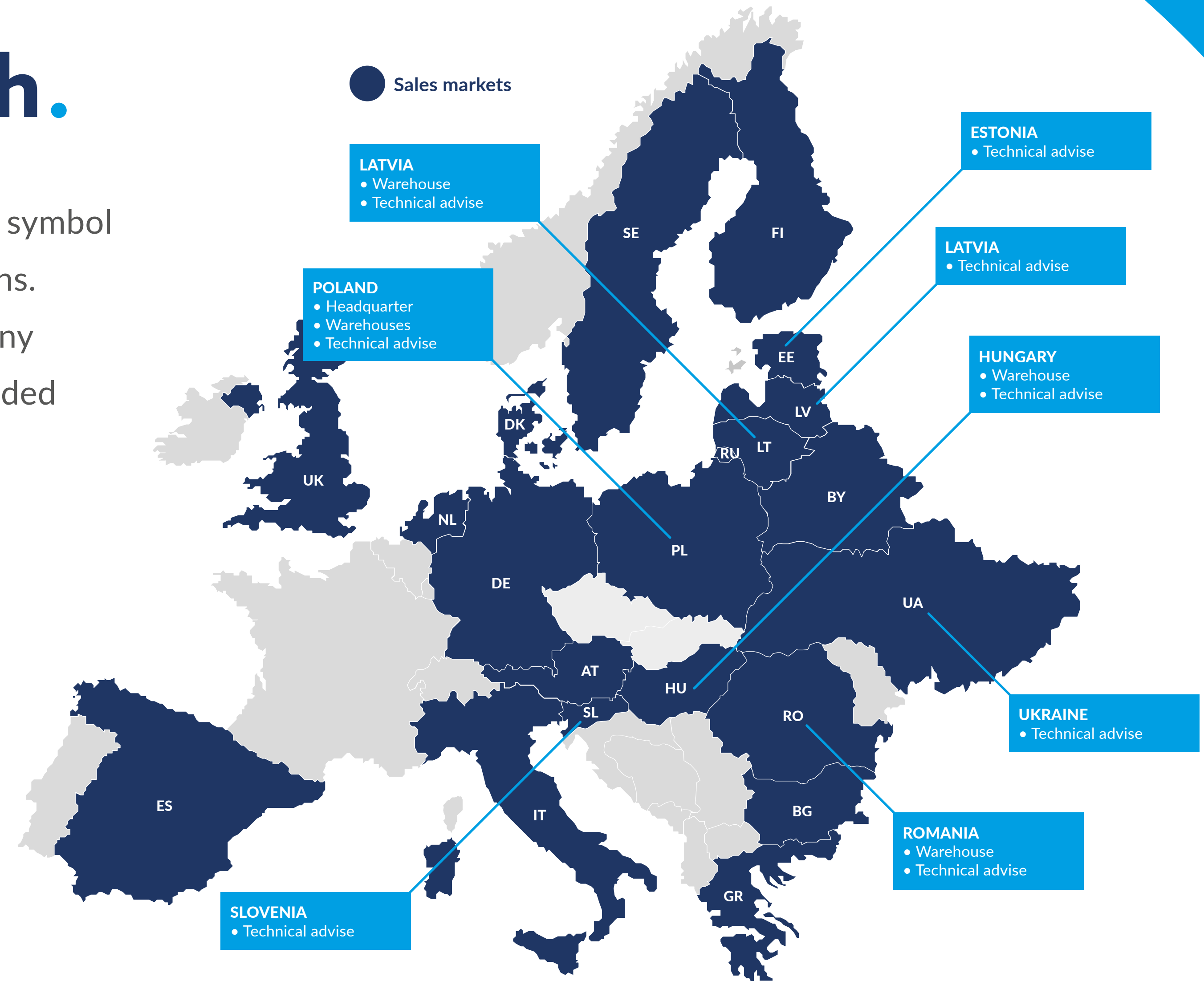
Today, the company THALE Sp. z o.o. Sp. k. stand for the symbol of modern management, competitive offer and innovations. As a results of the systematic development of the company and the increase in the sales in Poland, the company decided to increase the expansion on foreign markets.

Technical advise:

- Estonia (Russian language) ✉ a.manatov@niczuk.pl
- Latvia (Russian language) ✉ a.manatov@niczuk.pl
- Lithuania (Russian & Lituanian language) ✉ a.manatov@niczuk.pl
- Romania (Romanian & English language) ✉ a.vladut@niczuk.ro
- Hungary (Hungarian & English language) ✉ g.mraz@niczuk.hu
- Poland (Polish & English language) ✉ export@niczuk.pl

Design Department:

- Poland (Polish & English language) ✉ projekty@niczuk.pl





HIGH
QUALITY
HVAC
PRODUCTS

Greetings from Poland.

THALE Sp. z o.o. Sp. k. (former NICZUK Sp. j.)

Wilimowo 2 | 11-041 Olsztyn, POLAND

tel. +48 89 521 13 98 | www.niczuk.pl

export@niczuk.pl

niczuk.eu

