



**MSCA**

Marie Skłodowska-Curie Actions

*Developing talents, advancing research*



# All you need to know about Staff Exchanges

European Research Executive Agency

Sotirios Kiokias-REA A.3/CHE Panel Coordinator

Gianluca Coluccio-REA A.3/Call Coordinator

Marie Skłodowska-Curie Actions

# The MSCA under Horizon Europe



## Pillar I EXCELLENT SCIENCE

European Research  
Council

Marie Skłodowska-Curie  
Actions

Research Infrastructures



## Pillar II GLOBAL CHALLENGES & EUROPEAN INDUSTRIAL COMPETITIVENESS

Clusters

- Health
- Culture, Creativity & Inclusive Society
- Civil Security for Society
- Digital, Industry & Space
- Climate, Energy & Mobility
- Food, Bioeconomy, Natural Resources, Agriculture & Environment

Joint Research Center



## Pillar III INNOVATIVE EUROPE

European Innovation Council

European Innovation  
Ecosystems

European Institute of  
Innovation & Technology

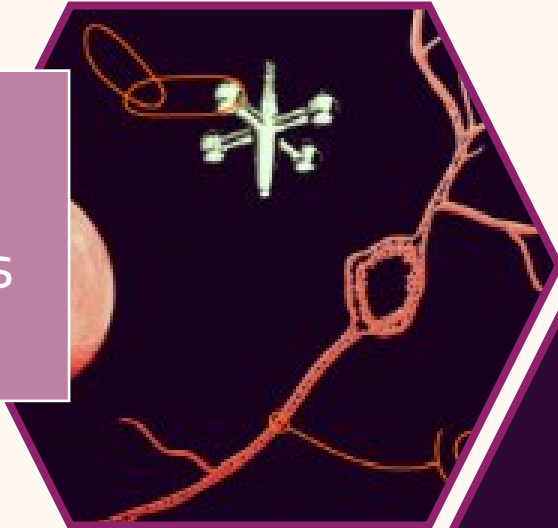
## WIDENING PARTICIPATION AND STRENGTHENING THE EUROPEAN RESEARCH AREA

Widening participation & spreading  
excellence

Reforming & enhancing the European R&I  
system

# Marie Skłodowska-Curie Actions (MSCA)

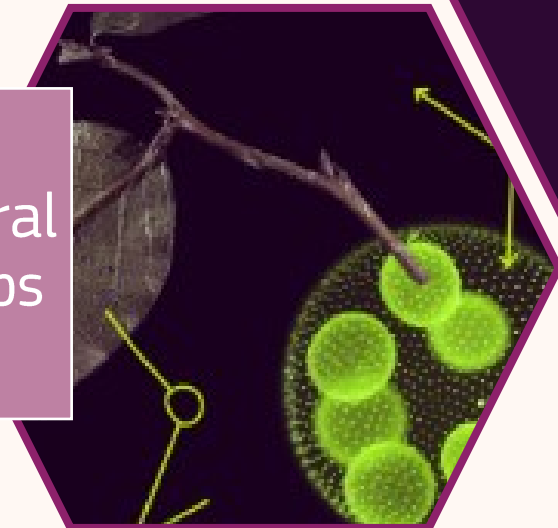
Doctoral  
Networks



COFUND



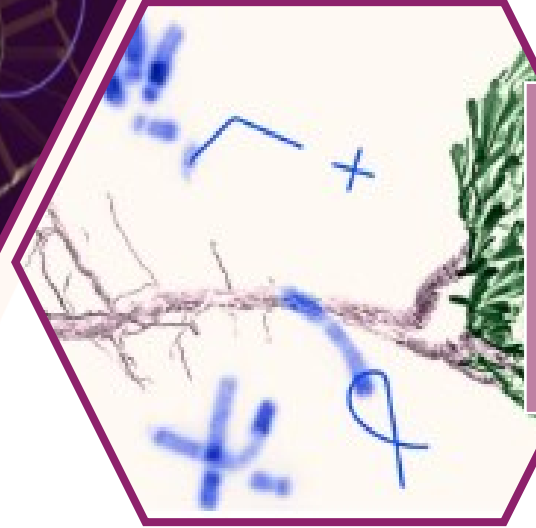
Postdoctoral  
Fellowships



Staff  
Exchanges



MSCA and  
Citizens





# 1. Staff Exchanges

## Main features

# Objectives



International,  
inter-sectoral  
and  
interdisciplinary  
mobility of R&I  
staff  
(secondments)



Knowledge  
transfer  
between  
participating  
organisations



Collaboration  
between the  
academic and  
non-academic  
sectors  
(including SMEs)



Cooperation  
across the  
globe

# Added value

## Staff members



Transferable skills & competences



Employability & career prospects



Ideas converted into products, processes & services



International exposure



Networking & communication

## Organisations



Transfer of knowledge



Collaborative networks

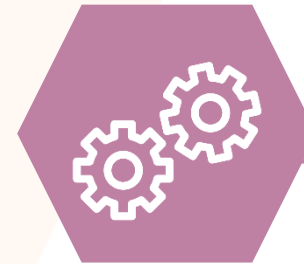


R&I capacity

# Who can participate in MSCA-SE projects?

Consortium of min. **3 legal entities** in **3 different countries**, 2 of which in a different EU Member State or HE Associated Country

Academic sector



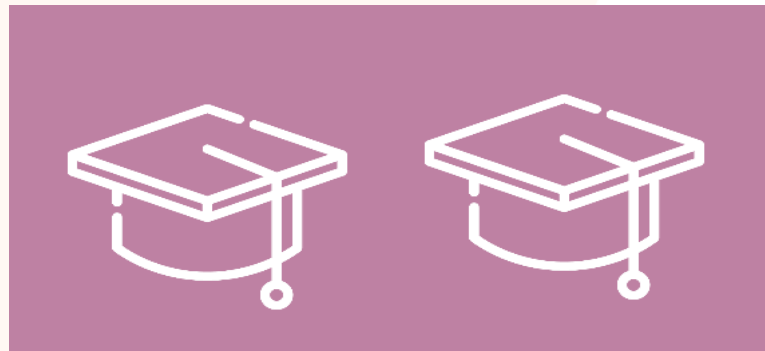
Non-academic sector

# Eligible SE research consortia (for min of 3 entities)

If all 3 entities are **European (MS/AC)**, one should be **from a different sector**



If all 3 entities from **same sector (e.g. academic)** one must be **located outside Europe**





# Eligible staff



## Seconded staff members



Any type of staff involved in R&I activities (researchers, administrative staff, managerial staff, technical staff)

Researchers at any career stage (e.g. from doctoral candidates to postdoctoral researchers)

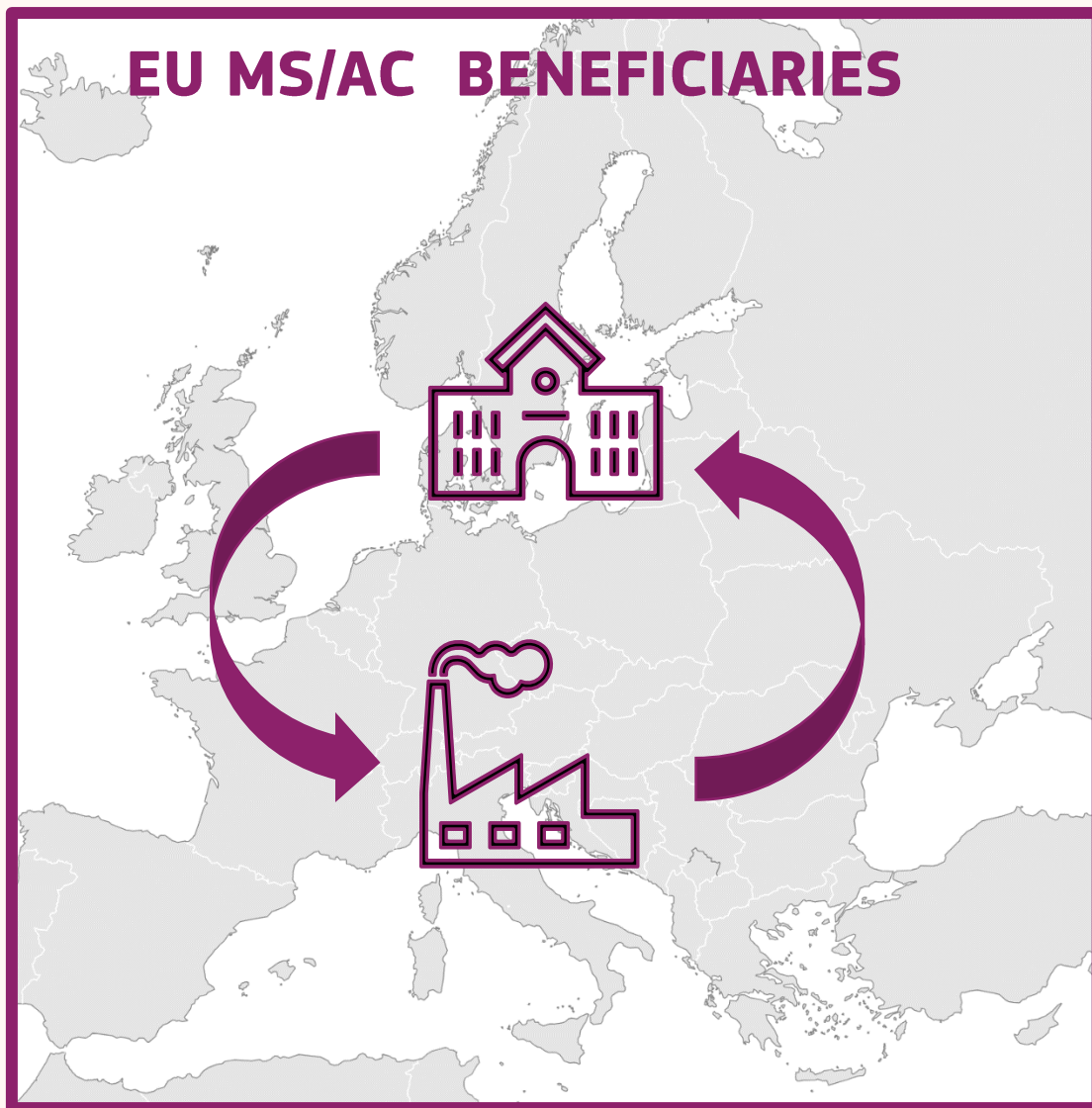
Actively engaged in research and/or innovation activities for at least **1 month** prior at the sending institution

Each staff member is seconded for a period of **1 to 12 months** (may be split into several stays)

Staff needs to be devoted **full-time** to the action during the secondment

After the secondment, staff should **return to their sending institution**

# Eligible secondments in Europe & AC



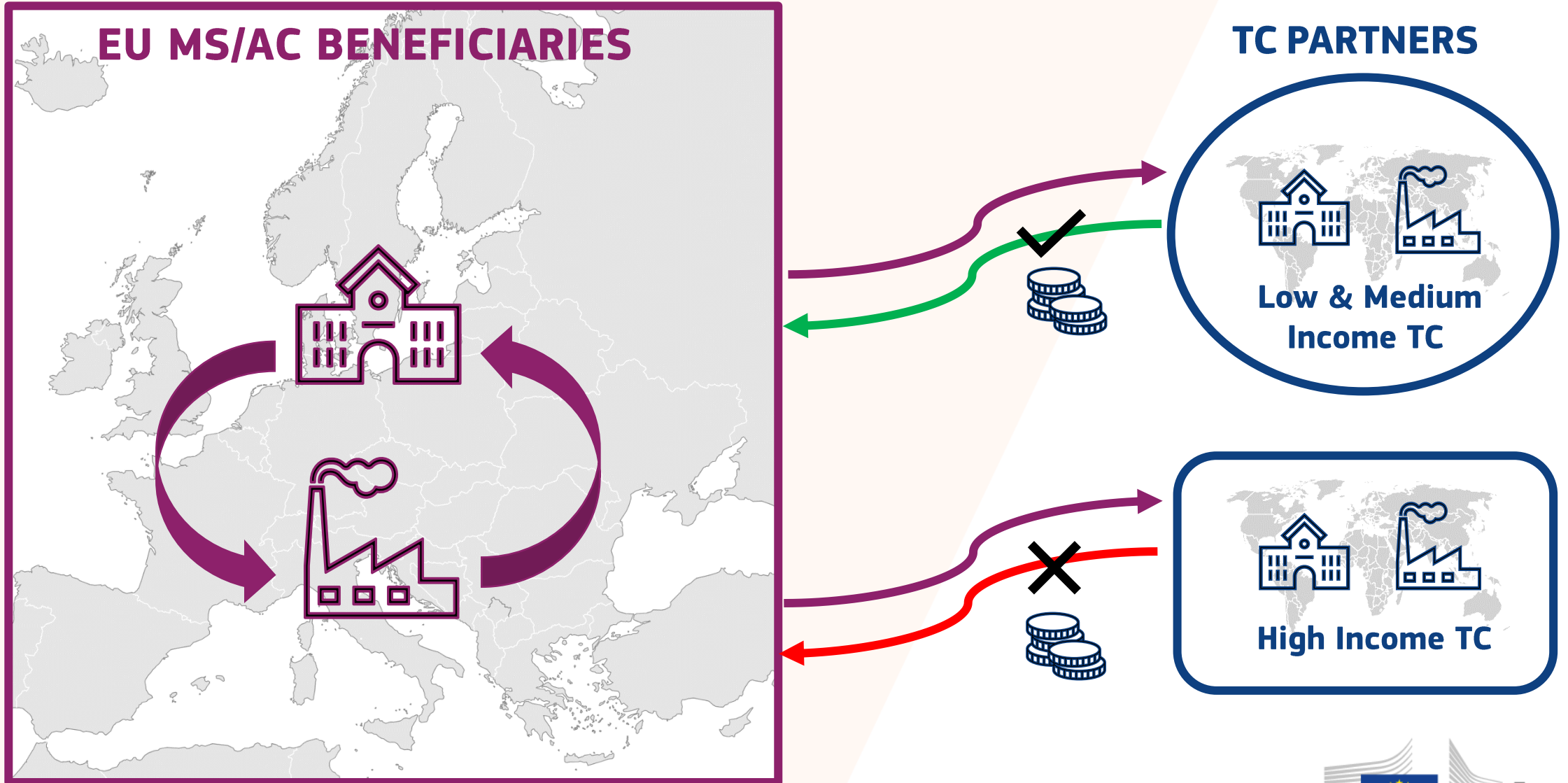
**<1/3**

# Same-sector secondments in Europe (MS/AC)

- $\leq 1/3$  of the total secondments funded by the EU, if considered *Interdisciplinary*
- Interdisciplinary secondments integrate aspects from two or more different scientific disciplines
- Important: scientific panels + descriptors/MSCA keywords from proposal form part A (see [REA Website](#))



# Eligible international secondments



# What does Staff Exchanges fund?

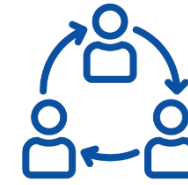
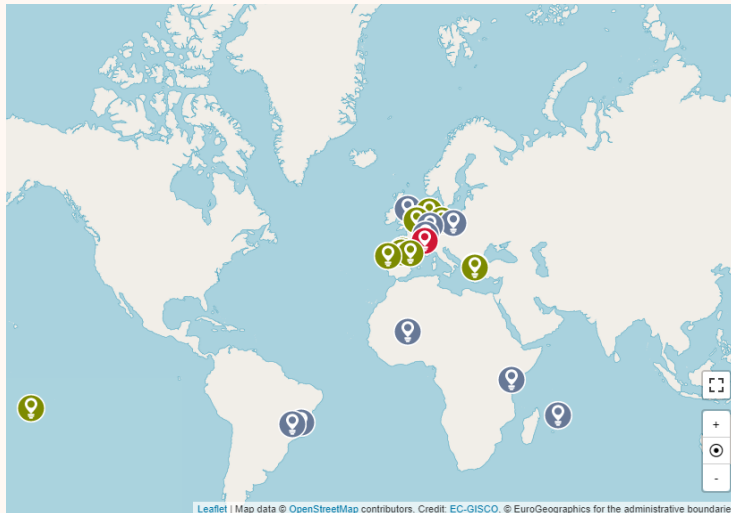


Budget of SE project based on the Nr of planned secondments

# INOVEC #101086257 HORIZON-MSCA-2021-SE-01



The **INOVEC** project seeks to establish a broad European network for developing innovative, integrated mosquito vector control methods against emerging arboviruses



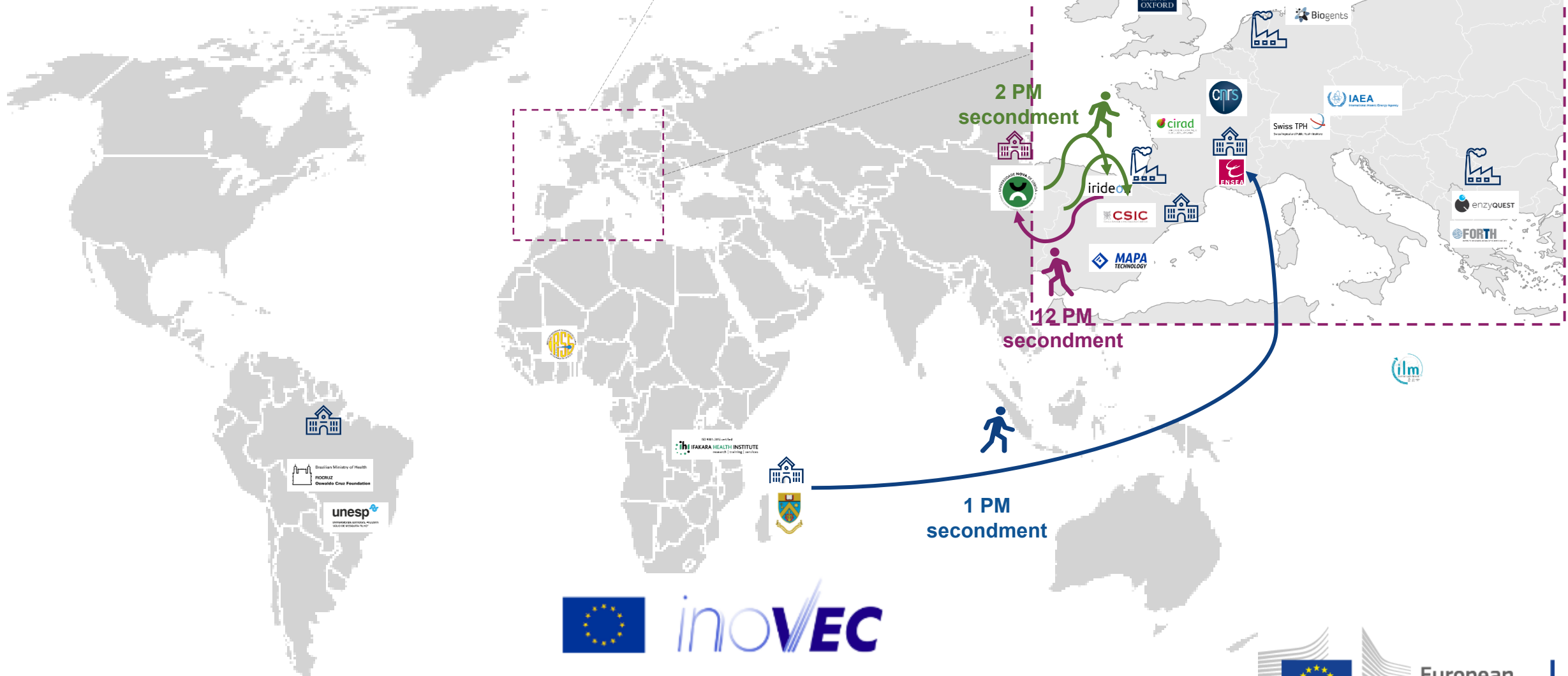
- **23 partners**
- **14 based in EU/AC**
- **9 entities based in a TC**
- **8 SME partners**



€ 1,407,600.00



# INOVEC Project Example



# Key features



**BOTTOM UP**  
with different  
scientific panels

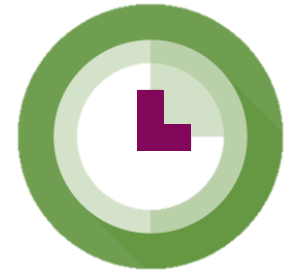


**TOP UP ALLOWANCE**  
**5010 €:**  
2710 € - staff allowance  
2300 € - organisation



**SECONDMENTS**  
**1-12** months per staff

- Interdisciplinary
- Intersectoral
- International



**DURATION**  
**4** years  
**360** person-months  
per project



# Staff Exchanges - making a difference



## **WORLD-WIDE**

The highest participation of non-EU countries in MSCA



## **BUSINESS PARTICIPATION**

Businesses receive an estimated 30 % of the available funding



## **PATENTS**

Significant share of all patents in MSCA actions



## **SUCCESS RATE**

Between 20 & 40% depending on the discipline and on the year



# 2. Staff Exchanges

Proposal submission & evaluation

# Key Dates & Budget Call 2024



Call Opening 2024: **19 September 2024**

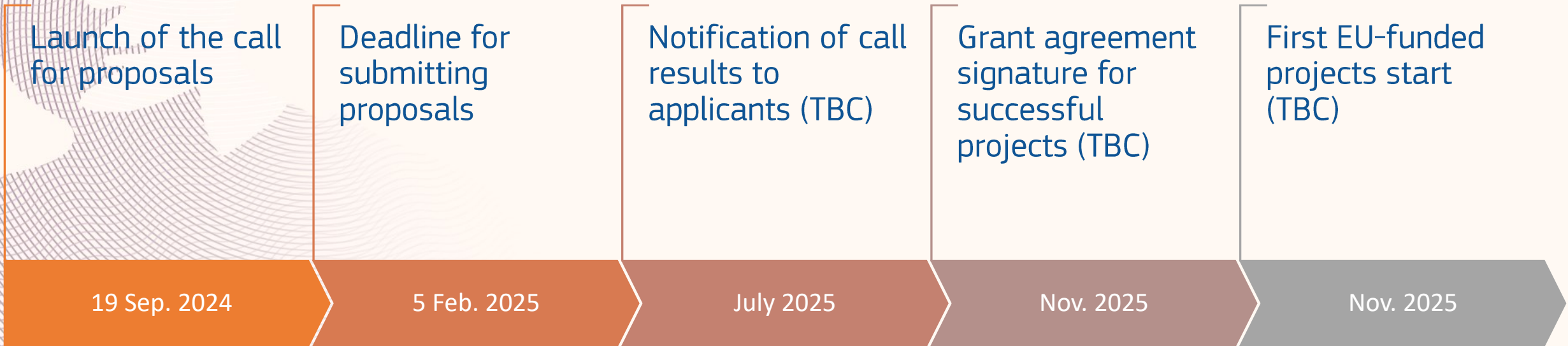


Call Closure: **5 February 2025**

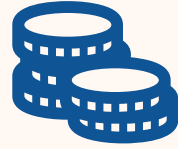


Call 2024 Budget: **€ 99.47 M**

# HORIZON-MSCA-2024-SE-01 – Indicative timeline



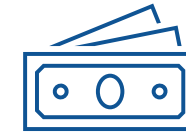
# Key changes



This year budget is  
**€ 99,47 M**  
(20 Million € more!)



Unit cost is  
increased to  
**€ 5010**



Staff allowance  
increased to  
**€ 2710**



**UK** back as  
Beneficiary



**LoC** no more  
needed

# Staff Exchanges 2024 – EU Funding & Tenders Portal

Home > Funding > Calls for proposals > MSCA Staff Exchanges 2024

## MSCA Staff Exchanges 2024

HORIZON-MSCA-2024-SE-01-01

Topic Call for proposal

### Internal navigation

General information

Topic description

Topic updates

Mission

Destination

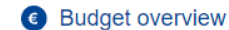
Conditions and documents

Partner search announcements

### General information

#### Programme

Horizon Europe (HORIZON)



#### Call

MSCA Staff Exchanges 2024 (HORIZON-MSCA-2024-SE-01)

#### Type of action

HORIZON-TMA-MSCA-SE HORIZON TMA MSCA Staff Exchanges

#### Type of MGA

HORIZON Unit Grant [HORIZON-AG-UN]



#### Deadline model

single-stage

#### Opening date

19 September 2024

#### Deadline date

05 February 2025 17:00:00 Brussels time

# Reference documents



MSCA Work  
Programme & annexes

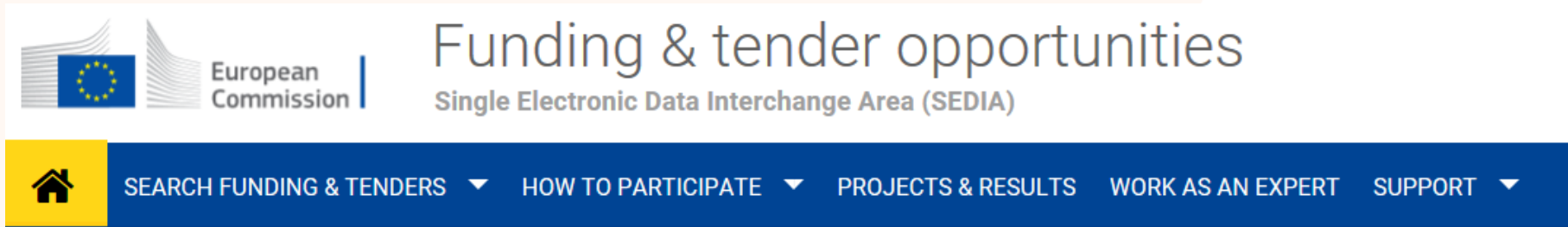


Proposal templates



Frequently Asked  
Questions

# How to start writing your proposal



## Start submission

Need help?

To access the Electronic Submission Service, please click on the submission-button next to the **type of action** and the **type of model grant agreement** that corresponds to your proposal. You will then be asked to confirm your choice, as it cannot be changed in the submission system. Upon confirmation, you will be linked to the correct entry point.

To access existing draft proposals for this topic, please login to the Funding & Tenders Portal and select the My Proposals page of the My Area section.

### Please select the type of your submission:

- HORIZON TMA MSCA Staff Exchanges [HORIZON-TMA-MSCA-SE], HORIZON Unit Grant [HORIZON-AG-UN]

Start submission



Progress bar: Login (checked), Topic selection (checked), **Create proposal** (active), Participants, Proposal forms, Submit

### Create proposal

**Deadline**  
05 February 2025 17:00:00 Brussels Local Time  
103 days left until closure

**Call data**  
Call: HORIZON-MSCA-2024-SE-01  
Topic: [HORIZON-MSCA-2024-SE-01-01](#)  
Type of action: HORIZON-TMA-MSCA-SE

**Find your organisation**  
PIC  Short name

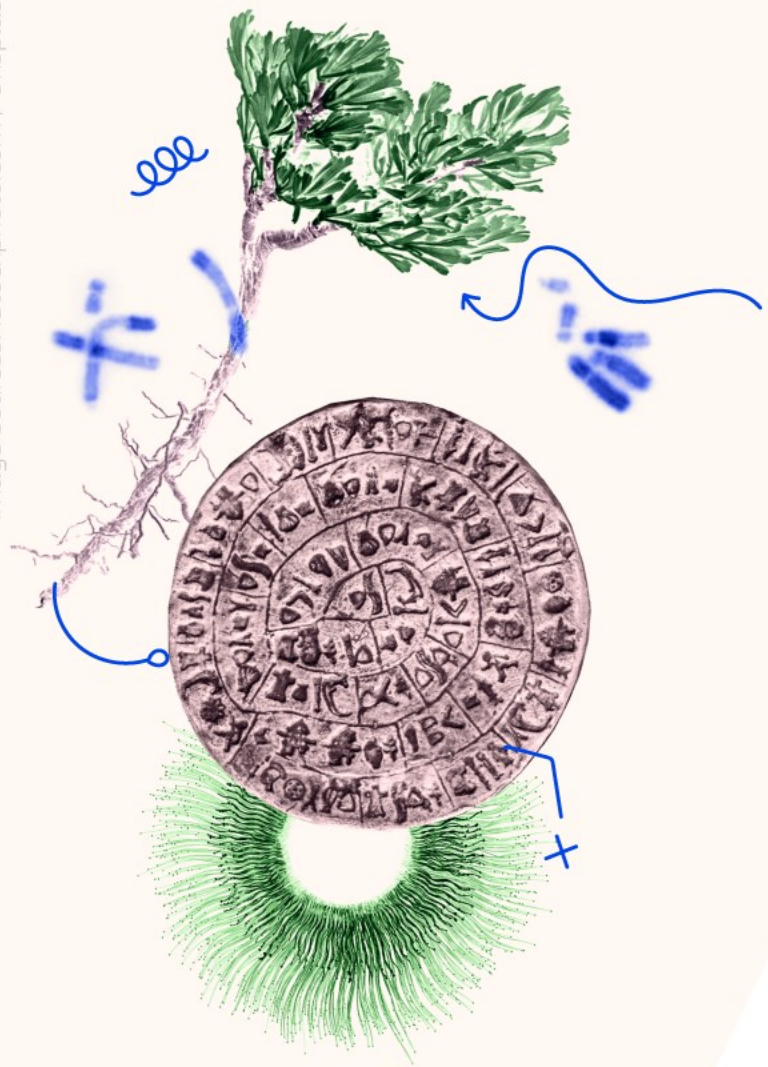
**Warning:** Please submit your proposal at the latest **48 hours before the deadline** (to avoid system congestion or system incompatibility issues). Late proposals will not be accepted. Don't wait until the end because you are worried about confidentiality – we will not open the proposals before the deadline. **You can submit the proposal as many times as you wish up until the deadline.** Each new submitted version will replace the previous one.





# Evaluation criteria

Excellence	Impact	Quality and efficiency of the implementation
Quality and pertinence of the project's <b>research and innovation objectives</b> (and the extent to which they are ambitious, and go beyond the state of the art)	Developing new and lasting <b>research collaborations</b> , achieving <b>transfer of knowledge</b> between participating organisations and contributing to improving <b>research and innovation potential</b> at the European and global level	Quality and effectiveness of the <b>work plan</b> , assessment of <b>risks</b> , and appropriateness of the effort assigned to work packages
Soundness of the <b>proposed methodology</b> (including i3 approaches, consideration of the gender dimension and other diversity aspects, and the quality of open science practices)	Credibility of the measures to enhance the <b>career perspectives</b> of staff members and contribution to their <b>skills development</b>	Quality, capacity and role of each participant, including <b>hosting arrangements</b> and extent to which the consortium as a whole brings together the necessary expertise
Quality of the proposed <b>interaction between the participating organisations</b> in light of the research and innovation objectives	Suitability and quality of the measures to <b>maximise expected outcomes and impacts</b> , as set out in the dissemination and exploitation plan, including communication activities	
	The magnitude and importance of the project's contribution to the expected <b>scientific, societal and economic impacts</b>	
50%	30%	20%



# How to find partners?



NETWORKING  
EVENTS  
(CONFERENCES,  
WORKSHOPS, ETC.)



FORMER OR  
CURRENT  
COLLABORATIONS



JOINT  
PROJECTS



FUNDING AND  
TENDER  
OPPORTUNITIES  
PORTAL



MSCA  
MATCHMAKING  
PLATFORM



EUROPEAN  
ENTERPRISE  
NETWORK



NATIONAL  
CONTACT  
POINT

# How to find partners F&T opportunities

The screenshot displays the EU Funding & Tenders Portal interface. The top navigation bar includes 'Home', 'Funding', 'Procurement', 'Projects & results', 'News & events', and 'Work as an expert'. The 'Funding' menu is open, showing options like 'Calls for proposals', 'Participant register', 'Partner search' (highlighted with a red circle and arrow), 'EU programmes', 'Funding updates', and 'Horizon4Ukraine'. The main content area shows the 'Partner search' page with 10000+ results found. A warning message states: 'There are more than 10000 results, please refine your search criteria.' The search filters include 'Match whole words only' (checked), 'Type', 'Horizon Europe (HORIZON)', 'Topic', 'Country', and 'All filters'. The search results list two organizations: INAGROPEC SOCIEDAD LIMITADA (Spain) and SYNYO GmbH (Austria).

# Tips and tricks



**Closely follow the call requirements**



**Highlight the EU dimension**



**Sustainability of collaboration**



**Follow available guidelines**



**Get a second opinion**



**Contact your National Contact Point (NCP)**

# Synergies between MSCA SE and other grants

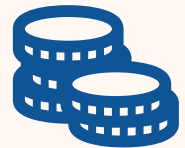
## A synergetic MSCA SE project



Travel



Accommodation

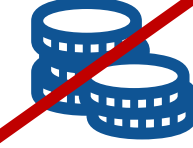


Subsistence



Management costs related to the SE project

## Another grant



# Research Enquiry Service

For questions about  
research and Horizon Europe  
please contact  
the [Research Enquiry Service \(europea.eu\)](https://europea.eu)



© European Union 2021

Unless otherwise noted the reuse of this presentation is authorised under the [CC BY 4.0](https://creativecommons.org/licenses/by/4.0/) license. For any use or reproduction of elements that are not owned by the EU, permission may need to be sought directly from the respective right holders. Image sources: iStockphoto.com/Unsplash





© European Union, 2024. Image source: everettcollection, Canva.

*“Nothing in  
life is  
to be feared;  
it is only  
to be  
understood”*