



PERGOLAS, SHADE CANOPIES & OUTDOOR KITCHENS

PRODUCT GUIDE 2025



TABLE OF CONTENTS

PERGOLA STYLES	4
STRAIGHT TOP FREESTANDING	8
ARCH TOP FREESTANDING	10
STRAIGHT TOP ATTACHED	12
AMBIANCE LOUVERED ROOM	14
LOCKHART	18
WESTERN RED CEDAR	20
ADD-ON PRODUCTS	
SHADE CANOPIES & SCREENS	22
OUTDOOR KITCHENS	24
PRODUCT DETAILS	36



Outdoor living customized for your lifestyle.

Choose from among our many styles of pergolas—in solid cellular vinyl, wood, and aluminum—to create a space designed just for your way of outdoor living.



Attached Straight Top Pergola with
Square Paneled Columns

PERGOLAS & SHADE CANOPIES

Pergolas provide a distinct space for dining al fresco, an elegant frame for colorful climbing plants, as well as shade without limiting sunlight and airflow. Select from a variety of features to customize a pergola for your needs and style. Start with the pergola top and select columns, beam end cuts, and shade canopy.

This Pergola Product Guide identifies each of our many styles of pergolas, as well as add-on options to make the outdoor structure truly yours. Our solid cellular vinyl, wood, and metal pergolas include freestanding and attached options in a range of styles designed to complement any aesthetic.

PERGOLA STYLES



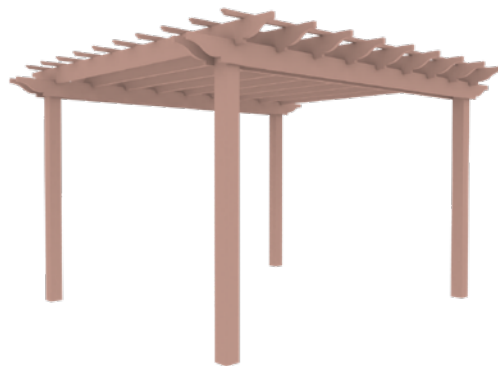
STRAIGHT TOP FREESTANDING



ARCH TOP FREESTANDING



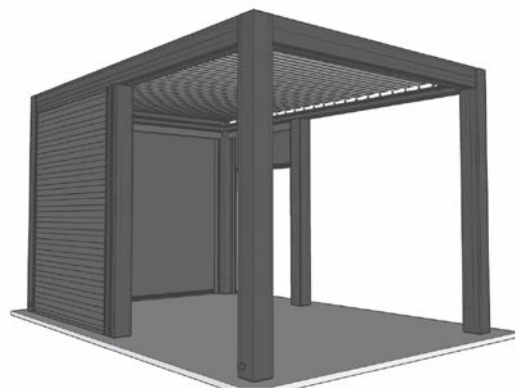
STRAIGHT TOP ATTACHED



WESTERN RED CEDAR



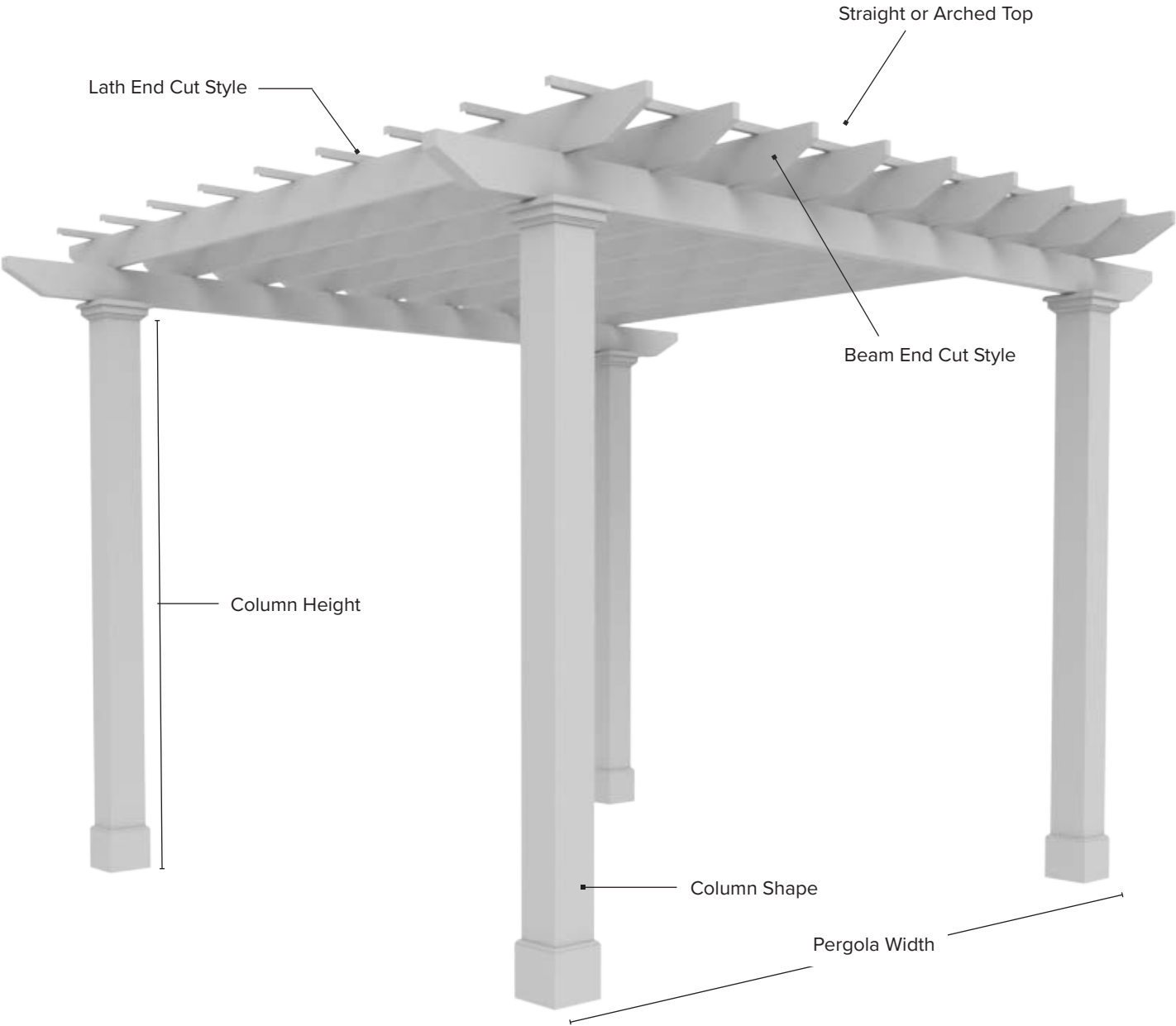
LOCKHART



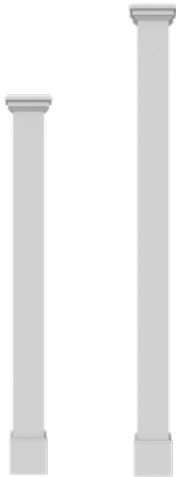
AMBIANCE LOUVERED ROOM

PERGOLA COMPONENTS

Our pergola styles offer a variety of customizable features from which to choose. Select from column shapes, beam end cut designs, straight or arched top—and much more.



COLUMN SHAPE & HEIGHT



PLAIN COLUMNS

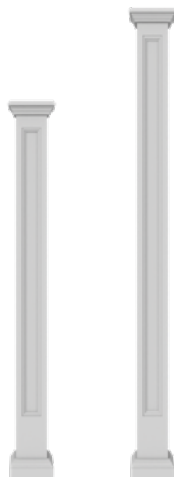
Square Solid Cellular Vinyl columns with steel pipe core. Accented with elegant capitals and decorative base. Available in two heights and two widths. Prefinished white.

795354 8"SQ x 8'H

795355 8"SQ x 10'H

795344 10"SQ x 8'H

795343 10"SQ x 10'H



PANELED COLUMNS

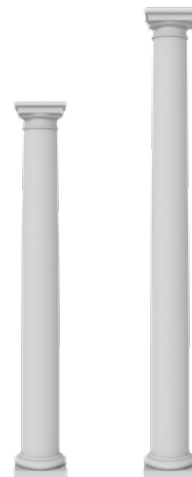
Square Solid Cellular Vinyl columns with recessed panels, elegant capitals, and decorative base. Steel pipe core. Available in two heights and two widths. Prefinished white.

795356 8"SQ x 8'H

795357 8"SQ x 10'H

795342 10"SQ x 8'H

795341 10"SQ x 10'H



ROUND COLUMNS

Tapered Tuscan fiberglass round columns with elegant capital and decorative base. Steel pipe core. Available in two heights. Prefinished white.

795358 10"DIA x 8'H

795359 10"DIA x 10'H

BEAM END CUTS

Crafted in Solid Cellular Vinyl, beam cuts are offered in four styles for even greater customization.



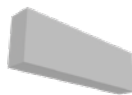
OGEE

Standard with pergola



45-DEGREE DIAGONAL

/SLA44



FLAT

/SLA45



COVE

/SLV43



MARSTON

/SLV42

LATH END CUTS

Crafted in Solid Cellular Vinyl, lath end cuts are offered in three styles.



COVE

Standard with pergola



DIAGONAL



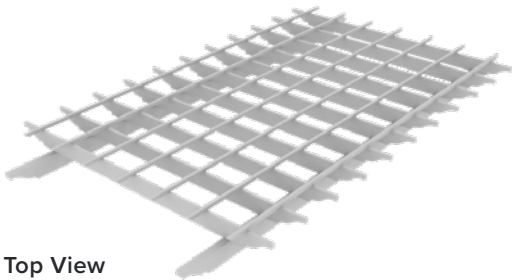
STRAIGHT

PERGOLA STYLES

Straight Top Freestanding

The freestanding straight top pergola is available in a variety of sizes (shown at the end of this guide) with customizable options for column shape, beam and lath end cut styles, as well as additional optional features. Illustrated below are two possible configurations of the Straight Top Freestanding pergola.

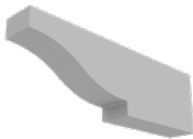
SAMPLE CONFIGURATION: 8' x 15.5'



Top View



Column: 8'H Square

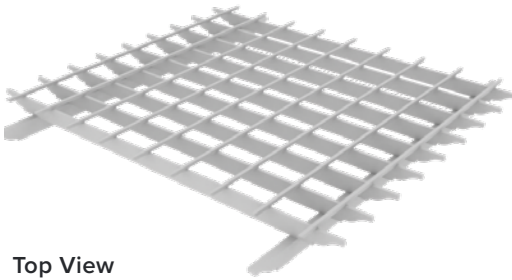


Beam End Cut: Ogee



Lath End Cut: Cove

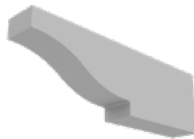
SAMPLE CONFIGURATION: 12' x 12'



Top View



Column: 8'H Paneled



Beam End Cut: Ogee



Lath End Cut: Cove



TOP Freestanding Straight Top with Square Columns

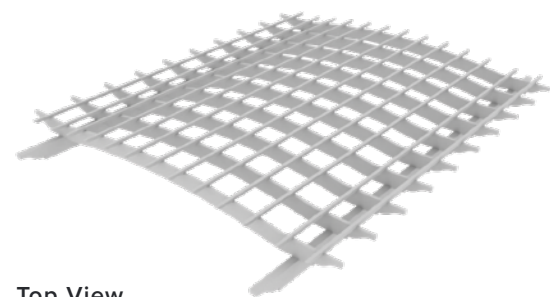
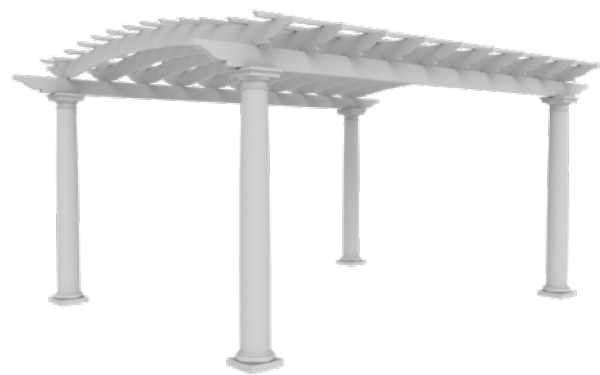
BOTTOM Freestanding Straight Top with Paneled Columns

PERGOLA STYLES

Arch Top Freestanding

The freestanding arch top pergola is available in a variety of sizes (shown at the end of this guide) with customizable options for column shape, beam and lath end cut styles, as well as additional optional features. Illustrated below are two possible configurations of the Straight Top Freestanding pergola.

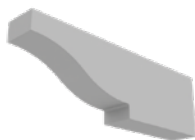
SAMPLE CONFIGURATION: 12' x 15.5'



Top View



Column: 8'H Tapered

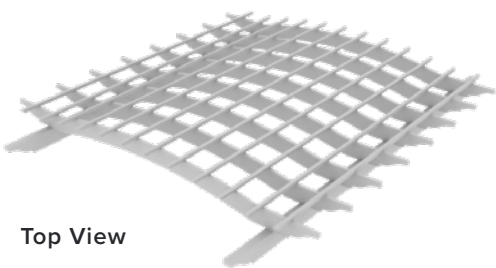


Beam End Cut: Ogee



Lath End Cut: Cove

SAMPLE CONFIGURATION: 10' x 12'



Top View



Column: 8'H Paneled



Beam End Cut: Marston



Lath End Cut: Cove



TOP Freestanding Arch Top with Round Columns

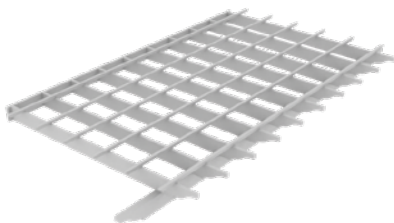
BOTTOM Freestanding Arch Top with Paneled Columns

PERGOLA STYLES

Straight Top Attached

The freestanding arch top pergola is available in a variety of sizes (shown at the end of this guide) with customizable options for column shape, beam and lath end cut styles, as well as additional optional features. Illustrated below are two possible configurations of the Straight Top Freestanding pergola.

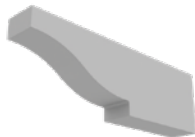
SAMPLE CONFIGURATION: 8’ x 14’



Top View



Column: 8'H Tapered

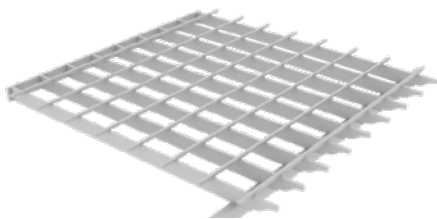


Beam End Cut: Ogee



Lath End Cut: Cove

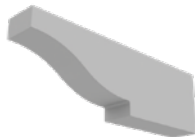
SAMPLE CONFIGURATION: 12’ x 12’



Top View



Column: 8'H Paneled



Beam End Cut: Ogee



Lath End Cut: Cove

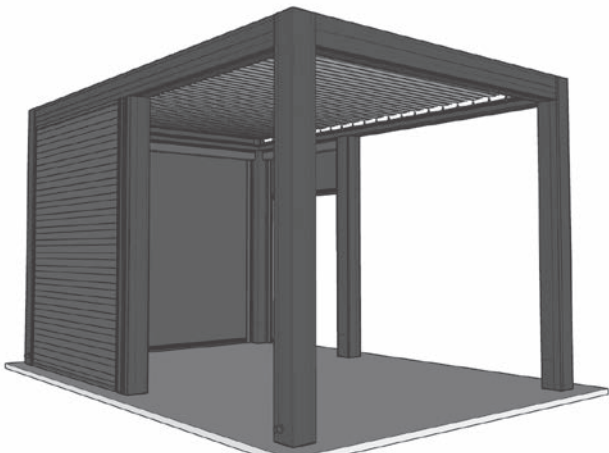


TOP Attached with Round Columns
BOTTOM Attached with Paneled Columns

PERGOLA STYLES

Ambiance Louvered Room - Elite Pergola

Offered as a kit in two sizes or as a custom design in a variety of sizes with multiple add-on features, the aluminum Ambiance Louvered Room is built with superior quality and patent-pending louver technology for 100% water-tight protection (when in closed position).



Ambiance Elite 12' x 16'
with Aluminum Wall add-ons

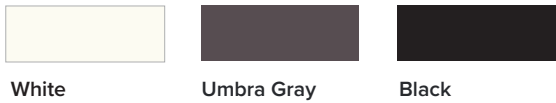
ELITE PERGOLA

The Ambiance Elite is built with robust 8"x8" reinforced posts and beams and features an exclusive patent-pending louver system that ensures complete weather protection. Walpole Outdoors offers this louvered room in a variety of sizes with multiple add-on features.

Maximum bay size with snow-load is 12' x 18'. Maximum bay size with no snow-load is 15' x 23'.

BY SQ FT 32AMBELPERG Manual Louvered Pergola Frame Custom Size

The frame and louvers are available in any combination of three colors.



ADD-ON FEATURES:

- FAN BAR** **32AMBELFB**
- LOUVER MOTOR** **32AMBELMTR** Per Bay
- EXTRA POST** **32AMBELXP**



LED LIGHTS
32AMBELLGT

Priced per bay, LED Lights seamlessly integrate into the design, providing ideal lighting without additional luminaries.



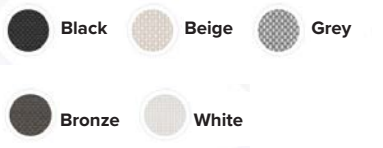
SOLID WALL
32AMBELWL

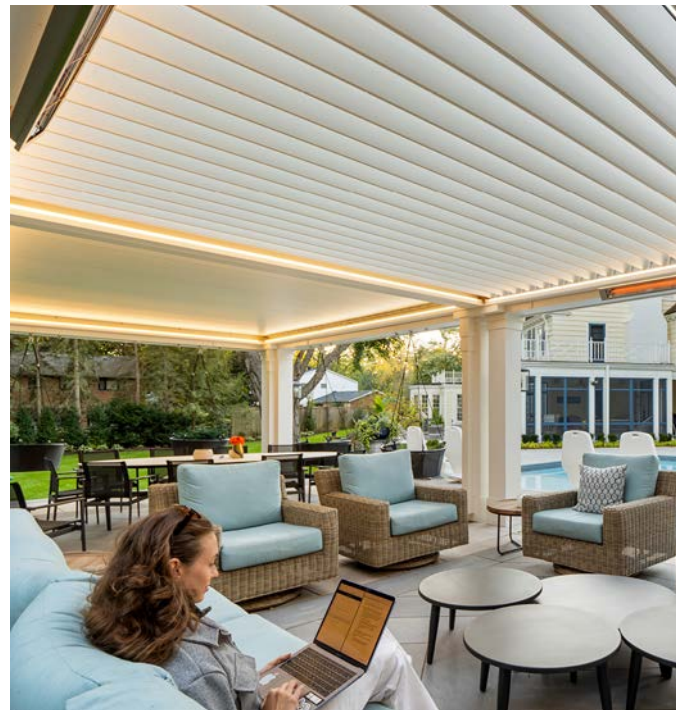
Aluminum solid walls provide shade, privacy, and weather protection to enhance your pergola experience. Available in a variety of colors, from Jet Black and Pure White to Umbra Grey and even Wood Grain for a natural touch.



MOTORIZED ZIP SCREEN
32AMBELZIP

ZIP screen sides offer the perfect balance between protection and visibility. Offered in 10% transparency for optimal control of sunlight, wind, rain, and light, they guarantee UV and heat protection in 5 fabric colors, tested for durability and functionality.





TOP Ambiance Elite with solid walls

BOTTOM L Ambiance Elite with ZIP side screens

BOTTOM R Ambiance Elite in White

PERGOLA STYLES

Ambiance Louvered Room - Kit Pergola

Offered as a kit in two sizes or as a custom design in a variety of sizes with multiple add-on features, the aluminum Ambiance Louvered Room is built with superior quality and patent-pending louver technology for 100% water-tight protection (when in closed position).



Ambiance Kit 10' x 12'

KIT PERGOLA

For a modern look in smaller spaces, the Ambiance Kit Pergola is available with the same louver system technology as the Ambiance Elite. Offered in two ready-to-install sizes of 10'x10' and 10'x12', the Ambiance Kit Pergola comes in sophisticated umbra gray with white louvers. Its compact design features 4"x4" posts and beams, making it ideal for intimate spaces. The Ambiance Kit comes standard with motorized louvers.

AMBKIT10 10' x 10' Kit Motorized Louvered Pergola

AMBKIT12 10' x 12' Kit Motorized Louvered Pergola

FRAME AND LOUVER COLORS

The Ambiance Kit is available in umbra gray with white louvers.



Umbra Gray - frame



White - louvers

ADD-ON FEATURES:

MANUAL ZIP SCREEN

32AMBZIP10 for 10'x10'

32AMBZIP12 for 10'x12'

ZIP screen sides offer the perfect balance between protection and visibility. Offered in 10% transparency for optimal control of sunlight, wind, rain, and light, they guarantee UV and heat protection, tested for durability and functionality. Available in White for Kit pergolas.

LED LIGHTS

32AMBKITLGT

LED Lights seamlessly integrate into the design, providing ideal lighting without adding separate light sources. Built in along two sides of Kit pergolas.





TOP Ambiance Kit Pergola

BOTTOM L Ambiance Kit Pergola with Zip Screen

BOTTOM R Ambiance Kit Pergola with LED Lights

PERGOLA STYLES

Lockhart

Create your own contemporary outdoor living space with the freestanding Lockhart Pergola. Crafted in solid cellular vinyl, square columns have a top trim and end with base kickplate. Factory primed and painted in Iron Ore. Optional Privacy Panel available.

Columns: 5.5” sq x 96” H with 3” OD galvanized pipe core

Beams: 5.5” x 9”

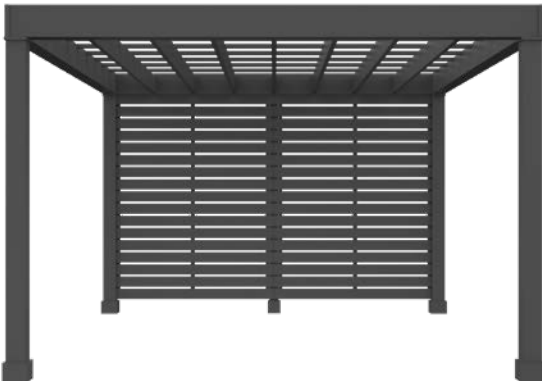
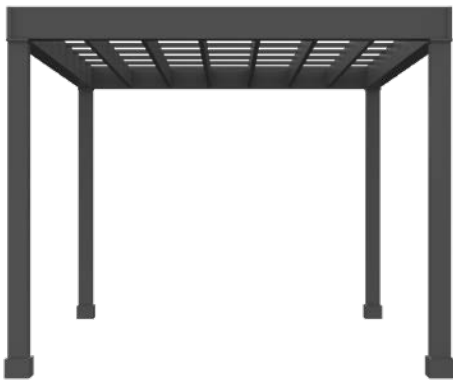
Color: Iron Ore

Add-on Features: Privacy panel

LOCKHART 10’ x 12’



LOCKHART 12’ x 14’ WITH PRIVACY PANEL





TOP Lockhart Pergola

BOTTOM Lockhart Pergola with Privacy Panel

PERGOLA STYLES

Western Red Cedar

This pergola kit features stunning, select grade and knot-free kiln dried Western Red Cedar. The Walpole “E” end cut style is standard. The kit is unstained and will weather to a beautiful silver gray.

Posts: 5.5” sq x 97.5” H

Double Beams: 1.5” x 7.25”

WESTERN RED CEDAR 10’ x 10’



WESTERN RED CEDAR 12’ x 14’





TOP Western Red Cedar Pergola
BOTTOM Western Red Cedar Pergola

ADD-ON OPTIONS

UNDERSIDE SHADE CANOPY

Our shade canopies are a must-have for your outdoor living area. They are fitted to the underside of straight and arched pergola tops. Straight top canopies are available as manual or with a motor drive. Arch top canopies are available only with manual drive. Sunbrella rain-resistant fabric is available in over 140 beautiful solids and stripes and 13 Harbor-Time waterproof fabrics.



SENTRY MOTORIZED SIDE SCREENS

The Sentry Retractable Screen provides an elegant and reliable motorized side shade for pergolas. Available in widths of 10', 12', 14', and 16', this screen is a smart, attractive way to keep your outdoor living room protected from the sun. These screens can also be used in combination with an underside shade canopy.



Both underside canopies and side screens are offered in a variety of fabrics. Please contact your Design Consultant to see all of the currently available options.



Straight Top Freestanding Pergola with
Underside Shade Canopy

OUTDOOR KITCHENS

DANVER™

Nothing compares to outdoor dining and entertaining in your own gorgeous, outdoor kitchen. We'll work closely with you to plan a layout and design that will bring your vision to life. And yes, we fully install everything so all you need to worry about is your guest list.

Walpole Outdoors offers the ability to custom design your own kitchen—from layout to cabinet styles, paint colors, and appliances.

- Stainless steel cabinets available in a range of powder-coated finishes with European-style cabinetry
- Match the color scheme, door styles, and decor of your interior kitchen
- Choose from a full range of specialty cooking and cooling appliances



Custom design kitchen featuring Hampton style cabinets with power burner grill

Door Styles

Three distinct door styles are available as options for custom kitchens.



Hampton



Key West



Venice



Custom design kitchen featuring Key West style cabinets

Walpole Outdoors Signature Kitchens

Walpole Outdoors Signature Kitchens are the pinnacle of quality, engineering, and style in outdoor stainless steel kitchen cabinetry, proudly made in the U.S.A. With seven available predetermined layouts, we've simplified the design process by bringing together our most functional and versatile cabinet configurations with six designer-curated powder coat finishes. Customize your Walpole Outdoors Signature Kitchen to suit your outdoor cooking and entertainment needs.

CUSTOMIZE YOUR KITCHEN IN FOUR SIMPLE STEPS

1 Select Layout:

Find the ideal kitchen cabinet and appliance configuration for your outdoor space. The seven available layouts address a variety of appliance and storage needs.

2 Determine Grill Size:

Kitchens are designed to fit 30"-36" or 42" grills from select manufacturers. Grill size will determine the width of the grill cabinet as well as the overall width.

3 Select Color:

Choose one of six unique designer-curated powder coat finishes for your cabinets. Match the aesthetic of your outdoor environment or introduce a splash of color. We also have six countertop colors available.

4 Back Panel Option:

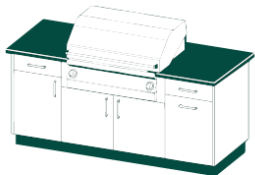
If the back of your kitchen is going to be visible, add powder coated back panels for a finished look from all angles.



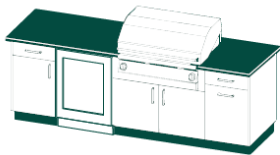
Oasis in Metallic Bronze Matte

Layout Options

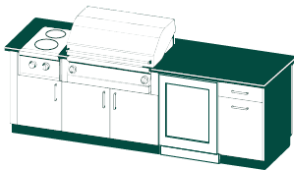
Find the ideal kitchen cabinet and appliance configuration for your outdoor space. Whatever your style of cooking and entertaining, we have the layout for you. Ranging from an elegant grilling station solution to a sprawling outdoor kitchen that will be the heart of your outdoor spaces, there's a Signature Kitchen layout to suit your needs.



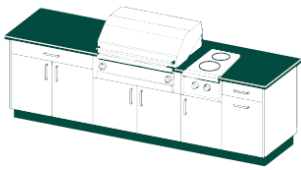
Haven



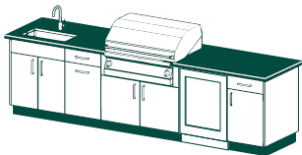
Arbor



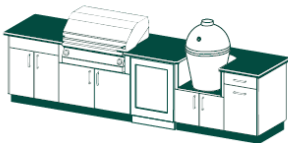
Veranda



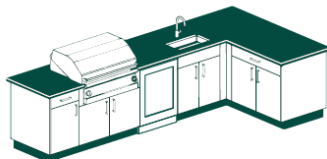
Retreat



Oasis



Grove



Alcove

Color Selections

Choose from six popular powder coat finishes to add beauty and reduce the maintenance of your stainless steel outdoor kitchen. High quality 304-grade powder coated stainless steel is designed to withstand the elements. These designer-curated colors are sure to make an impression for years to come. The hand-picked swatches are versatile and intended to work with various home and landscape styles as well as different climates and environments.



Seashell White



Pearl Night Blue



Metallic Bronze Matte



Midnight Matte



Champagne 304

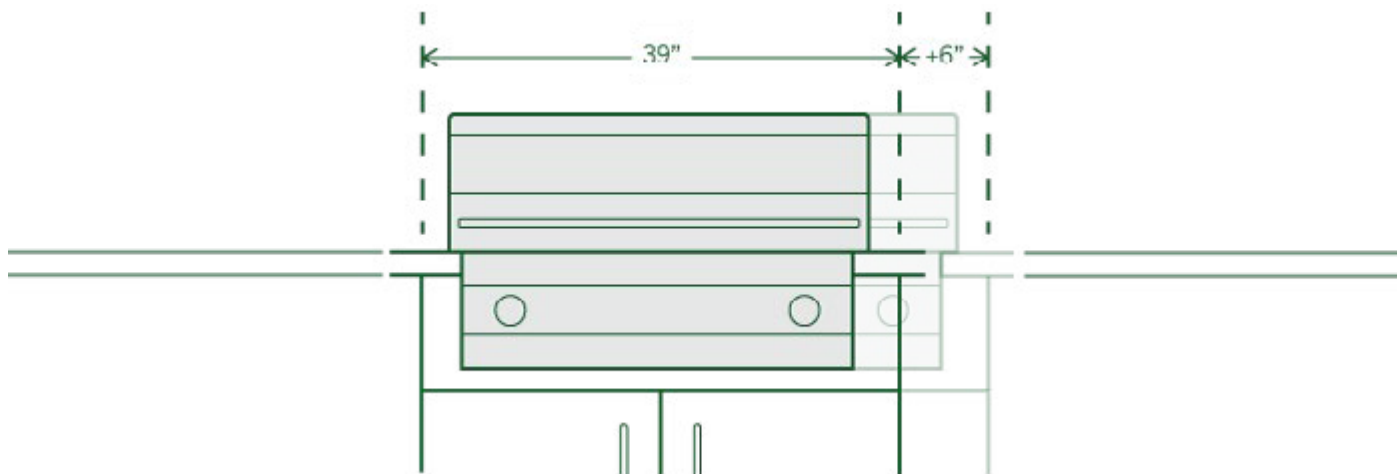


Slate

Grill Size

Our Signature Kitchens are designed to accommodate 30-36" or 42" grills from most manufacturers. To simplify the ordering process, we have partnered with Alfresco Luxury Grills to offer customers the option to purchase an Artisan Professional Series grill through Walpole Outdoors. When placing your order, please specify the size of desired grill. If you are not purchasing an Artisan Professional Series grill, please specify the make and model of your grill so that our engineers can provide a custom trim kit that ensures a seamless fit for your outdoor kitchen.

The grill size determines the size of the cabinet designed to accommodate it: 30-36" grills require a 39" cabinet, while 42" grills require a 45" cabinet. *Please note that the Grove and Alcove outdoor kitchens are only compatible with 30-36" grills.*



Back Panel Option

If your outdoor kitchen is to be positioned so that the back of it is visible, we recommend ordering powder coated back panels for a finished look from all angles. Your cabinets might be positioned against a wall or other feature, in which case rear finishing panels are not required.

Rear finishing panels extend the powder coat finish to the back of the cabinets for The finished back of the cabinets for a consistent 360° look.



Appliances

To complete your Signature Kitchen, the appliances shown below are available for purchase with certain models. Check the specifications for your selected design to see which appliances are intended for that layout.



ARTISAN PROFESSIONAL GRILL

Heavy-duty 304 18-8 stainless burners create evenly distributed extreme high heat to the cooking surface. Stainless steel cooking grates and switches. Control panel lighting.



DUAL SIDE BURNER

Two high-performance burners with 110V electronic ignition. All commercial stainless steel with heli-arc welded seams. Precision knob lighting.



UNDERCOUNTER REFRIGERATOR

Choose either the Artisan Refrigerator or the Simmons Outdoor Beverage Center with glass door (shown in Layouts on following pages).



OVAL LARGE CHARCOAL GRILL

Made of premium grade ceramic that offers superior heat, moisture, and flavor retention. Highest sitting lid available to allow for cooking whole chickens and turkeys vertically.

Cosentino Dekton Countertops

To simplify the ordering process, customers can choose their Signature Kitchen countertop from among these six selections. Dekton is the ultimate surface for kitchen countertops: it is highly resistant to stains, scratches, and heat, and available in a wide range of colors. Please note that countertops may also be sourced independently by the customer if desired.



AERIS

Light tones with cream-colored detail



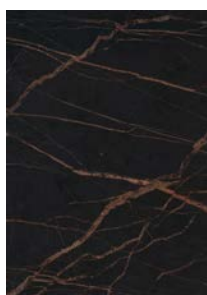
KELYA

Inspired by dark marbles with light streaks



TRILIUM

Inspired by volcanic stones with black and gray touches



LAURENT

Dark brown background with veins of gold



SOMNIA

Warm browns and rusty whites merge with black tone



NEURAL

Light, cream-toned base with fine, pale veins



Grove Signature Kitchen in Slate

Appliances, counter tops, and plumbing must be sourced separately. Starting prices and dimensions listed reflect layouts designed with a 39" grill base cabinet and without rear finishing panels. Dimensions listed in parentheses reflect layouts designed with a 45" grill base cabinet (width) and with rear finishing panels (depth). Height dimensions include a 1½" counter top and are subject to change depending on counter top thickness.



HAVEN



OASIS



VERANDA



GROVE



ARBOR



ALCOVE



RETREAT

Our stainless steel cabinets are designed to combine long-lasting functionality with style. Weather-resistant stainless steel lends itself well to perennial all-season use. All doors and drawers are fitted with weather-resistant gaskets.

SIGNATURE KITCHENS

Haven

Functioning as a compact cooking station, Haven is a grill-centric configuration that flanks the centerpiece with a trash pull-out cabinet and plenty of storage space.

76½" W x 36½" H x 27⅞" D
(82½" W) (28⅝" D)

- Champagne 304
- 36" Artisan grill
- Dekton countertop in Kelya
- No backplate



Arbor

Designed with entertainment in mind, the Arbor adds a refrigerator space and additional workspace on the left side of the grill cabinet. It is rounded out with a trash pull-out cabinet and storage.

100¾" W x 36½" H x 27⅞" D
(106¾" W) (28⅝" D)

- Pearl Night Blue
- 36" Artisan grill
- Outdoor Beverage Center with glass door
- Dekton countertop in Kelya
- No backplate



Veranda

Veranda offers additional cooking capabilities with a side burner cabinet next to the grill cabinet. It includes a refrigerator space and a trash pull-out cabinet for easy food prep and clean-up.

103" W x 36½" H x 27⅞" D
(109" W) (28⅝" D)

- Seashell White
- 36" Artisan grill
- Outdoor beverage center
- Dual side burner
- Dekton countertop in Kelya
- No backplate



Retreat

This configuration is generous with storage and counter space. It includes a door/drawer combination base cabinet, a side burner cabinet, and a trash pull-out cabinet.

112½" W x 36½" H x 27⅞" D
(118½" W) (28⅝" D)

- Midnight Matte
- 36" Artisan grill
- Dual side burner
- Dekton countertop in Kelya
- No backplate



SIGNATURE KITCHENS

Grove

The Grove is the ultimate cooking solution. Featuring cabinets that accommodate a sink, grill, refrigerator, trash pull-out bin, and a smoker, you will have all the appliances you need for food prep and cooking. Note: This layout only fits 36" grills.

136 $\frac{3}{4}$ " W x 36 $\frac{1}{2}$ " H x 27 $\frac{7}{8}$ " D
(28 $\frac{5}{8}$ " D)

- Slate (finish)
- 36" Artisan grill
- Outdoor Beverage Center
- Oval large charcoal grill
- Dekton countertop in Kelya
- No backplate



Alcove

The most generous layout for storage, Alcove is complete with cabinetry for a grill, sink, and refrigerator. This L-shaped configuration offers ample counter space for all your cooking requirements. Note: This layout only fits 36" grills.

142" W long end, 70" W short end x 36 $\frac{1}{2}$ " H x 27 $\frac{7}{8}$ " D
(28 $\frac{5}{8}$ " D)

- Pearl Night Blue
- 36" Artisan grill
- Outdoor beverage center
- Dekton countertop in Kelya
- No backplate



Oasis

The complete cooking and entertainment package, Oasis features cabinets that accommodate a sink, a refrigerator, a grill, a trash pull-out bin, and extensive storage.

127³/₄" W x 36¹/₂" H x 27⁷/₈" D
(133³/₄" W) (28⁵/₈" D)

- Metallic Bronze Matte
- 36" Artisan grill
- Outdoor beverage center
- Dekton countertop in Kelya
- No backplate

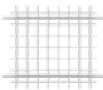
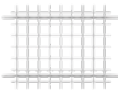

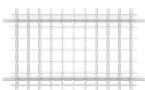



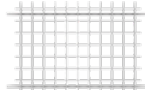

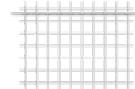
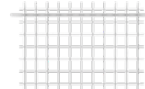

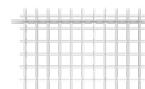
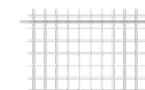


Oasis Signature Kitchen in Slate



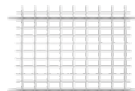






FREESTANDING PERGOLA

Combine pergola top with columns, beam and lath end cuts to configure pergola. Dimensions are on center.

STRAIGHT TOP

			
8'W x 10'L 795331	8'W x 12'L 795332	8'W x 14'L 795333	8'W x 15.5'L 795334
			
10'W x 10'L 795385	10'W x 12'L 795386	10'W x 14'L 795387	10'W x 15.5'L 795383
			
	12'W x 12'L 795388	12'W x 14'L 795389	12'W x 15.5'L 795398
			
		14'W x 14'L 795395	14'W x 15.5'L 795399
			
			15.5'W x 15.5'L 795397

ARCH TOP

			
10'W x 10'L 795390	10'W x 12'L 795391	10'W x 14'L 795392	10'W x 15.5'L 795381
			
	12'W x 12'L 795393	12'W x 14'L 795394	12'W x 15.5'L 795380
			
		14'W x 14'L 795396	14'W x 15.5'L 795382

STRAIGHT TOP SHADE CANOPY

MANUAL

8'W x 10'L	2FM101
8'W x 12'L	2FM102
8'W x 14'L	2FM103
8'W x 15.5'L	2FM104
10'W x 10'L	2FM201
10'W x 12'L	2FM202
10'W x 14'L	2FM203
10'W x 15.5'L	2FM204
12'W x 12'L	2FM302
12'W x 14'L	2FM303
12'W x 15.5'L	2FM304
14'W x 14'L	2FM403
14'W x 15.5'L	2FM404
15.5'W x 15.5'L	2FM504

MOTORIZED

8'W x 10'L	2FX101
8'W x 12'L	2FX102
8'W x 14'L	2FX103
8'W x 15.5'L	2FX104
10'W x 10'L	2FX201
10'W x 12'L	2FX202
10'W x 14'L	2FX203
10'W x 15.5'L	2FX204
12'W x 12'L	2FX302
12'W x 14'L	2FX303
12'W x 15.5'L	2FX304
14'W x 14'L	2FX403
14'W x 15.5'L	2FX404
15.5'W x 15.5'L	2FX504

ARCH TOP SHADE CANOPY-MANUAL

MANUAL

10'W x 10'L	2FM201A
10'W x 12'L	2FM202A
10'W x 14'L	2FM203A
10'W x 15.5'L	2FM204A
12'W x 12'L	2FM302A
12'W x 14'L	2FM303A
12'W x 15.5'L	2FM304A
14'W x 14'L	2FM403A
14'W x 15.5'L	2FM404A



Freestanding Arched Pergola

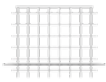


Attached Straight Top Pergola

ATTACHED PERGOLA

Combine pergola top with columns, beam and lath end cuts to configure pergola. Dimensions are on center.

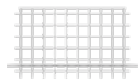
STRAIGHT ATTACHED PERGOLA TOP



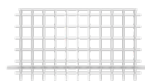
8'W x 10'L
795335



8'W x 12'L
795336



8'W x 14'L
795337



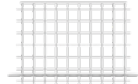
8'W x 15.5'L
795338



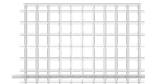
10'W x 10'L
795360



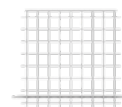
10'W x 12'L
795361



10'W x 14'L
795362



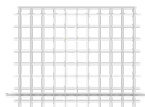
10'W x 15.5'L
795367



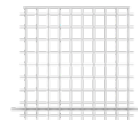
12'W x 12'L
795363



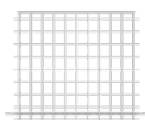
12'W x 14'L
795364



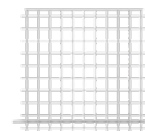
12'W x 15.5'L
795368



14'W x 14'L
795365



14'W x 15.5'L
795369



15.5'W x 15.5'L
795366

STRAIGHT TOP SHADE CANOPY

MANUAL

8'W x 10'L	2FM101
8'W x 12'L	2FM102
8'W x 14'L	2FM103
8'W x 15.5'L	2FM104
10'W x 10'L	2FM201
10'W x 12'L	2FM202
10'W x 14'L	2FM203
10'W x 15.5'L	2FM204
12'W x 12'L	2FM302
12'W x 14'L	2FM303
12'W x 15.5'L	2FM304
14'W x 14'L	2FM403
14'W x 15.5'L	2FM404
15.5'W x 15.5'L	2FM504

MOTORIZED

8'W x 10'L	2FX101
8'W x 12'L	2FX102
8'W x 14'L	2FX103
8'W x 15.5'L	2FX104
10'W x 10'L	2FX201
10'W x 12'L	2FX202
10'W x 14'L	2FX203
10'W x 15.5'L	2FX204
12'W x 12'L	2FX302
12'W x 14'L	2FX303
12'W x 15.5'L	2FX304
14'W x 14'L	2FX403
14'W x 15.5'L	2FX404
15.5'W x 15.5'L	2FX504

PERGOLA COLUMNS

SQUARE



8" SQ x 8'H
795354



8" SQ x 10'H
795355

10" SQ x 8'H
795344

10" SQ x 10'H
795343

PANELED



8" SQ x 8'H
795356



8" SQ x 10'H
795357

10" SQ x 8'H
795342

10" SQ x 10'H
795341

ROUND TAPERED



10" DIA x 8'H
795358



10" DIA x 10'H
795359

LOCKHART PERGOLA



10'W x 12'L	795730
10'W x 12'L + privacy panel	795731
10'W x 14'L	795732
10'W x 14'L + privacy panel	795733
10'W x 15.5'L	795734
10'W x 15.5'L + privacy panel	795735
12'W x 14'L	795736
12'W x 14'L + privacy panel	795737
12'W x 15.5'L	795738
12'W x 15.5'L + privacy panel	795739
14'W x 15.5'L	795740
14'W x 15.5'L + privacy panel	795741

AMBIANCE LOUVERED ROOM - KIT



4" x 4" POSTS

10'W x 10'L	32AMBKIT10
10'W x 12'L	32AMBKIT12

Max Single Bay 10'x12'
with snow load

Max Single Bay 10'x12'
no snow load

Snow Load Rating (closed) 35PSF

Wind Rating (closed) 120 mph+

WESTERN RED CEDAR PERGOLA



10'W x 10'L	140250
10'W x 12'L	140252
10'W x 14'L	140254
12'W x 12'L	140256
12'W x 14'L	140257
14'W x 14'L	140258

AMBIANCE LOUVERED ROOM - ELITE

Pergola sizes are customized to fit the space.



8" x 8" POSTS

BY SQ FT	32AMBELPERG
----------	-------------

Max Single Bay 12'x18'
with snow load

Max Single Bay 15'x23'
no snow load

Snow Load Rating (closed) 30-55 PSF

Wind Rating (closed) 130-175 mph



Ambiance Louvered Room Elite with LED lights and fan bar

We're an extension of your team.

For nearly a century, Walpole Outdoors has been synonymous with exceptional craftsmanship, creating premium, handcrafted outdoor products and structures. As a trusted partner to skilled industry professionals, we offer a seamless collaboration experience — from concept to installation — ensuring that every detail meets your exacting standards.

Solutions for your customer. Support for your business.



**DEDICATED
SUPPORT**

A team ready to assist you throughout the project lifecycle.

**LAYOUT
ASSISTANCE**

Expert guidance to help bring your design ideas to life.

**ESTIMATING
TOOLS**

Access to advanced tools for accurate project cost estimation.

**DETAILED DRAWINGS
AND SPECIFICATIONS**

Comprehensive plans and specs to ensure smooth implementation.



LIVE OUTSIDE EXPECTATIONS

For those who seek the extraordinary in both product and service, Walpole Outdoors stands in a class by itself.

Our artisans combine modern technology with time-honored techniques, ensuring an unwavering commitment to quality.

One of a kind, not more of the same. Our customizable designs give you the freedom to create.

Discerning eyes recognize the artistry and precision that define Walpole Outdoors products. High-quality craftsmanship is our symbol of distinction.

We are known for our attention to detail — in the products we create, and with every customer interaction.

Walpole Outdoors™

255 PATRIOT PLACE, FOXBOROUGH, MA 02035



Visit walpoleoutdoors.com

Find even more inspiration, learn about our unique capabilities, and purchase items to be shipped nationwide from our online catalog.

Call (866) 447-2372

Talk to us today for more information before placing an order or to schedule a complimentary in-person or virtual design consultation.

Visit a Walpole Outdoors Design Center

Walpole Outdoors has design centers across the country where you can see our products and structures on display and speak with a knowledgeable consultant. Ask your local showrooms about installation and delivery of your products.

DESIGN CENTERS

Corporate Headquarters

255 Patriot Place, Foxborough, MA 02035
508.474.8450

Massachusetts

958 E. Falmouth Hwy, E. Falmouth, MA 02536
508.444.8016

Connecticut

181 Westport Ave, Norwalk, CT 06851
203.255.9010

Rhode Island

1350-A Bald Hill Rd, Warwick, RI 02886
401.519.7923

New York

200 Glen Cove Rd, Old Brookville, NY 11545
516.363.1290

New Jersey

540 Tabor Rd, Morris Plains, NJ 07950
973.828.8196

Virginia

102 Executive Dr, Bay C, Sterling, VA 20166
301.983.6040

PARTNERS

Florida

Philips Garden Store, Jacksonville, FL
Treasure Cove, Sarasota, FL
MJ Weremay Design, Ormond Beach, FL
Seaside Exteriors, Hobe Sound, FL
Artisan Outdoor Living, Wildwood, FL

Massachusetts

Pine Harbor, Hyannis, MA
Pine Harbor, Harwich, MA

New Jersey

Bain's Outdoor Living, Rumson, NJ

New York

Bay Gardens, East Moriches, NY

North Carolina

Structerra Outdoor, Raleigh, NC

Pennsylvania

Bucks Country Gardens, Doylestown, PA

South Carolina

Structerra, North Charleston, SC

