



# Flowable Developer Certification

Certification Preparation

# If you click on the “Create” button, which type of model will be created?

Open or create a new model

Create Import Include Generate

Model Type \*

Form

Name \*

Key \*

Palette type

Flowable Work Forms

Tags

Select...

Description

**B** *I* {}

Template

Select...

You can create a new model by choosing the type of model and giving it a name. Its key can be auto-generated from its name or you can specify one yourself. You also have the option of importing a model by uploading a file of the correct format.

For models that are designed with a palette and canvas, the palette type can be chosen when multiple palettes are installed in the system. This palette determines which Flowable product the model will be publishable to.

Models can also be tagged for easier querying later on and can get a free-form description to provide more details about it.

Create Cancel

Process

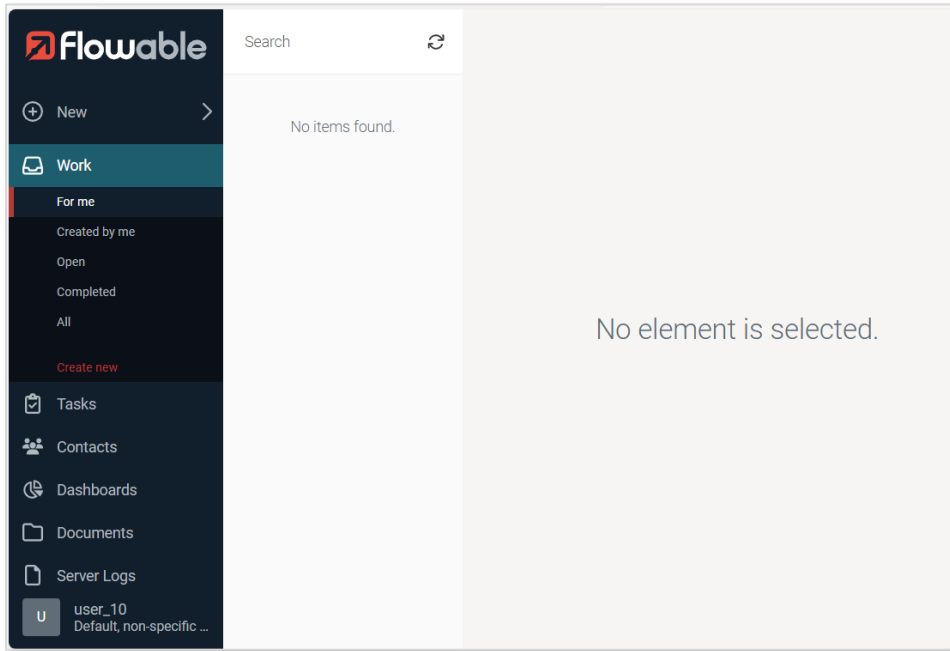
Case

Form

Decision Table



# Which Flowable tool do you see on the following screenshot?



- Flowable Control
- Flowable Inspect
- Flowable Work
- Flowable Design
- None of the answers are correct



# In Flowable there are only three types of models: Process, Case and Form.

True

False



# Which statement is true?

- Instances and models are the same thing.
- Definitions are created based in instances.
- Instances are created based on definitions.
- Models are created based on definitions.



# Which statements are true?

- Workspaces can contain multiple Apps.
- Workspaces can contain multiple Models.
- Workspaces can be public or private.
- Workspaces can only be public.



# Which statements are true?

- Apps **contains** multiple models.
- Apps contain only java code.
- Apps are the “unit of deployment”.
- Apps can be public or private.



# Which statement is true?

- Flowable Control is a business end user application.
- Flowable Control is used to create models.
- Flowable Control is used to monitoring Flowable **environment**.
- Flowable Control is used to control the standards.





# Which statements are true?

- Flowable Design is used to run process and case instances.
- Flowable Design is used to create java code automatically.
- Flowable Design is used to create Forms.
- Flowable Design is used to create Process Models.



# Which statements are true?

- Flowable Work is used to create process models.
- Flowable Work is used by business end users.
- Flowable Work is used to create process definitions.
- Flowable Work is used to create process or case instances.



# Is this statement true? By default, the jobs created by an async task will be retried 10 times **if fails**?

- No, they will retry only 2 times
- Yes
- No, they will retry only 3 times
- No, there is no automatic retry mechanism

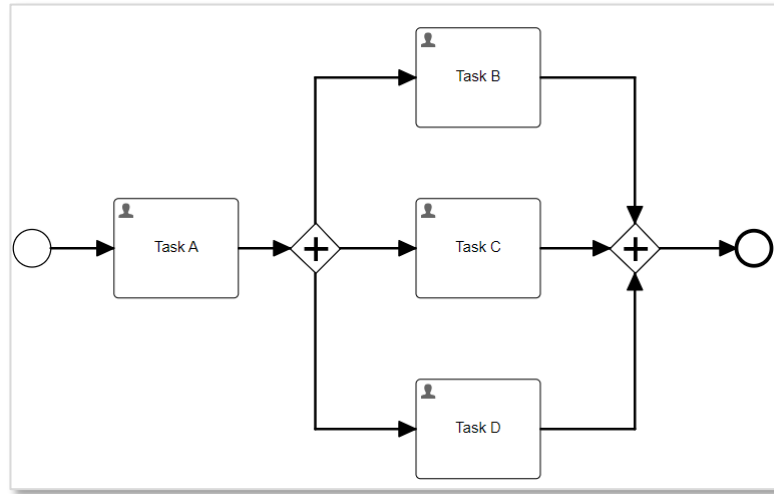


# Which of the following concepts is related to the “Async” attribute in BPMN?

- Instances
- Tokens
- Jobs
- Business Key



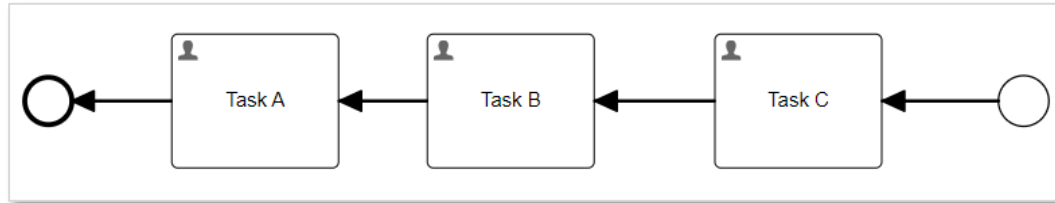
# Which statements about the process are correct?



- Task B, C and D will start in parallel.
- The gateways are exclusive.
- The process will be completed after **complete** Task B.
- There are only User Tasks.**



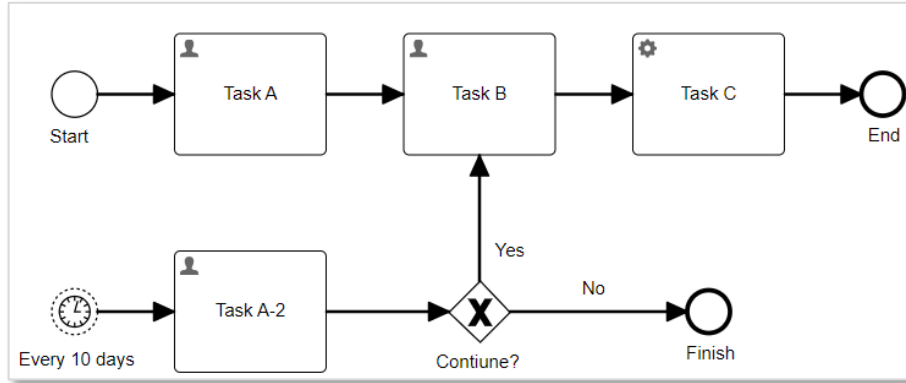
# Which statements about the process is correct?



- Task B will start after Task A is completed.
- Task A will be the first task of the process.
- Task B will start after Task C is completed.
- None of the answers are correct



# Which statements about this process are correct?



- The process only can be started manually.
- The process is either started manually or automatically based on a timer event.
- The process is not valid, is not possible to have two end events.
- The process will start automatically every 10 days.



# The service “cmmnRuntimeService” is responsible for... (choose the best option)

- Querying process instances
- Querying case instances
- Querying task instances
- Querying audit instances





# The service “RepositoryService” is responsible for... (choose the best option)

- Creating process instances
- Creating case deployments
- Creating process deployments
- Creating case instances



# Which of the following code snippets will set a variable in a case?

- `runtimeService.setVariable(processId, 'varName', 'value')`
- `processService.setVariable(processId, 'varName', 'value')`
- `taskService.setVariable(caseId, 'varName', 'value')`
- `cmmRuntimeService.setVariable(caseId, 'varName', 'value')`



# Which of the following statements about the code snippet below is true?

```
var process = runtimeService.createProcessInstanceQuery()  
    .processDefinitionKey("myDummyProcess")  
    .list()
```

- This query will return all case instances with this key.
- This query will return all the task instances with this key.
- This query will return all process instances with this key in all versions.
- This query will return all process instances with this key but only the ones started with the latest version.



# Flowable Inspect supports you in... (choose the best option)

- Creating process models
- Creating forms
- Testing process and case models
- Creating dashboards



# What does the `@Deployment` annotation do?

- ❑ It deploys a process definition located on the class path
- ❑ It starts the BPMN Engine with the data from the database
- ❑ It activates “auto deployment” mode
- ❑ It evicts the deployment cache before the test



## Transient variables are... (choose the best option)

- A special variable type in Flowable
- A variable that will be stored in memory but not persisted
- A variable that will be stored in memory and persisted
- A variable that will be stored and persisted only in Elasticsearch



# Which of the following are variable types in Flowable?

- double
- varchar
- localdate
- float



# Is the following statement true? Having Elasticsearch installed is a prerequisite to install Flowable locally?

- Yes, otherwise Flowable Work won't boot.
- No, Elasticsearch is optional.





# Which of the following maven modules is part of a typical Flowable Java project?

- Flowable Core Components
- Flowable License Server
- Flowable Design
- Flowable Tasks



# Which of the following statements are true?

- `${var:get('firstName')}` will return an error if the `firstName` variable doesn't exist.
- `${var:get('firstName')}` will return the `firstName` or null if the variable doesn't exist.
- `${var:get('firstName')}` is not a valid expression in Flowable.
- `${var:get 'firstName'}` will create the `firstName` variable.



# Delegate Expression is a type of implementation of a... (choose the best option)

- User Task
- Case Task
- Service Task
- Process Task



# Which of the following is a valid JUEL expression assuming “email” is a string variable?

- `${email.search('myDomain')}`
- `${email.set('myDomain')}`
- `${email.contains('myDomain')}`
- `${email.remove('myDomain')}`



# Which of the following approaches best describes the Flowable APIs?

- JavaScript / GraphQL API
- .NET API / REST API
- Java API / REST API
- C# API / GraphQL API



# Is it possible to start a process instance through Flowable APIs?

- Yes.
- No, starting a process instance is only possible using Flowable Work.



# Which of the following endpoints is part of the standard Flowable REST API?

- /process-api/process-instances/{processInstanceId}
- /process-api/runtime/process-instances/{processInstanceId}
- /process-api/runtimeService/process-instances/{processInstanceId}
- /bpmn-api/runtime/process-instances/{processInstanceId}



