



JANUARY 2026 POSSESSION



THE BRAVO 1600 SQ.FT.

659 Chelsea Pier Run



3 Bedrooms



2½ Bathrooms

OPTIONS INCLUDED IN THIS HOME ARE:

- South-facing backyard homesite
- Open concept main floor
- Hardwood, tile & carpet throughout
- Spacious walk-in pantry in kitchen
- 4-Piece owner's ensuite
- Legal secondary suite rough-ins in basement with separate entry
- Rear deck with stairs to grade & aluminum railing
- 9' Foundation

COME VISIT OUR SHOWHOME

419 Chelsea Chelsea Port Crossing, Chestermere AB
Call Matthew Lysaght or David Bell today at
403.651.9666 or email at chelsealined@tricohomes.com



THE RAEYA

SHOWHOME HOURS:

Mon - Thurs: 2pm - 8pm

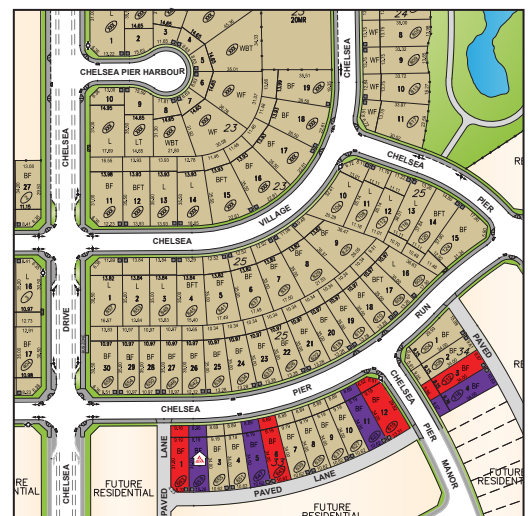
Fri: Closed

Sat - Sun: 12pm - 5pm

ASK ABOUT OUR TRICO RED CARD REWARDS



**YOU DECIDE
HOW TO REWARD
YOURSELF!**



CHELSEA
CHESTERMERE

**Trico
Homes™**
The Heart of Homebuilding®



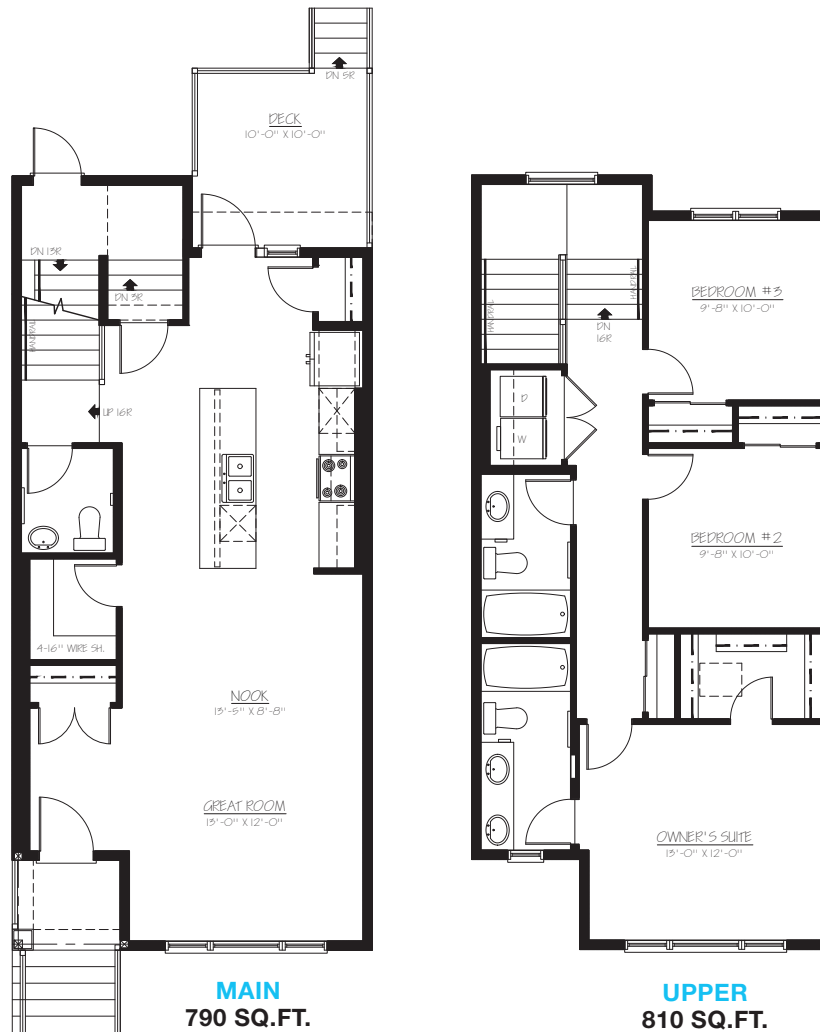
tricohomes.com



THE BRAVO

1600 SQ.FT.

659 Chelsea Pier Run



Renderings are artist's conceptions only and may vary by community and lot selection. Prices, floorplans, specifications and dimensions are approximate and are subject to change without notice. E.&O.E. © All rights reserved, including the right of reproduction in the whole or in part without the permission of Trico Homes.

Plan updated August 19, 2025



tricohomes.com