

  
← 25' →  
Min. Lot Width

 3 Bedrooms

 2½ Bathrooms

# THE ROWAN II DUPLEX

1730 SQ.FT.

Elements Specification

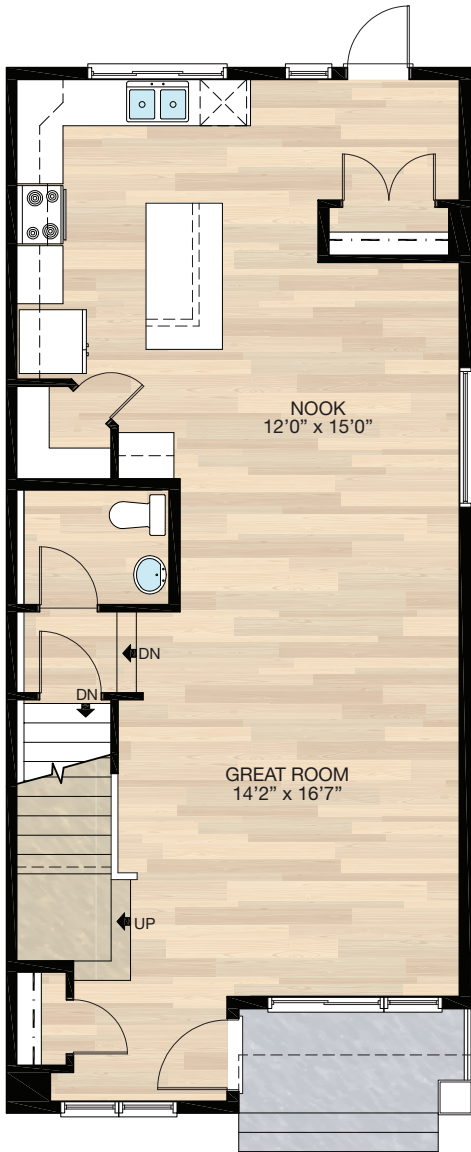
Elite Specification



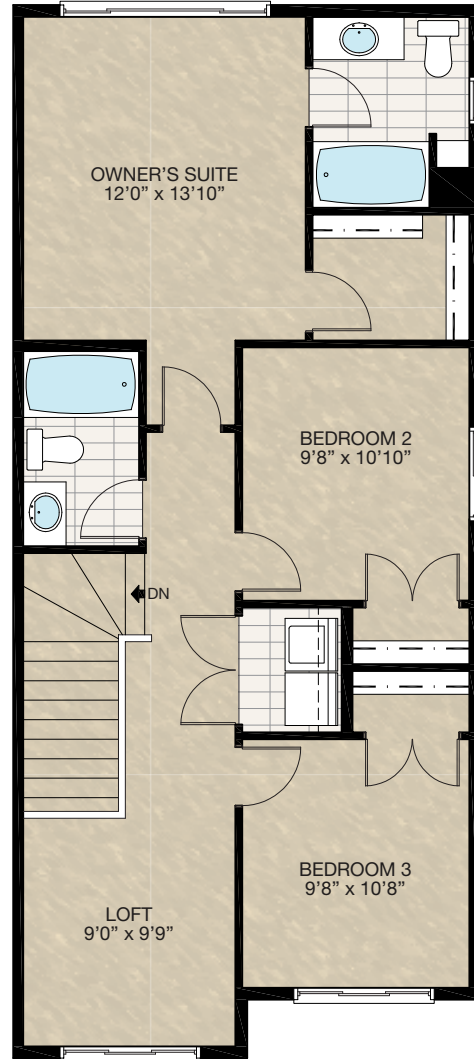
Trico Homes™  
The Heart of Homebuilding®

# STANDARD PLAN

THE  
ROWAN II  
DUPLEX  
1730 SQ.FT.



**MAIN**  
855 SQ.FT.



**UPPER**  
875 SQ.FT.

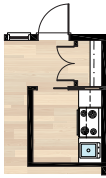
HARDWOOD	DECK	CARPET	CONCRETE	TILE	LAMINATE	LINO
----------	------	--------	----------	------	----------	------

# FEATURED OPTIONS



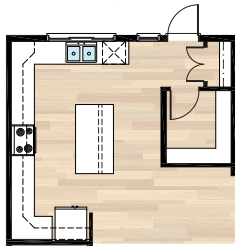
## SELECT-1 SPICE KITCHEN OPTION

- Move closet
- Add spice kitchen with 2'8" pocket door
- Door and window need to shift over to allow for closet
- Add range & hoodfan
- Add 3'8" of lower cabinets & 1'6" of upper cabinets, plus cabinet over hoodfan
- Add sink
- Relocate plug from back entrance & add a 110 plug and a 220 plug



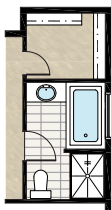
## SELECT-2 KITCHEN OPTION

- Move closet
- Door and window need to shift over to allow for closet
- Delete corner pantry
- Add new pantry
- Increase cabinetry



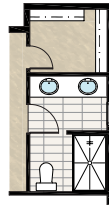
## SELECT-3 FOUR-PIECE ENSUITE OPTION

- Add 2'0" cantilever
- Additional 15 sq.ft.
- Flip ensuite & closet location
- Delete standard tub/shower unit
- Add 48" x 36" shower with sliding door
- Add 60" x 32" soaker tub
- Change window from 24" x 48" VSL to 48" x 40" P



## SELECT-4 FOUR-PIECE ENSUITE OPTION 2

- Add 2'0" cantilever
- Flip ensuite and closet location
- Delete standard tub/shower unit
- Add 60" x 36" FG base shower with tiled walls & 5ml sliding door
- Extend vanity & add second sink
- Add second vanity light & GFI plug
- Add down light to shower
- Window 24" x 48" VSL changed to 24" x 40" VSL



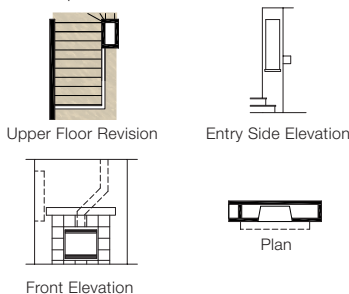
## SELECT-5 SUPER SHOWER OPTION

- Add 2'0" cantilever
- Flip ensuite and closet location
- Delete standard tub/shower unit
- Add 80" x 36" tile & glass shower with bench
- Delete window
- Add second light & fan to water closet



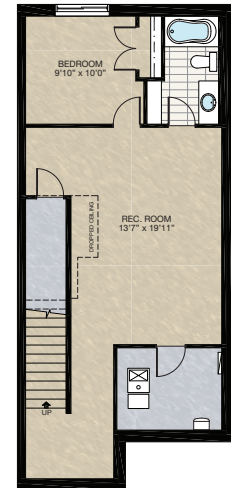
## SELECT-6 GREAT ROOM FIREPLACE OPTION

- Full height wall to inside of stairwell on main floor
- Add fireplace with 12" tile facing & MDF paint grade mantle (fireplace facing & mantle materials to be selected at design centre)
- Centre light & window with the fireplace
- Add void for fireplace vent to inside corner at top of stairs



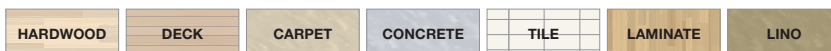
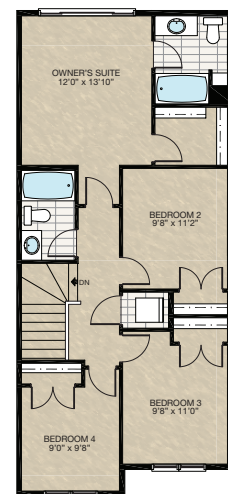
## SELECT-7 BASEMENT DEVELOPMENT OPTION

- Basement development adds 618 sq.ft.
- Finished basement stairwell
- Delete 2'8" door top of stairwell
- Add extra riser to stairwell for 9'0" basement ceiling with 8'9" headroom
- Window changes from 60" x 24" to 60" x 36" DHSL



## SELECT-8 FOUR BEDROOM UPPER FLOOR OPTION

- Removes loft area and replace with bedroom 4

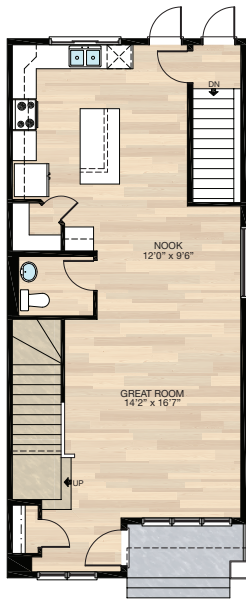


# FEATURED OPTIONS

THE  
ROWAN II  
DUPLEX  
1730 SQ.FT.

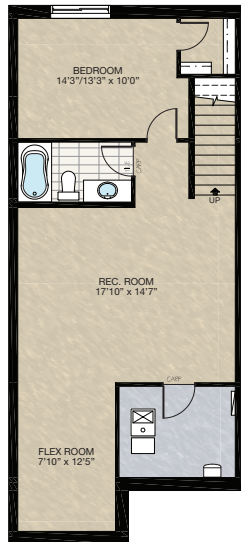
## SELECT-9 SEPARATE STAIR OPTION

- Add separate stair to basement & delete current basement stairwell
- Half bath entrance moves and dropped floor is deleted



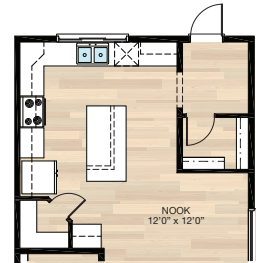
## SELECT-10 BASEMENT DEVELOPMENT OPTION (ONLY COMBINED WITH SELECT-10)

- Basement development adds 666 sq.ft.
- Finished basement stairwell
- Delete 2'8" door top of stairwell
- Add extra riser to stairwell for 9'0" basement ceiling with 8'9" headroom
- Changed basement window from 60" x 24" to 60" x 36" DHSL



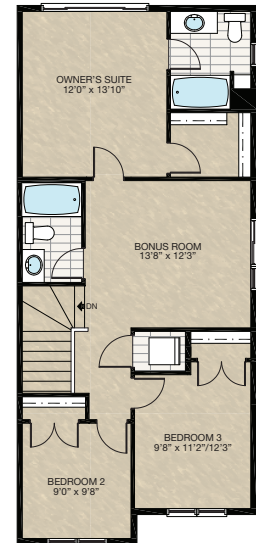
## SELECT-11 MUDROOM OPTION

- Increase rear closet size
- Delete rear window
- Extend kitchen cabinets



## SELECT-16 BONUS ROOM OPTION

- Remove loft area & replace with bedroom 2
- Delete 60" x 48" HSL window
- Add 24"/48" x 24" (P/HSL) window to bonus room



Trico Homes is a local home builder, with new single and multi-family homes for sale in Calgary, Okotoks, Chestermere, Cochrane, Airdrie and DeWinton. Offering a great selection of starter, move-up, semi-estate and ultra-estate models in numerous communities, you'll find the house that's just right for you! Look for this model and many others in Ambleton, Arbour Lake, Belmont, Carrington, Chelsea, Cornerbrook, D'Arcy, Dawson's Landing, Glacier Ridge, Hamilton Heights, Homestead, Legacy, Midtown, Pine Creek, Precedence, Rivercrest, Seton, Sirocco, Verona West Townhomes, West83 Townhomes and Wolf Willow.



Renderings are artist's conceptions only and may vary by community and lot selection. Prices, floorplans, specifications and dimensions are approximate and are subject to change without notice. E.&O.E. © All rights reserved, including the right if reproduction in the whole or in part without the permission of Trico Homes.

Plan updated as of March 20, 2023.



tricohomes.com