



MARCH 2025 POSSESSION



THE CAMBRIDGE 26

2325 SQ.FT.

73 Wolf Hollow Villas SE



3 Bedrooms



2½ Bathrooms



Double Garage

OPTIONS INCLUDED IN THIS HOME ARE:

- Homesite backing onto Fish Creek Provincial Park
- Close to parks, trails & Blue Devil Golf Club
- Main floor flex room
- Upgraded built-in appliances in kitchen
- Full-height cabinetry in kitchen
- Quartz kitchen countertops
- Electric fireplace in great room
- Open-to-below from upper central bonus room
- 5-Piece owner's ensuite with glass & tile shower
- Spacious walk-in closet
- Separate side entrance
- Sunshine basement
- 9' Foundation
- Rear deck with glass panel railings

COME VISIT OUR SHOWHOMES

103 & 107 Wolf Creek Rise SE, Calgary, AB

Call Desirae Gersheid today at 403.457.0856 or email at wolfwillow@tricohomes.com



SHOWHOME HOURS:

Mon - Thurs: 2pm - 8pm

Fri: Closed

Sat - Sun: 12pm - 5pm

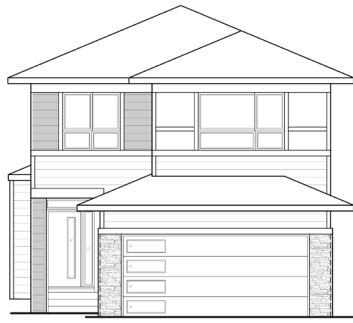
PLUS RECEIVE YOUR OWN TRICO RED CARD



**& ENJOY INCREDIBLE
ONGOING SAVINGS &
REWARDS FROM OUR
PARTNERS & RETAILERS**



tricohomes.com



THE CAMBRIDGE 26

2325 SQ.FT.

73 Wolf Hollow Villas SE



MAIN
1023 SQ.FT.

UPPER
1302 SQ.FT.



Platinum member
2004 - 2024



Renderings are artist's conceptions only and may vary by community and lot selection. Prices, floorplans, specifications and dimensions are approximate and are subject to change without notice. E.&O.E. © All rights reserved, including the right if reproduction in the whole or in part without the permission of Trico Homes.

Plan updated October 10, 2024



The Heart of Homebuilding®



tricohomes.com