

EXCLUSIVE & RARE  
ONLY  
18  
DE WINTON, ALBERTA



HAMILTON  
HEIGHTS



# The Birmingham

3030 SQ.FT.

3 BEDROOMS | 2.5 BATHS | 3 CAR GARAGE

A Signature Home Collection exclusively by



# Main Floor

1444 Sq.Ft.


THE  
BIRMINGHAM  
3030 SQ.FT.



# Upper Floor

1586 Sq.Ft.

 3 Bedrooms

 2½ Bathrooms

 3 Car Garage



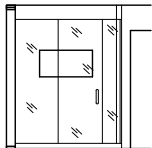
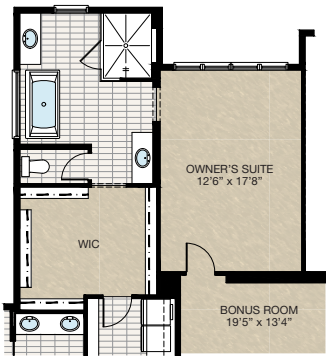
HARDWOOD	DECK	CARPET	CONCRETE	TILE	LAMINATE	LINO
----------	------	--------	----------	------	----------	------

# Featured Options

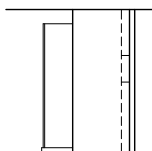
THE  
BIRMINGHAM  
3030 SQ.FT.

## SELECT-1 ENSUITE OPTION

- Add 2' cantilever adding 26 sq.ft.
- Re-design owner's suite & walk-in closet



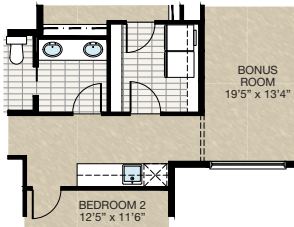
Front Elevation View



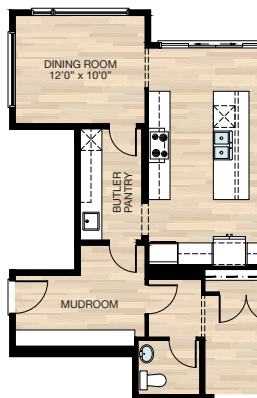
Side Elevation View

## SELECT-2 UPPER FLOOR WET BAR OPTION

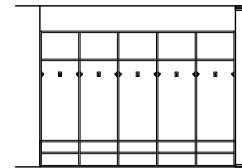
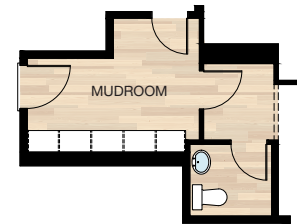
- Add upper & lower cabinets
- Add bar fridge & sink



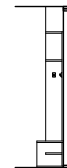
## SELECT-4 BUTLER PANTRY OPTION



## SELECT-3 MUDROOM MDF LOCKERS OPTION



Front Elevation View



Side Elevation View

Trico Homes is a local home builder, with new single and multi-family homes for sale in Calgary, DeWinton, Okotoks, Chestermere, Cochrane, and Airdrie. Offering a great selection of starter, move-up, semi-estate and estate models in numerous communities, you'll find the house that's just right for you! Look for this model and many others in Ambleton, Arbour Lake, Belmont, Carrington, Chelsea, CoachRidge, Cornerbrook, D'Arcy, Dawson's Landing, Hamilton Heights, Heritage Hills, Homestead, Legacy, Midtown, PineCreek, Precedence, Rivercrest, Seton, Sirocco, Verona West Townhomes, West83 Townhomes and Wolf Willow.

Renderings are artist's conceptions only and may vary by community and lot selection. Prices, floorplans, specifications and dimensions are approximate and are subject to change without notice. E.&O.E. © All rights reserved, including the right if reproduction in the whole or in part without the permission of Trico Homes. Revision: Sept 8, 2023.



Learn more at [tricohomes.com](http://tricohomes.com)

