



Double Garage

The diagram illustrates a 12-lane highway cross-section with the following details:

- Lane Configuration (from left to right):**
 - Lane 1: Red, 35.00 ft wide, marked with a circled '18'.
 - Lane 2: Red, 35.00 ft wide, marked with a circled '17'.
 - Lane 3: Blue, 35.00 ft wide, marked with a circled '16'.
 - Lane 4: Red, 35.00 ft wide, marked with a circled '15'.
 - Lane 5: Green (Bus Lane), 35.00 ft wide, marked with a circled '14'.
 - Lane 6: Red, 35.00 ft wide, marked with a circled '13'.
 - Lane 7: Blue, 35.00 ft wide, marked with a circled '12'.
 - Lane 8: Red, 35.00 ft wide, marked with a circled '11'.
 - Lane 9: Blue, 35.00 ft wide, marked with a circled '10'.
 - Lane 10: Red, 35.00 ft wide, marked with a circled '9'.
 - Lane 11: Blue, 35.00 ft wide, marked with a circled '8'.
 - Lane 12: Red, 35.00 ft wide, marked with a circled '7'.
- Dimensions:** Individual lane widths are consistently 35.00 feet. The total width of the 12 lanes is 420.00 feet.
- Signage:** A 'BELMONT PASSAGE' sign is located above the right side of the highway.
- Other Features:** A dashed line with circular markers runs along the top edge of the diagram.

THE OXFORD II

Sat - Sun: 12pm - 5pm

BELMONT



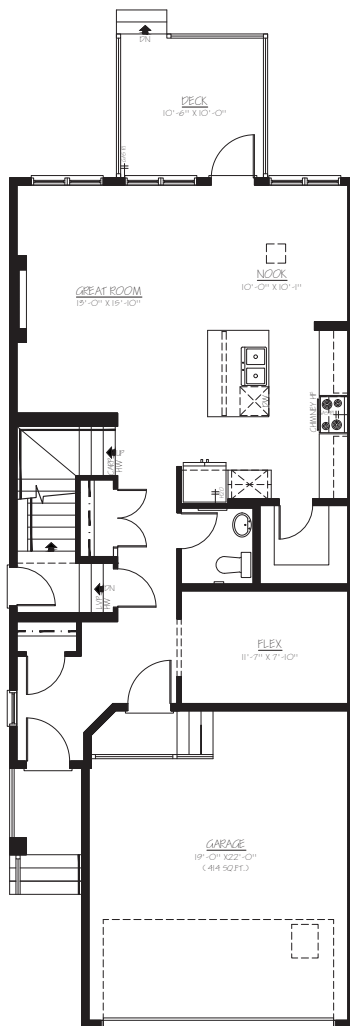
trichomes.com



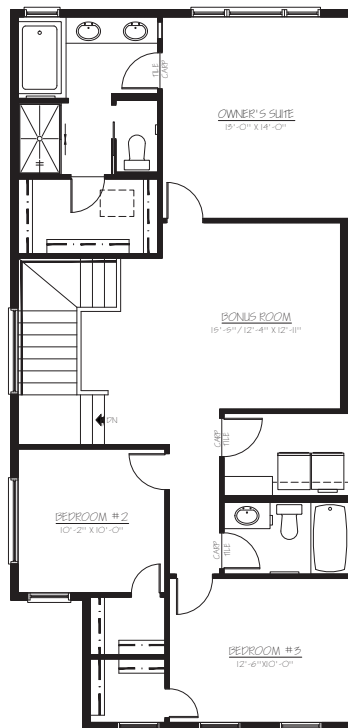
THE OXFORD II ZLL

2067 SQ.FT.

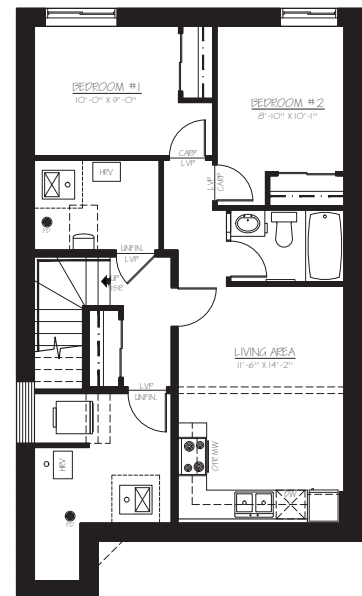
142 Belmont Passage SW



MAIN
912 SQ.FT.



UPPER
1155 SQ.FT.



SECONDARY SUITE
608 SQ.FT.



Platinum member
2004 - 2025



Renderings are artist's conceptions only and may vary by community and lot selection. Prices, floorplans, specifications and dimensions are approximate and are subject to change without notice. E.&O.E. © All rights reserved, including the right if reproduction in the whole or in part without the permission of Trico Homes.

Plan updated June 30, 2025



tricohomes.com