


← 25' →
Min. Lot Width

 3 Bedrooms

 2½ Bathrooms

THE SANDALWOOD ZLL

1664 SQ.FT.

Elements Specification

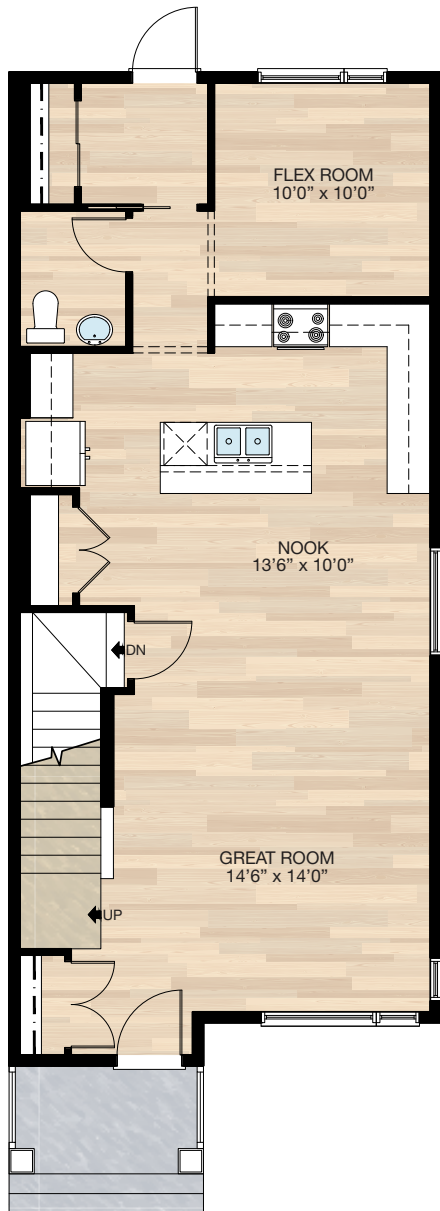
Elite Specification



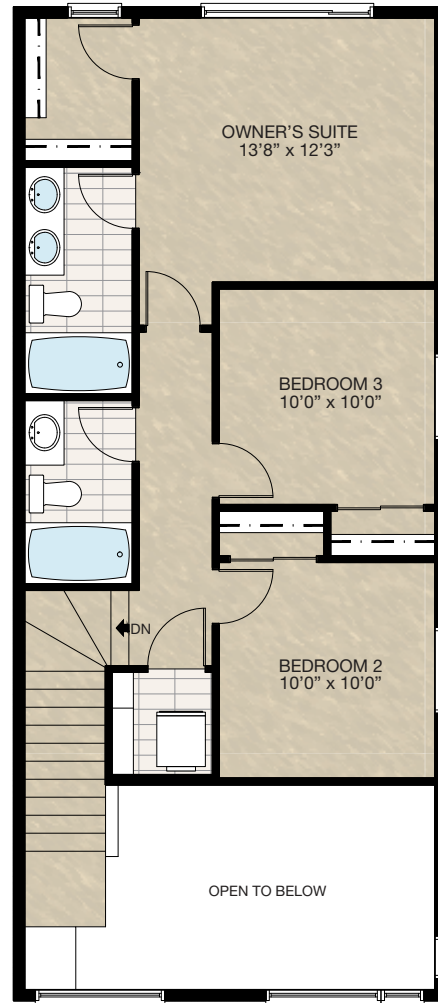
Trico Homes™
The Heart of Homebuilding®

STANDARD PLAN

THE
SANDALWOOD
ZLL
1664 SQ.FT.



MAIN
898 SQ.FT.



UPPER
766 SQ.FT.

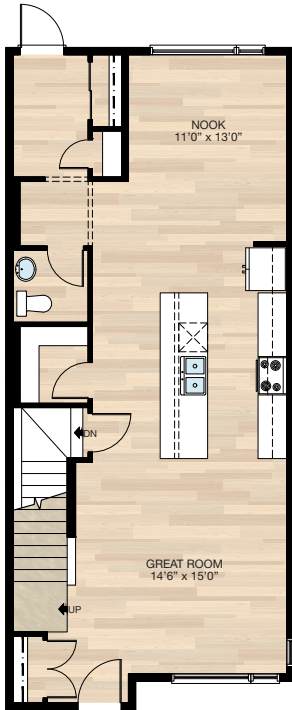


FEATURED OPTIONS



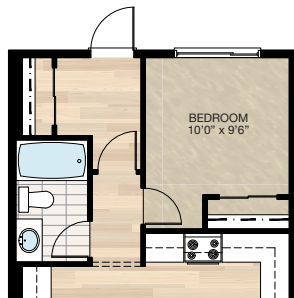
SELECT-1 ALTERNATE MAIN FLOOR OPTION

- Remove 48/24" x 72" window & add 72/24" x 72" window in flex room
- Remove 60" x 18" window in nook
- *CANNOT be combined with **SELECT-2 & 3**



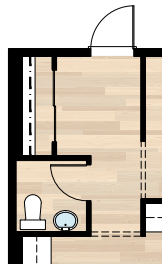
SELECT-2 MAIN FLOOR BEDROOM OPTION

- Extend main floor & foundation 2'0" adding 40 sq.ft.
- Close in flex room & add closet for bedroom
- Delete half bath & add full bath
- Remove pocket door & add 2'8" swing door
- Remove 48/24" x 72" window & add 72" x 60" window
- * CANNOT be combined with **SELECT-1, 3, 4 & 5**



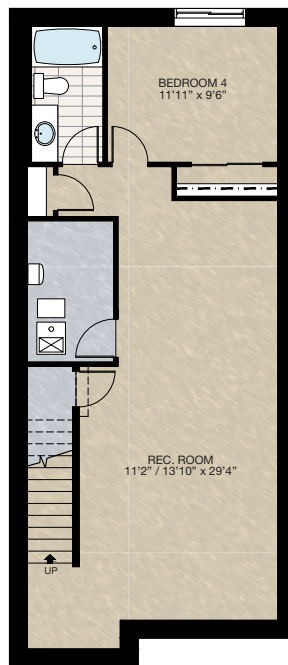
SELECT-3 OPEN MUDROOM OPTION

- Delete pocket door to mudroom
- Half bath is reduced
- Rear closet becomes larger & 4'0" door is increased to 5'0" door
- Two 3-way switches are removed
- * CANNOT be combined with **SELECT-1 & 2**



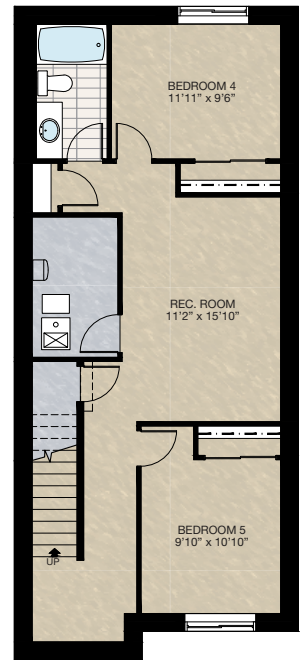
SELECT-4 BASEMENT DEVELOPMENT OPTION

- 694 Sq.Ft. basement development
- Included finished basement stairwell
- Delete 2'8" passage door top of stairwell
- Add 2 risers to stairwell for 9'0" basement ceiling (8'9" headroom clearance)
- 60" x 24" Window changed to 60" x 36"



SELECT-5 BASEMENT DEVELOPMENT (2 BEDROOM) OPTION

- 694 Sq.Ft. basement development
- Included finished basement stairwell
- Delete 2'8" passage door top of stairwell
- Add 2 risers to stairwell for 9'0" basement ceiling (8'9" headroom clearance)
- 60" x 24" Window changed to 60" x 36"
- Add 60" x 30" window

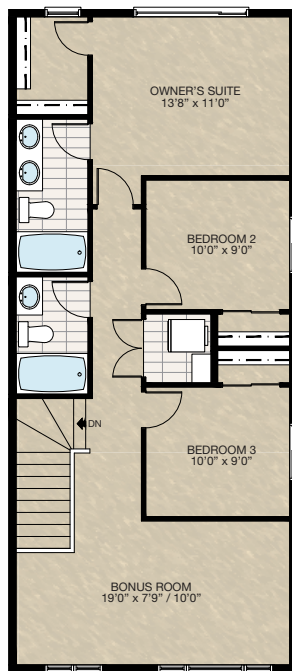


FEATURED SANDALWOOD ZLL OPTIONS



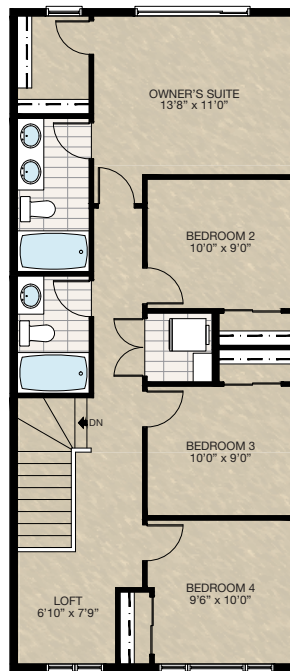
SELECT-9 ALTERNATE UPPER FLOOR: BONUS ROOM OPTION

- Add 154 Sq.Ft. (use open-to-below area)
- For A1 modern elevation - change front upper floor windows to 60" ht. max and frame top of windows at 6'8" from upper floor level
- Change picture window to opening window in bonus room
- Delete picture window from right elevation front



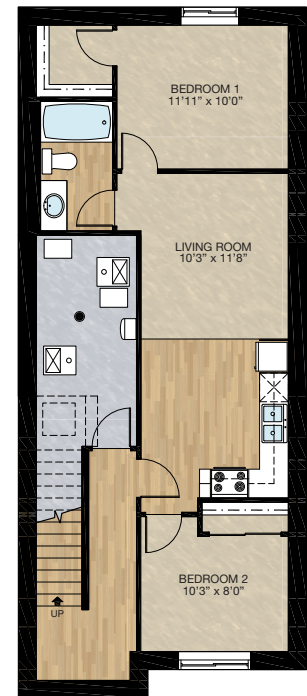
SELECT-10 ALTERNATE UPPER FLOOR: EXTRA BEDROOM + LOFT OPTION

- Add 154 Sq.Ft. (use open-to-below area)
- For A1 modern elevation - change front upper floor windows to 60" ht. max and frame top of windows at 6'8" from upper floor level
- Change picture window to egress window in bedroom 4
- Change picture window to opening window in loft
- Delete picture window from right elevation front



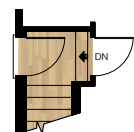
TWO BEDROOM SECONDARY SUITE OPTION

- 697 Sq.Ft. basement development
- Delete 60" x 18" P window @ nook due to zero lot line side
- Delete side window @ great room due to zero lot line side (window size is elevation dependent)
- Included finished basement stairwell
- Add 2 risers to stairwell for 9'0" basement ceiling (8'9" headroom clearance)
- Add 2'8" side entrance exterior door & exterior light w/switch @ stairwell
- Upgrade basement window from 60" x 24" DHSL to 60" x 36" DHSL
- Add 48" x 36" DHSL window
- * MUST combine with SELECT-8 alt. upper floor option due to zero lot side ensuite & loft windows to be removed from SELECT-8



NO PENETRATIONS WHATSOEVER TO ZERO LOT LINE SIDE

SECONDARY SUITE SIDE ENTRANCE

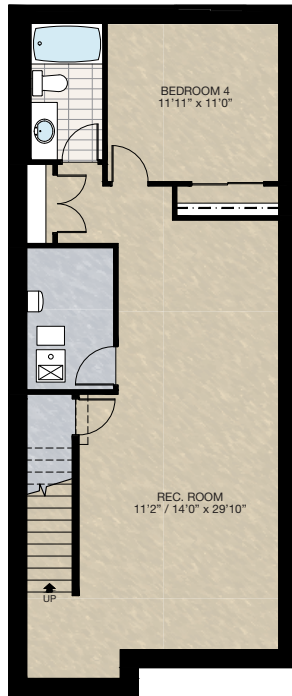


FEATURED OPTIONS

THE
SANDALWOOD
ZLL
1664 SQ.FT.

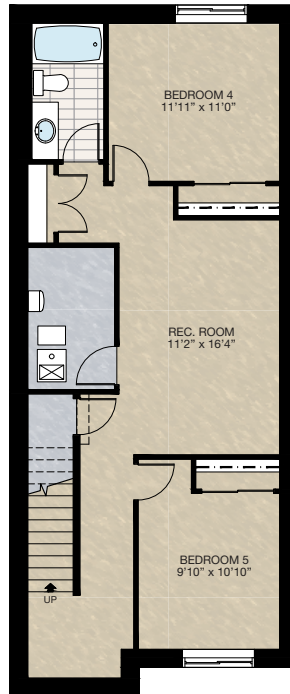
SELECT-6 BASEMENT DEVELOPMENT OPTION

- 731 Sq.Ft. basement development
 - Included finished basement stairwell
 - Delete 2'8" passage door top of stairwell
 - Add 2 risers to stairwell for 9'0" basement ceiling (8'9" headroom clearance)
 - 60" x 24" Window changed to 60" x 36"
- *Can ONLY be combined with **SELECT-2**



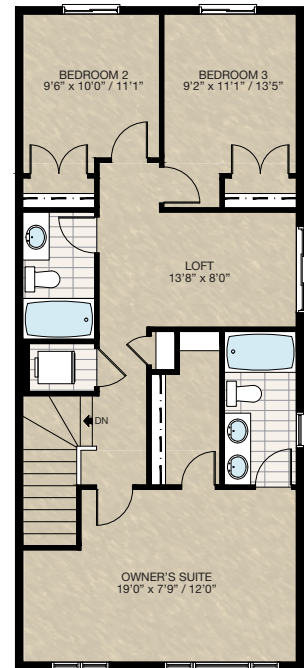
SELECT-7 BASEMENT DEVELOPMENT (2 BEDROOM) OPTION

- 731 Sq.Ft. basement development
 - Included finished basement stairwell
 - Delete 2'8" passage door top of stairwell
 - Add 2 risers to stairwell for 9'0" basement ceiling (8'9" headroom clearance)
 - 60" x 24" Window changed to 60" x 36"
 - Add 60" x 30" window
- *Can ONLY be combined with **SELECT-2**



SELECT-8 ALTERNATE UPPER FLOOR: LOFT + FRONT OWNER'S SUITE OPTION

- Add 154 sq.ft. (use open-to-below area)
- For A1 modern elevation - change front upper floor windows to 60" ht. max and frame top of windows at 6'8" from upper floor level
- Change picture window to egress window in owner's suite
- Delete picture window from right elevation front
- Delete 96" x 60" HSL window from rear elevation
- Delete 30" x 30" P window from rear elevation
- Relocate (2) 48" x 48" HSL from right elevation to rear
- Add 30" x 48" VSL window to ensuite
- Add 72" x 24" HSL one-side window to loft



Trico Homes is a local home builder, with new single and multi-family homes for sale in Calgary, Okotoks, Chestermere, Cochrane, Airdrie and DeWinton. Offering a great selection of starter, move-up, semi-estate and ultra-estate models in numerous communities, you'll find the house that's just right for you! Look for this model and many others in Ambleton, Belmont, Brawn Landing, Carrington, Chelsea, Chelsea Court Townhomes, Colours of Seton Townhomes, Cornerbrook, D'Arcy, Creek View, Dawson's Landing, Glacier Ridge, Hamilton Heights, Harmony, Homestead, Huxley, Legacy, Midtown, Pine Creek, Precedence, Rivercrest, Seton, Sirocco, Southbow Landing, Verona West Townhomes, West Springs, West83 Townhomes and Wolf Willow.



Renderings are artist's conceptions only and may vary by community and lot selection. Prices, floorplans, specifications and dimensions are approximate and are subject to change without notice. E.&O.E. © All rights reserved, including the right if reproduction in the whole or in part without the permission of Trico Homes.

Plan updated as of March 20, 2024.



tricohomes.com