



**AUGUST POSSESSION**



# THE RAEYA ZLL 1802 SQ.FT.

**8 Mitchell Way NW**



3 Bedrooms



3 Bathrooms

## OPTIONS INCLUDED IN THIS HOME ARE:

- Corner homesite near a future school
- Main floor flex room & full bath with standing shower
- Walkout basement with 2-bedroom secondary suite
- Hardwood throughout main floor
- 9' Knock-down ceilings on main floor
- 42" Upper cabinetry & crown moulding in kitchen
- 3 Bedrooms with a central bonus room on upper floor
- 4-Piece owner's ensuite
- Rear deck
- 9' Foundation

**PLUS RECEIVE YOUR OWN  
TRICO RED CARD**



**& ENJOY INCREDIBLE  
ONGOING SAVINGS &  
REWARDS FROM OUR  
PARTNERS & RETAILERS**

## COME VISIT OUR SHOWHOMES

**170 & 174 Mitchell Road NW, Calgary, AB**

Call Justin Rampersad today at 403.972.0702 or  
email at [glacerridgelaned@tricohomes.com](mailto:glacerridgelaned@tricohomes.com)

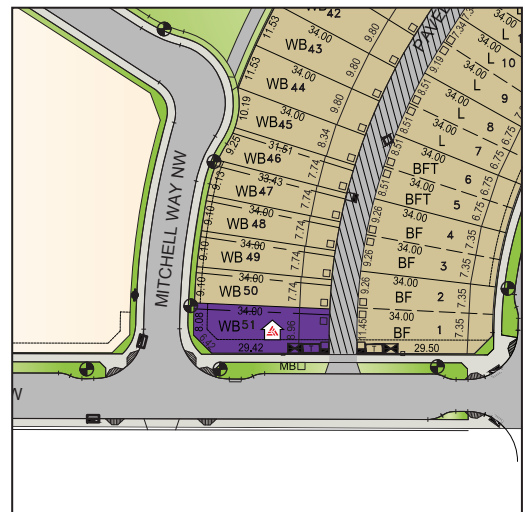


## SHOWHOME HOURS:

**Mon - Thurs: 2pm - 8pm**

**Fri: Closed**

**Sat - Sun: 12pm - 5pm**



**GLACIER RIDGE**



[tricohomes.com](http://tricohomes.com)

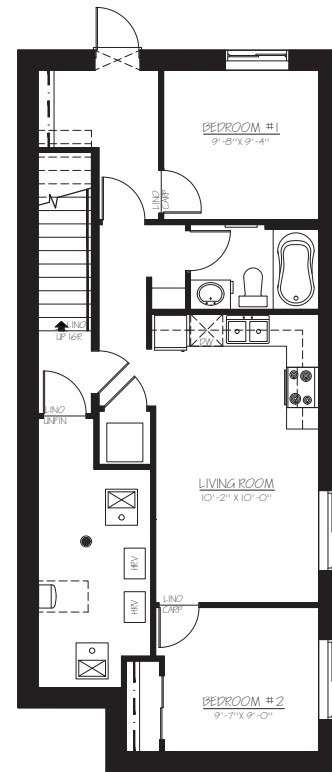
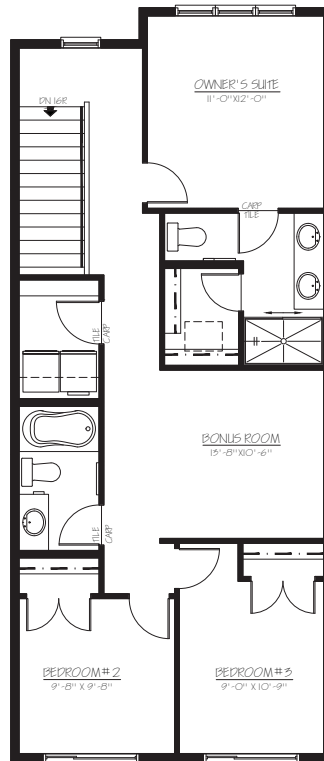
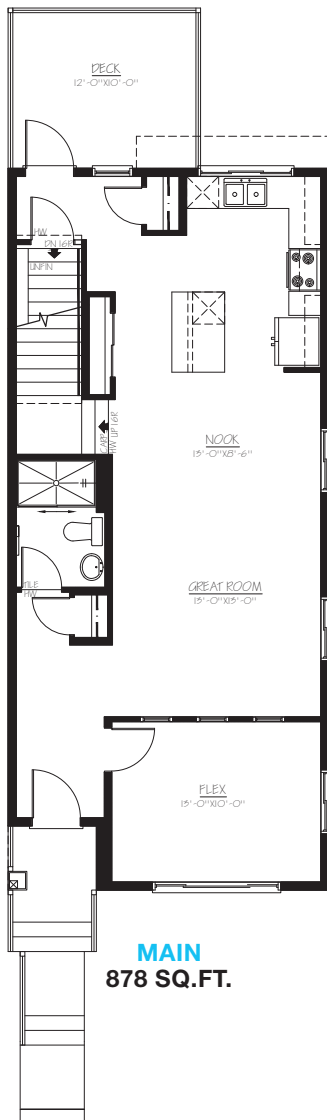




# THE RAEYA ZLL

1802 SQ.FT.

8 Mitchell Way NW



Renderings are artist's conceptions only and may vary by community and lot selection. Prices, floorplans, specifications and dimensions are approximate and are subject to change without notice. E.&O.E. © All rights reserved, including the right if reproduction in the whole or in part without the permission of Trico Homes.

Plan updated June 4, 2024



tricohomes.com