



**IMMEDIATE POSSESSION**



# THE REGENT 1344 SQ.FT.

**124 - 285 Chelsea Court**



2 Bedrooms



2½ Bathrooms



Garage

## OPTIONS INCLUDED IN THIS HOME ARE:

- Minutes away from local amenities, including eco-park, green spaces, schools, plaza & East Hills Shopping Centre
- Hardie Board siding exterior
- Entry level flex room with bathroom
- 9' Knock-down ceilings on entry & main level
- Open concept main floor
- Stainless steel appliances in kitchen
- Zebra blinds
- Dual bedrooms with separate ensuites & walk-in closets
- 4-Piece owner's ensuite

**PLUS RECEIVE YOUR OWN  
TRICO RED CARD**

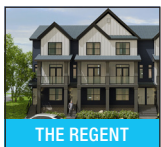


**& ENJOY INCREDIBLE  
ONGOING SAVINGS &  
REWARDS FROM OUR  
PARTNERS & RETAILERS**

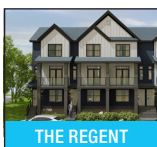
## COME VISIT OUR SHOWHOME

**84 & 116 - 285 Chelsea Court, Chestermere, AB**

Call May Vallo today at 825.540.0437 or email at  
chelseacourt@tricohomes.com



THE REGENT



THE REGENT

## SHOWHOME HOURS:

**Mon - Thurs: 2pm - 8pm**

**Fri: Closed**

**Sat - Sun: 12pm - 5pm**



**Chelsea  
Court**  
TOWNHOMES

**Trico  
Homes™**  
The Heart of Homebuilding®

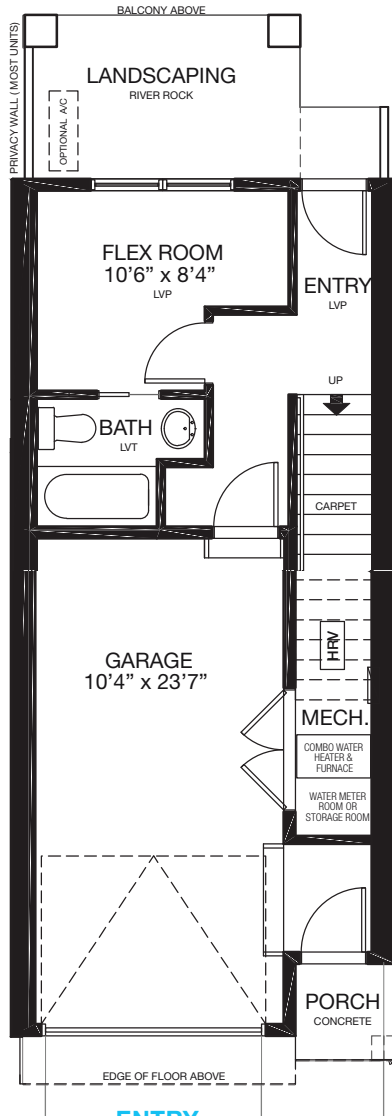


**tricohomes.com**

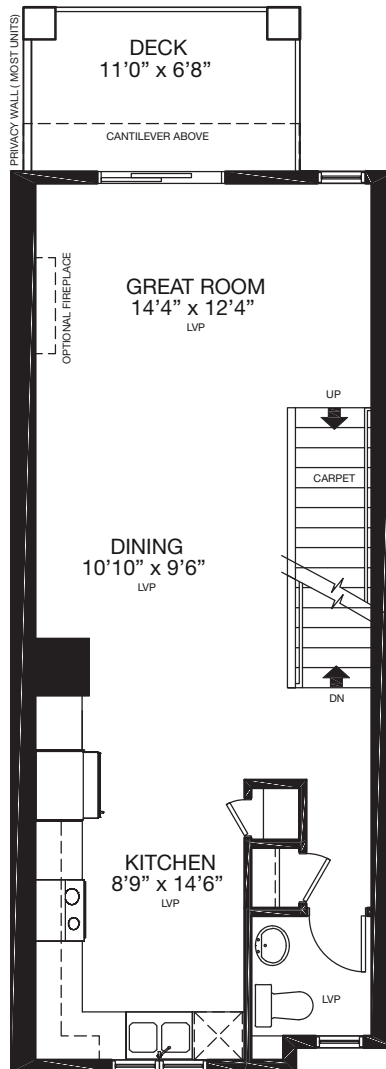


# THE REGENT 1344 SQ.FT.

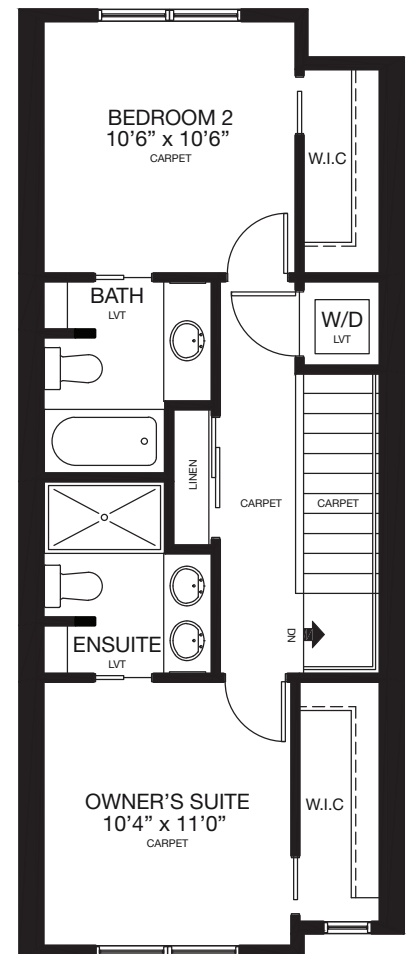
124 - 285 Chelsea Court



**ENTRY**  
203 SQ.FT.



**MAIN**  
559 SQ.FT.



**UPPER**  
582 SQ.FT.



Renderings are artist's conceptions only and may vary by community and lot selection. Prices, floorplans, specifications and dimensions are approximate and are subject to change without notice. E.&O.E. © All rights reserved, including the right if reproduction in the whole or in part without the permission of Trico Homes.

Plan updated October 2, 2025



tricohomes.com