






← 29' →
Min. Lot Width

 3 Bedrooms

 2½ Bathrooms

 Double Garage

THE
OXFORD II ZLL
2067 SQ.FT.

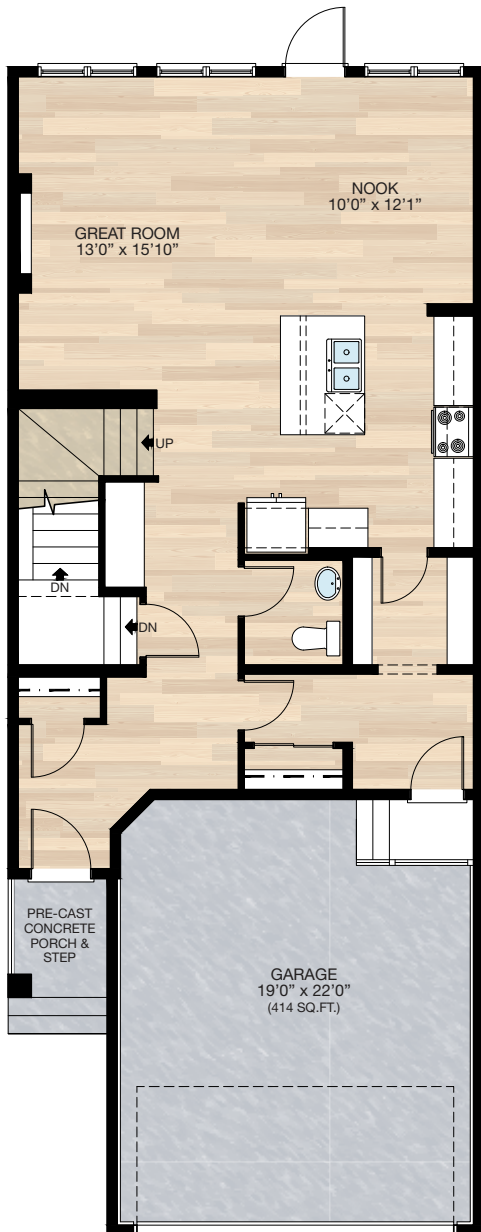
Elite Specification



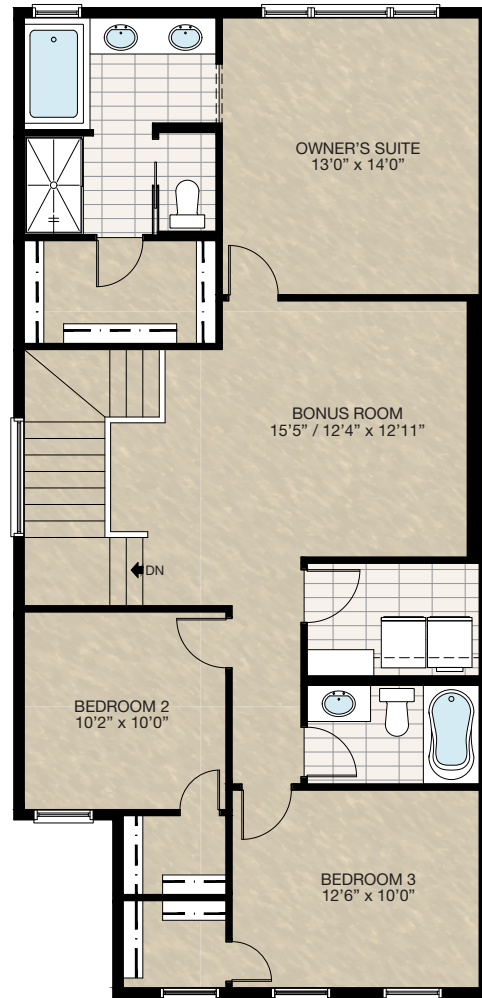
Trico Homes™
The Heart of Homebuilding®

STANDARD PLAN

THE OXFORD II
ZLL
2067 SQ.FT.



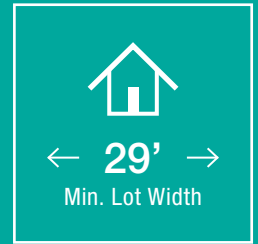
MAIN
912 SQ.FT.



UPPER
1155 SQ.FT.

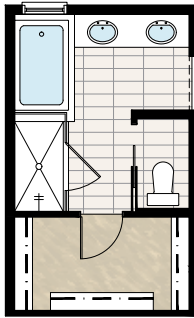
HARDWOOD	DECK	CARPET	CONCRETE	TILE	LAMINATE	LINO
----------	------	--------	----------	------	----------	------

FEATURED OPTIONS



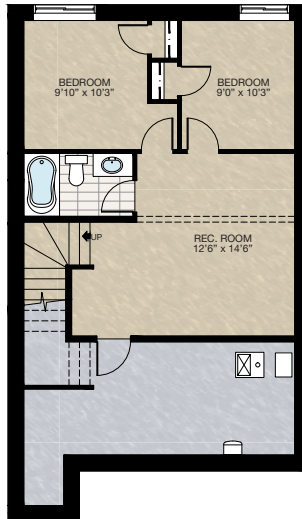
SELECT-1 ENSUITE OPTION

- Delete standard 36" x 60" acrylic shower
- Add 36" x 60" tiled shower with 10mm glass
- Extend tub tiled ledge by 3.5" next to shower
- Relocate towel bar



SELECT-2 BASEMENT DEVELOPMENT OPTION

- 547 Sq.Ft. basement development
- Included finished basement stairwell
- Add 1 risers to stairwell for 9'0" basement ceiling (8'9" headroom clearance)
- Upgraded 60" x 24" DHSL to 60" x 36" DHSL
- Add 48" x 36" DHSL window
- Relocate 2'8" passage door from top of stairwell to mechanical room



TWO BEDROOMS SECONDARY SUITE OPTION

- 608 Sq.Ft. basement development
- Included finished basement stairwell
- Add 1 risers to stairwell for 9'0" basement ceiling (8'9" headroom clearance)
- Include washer & dryer rough-in only
- Second Furnace & HRV added to accommodate secondary suite
- Add 48" x 36" DHSL window to rear
- Upgrade existing window 60" x 24" DBSL to 60" x 36" DBSL

