
 ← 36' →
 Min. Lot Width

-  3 Bedrooms
-  2½ Bathrooms
-  Double Garage

THE WESTWOOD

2025 SQ.FT.

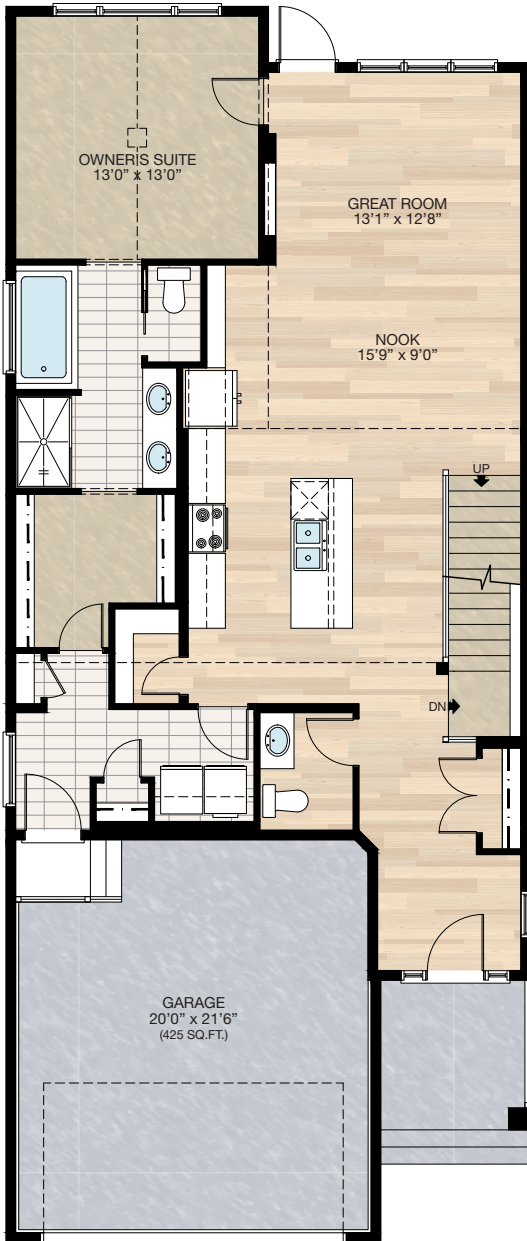
Elements Specification
 Elite Specification



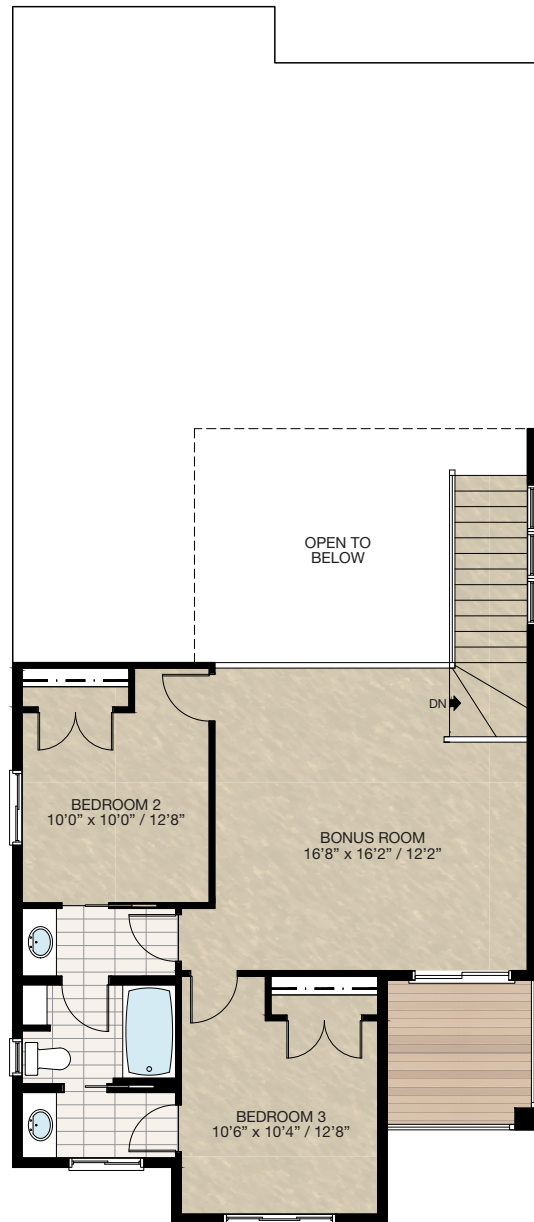
Trico Homes™
The Heart of Homebuilding®

STANDARD PLAN

THE
WESTWOOD
2025 SQ.FT.



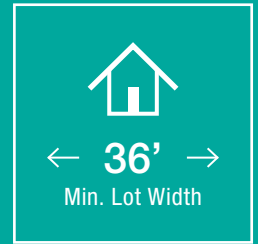
MAIN
1269 SQ.FT.



UPPER
756 SQ.FT.



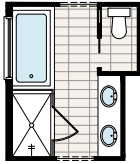
FEATURED OPTIONS



SELECT-1 ENSUITE OPTION

*CANNOT be combined with **SELECT-3** or **4** option

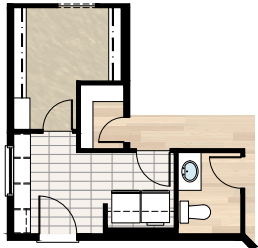
- Delete standard 36" x 60" acrylic shower base w/ tiled walls & 6mm glass
- Add 40" x 60" tiled shower with 10mm glass
- Extend tub tiled ledge by 3.5" next to shower
- Relocate towel bar to opposite side of tub



SELECT-2 MUDROOM LOCKERS OPTION

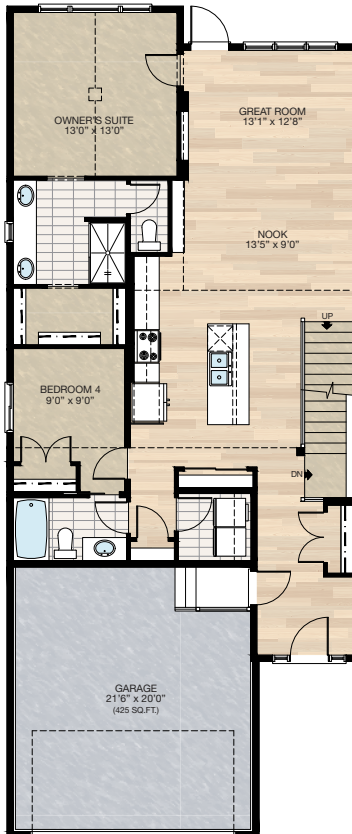
*CANNOT be combined with **SELECT-3** or **4** option

- Delete coat closet & linen closet at mudroom
- Add 8'0" MDF lockers & coat hooks with MDF backing
- Replace 30" of closet shelving in master walk-in closet with four 30" wide & 16" deep wire shelving for linen
- Delete one light outlet in mudroom
- Recenter mudroom window between shelves & wall
- Garage entrance door moved 1'4" towards W/D



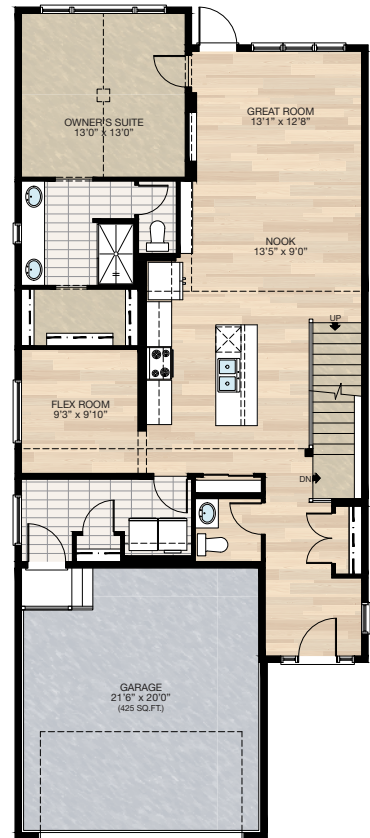
SELECT-3 MAIN FLOOR TWO BEDROOMS OPTION

- Delete 72" x 36" soaker tub at ensuite
- Delete 60" x 48" P frosted window at ensuite
- Add 20" x 48" P frosted window at ensuite between two sinks
- Vanity mirror to be two 24" x 42" centered over each sink
- Additional 22" of vanity at ensuite
- Change water closet door from pocket to swing door
- Reduced owner's walk-in closet
- Add second bedroom with closet
- Add 3-piece main bath including a 2'6" pocket door access from bedroom 2
- Upgrade single switch to 3-way switch in main bath
- Add 48" x 40" HSL to bedroom 2
- Delete half bath
- Delete 8" cabinetry at kitchen
- Delete walk-in pantry
- Add pantry closet
- Upgrade kitchen 3-way switch to 4-way switch
- Delete mudroom & 48" x 18" P window & relocate garage entrance
- Change garage entrance door from 3'0" to 2'8"



SELECT-4 FLEX ROOM OPTION

- Delete 72" x 36" soaker tub at ensuite
- Delete 60" x 48" P frosted window at ensuite
- Add 20" x 48" P frosted window at ensuite between two sinks
- Vanity mirror to be two 24" x 42" centered over each sink
- Additional 22" of vanity at ensuite
- Water closet door changed from pocket door to swing door
- Reduced owner's walk-in closet
- Add 60" x 18" P window to flex room
- Delete 11" cabinetry at kitchen
- Delete walk-in pantry
- Add pantry closet
- Upgrade kitchen 3-way switch to 4-way switch
- Delete linen closet in mudroom
- Increase width to coat closet in mudroom



FEATURED OPTIONS

THE
WESTWOOD
2025 SQ.FT.

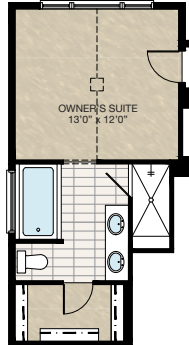
SELECT-4A MUDROOM LOCKER OPTION

- *MUST combine with **SELECT-4 Flex Room** option
- Reduce width of coat closet in mudroom
- Delete 48" x 18" P window in mudroom
- Add 36" x 18" P window in mudroom
- Add 6'6" MDF locker & coat hooks with MDF backing
- Extend wood landing at garage entry by 12"
- Change garage entrance door from 3'0" to 2'8"



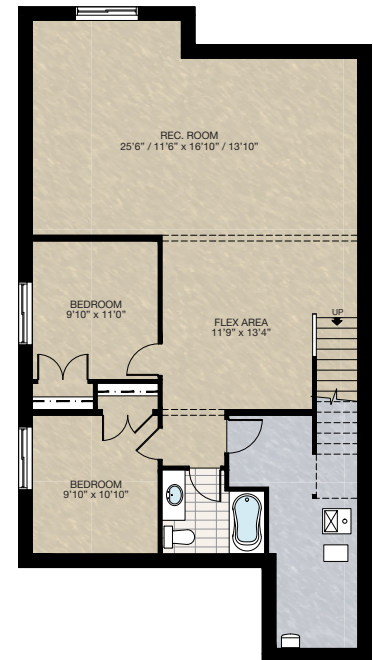
SELECT-5 ENSUITE OPTION 2

- *MUST combine with **SELECT-3 or 4** option
- Add 72" x 36" soaker tub with 4" tiled deck
- Delete 27.5" length of vanity
- Delete 20" x 48" P frosted window
- Add 60" x 36" P frosted window
- Reduced owner's suite length by 12"
- Delete 36" x 60" acrylic shower base w/tiled walls & 6mm glass
- Add 36" x 81" tiled shower with 10mm glass door & 12" tiled bench



SELECT-6 BASEMENT DEVELOPMENT OPTION 1

- 976 Sq.Ft. developed area
- Add 1 riser to finished stairwell for 9'0" basement ceiling (8'9" headroom clearance)
- All three basement windows upgraded from 24" high to 36" high
- 42" Stubwall added to stairs



Trico Homes is a local home builder, with new single and multi-family homes for sale in Calgary, Okotoks, Chestermere, Cochrane, Airdrie and DeWinton. Offering a great selection of starter, move-up, semi-estate and ultra-estate models in numerous communities, you'll find the house that's just right for you! Look for this model and many others in Ambleton, Arbour Lake, Belmont, Carrington, Chelsea, Cornerbrook, D'Arcy, Dawson's Landing, Glacier Ridge, Hamilton Heights, Homestead, Legacy, Midtown, Pine Creek, Precedence, Rivercrest, Seton, Sirocco, Verona West Townhomes, West83 Townhomes and Wolf Willow.



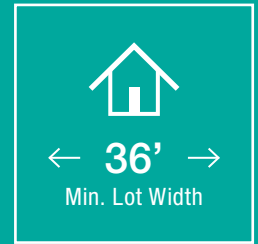
Renderings are artist's conceptions only and may vary by community and lot selection. Prices, floorplans, specifications and dimensions are approximate and are subject to change without notice. E.&O.E. © All rights reserved, including the right if reproduction in the whole or in part without the permission of Trico Homes.

Plan updated as of March 20, 2023.



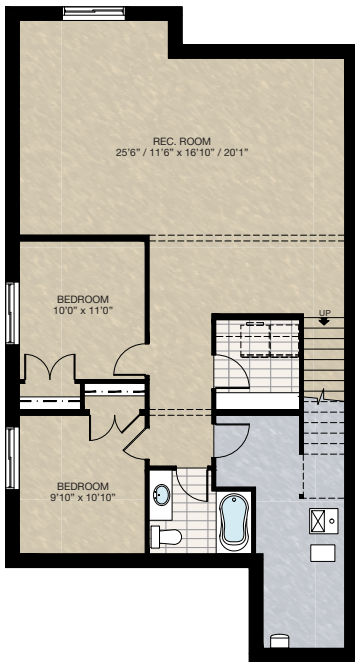
tricohomes.com

FEATURED WESTWOOD OPTIONS



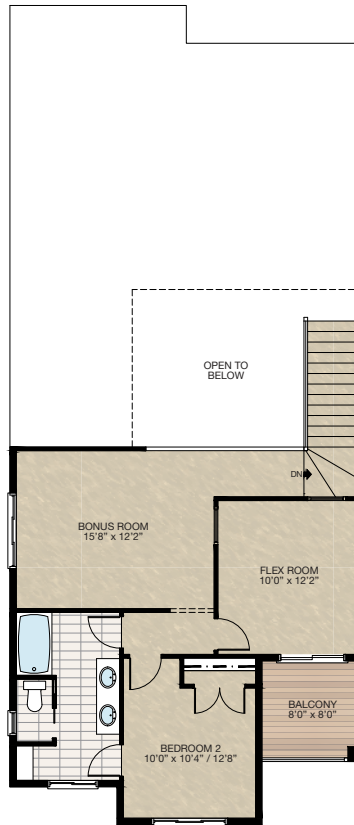
SELECT-7 BASEMENT DEVELOPMENT OPTION 2

- 976 Sq.Ft. developed area
- Add laundry room with washer & dryer rough-in
- Add 1 riser to finished stairwell for 9'0" basement ceiling (8'9" headroom clearance)
- All three basement windows upgraded from 24" high to 36" high



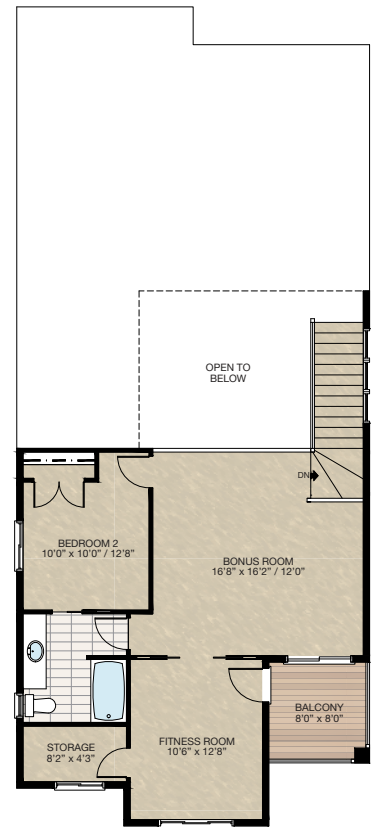
SELECT-8 UPPER FLOOR FLEX ROOM OPTION

- Add two 36" x 36" glass inserts to flex room
- Reduced 13.5" of vanity at bathroom
- Delete 48" x 40" HSL window
- Add 72" x 20" HSL window to bonus room



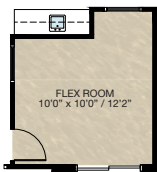
SELECT-10 UPPER FLOOR FITNESS ROOM OPTION

- Reduced 14" vanity at bathroom
- Add storage room
- Add two 2'4" French pocket doors to fitness room
- Add 2'8" French exterior door
- Add 4-way switch to exterior light at deck



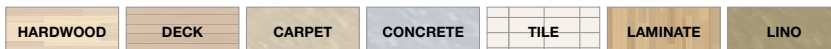
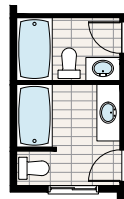
SELECT-8A WET BAR OPTION

- *Must combined with SELECT-8 option
- Reduced flex room
- Add 72" wet bar with upper cabinet & sink



SELECT-9 UPPER FLOOR TWO BATHROOMS OPTION

- Delete 24" x 36" VSL frosted window
- Delete four 16" wire shelves



FEATURED WESTWOOD OPTIONS

THE
WESTWOOD
2025 SQ.FT.

SELECT-11
UPPER FLOOR OPTION

- Reduced 14" vanity bathroom
- Add walk-in closet to bedroom 2

