

  
← 25' →  
Min. Lot Width

 3 Bedrooms

 2½ Bathrooms

THE  
**McKINNEY** ZLL  
1670 SQ.FT.

Elements Specification

Elite Specification

---

---

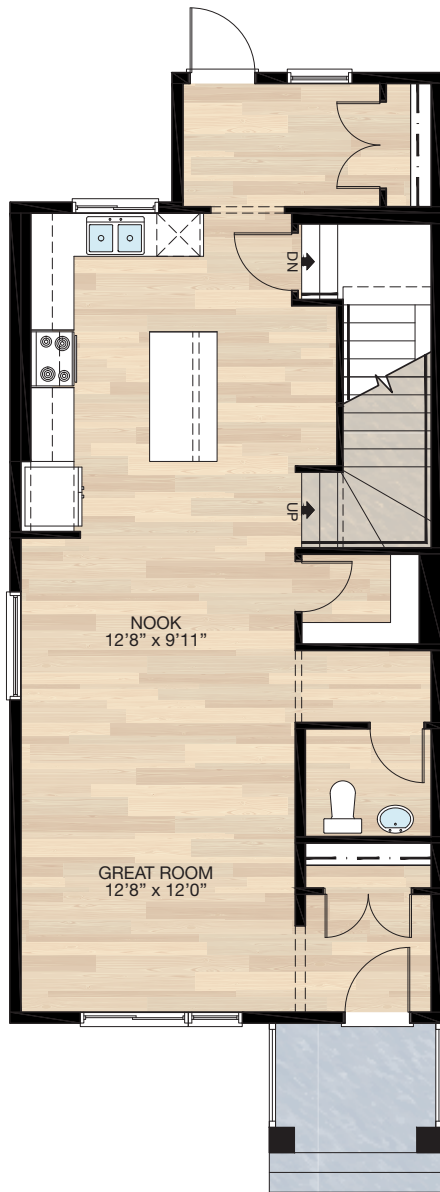
---



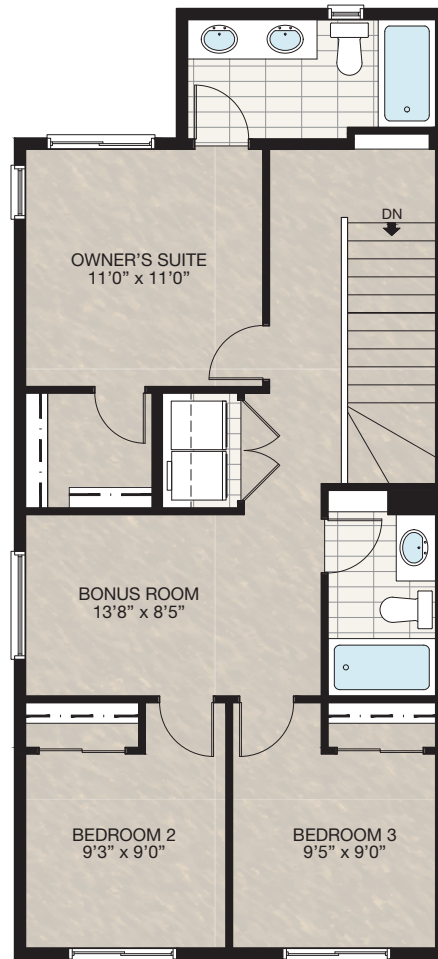
Trico Homes™  
The Heart of Homebuilding®

# STANDARD PLAN

THE  
**McKINNEY**  
ZLL  
1670 SQ.FT.



**MAIN**  
835 SQ.FT.



**UPPER**  
835 SQ.FT.

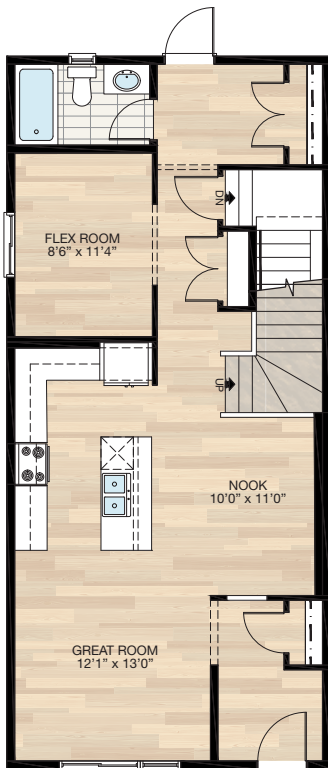


# FEATURED OPTIONS



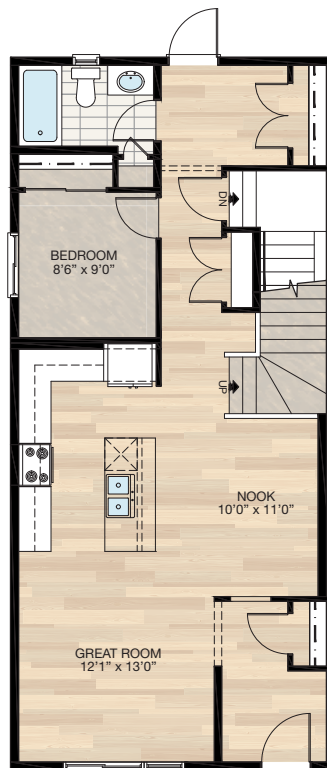
## SELECT-1 MAIN FLOOR FLEX ROOM WITH BATH OPTION

- Additional 45 Sq.Ft. to main floor
- Redesigned main floor to accommodate flex room and full bath
- Delete rear window 36" x 72"
- Delete 60" x 24" window on the side
- Relocate rear window 48" x 48" HSL to flex room
- Add 20" x 40" window to bathroom



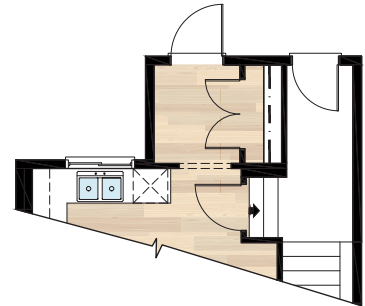
## SELECT-2 MAIN FLOOR BEDROOM WITH BATH OPTION

- Additional 45 Sq.Ft. to main floor
- Redesigned main floor to accommodate bedroom and full bath
- Delete rear window 36" x 72"
- Delete 60" x 24" window on the side
- Relocate rear window 48" x 48" HSL to bedroom
- Add 20" x 40" window to bathroom



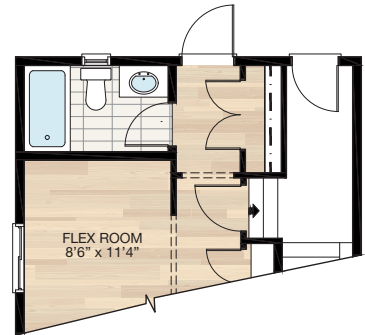
## SELECT-5 REAR ENTRANCE OPTION 1

- Delete rear window 36" x 72"
- \*Must be combined with standard main floor



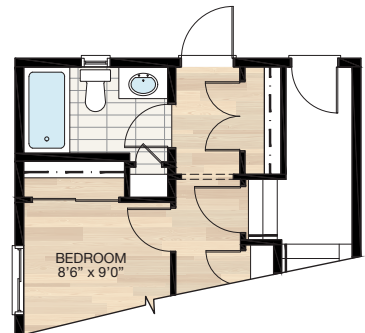
## SELECT-6 REAR ENTRANCE OPTION 2

- \*Must be combined with SELECT-1 (main floor flex room with bath option)



## SELECT-7 REAR ENTRANCE OPTION 3

- \*Must be combined with SELECT-2 (main floor bedroom with bath option)



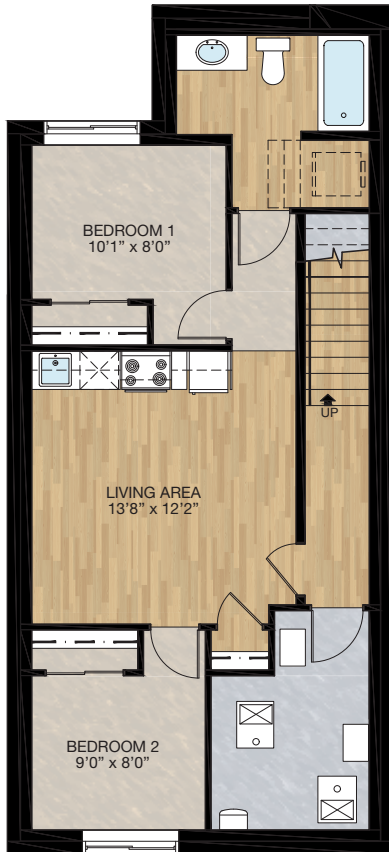
# FEATURED MCKINNEY ZLL OPTIONS



## □ SECONDARY SUITE OPTION 1

- 618 Sq.Ft. Basement development
- Included finished basement stairwell
- Added 1 riser to stairwell for 9'0" basement ceiling (8'9" headroom clearance)
- Added 60" x 36" HSL window to bedroom 2
- Upgraded side window from 60" x 24" DBSL to 60" x 36" DBSL
- Included washer & dryer rough-in only
- 2<sup>nd</sup> furnace & HRV added to accommodate secondary suite
- Included rear entrance to basement suite
- Door to top of stair upgraded to 2'8" solid core smoke sealed with lock

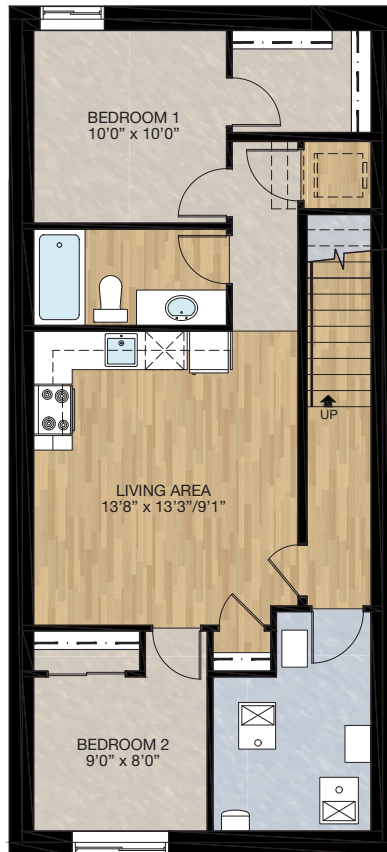
\*Must be combined with standard main floor & **SELECT-5** rear entrance



## □ SECONDARY SUITE OPTION 2

- 673 Sq.Ft. Basement development
- Included finished basement stairwell
- Added 1 riser to stairwell for 9'0" basement ceiling (8'9" headroom clearance)
- Added 40" x 40" HSL window to bedroom 1
- Upgraded front window from 60" x 24" DBSL to 60" x 36" DBSL
- Included washer & dryer rough-in only
- 2<sup>nd</sup> furnace & HRV added to accommodate secondary suite
- Included rear entrance to basement suite with switch and exterior light
- Door to top of stair upgraded to 2'8" solid core smoke sealed with lock

\*Must be combined with **SELECT-1** or **SELECT-2** main floor options and **SELECT-6** or **SELECT-7** rear entrance options



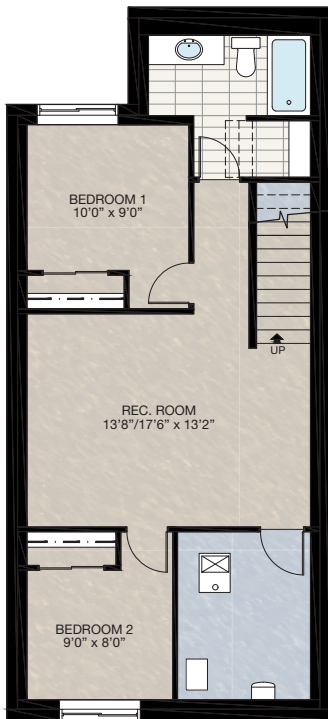
# FEATURED OPTIONS

THE  
**McKINNEY  
ZLL**  
1670 SQ.FT.

## SELECT-3 BASEMENT DEVELOPMENT OPTION

- 626 Sq.Ft. Basement development
- Included finished basement stairwell
- Add 1 riser to stairwell for 9'0" basement ceiling (8'9" headroom clearance)
- Add 60" x 36" HSL window to bedroom 2
- Upgrade side window from 60" x 24" DBSL to 60" x 36" DBSL

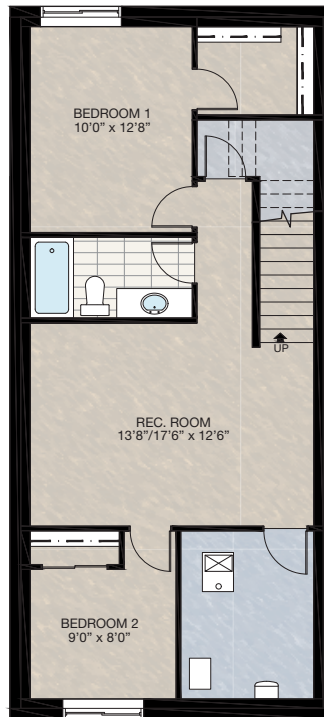
\*MUST be combined with standard main floor plan



## SELECT-4 BASEMENT DEVELOPMENT OPTION

- 642 Sq.Ft. Basement development
- Included finished basement stairwell
- Add 1 riser to stairwell for 9'0" basement ceiling (8'9" headroom clearance)
- Add 60" x 36" HSL window to bedroom 2
- Upgrade side window from 60" x 24" DBSL to 60" x 36" DBSL

\*MUST be combined with **SELECT-1** or **SELECT-2** main floor option



Trico Homes is a local home builder, with new single and multi-family homes for sale in Calgary, Okotoks, Chestermere, Cochrane, Airdrie and DeWinton. Offering a great selection of starter, move-up, semi-estate and ultra-estate models in numerous communities, you'll find the house that's just right for you! Look for this model and many others in Ambleton, Belmont, Brawn Landing, Carrington, Chelsea, Chelsea Court Townhomes, Colours of Seton Townhomes, Cornerbrook, D'Arcy, Creek View, Dawson's Landing, Glacier Ridge, Hamilton Heights, Harmony, Homestead, Huxley, Legacy, Midtown, Pine Creek, Precedence, Rivercrest, Seton, Sirocco, Southbow Landing, Verona West Townhomes, West Springs, West83 Townhomes and Wolf Willow.



Renderings are artist's conceptions only and may vary by community and lot selection. Prices, floorplans, specifications and dimensions are approximate and are subject to change without notice. E.&O.E. © All rights reserved, including the right if reproduction in the whole or in part without the permission of Trico Homes.

Plan updated as of **October 04, 2024**.



tricohomes.com