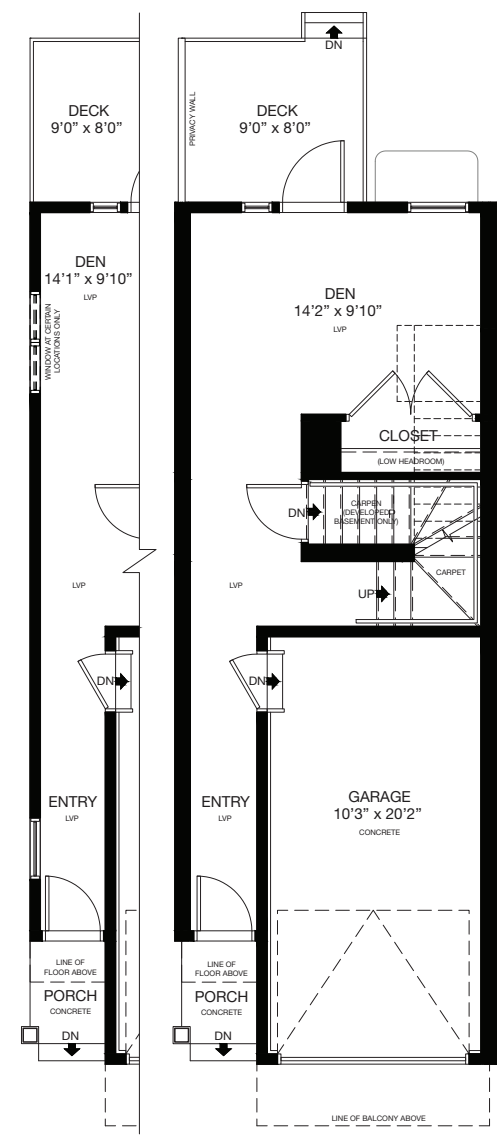


VERONA
WEST
TOWNHOMES

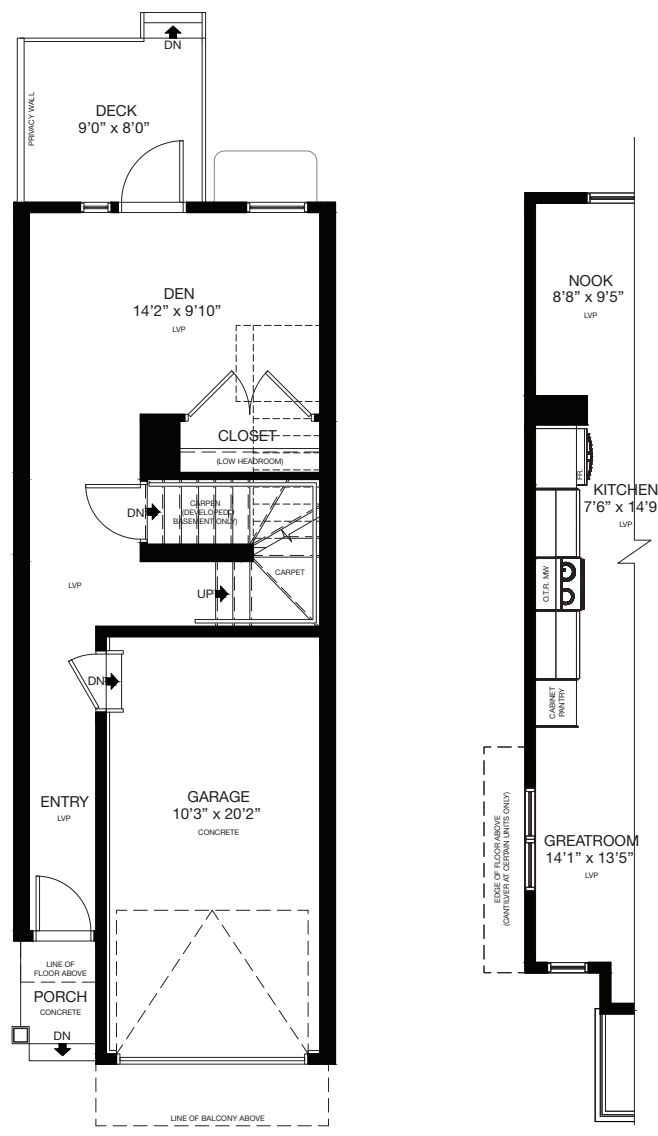
CYPRESS

1,503 SQ.FT

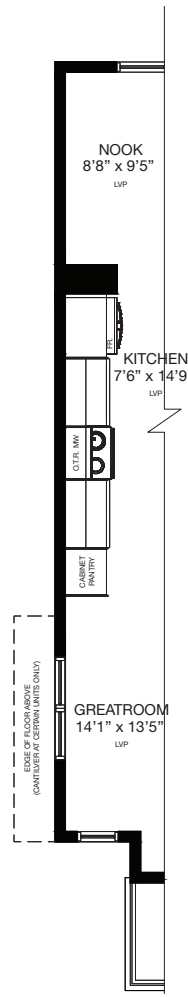
TYPE 2B



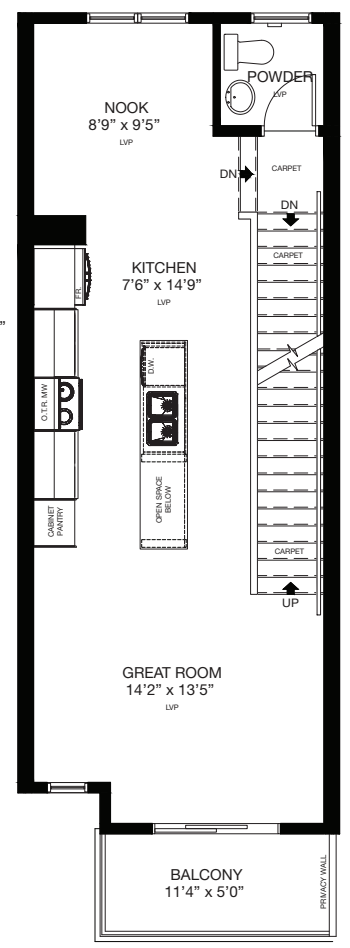
END UNIT
ENTRY LEVEL



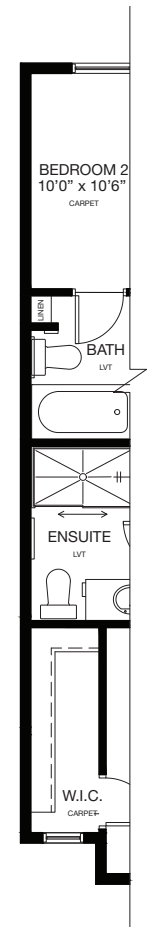
ENTRY LEVEL
Area: 325 Sq.Ft.



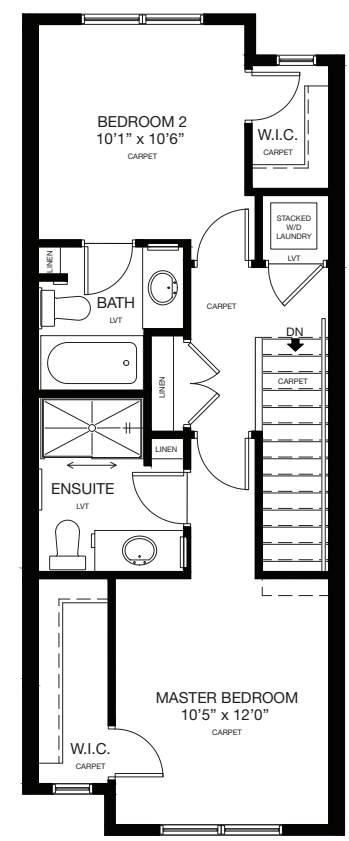
END UNIT
MAIN FLOOR



MAIN FLOOR
Area: 593 Sq.Ft.



UPPER
FLOOR
END UNIT



UPPER FLOOR
Area: 585 Sq.Ft.

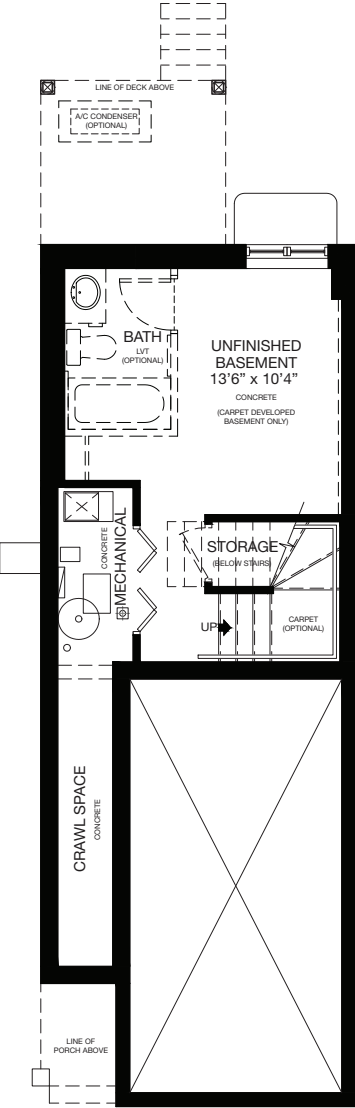
* Floorplan is an artist rendering only and may be subject to change without notice. Builder reserves the right to make modifications and changes to building design, specifications, features and floorplans without notice. Measurements and areas shown are based on pre-construction estimates and are approximate only. E.&O.E. Windows locations and sizes on these renderings are dependant on building location and elevation as approved by the City of Calgary, confirm with your sales representative exact locations. VERW-26176 Generic Floorplan Insert Sheets v6, February 2, 2022.

VERONA
WEST
TOWNHOMES

AVAILABLE
CYPRESS
BASEMENT
OPTIONS

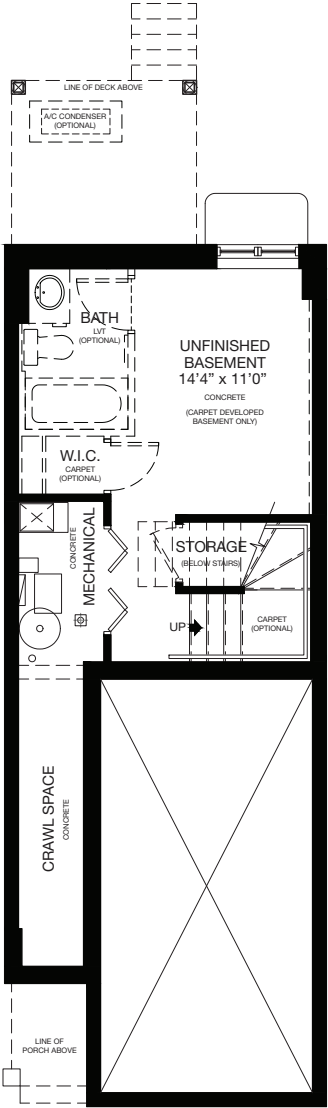
1,503 SQ.FT

TYPE 2B



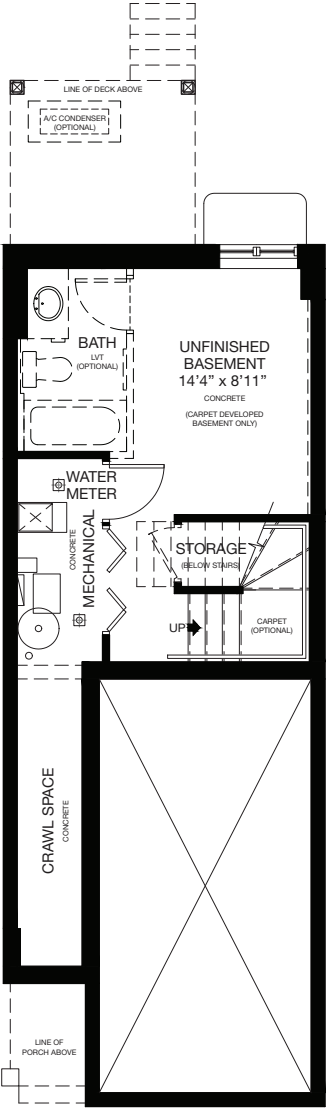
END UNIT BASEMENT

Optional Developed Area:
223 Sq.Ft.



BASEMENT

Optional Developed Area:
226 Sq.Ft.



BASEMENT WITH WATER METER

Optional Developed Area:
216 Sq.Ft.

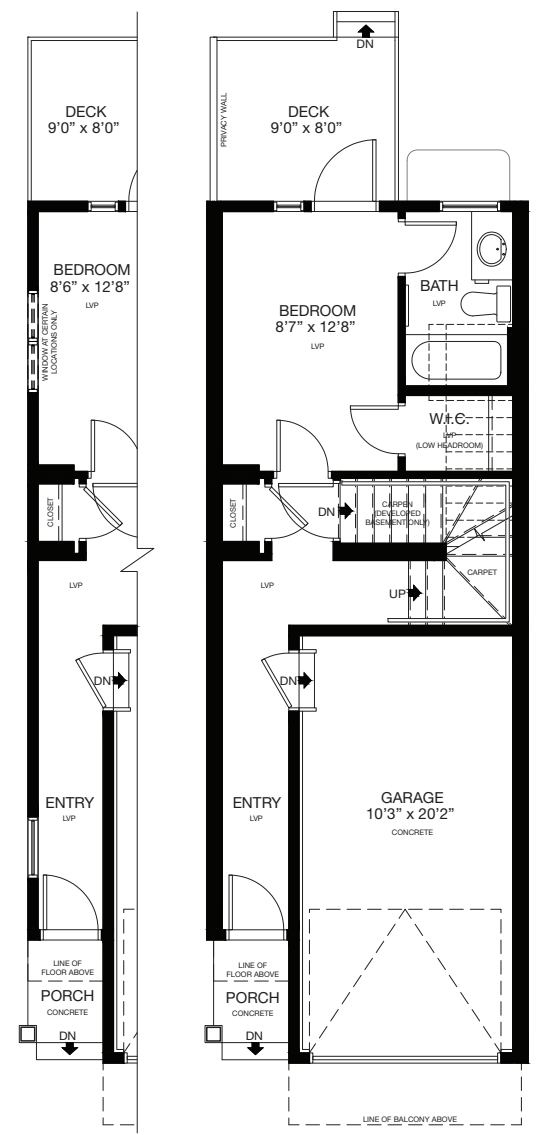
* Floorplan is an artist rendering only and may be subject to change without notice. Builder reserves the right to make modifications and changes to building design, specifications, features and floorplans without notice. Measurements and areas shown are based on pre-construction estimates and are approximate only. E.&O.E. Windows locations and sizes on these renderings are dependant on building location and elevation as approved by the City of Calgary, confirm with your sales representative exact locations. VERW-26176 Generic Floorplan Insert Sheets v6, February 2, 2022.

VERONA
WEST
TOWNHOMES

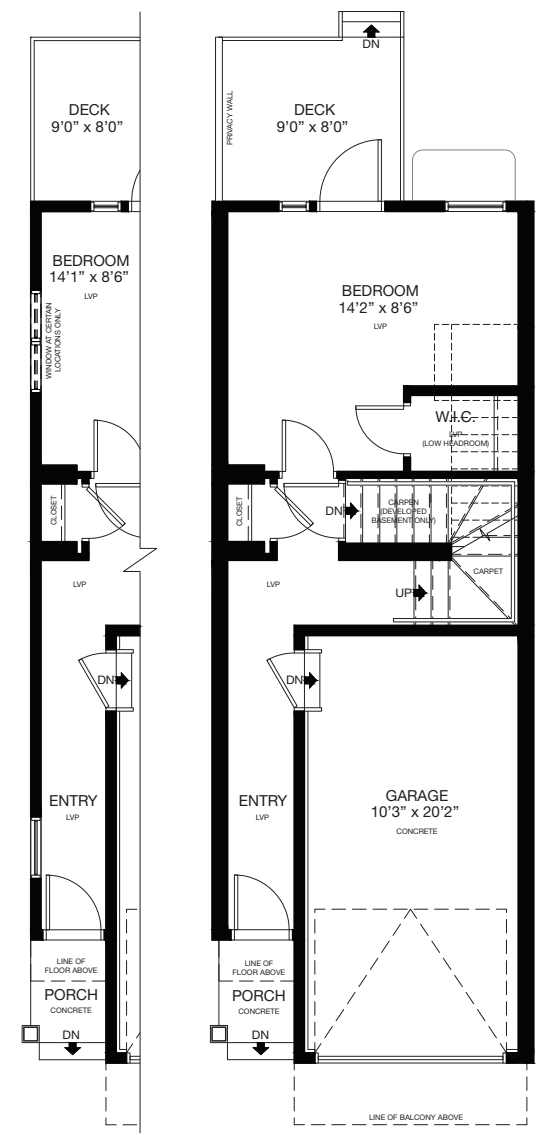
AVAILABLE
CYPRESS
ENTRY LEVEL
OPTIONS

1,503 SQ.FT

TYPE 2B



END UNIT
ENTRY LEVEL
OPTION 1
Area: 325 Sq.Ft.



END UNIT
ENTRY LEVEL
OPTION 2
Area: 325 Sq.Ft.

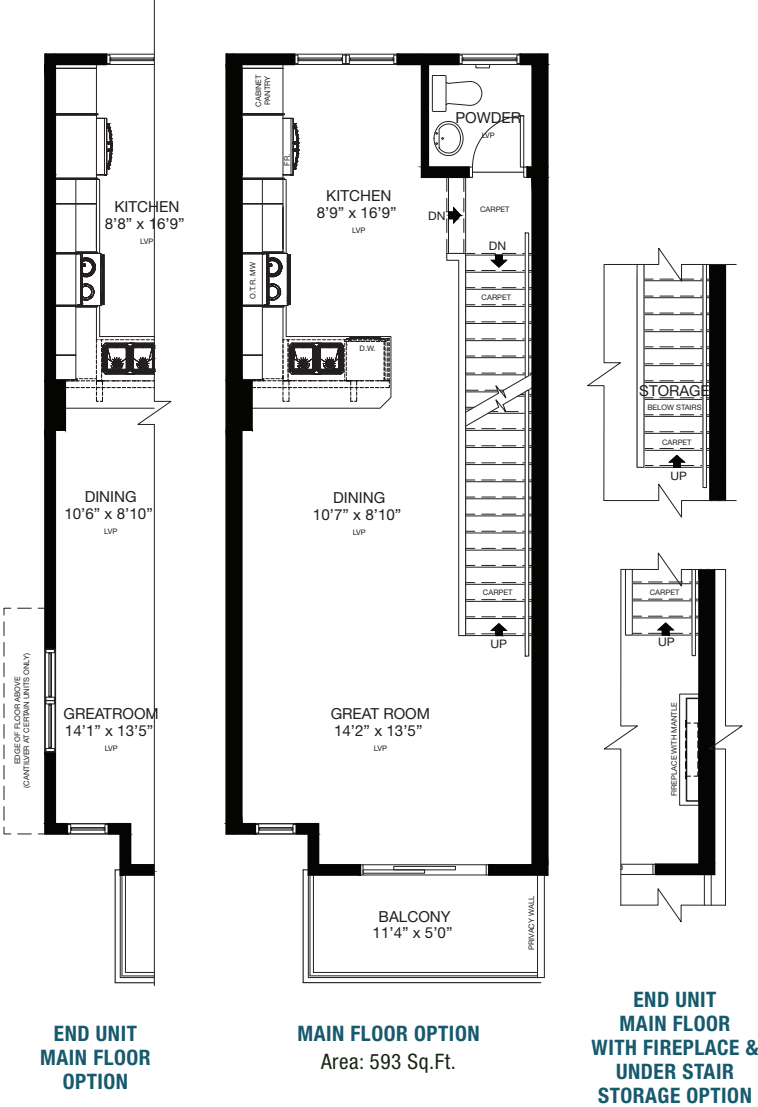
* Floorplan is an artist rendering only and may be subject to change without notice. Builder reserves the right to make modifications and changes to building design, specifications, features and floorplans without notice. Measurements and areas shown are based on pre-construction estimates and are approximate only. E.&O.E. Windows locations and sizes on these renderings are dependant on building location and elevation as approved by the City of Calgary, confirm with your sales representative exact locations. VERW-26176 Generic Floorplan Insert Sheets v6, February 2, 2022.

VERONA
WEST
TOWNHOMES

AVAILABLE
CYPRESS
MAIN FLOOR
OPTIONS

1,503 SQ.FT

TYPE 2B



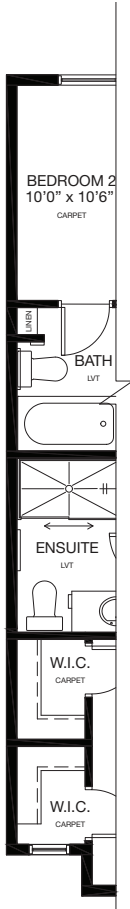
* Floorplan is an artist rendering only and may be subject to change without notice. Builder reserves the right to make modifications and changes to building design, specifications, features and floorplans without notice. Measurements and areas shown are based on pre-construction estimates and are approximate only. E.&O.E. Windows locations and sizes on these renderings are dependant on building location and elevation as approved by the City of Calgary, confirm with your sales representative exact locations. VERW-26176 Generic Floorplan Insert Sheets v6, February 2, 2022.

VERONA
WEST
TOWNHOMES

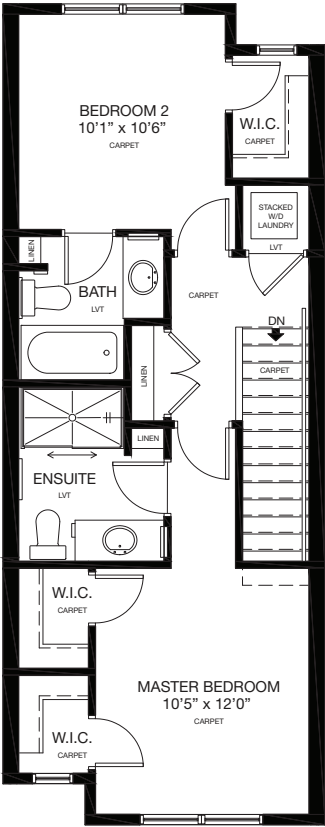
AVAILABLE
CYPRESS
UPPER FLOOR
OPTIONS

1,503 SQ.FT

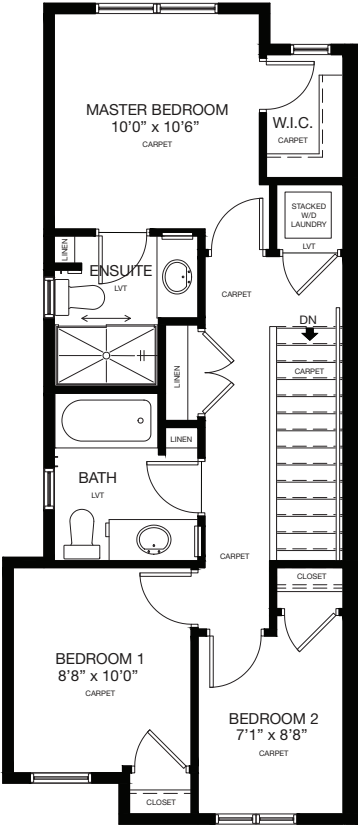
TYPE 2B



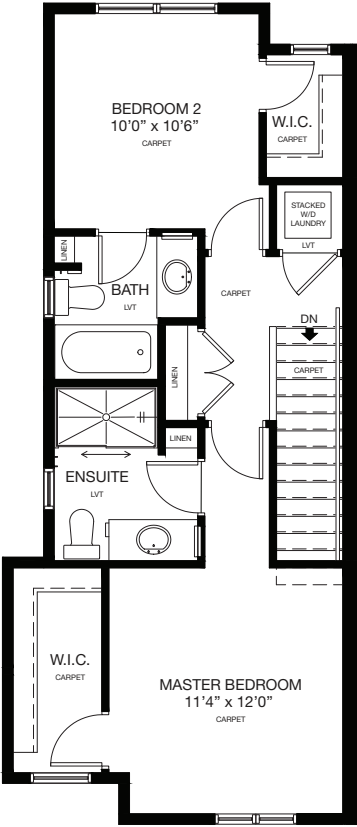
END UNIT
UPPER FLOOR
OPTION



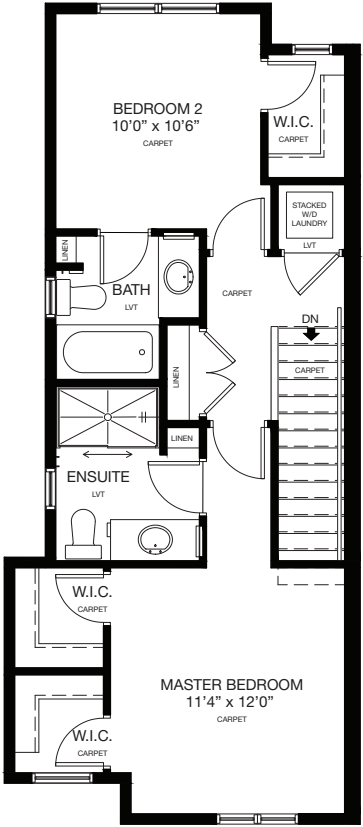
UPPER FLOOR OPTION
Area: 585 Sq.Ft.



END UNIT UPPER FLOOR
WITH CANTILEVER
Area: 607 Sq.Ft.
Total Area: 1,525 Sq.Ft.
(Block 4: Unit 1304)
(Block 9: Unit 1102 & 1120)
(Block 13: Unit 902)
(Block 17: Unit 704)



END UNIT UPPER FLOOR
2 BEDROOM WITH
CANTILEVER OPTION 1



END UNIT UPPER FLOOR
2 BEDROOM WITH
CANTILEVER OPTION 2

* Floorplan is an artist rendering only and may be subject to change without notice. Builder reserves the right to make modifications and changes to building design, specifications, features and floorplans without notice. Measurements and areas shown are based on pre-construction estimates and are approximate only. E.&O.E. Windows locations and sizes on these renderings are dependant on building location and elevation as approved by the City of Calgary, confirm with your sales representative exact locations. VERW-26176 Generic Floorplan Insert Sheets v6, February 2, 2022.