



SPRING 2025 POSSESSION



THE REGENT 1344 SQ.FT.

105 - 285 Chelsea Court



2 Bedrooms



3½ Bathrooms



Single Garage

OPTIONS INCLUDED IN THIS HOME ARE:

- Homesite facing green space
- Driftwood colour palette
- Entry level flex room with full bathroom
- Open concept main floor
- 9' Knock-down ceilings on main floor
- Upgraded semi-built-in kitchen with appliances
- Upgraded flush mounted LED lights in great room
- Zebra blinds
- Dual bedrooms with separate ensuites & walk-in closets
- LVP flooring on upper floor
- A/C rough-ins
- Gas line to deck
- Minutes away from eco-park, green space, schools, neighbourhood plaza & East Hills Shopping Centre

COME VISIT OUR SHOWHOME

259 Chelsea Road, Chestermere, AB
Call Sam Bibanco today at 587.496.8192 or
email at chelseacourt@tricohomes.com



SHOWHOME HOURS:

Mon - Thurs: 2pm - 8pm

Fri: Closed

Sat - Sun: 12pm - 5pm

PLUS RECEIVE YOUR OWN TRICO RED CARD



**& ENJOY INCREDIBLE
ONGOING SAVINGS &
REWARDS FROM OUR
PARTNERS & RETAILERS**



Chelsea Court

TOWNHOMES

Trico Homes™

The Heart of Homebuilding®



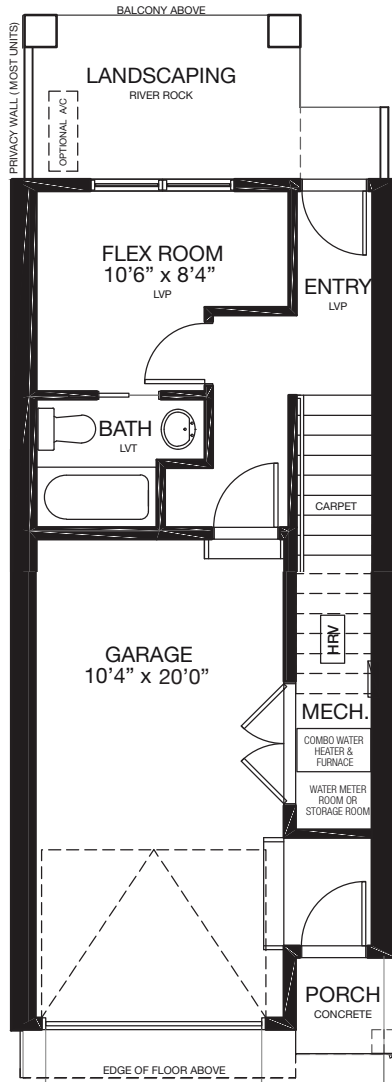
tricohomes.com



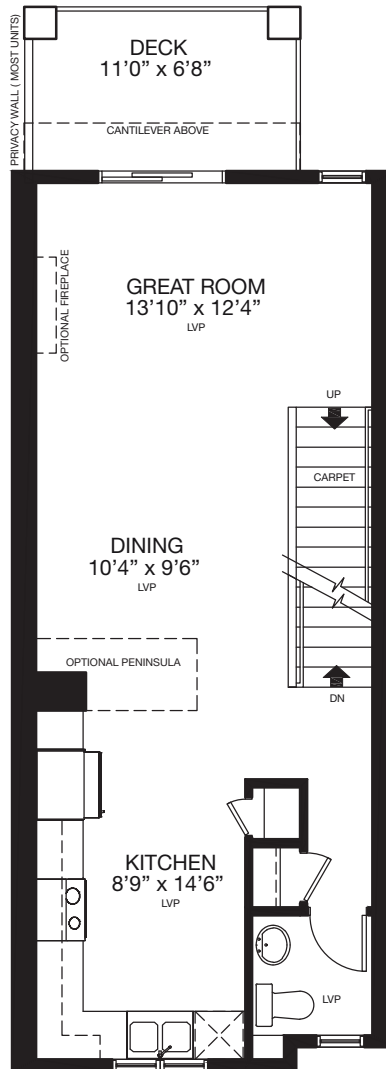
THE REGENT

1344 SQ.FT.

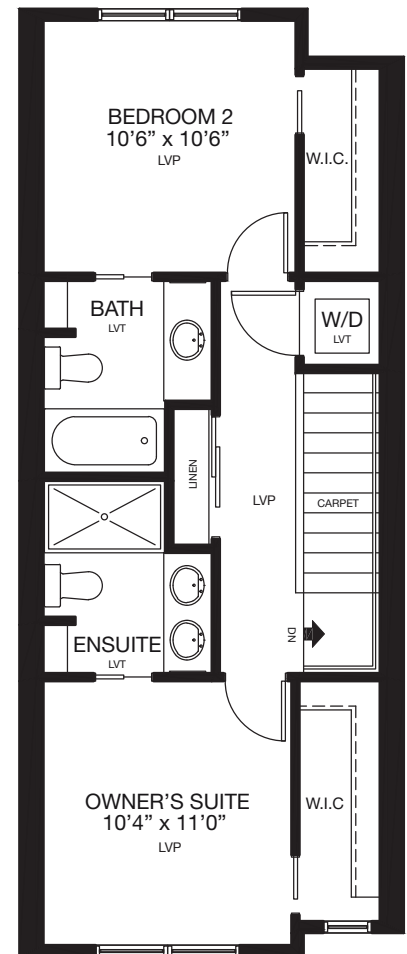
105 - 285 Chelsea Court



ENTRY
203 SQ.FT.



MAIN
559 SQ.FT.



UPPER
582 SQ.FT.



Platinum member
2004 - 2024



Renderings are artist's conceptions only and may vary by community and lot selection. Prices, floorplans, specifications and dimensions are approximate and are subject to change without notice. E.&O.E. © All rights reserved, including the right if reproduction in the whole or in part without the permission of Trico Homes.

Plan updated September 26, 2024



trichomes.com