



IMMEDIATE POSSESSION



THE REGENT 1301 SQ.FT.

104 - 285 Chelsea Court



2 Bedrooms



2½ Bathrooms



Single Garage

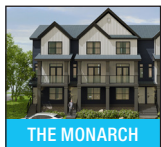
OPTIONS INCLUDED IN THIS HOME ARE:

- Homesite facing green space
- Hardie Board siding exterior
- Charcoal colour palette
- Entry level flex room with optional closet
- Open concept main floor
- Upgraded semi-built-in kitchen with appliances
- Upgraded flush mounted LED lights in great room
- 9' Knock-down ceilings on main floor
- Zebra blinds
- Dual bedrooms with separate ensuites & walk-in closets
- LVP flooring on upper floor
- A/C rough-ins
- Minutes away from eco-park, green space, schools, neighbourhood plaza & East Hills Shopping Centre

COME VISIT OUR SHOWHOME

115 & 116 - 285 Chelsea Court, Chestermere, AB

Call Sam Bibanco today at 825.540.0437 or email at chelseacourt@tricohomes.com



THE MONARCH



THE REGENT

SHOWHOME HOURS:

Mon - Thurs: 2pm - 8pm

Fri: Closed

Sat - Sun: 12pm - 5pm

**PLUS RECEIVE YOUR OWN
TRICO RED CARD**



**& ENJOY INCREDIBLE
ONGOING SAVINGS &
REWARDS FROM OUR
PARTNERS & RETAILERS**



**Chelsea
Court**
TOWNHOMES

**Trico
Homes™**
The Heart of Homebuilding®



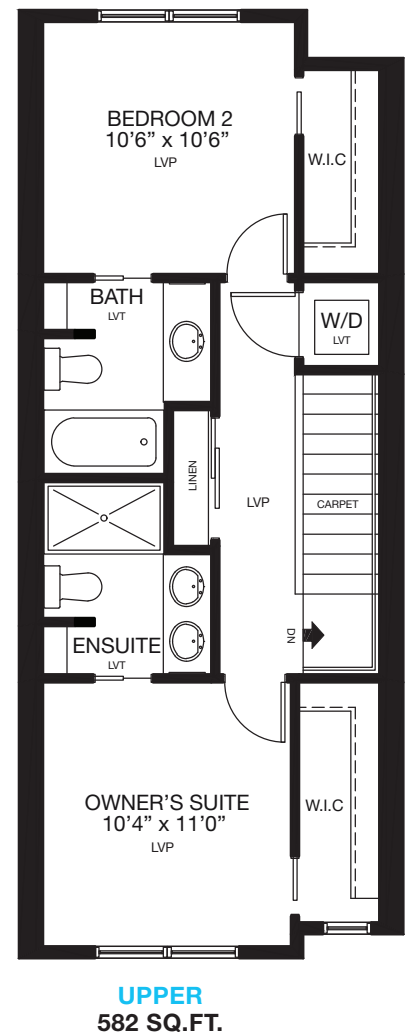
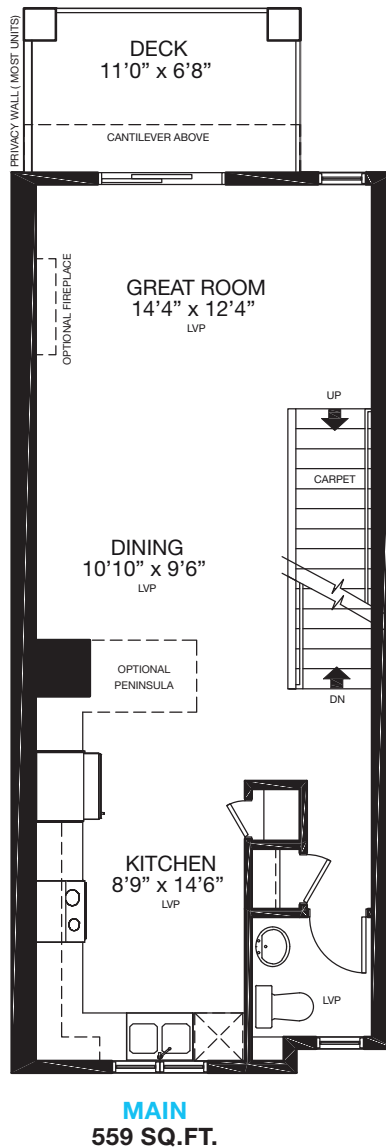
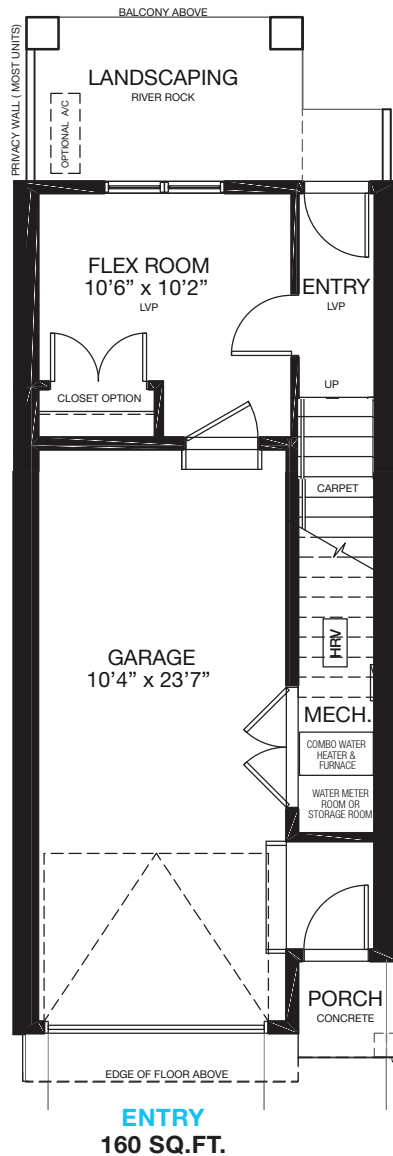
tricohomes.com



THE REGENT

1301 SQ.FT.

104 - 285 Chelsea Court



Renderings are artist's conceptions only and may vary by community and lot selection. Prices, floorplans, specifications and dimensions are approximate and are subject to change without notice. E.&O.E. © All rights reserved, including the right if reproduction in the whole or in part without the permission of Trico Homes.

Plan updated September 22, 2025



tricohomes.com