



AUGUST POSSESSION



THE CONCORD ZLL 2293 SQ.FT.

157 Wolf Hollow Drive SE



4 Bedrooms



3 Bathrooms



Double Garage

OPTIONS INCLUDED IN THIS HOME ARE:

- South-facing homesite with proximity to Bow River
- Main floor bedroom and full bathroom
- Open concept main floor
- Stainless steel appliances in kitchen
- Electric fireplace in great room
- Walk-through pantry
- Central bonus room & 3 bedrooms on upper floor
- 5-Piece owner's ensuite with corner soaker tub
- Full laundry room on upper floor
- 9' Foundation
- Gas line to deck
- 16' Wide deck with aluminum railings & stairs to grade

COME VISIT OUR SHOWHOMES

103 & 107 Wolf Creek Rise SE, Calgary, AB

Call Desirae Gersheid today at 403.457.0856 or email at wolfwillow@tricohomes.com



SHOWHOME HOURS:

Mon - Thurs: 2pm - 8pm

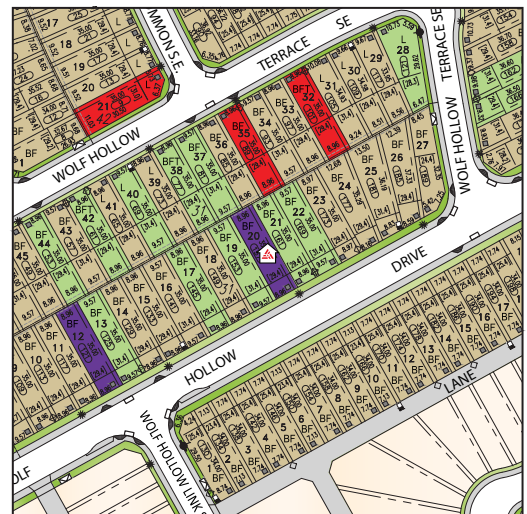
Fri: Closed

Sat - Sun: 12pm - 5pm

PLUS RECEIVE YOUR OWN TRICO RED CARD



**& ENJOY INCREDIBLE
ONGOING SAVINGS &
REWARDS FROM OUR
PARTNERS & RETAILERS**



WOLF WILLOW



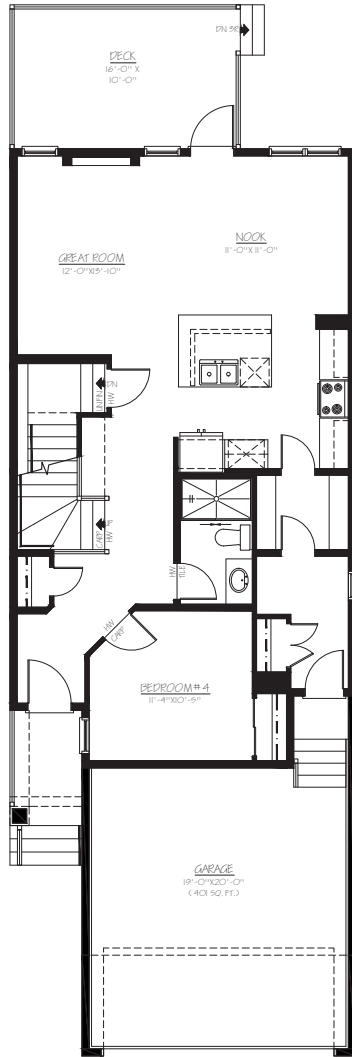
tricohomes.com



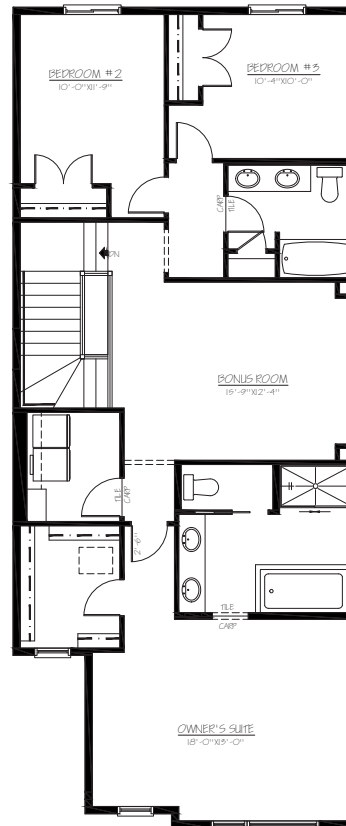
THE CONCORD ZLL

2293 SQ.FT.

157 Wolf Hollow Drive SE



MAIN
991 SQ.FT.



UPPER
1302 SQ.FT.



Renderings are artist's conceptions only and may vary by community and lot selection. Prices, floorplans, specifications and dimensions are approximate and are subject to change without notice. E.&O.E. © All rights reserved, including the right of reproduction in the whole or in part without the permission of Trico Homes.

Plan updated May 5, 2025



tricohomes.com