
 3 Bedrooms

 2½ Bathrooms

 Double Garage

THE CONCORD

2280 SQ.FT.

☐ Elements Specification

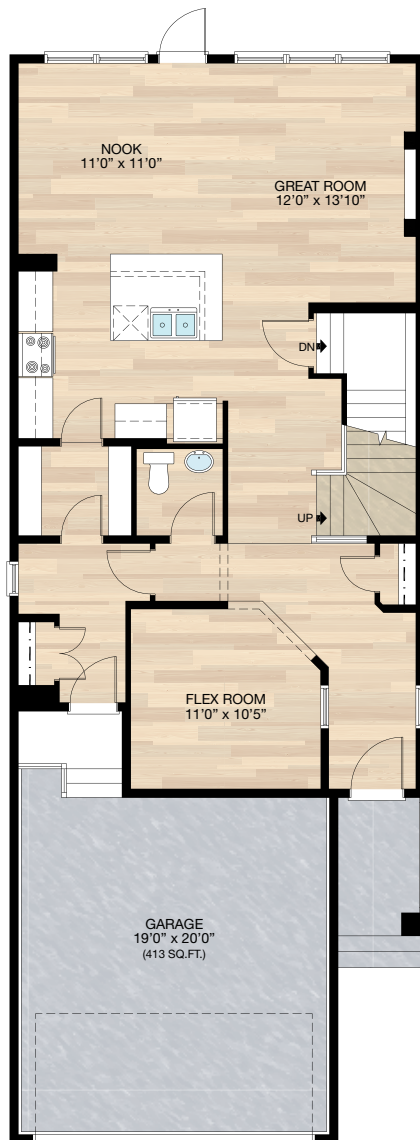
☐ Elite Specification



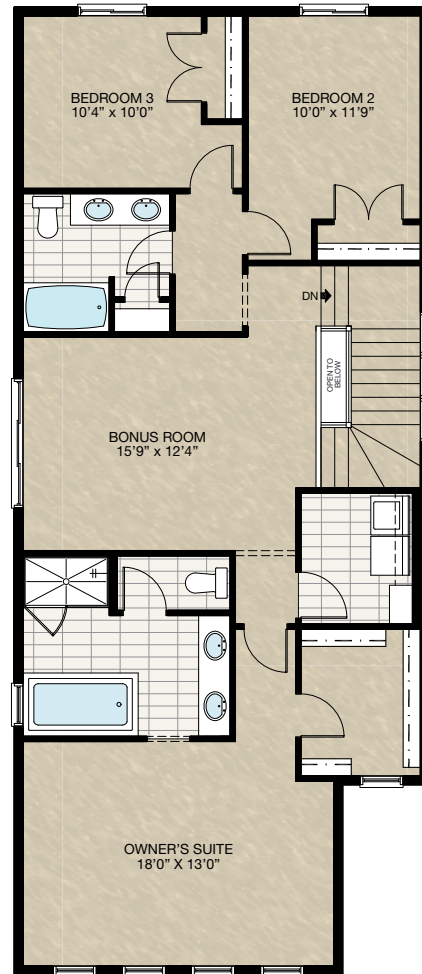
Trico Homes™
The Heart of Homebuilding®

STANDARD PLAN

THE
CONCORD
2280 SQ.FT.



MAIN
1000 SQ.FT.



UPPER
1280 SQ.FT.

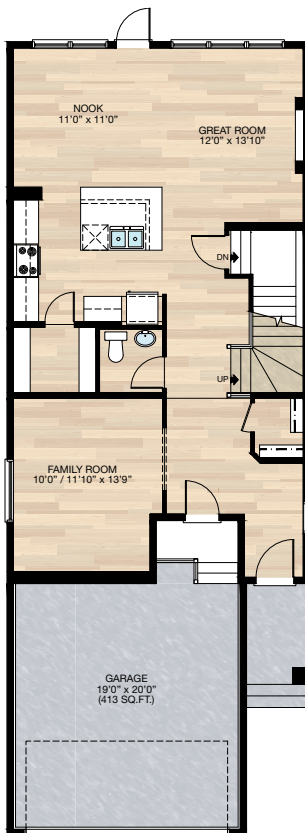
HARDWOOD	DECK	CARPET	CONCRETE	TILE	LAMINATE	LINO
----------	------	--------	----------	------	----------	------

FEATURED OPTIONS

THE
CONCORD
2280 SQ.FT.

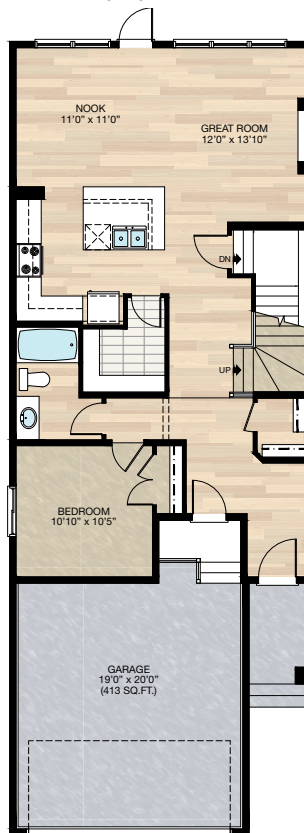
SELECT-7 FAMILY ROOM OPTION

- Delete 24" x 60" P window & mudroom
- Add 60" x 24" P window to family room
- Change standard closet to walk-in closet to front entry
- Relocate garage stairs



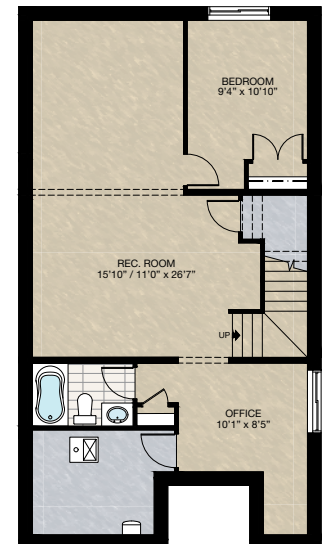
SELECT-8 MAIN FLOOR BEDROOM OPTION

- Delete 24" x 60" P window & mudroom
- Add 48" x 40" HSL window to bedroom
- Walk-in closet to front entry
- Add 3-piece bath
- Relocate garage stairs



SELECT-9 BASEMENT DEVELOPMENT FOR SELECT-7, 8 & 12 OPTION

- 741 Sq.Ft. of developed area
- Includes finished basement stairwell
- Move 2'8" passage door from top of stairwell to mech. room
- Add 1 riser to stairwell for 9'0" basement ceiling (8'9" headroom clearance)
- 60" x 24" Windows changed to 60" x 36"



Trico Homes is a local home builder, with new single and multi-family homes for sale in Calgary, Okotoks, Chestermere, Cochrane, Airdrie and DeWinton. Offering a great selection of starter, move-up, semi-estate and ultra-estate models in numerous communities, you'll find the house that's just right for you! Look for this model and many others in Ambleton, Arbour Lake, Belmont, Carrington, Chelsea, Cornerbrook, D'Arcy, Dawson's Landing, Glacier Ridge, Hamilton Heights, Homestead, Legacy, Midtown, Pine Creek, Precedence, Rivercrest, Seton, Sirocco, Verona West Townhomes, West83 Townhomes and Wolf Willow.



Renderings are artist's conceptions only and may vary by community and lot selection. Prices, floorplans, specifications and dimensions are approximate and are subject to change without notice. E.&O.E. © All rights reserved, including the right of reproduction in the whole or in part without the permission of Trico Homes.

Plan updated as of April 13, 2023.



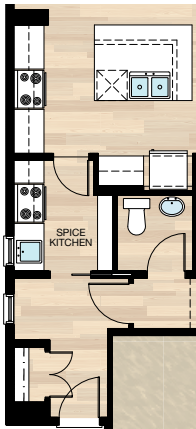
tricohomes.com

FEATURED OPTIONS

← 32' →
Min. Lot Width

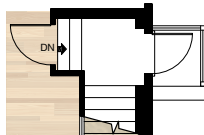
SELECT-1 SPICE KITCHEN OPTION

- Mech. void space end of kitchen cabinet moved towards nook 12"
- Delete 14" upper & lower cabinet in main kitchen
- Delete (8) 16" wire shelves in pantry
- Add (6) 12" wire shelves in spice kitchen
- Add 24" x 40" VSL
- Delete 2'4" door
- Add 2'8" pocket door



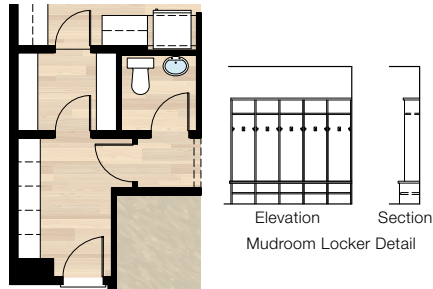
SELECT-4 SIDE ENTRANCE OPTION

- Add 2'8" exterior door
- Add concrete porch with aluminum railing (up to 2 risers)
- Add switch & exterior light to side entrance
- Add one 3-way switch

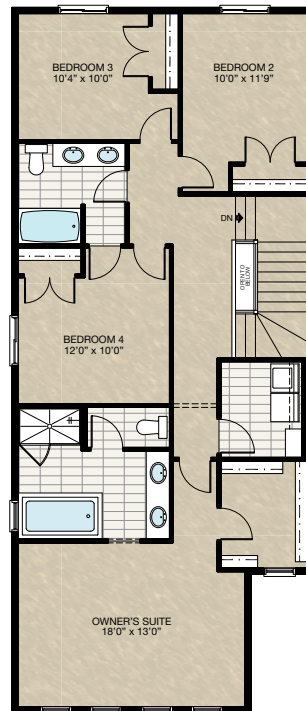


SELECT-2 MUDROOM LOCKER OPTION

- Delete 24" x 60" P window in mudroom
- Delete closet in mudroom

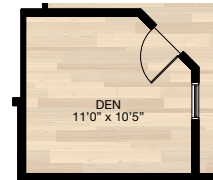


SELECT-5 UPPER FLOOR FOUR BEDROOM OPTION



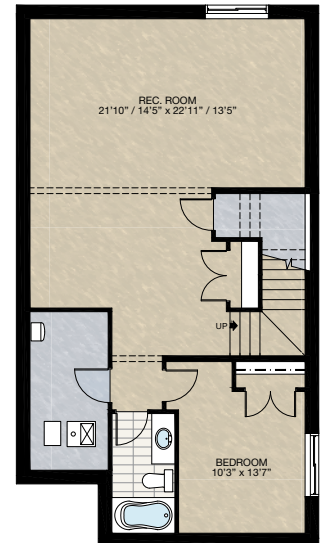
SELECT-3 DEN OPTION

- Add 2'6" French door



SELECT-6 BASEMENT DEVELOPMENT OPTION

- 750 Sq.Ft. of basement development
- Includes finished basement stairwell
- Move 2'8" passage door from top of stairwell to mech. room
- Add 1 riser to stairwell for 9' basement ceiling (8'9" headroom clearance)
- 60" x 24" Windows changed to 60" x 36"



HARDWOOD

DECK

CARPET

CONCRETE

TILE

LAMINATE

LINO

tricohomes.com