

 5 Bedroom

 4 Bathrooms

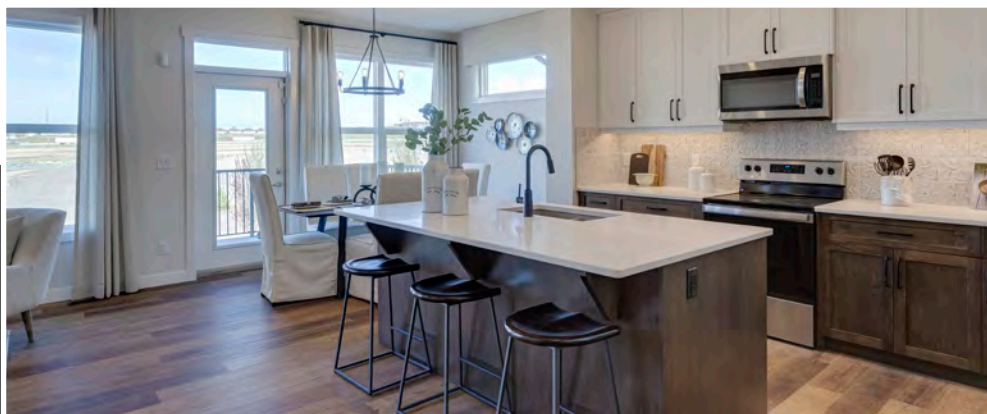
 Double Garage

THE SPRINGHILL

2664 SQ.FT.

☐ Elements Specification

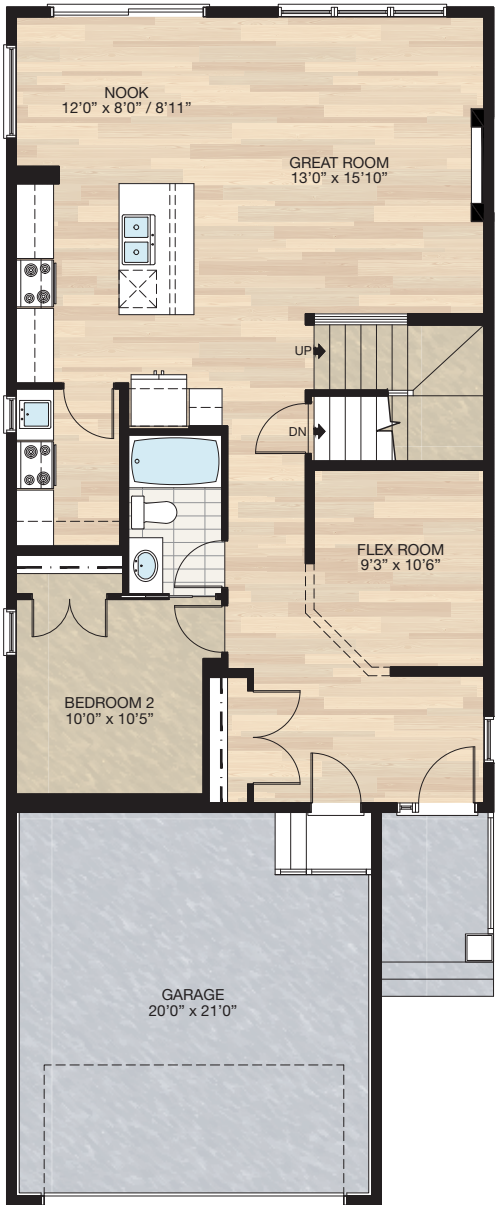
☐ Elite Specification



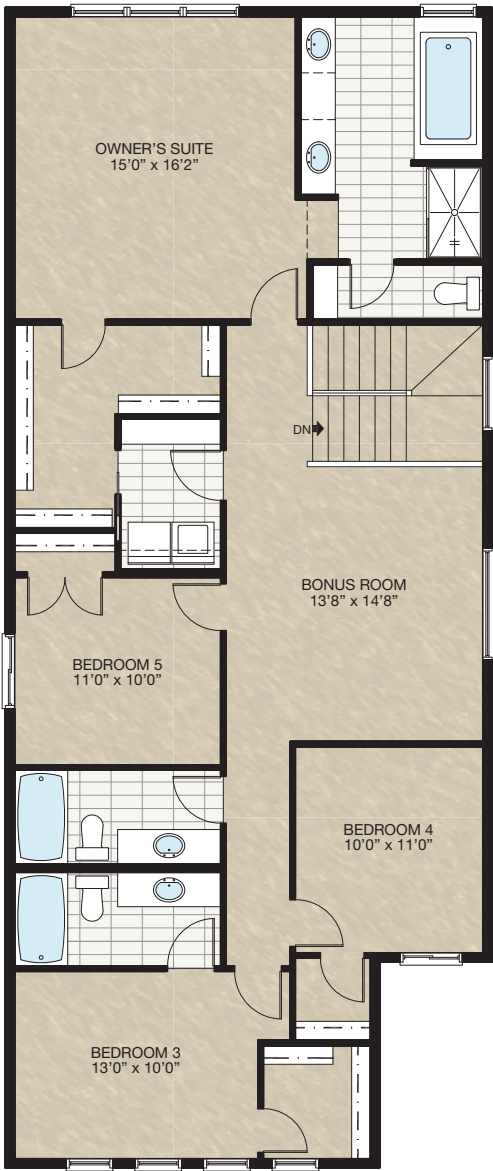
Trico Homes™
The Heart of Homebuilding®

STANDARD PLAN

THE
SPRINGHILL
2664 SQ.FT.



MAIN
1118 SQ.FT.



UPPER
1546 SQ.FT.

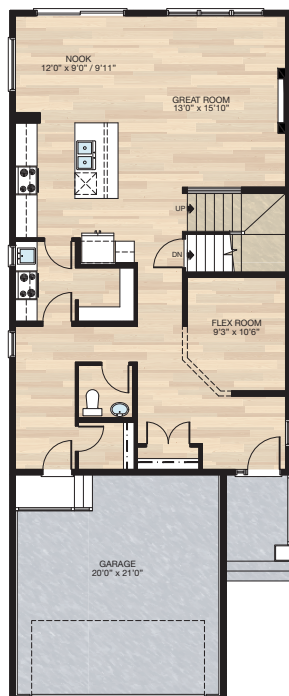


FEATURED OPTIONS



SELECT-1 SPICE KITCHEN, PANTRY & MUDROOM OPTION

- Delete Bedroom 2
- Delete tub/shower unit & vanity
- Kitchen moves towards garage 12" to increase nook size
- Decrease spice kitchen lower cabinet 12" & add 24" of upper cabinets
- Add pantry to spice kitchen
- Move 2'8" spice kitchen door to mudroom & replace with 2'6" door
- Change front entry closet doors from two 2'0" to two 2'6"
- Move garage door to mudroom
- Adjust window in mudroom



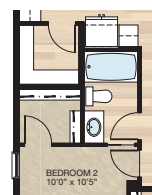
SELECT-2 PANTRY & MUDROOM OPTION

- Delete spice kitchen & replace with pantry shelves
 - Reduce pantry 7.5" this space is added to mudroom & walk-in closet
 - Mudroom window & lighting adjusted
 - Pantry door reduced to 2'6"
- *MUST be combined with **SELECT-1**



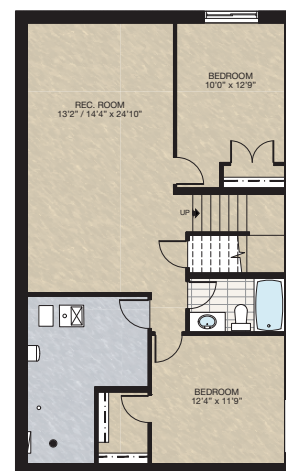
SELECT-3 PANTRY & WALK-IN CLOSET OPTION

- Delete spice kitchen
- Delete 24" x 40" window
- Change 2'8" door to 2'6" door to new pantry
- Add pantry shelving
- Change two 2'0" doors to 2'6" door to bedroom closet
- Add light & switch to bedroom closet
- Add additional shelving to bedroom closet



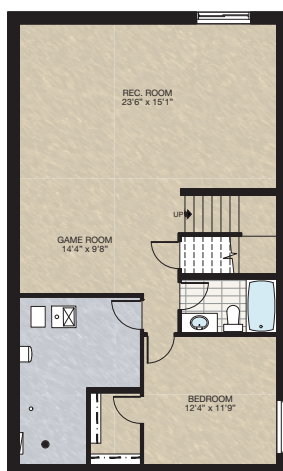
SELECT-5 BASEMENT DEVELOPMENT OPTION 2

- 815 Sq.Ft. developed area
- Includes finished basement stairwell
- Delete 2'8" door at top of stairwell
- Add one riser to stairwell for 9'0" basement ceiling (8'9" headroom clearance)
- 60" x 24" DHSL changed to 60" x 36" DHSL
- 60" x 24" HSL changed to 60" x 36" HSL



SELECT-4 BASEMENT DEVELOPMENT OPTION 1

- 815 Sq.Ft. developed area
- Includes finished basement stairwell
- Delete 2'8" door at top of stairwell
- Add one riser to stairwell for 9'0" basement ceiling (8'9" headroom clearance)
- 60" x 24" DHSL changed to 60" x 36" DHSL
- 60" x 24" HSL changed to 60" x 36" HSL



HARDWOOD

DECK

CARPET

CONCRETE

TILE

LVP

tricohomes.com

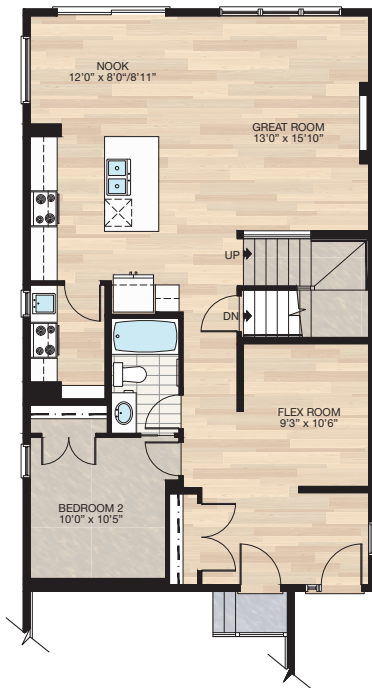
FEATURED SPRINGHILL OPTIONS



SELECT-8

ALTERNATIVE SPICE KITCHEN OPTION

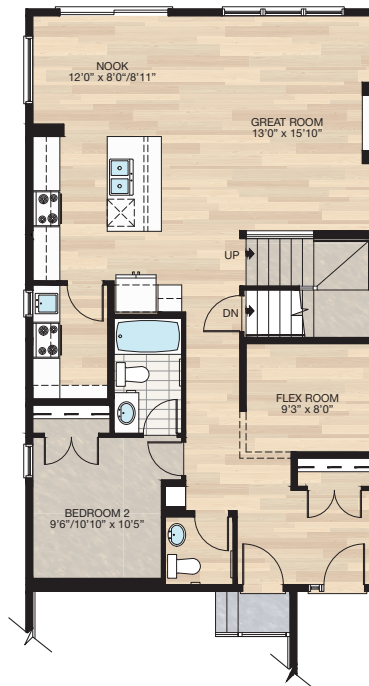
- Reduced lower cabinet space by 15" at spice kitchen
 - Added 21" upper cabinet to spice kitchen
 - Deleted two 66"x 16" wire shelving
 - Added four 39" x 12" wire shelving
- *CANNOT be combined with **SELECT-1,2 & 3** main floor options



SELECT-9

MAIN FLOOR HALF BATH OPTION

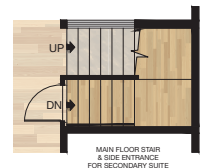
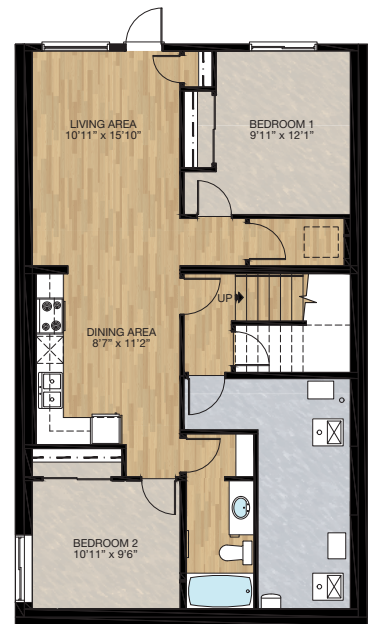
- Reduced bedroom 2 to accommodate half bath space
- Reduced flex room size to accommodate foyer closet
- Relocated foyer closet
- Added MDF capped niche
- Deleted 2'6" pocket door to bathroom in bedroom 2
- Change flush beam above foyer closet to drop beam to allow mechanical access to upper floor



SECONDARY SUITE

WALK-OUT OPTION

- 822 Sq.Ft. Basement development
- Included finished basement stairwell
- Add 1 riser to stairwell for 9' basement ceiling (8'9" headroom clearance)
- Change window from 60" x 24" DHS to 60" x 36" DHS at bedroom 2
- Rear windows and rear exterior entrance included with walkout basement upgrade



HARDWOOD

DECK

CARPET

CONCRETE

TILE

LVP

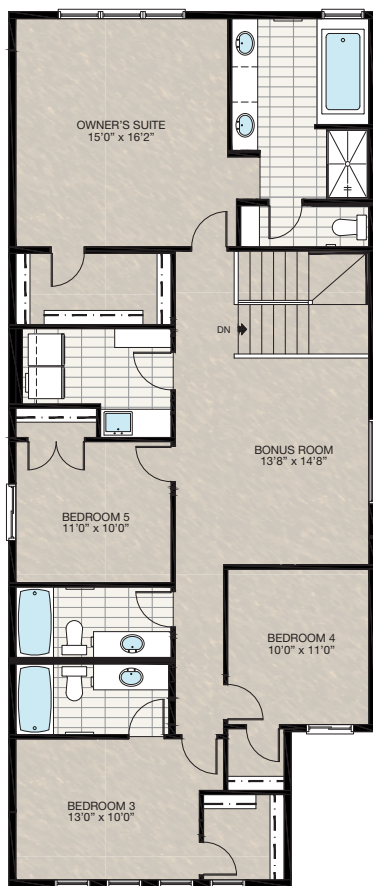
FEATURED SPRINGHILL OPTIONS



SELECT-10

LAUNDRY ROOM OPTION

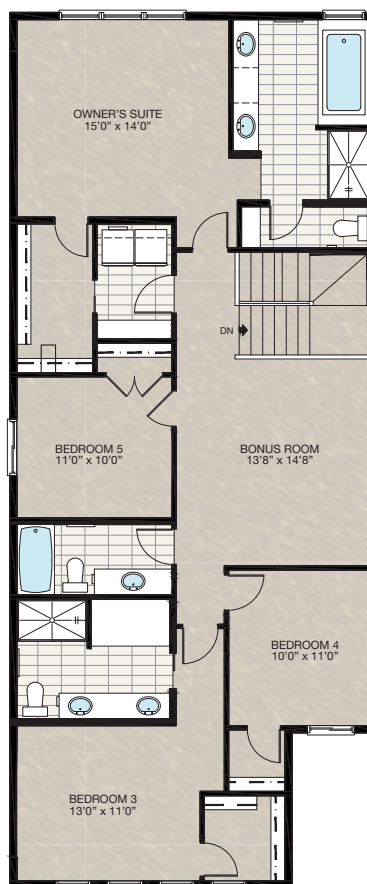
- Reduced owner's bedroom WIC wire shelving
- Deleted 3-way switch at owner's suite WIC
- Reduced laundry room linen shelving length by 16"
- Deleted 2'4" pocket door between WIC and laundry room
- Added 60" lower cabinet with sink



SELECT-11

SECOND ENSUITE 5 PIECE OPTION

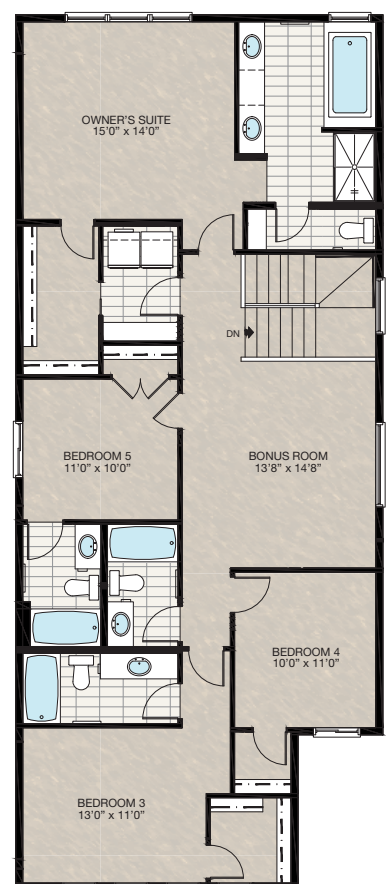
- Reduced owner's suite by 2'0"
- Redesigned owner's suite WIC & laundry area
- Deleted 3-way switch at owner's suite WIC
- Additional 1'0" to bedroom 2



SELECT-12

UPPER FLOOR 4 BATHROOM OPTION

- Reduced owner's suite by 2'0"
- Redesigned owner's suite WIC & laundry area
- Deleted 3-way switch at owner's suite WIC
- Additional 1'0" to bedroom 2



HARDWOOD

DECK

CARPET

CONCRETE

TILE

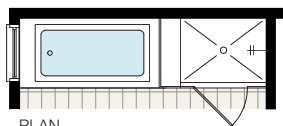
LVP

FEATURED OPTIONS

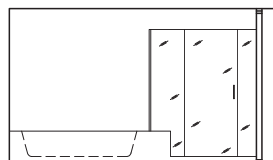
THE
SPRINGHILL
2664 SQ.FT.

SELECT-7 GLASS & TILE ENSUITE SHOWER

- Delete fibreglass shower tray
- Add 10mm glass, tile curb & shower base
- Extend tub tiled deck



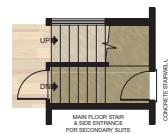
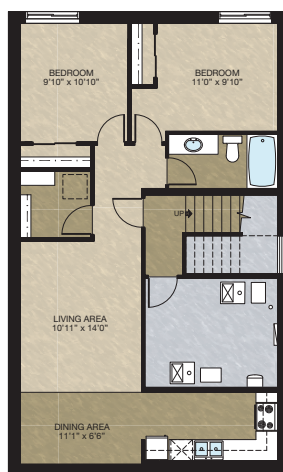
PLAN



ELEVATION

SECONDARY SUITE BASEMENT DEVELOPMENT OPTION 1

- 815 Sq.Ft. Developed area
- Includes finished basement stairwell
- Delete 2'8" door at top of stairwell
- Add one riser to stairwell for 9'0" basement ceiling (8'9" headroom clearance)
- 60" x 24" DHSL changed to 60" x 36" DHSL
- 60" x 24" HSL changed to 60" x 36" HSL



Trico Homes is a local home builder, with new single and multi-family homes for sale in Calgary, Okotoks, Chestermere, Cochrane, Airdrie and DeWinton. Offering a great selection of starter, move-up, semi-estate and ultra-estate models in numerous communities, you'll find the house that's just right for you! Look for this model and many others in Ambleton, Arbour Lake, Belmont, Carrington, Chelsea, Cornerbrook, D'Arcy, Dawson's Landing, Glacier Ridge, Hamilton Heights, Homestead, Legacy, Midtown, Pine Creek, Precedence, Rivercrest, Seton, Sirocco, Verona West Townhomes, West83 Townhomes and Wolf Willow.



Renderings are artist's conceptions only and may vary by community and lot selection. Prices, floorplans, specifications and dimensions are approximate and are subject to change without notice. E.&O.E. © All rights reserved, including the right of reproduction in the whole or in part without the permission of Trico Homes.

Plan updated as of April 6, 2023.



tricohomes.com