





## SEPTEMBER POSSESSION



# THE RAEYA ZLL 1822 SQ.FT.

180 Annette Villas NW

 3 Bedrooms

 3 Bathrooms

### OPTIONS INCLUDED IN THIS HOME ARE:

- Corner homesite near future green spaces & community center
- 2-Bedroom legal secondary suite
- Main floor flex room & full bathroom with standing shower
- Open concept main floor
- 36" Upper cabinetry with risers extending to ceiling
- 9' Knock-down ceilings on main floor
- Hardwood throughout main floor
- 3-Bedrooms with central bonus room on upper floor
- Full laundry room on upper floor
- 4-Piece owner's ensuite & spacious walk-in closet
- 9' Foundation
- Rear deck with stairs to grade

### COME VISIT OUR SHOWHOMES

170 & 174 Mitchell Road NW, Calgary, AB

Call Justin Rampersad today at 403.972.0702 or email at [glacrieridgelaned@tricohomes.com](mailto:glacrieridgelaned@tricohomes.com)



THE RAEYA



THE SANDALWOOD

### SHOWHOME HOURS:

Mon - Thurs: 2pm - 8pm

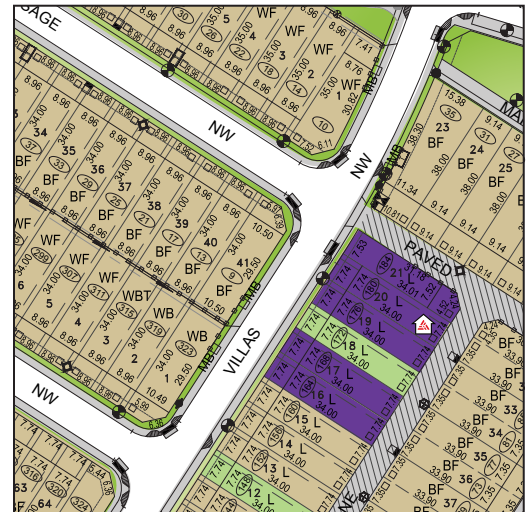
Fri: Closed

Sat - Sun: 12pm - 5pm

PLUS RECEIVE YOUR OWN  
**TRICO RED CARD**



**& ENJOY INCREDIBLE  
ONGOING SAVINGS &  
REWARDS FROM OUR  
PARTNERS & RETAILERS**



GLACIER RIDGE

**Trico  
Homes™**  
The Heart of Homebuilding®



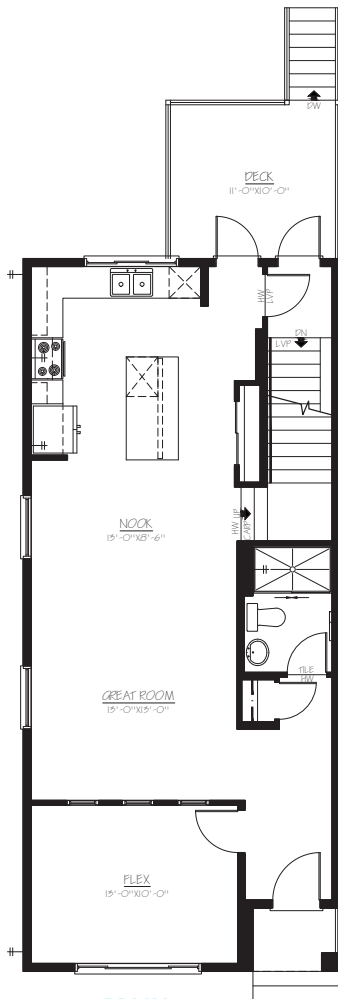
[tricohomes.com](http://tricohomes.com)



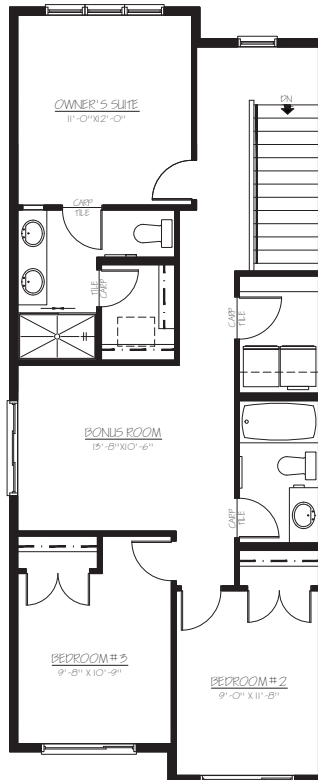
# THE RAEYA ZLL

1822 SQ.FT.

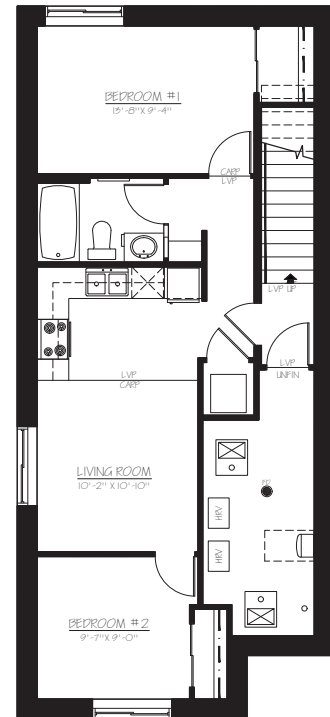
180 Annette Villas NW



**MAIN**  
878 SQ.FT.



**UPPER**  
924 SQ.FT.



**SECONDARY SUITE**  
633 SQ.FT.



Renderings are artist's conceptions only and may vary by community and lot selection. Prices, floorplans, specifications and dimensions are approximate and are subject to change without notice. E.&O.E. © All rights reserved, including the right if reproduction in the whole or in part without the permission of Trico Homes.

Plan updated June 26, 2025



tricohomes.com