



FALL POSSESSION



THE LAWSON ZLL 2538 SQ.FT.

38 Marmot Passage NW



5 Bedrooms



4 Bathrooms



Double Garage

OPTIONS INCLUDED IN THIS HOME ARE:

- Walkout basement homesite backing onto green space
- Main floor bedroom & full bathroom with standing shower
- Main floor flex room
- 42" Upper cabinetry & crown moulding in kitchen
- Built-in stainless steel appliances in kitchen
- 9' Knock-down ceilings on main floor
- Hardwood throughout main floor
- Central bonus room on upper floor
- 4-Bedroom layout with dual ensuite bedrooms
- Full laundry room
- 5-Piece owner's ensuite & spacious walk-in closet
- 9' Foundation
- Full rear deck

COME VISIT OUR SHOWHOMES

177 & 181 Mitchell Road NW, Calgary, AB

Call Justin Rampersad today at 403.972.0702 or
email at glacierreidge@tricohomes.com



THE CONCORD



THE OXFORD II

SHOWHOME HOURS:

Mon - Thurs: 2pm - 8pm

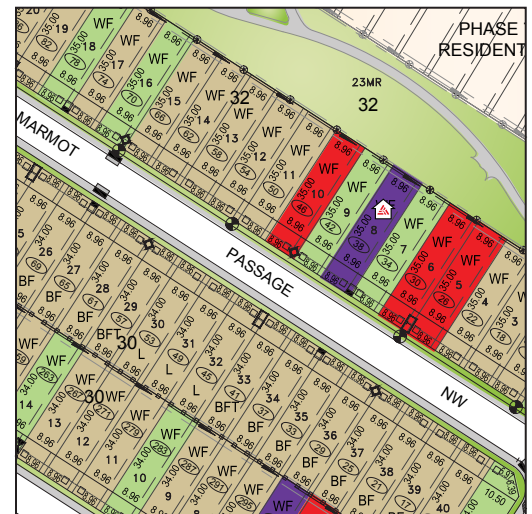
Fri: Closed

Sat - Sun: 12pm - 5pm

PLUS RECEIVE YOUR OWN TRICO RED CARD



& ENJOY INCREDIBLE
ONGOING SAVINGS &
REWARDS FROM OUR
PARTNERS & RETAILERS



GLACIER RIDGE



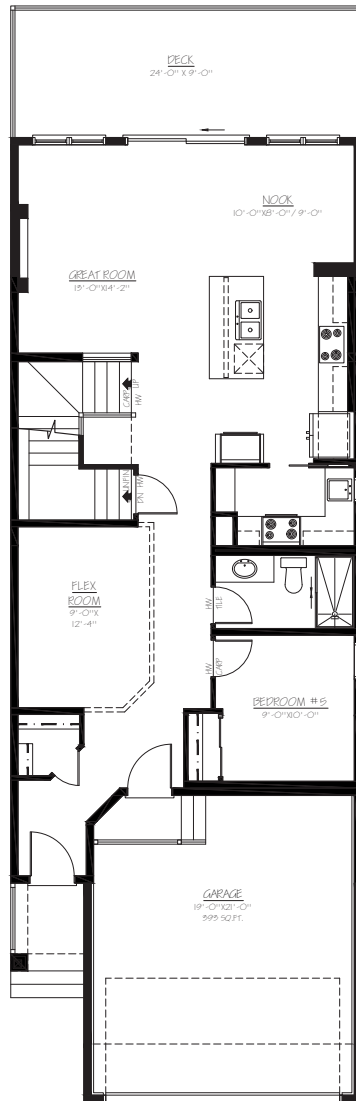
tricohomes.com



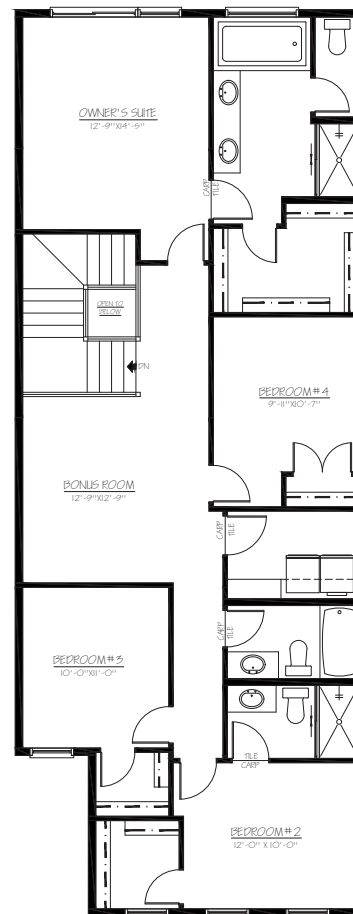
THE LAWSON ZLL

2538 SQ.FT.

38 Marmot Passage NW



MAIN
1116 SQ.FT.



UPPER
1422 SQ.FT.



Renderings are artist's conceptions only and may vary by community and lot selection. Prices, floorplans, specifications and dimensions are approximate and are subject to change without notice. E.&O.E. © All rights reserved, including the right if reproduction in the whole or in part without the permission of Trico Homes.

Plan updated June 23, 2025



tricohomes.com