



MARCH 2025 POSSESSION



THE HARRINGTON

2121 SQ.FT.

177 Wolf Hollow Villas SE

3 Bedrooms 2½ Bathrooms Double Garage

OPTIONS INCLUDED IN THIS HOME ARE:

- Walkout homesite backing onto Fish Creek Provincial Park
- Close to parks, trails, the Bow River & Blue Devil Golf Club
- Upgraded built-in stainless steel kitchen appliances & gas cooktop
- Cabinets with risers & under cabinet lighting
- Quartz kitchen countertops
- Walk-through pantry
- Electric fireplace in great room
- Central bonus room on upper floor
- 5-Piece owner's ensuite with glass & tile shower
- Basement development with recreation room, bedroom & full bath
- Extended garage
- Gas line to 13x10 rear deck

COME VISIT OUR SHOWHOMES

103 & 107 Wolf Creek Rise SE, Calgary, AB

Call Desirae Gersheid today at 403.457.0856 or email at wolfwillow@tricohomes.com



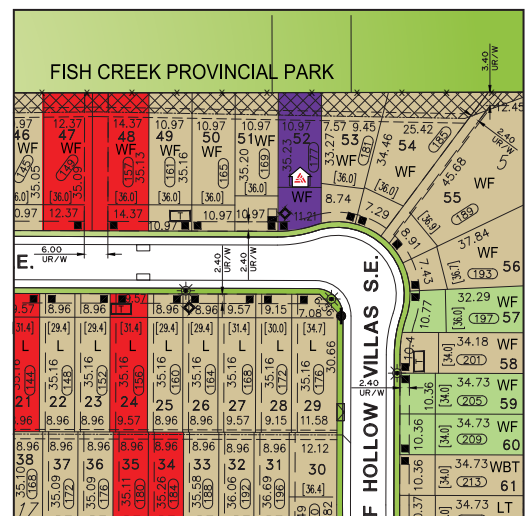
SHOWHOME HOURS:

Mon - Thurs: 2pm - 8pm
Fri: Closed
Sat - Sun: 12pm - 5pm

PLUS RECEIVE YOUR OWN TRICO RED CARD



& ENJOY INCREDIBLE ONGOING SAVINGS & REWARDS FROM OUR PARTNERS & RETAILERS



WOLF WILLOW



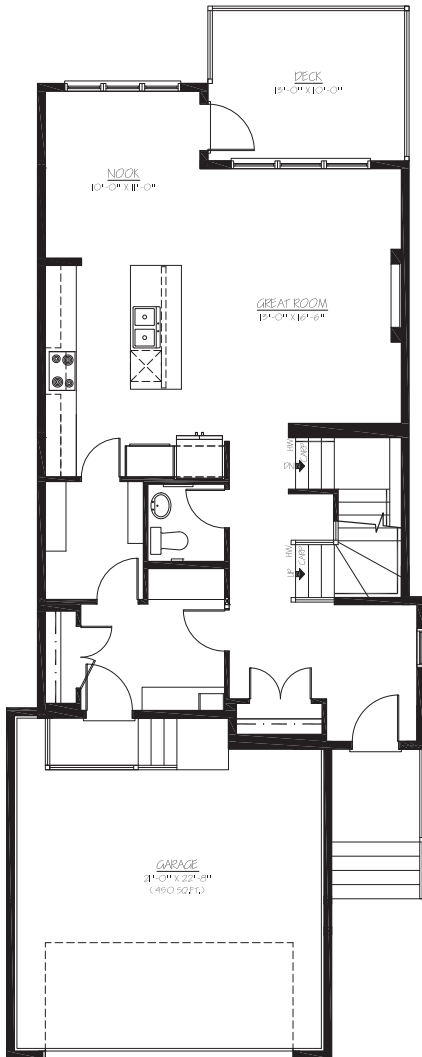
tricohomes.com



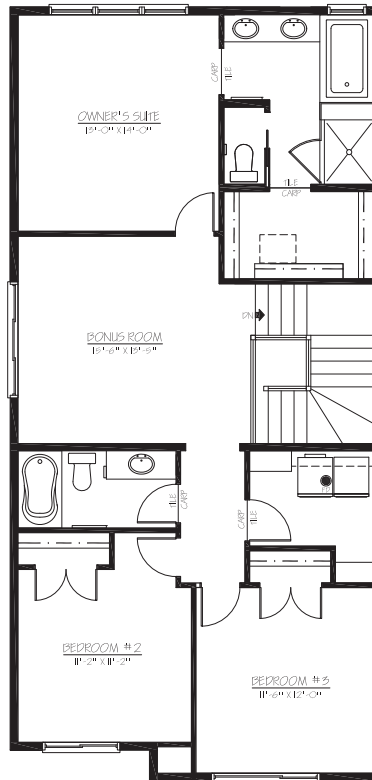
THE HARRINGTON

2121 SQ.FT.

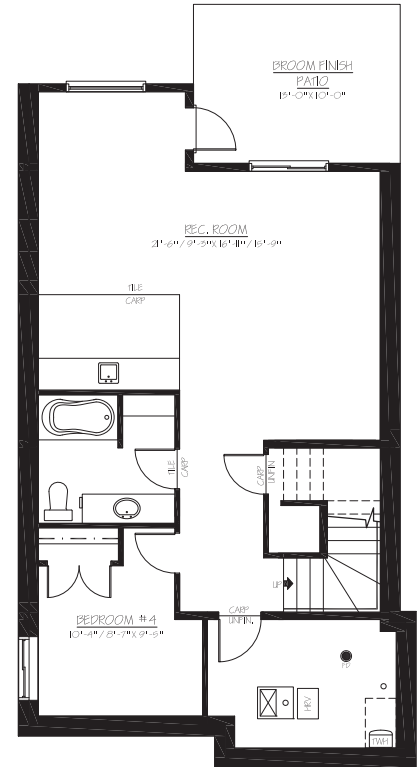
177 Wolf Hollow Villas SE



MAIN
952 SQ.FT.



UPPER
1169 SQ.FT.



BASEMENT
698 SQ.FT.



Renderings are artist's conceptions only and may vary by community and lot selection. Prices, floorplans, specifications and dimensions are approximate and are subject to change without notice. E.&O.E. © All rights reserved, including the right if reproduction in the whole or in part without the permission of Trico Homes.

Plan updated December 20, 2024



tricohomes.com