



 ← 40' →
 Min. Lot Width

-  3 Bedrooms
-  2½ Bathrooms
-  Double Garage

THE GREYSTONE

2891 SQ.FT.

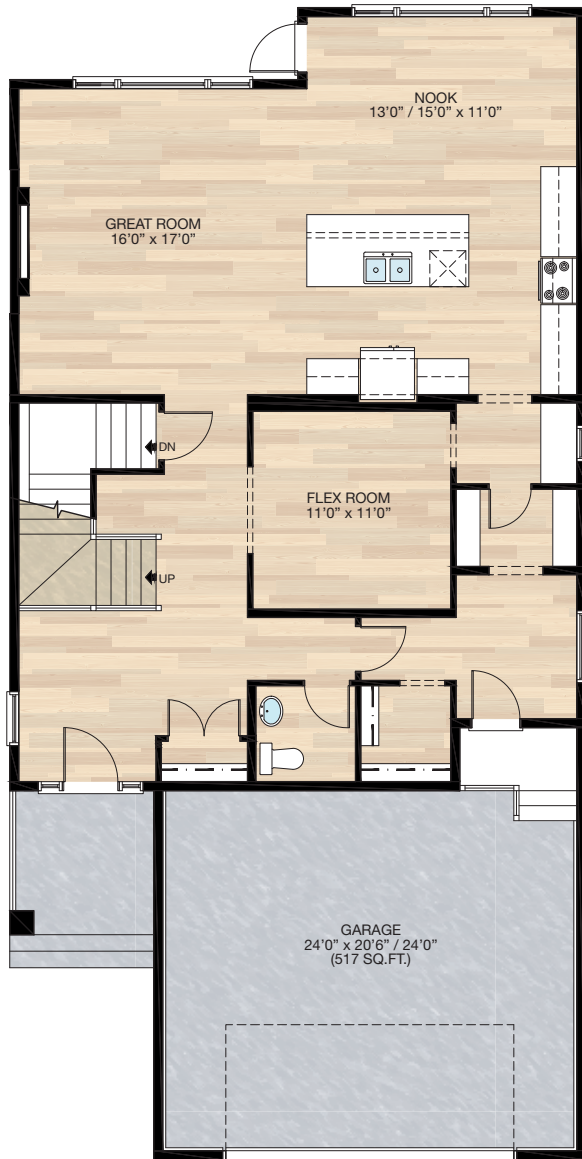
Elements Specification
 Elite Specification



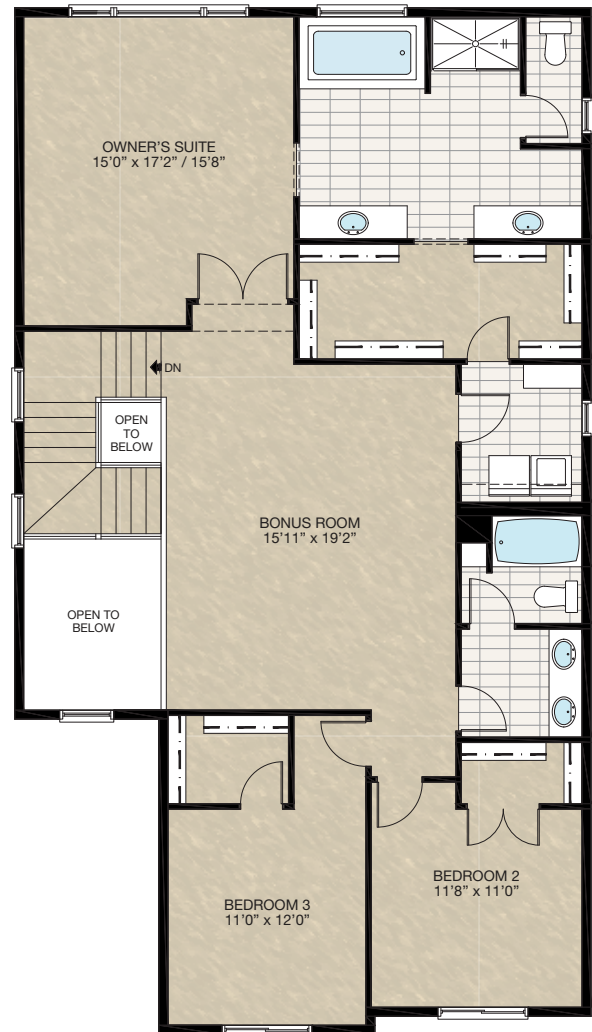
Trico Homes™
 The Heart of Homebuilding®

STANDARD PLAN

THE GREYSTONE
2891 SQ.FT.



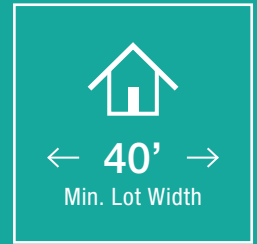
MAIN
1304 SQ.FT.



UPPER
1587 SQ.FT.

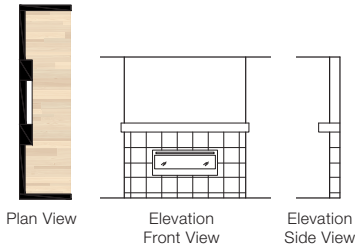


FEATURED OPTIONS



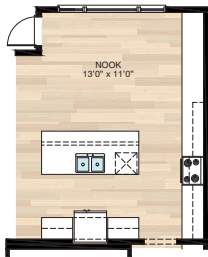
SELECT-1 FIREPLACE OPTION

- Add MDF modern mantle & tiled face



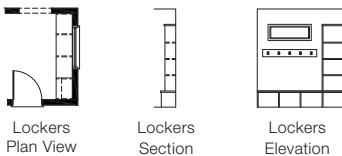
SELECT-2 KITCHEN OPTION

- Additional 8'4" of lower cabinetry to kitchen
- Re-center nook window



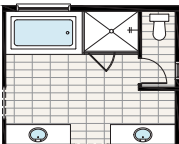
SELECT-3 MUDROOM MDF LOCKER OPTION

- Mudroom window re-center to the locker built-in



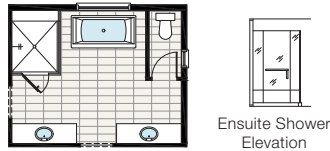
SELECT-4 ENSUITE OPTION 1

- Delete 60" x 36" acrylic shower base with tiled walls & 6mm glass sliding
- Add 60" x 48" tiled shower with 10mm glass



SELECT-5 ENSUITE OPTION 2

- Delete 60" x 36" acrylic shower base with tiled walls & 6mm glass sliding
- Add 54" x 72" tiled shower with 10mm glass & 12" tiled bench C/W towel bar handle
- Delete 72" x 36" soaker tub & 6" tiled deck
- Add 72" x 36" freestanding soaker tub
- Relocate water closet door
- Ensuite window centered to tub



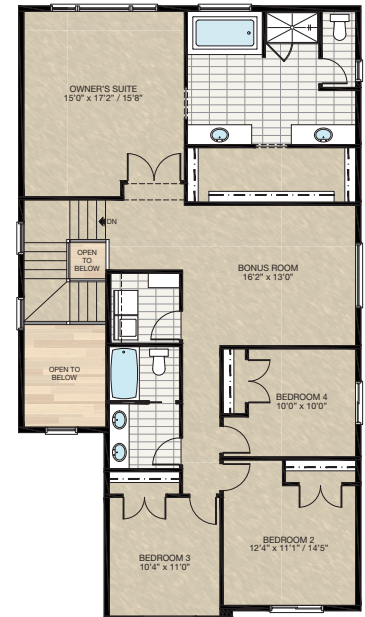
SELECT-6 3 BATHROOMS OPTION

- Add 3-piece bath to bedroom 3 with 42" long vanity
- Delete second sink & 24" vanity in main bath
- Delete 4 - 16" wire shelving in main bath
- Add 2'4" pocket door between main bath & Bedroom 2 WIC
- Increased 27" wire shelving to bedroom 2 WIC
- Change double 2'0" closet doors to 2'4" door to Bedroom 2 WIC
- Reduced bonus room to accommodate third bathroom
- Reconfigure laundry room
- Reconfigure shelving in owner's suite WIC

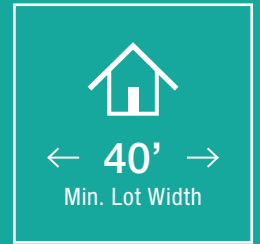


SELECT-7 4 BEDROOMS OPTION

- Relocate main bath & laundry room
 - Delete 30" x 36" VSL in laundry room
 - Add 48" x 30" HSL window to Bedroom 4
 - Add 72" x 24" P window to bonus room
 - Reduced owner's walk-in closet and wire shelving
- *Cannot be combined with **Select-6** option



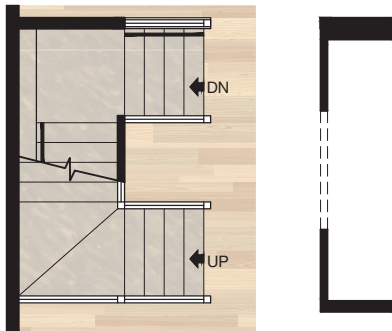
FEATURED GREYSTONE OPTIONS



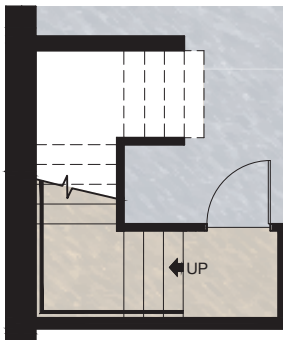
SELECT-10

STAIRWELL DEVELOPMENT OPTION

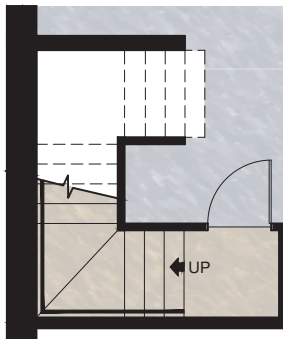
- Move 2'8" door from top of stair to basement stair landing
- Additional railing to main floor stairwell



Main Floor Plan
Stair and Railing Details



Basement Stair Details
(8'0" Foundation)



Basement Stair Details
(9'0" Foundation)

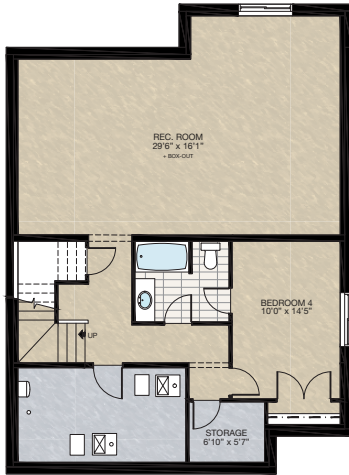


FEATURED OPTIONS

THE
GREYSTONE
2891 SQ.FT.

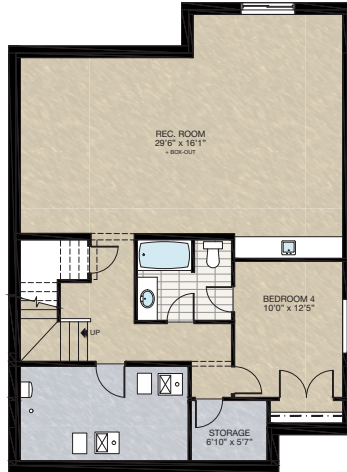
SELECT-8 BASEMENT DEVELOPMENT OPTION 1

- 944 Sq.Ft. Developed area
- Included finished basement stairwell
- Delete 2'8" door top of stairwell
- Add one riser to stairwell for 9'0" basement ceiling (8'9" headroom clearance)
- Both basement windows upgrade from 60" x 24" DBL SL to 60" x 36" DBL SL and 60" x 24" SL to 60" x 36" SL



SELECT-9 BASEMENT DEVELOPMENT OPTION 2

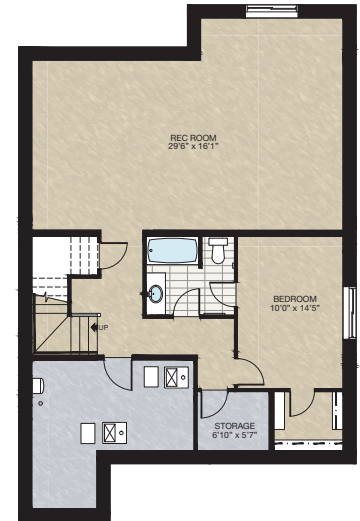
- 944 Sq.Ft. Developed area
- Included finished basement stairwell
- Delete 2'8" door top of stairwell
- Add one riser to stairwell for 9'0" basement ceiling (8'9" headroom clearance)
- Both basement windows upgrade from 60" x 24" DBL SL to 60" x 36" DBL SL and 60" x 24" SL to 60" x 36" SL
- Reduced bedroom 2'0" to accommodate wet bar
- Add 10'0" wet bar with lower cabinetry & bar sink
- Drop ceiling over bar area to match underside of drop beam



SELECT-11 BASEMENT DEVELOPMENT OPTION 3

- 970 Sq.Ft. Developed area
- Included finished basement stairwell
- Delete 2'8" door top of stairwell
- Add one riser to stairwell for 9'0" basement ceiling (8'9" headroom clearance)
- Both basement windows upgrade from 60" x 24" DBL SL to 60" x 36" DBL SL and 60" x 24" SL to 60" x 36" SL

*Must be combined with **SELECT-10** for main floor bedroom and bathroom option



Trico Homes is a local home builder, with new single and multi-family homes for sale in Calgary, Okotoks, Chestermere, Cochrane, Airdrie and DeWinton. Offering a great selection of starter, move-up, semi-estate and ultra-estate models in numerous communities, you'll find the house that's just right for you! Look for this model and many others in Ambleton, Arbour Lake, Belmont, Carrington, Chelsea, Cornerbrook, D'Arcy, Dawson's Landing, Glacier Ridge, Hamilton Heights, Homestead, Legacy, Midtown, Pine Creek, Precedence, Rivercrest, Seton, Sirocco, Verona West Townhomes, West83 Townhomes and Wolf Willow.



Renderings are artist's conceptions only and may vary by community and lot selection. Prices, floorplans, specifications and dimensions are approximate and are subject to change without notice. E.&O.E. © All rights reserved, including the right if reproduction in the whole or in part without the permission of Trico Homes.

Plan updated as of October 04, 2024.



tricohomes.com