


← 36' →
Min. Lot Width

 1 Bedroom

 1½ Bathrooms

 Double Garage

THE WYNWOOD 28'

1269 SQ.FT.

Elements Specification

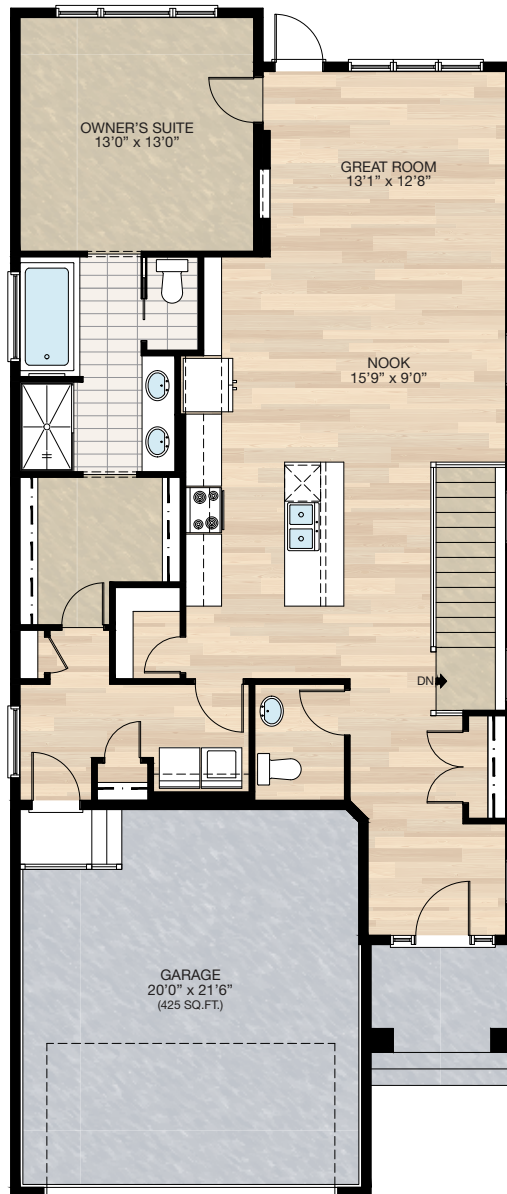
Elite Specification



Trico Homes™
The Heart of Homebuilding®

STANDARD PLAN

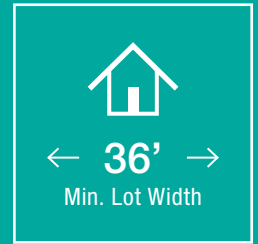
THE
WYNWOOD
1269 SQ.FT.



MAIN
1269 SQ.FT.

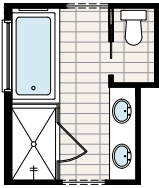


FEATURED OPTIONS



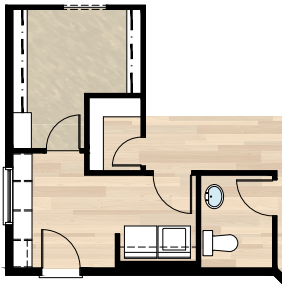
SELECT-1 ENSUITE OPTION

- *CANNOT be combined with **SELECT-3** or **4** option
- Delete standard 36" x 60" fiberglass shower
- Add 40" x 60" tiled shower with 10mm glass
- Extend tub tiled ledge by 3.5" next to shower
- Relocate towel bar to opposite side of tub



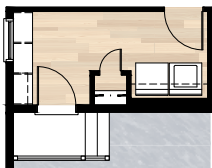
SELECT-2 MUDROOM MDF LOCKER OPTION

- *CANNOT be combined with **SELECT-3** or **4** option
- Delete coat closet & linen closet at mudroom
- Add 8'0" locker & coat hooks with MDF backing
- Replace 30" of closet shelving in master walk-in closet with four 30" wide and 16" deep wire shelving for linen
- Re-center mudroom window between shelves & wall
- Garage entrance door moved 1'4" towards W/D



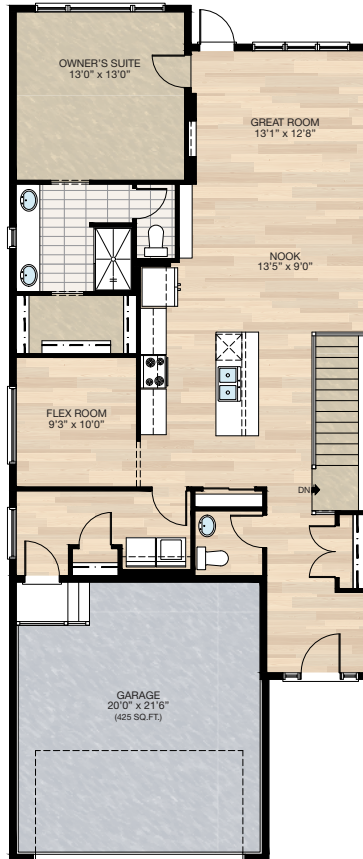
SELECT-4A MUDROOM LOCKER OPTION

- *MUST be combined with **SELECT-4** Flex Room option
- Reduce width of coat closet in mudroom
- Delete 48" x 18" P window in mudroom
- Add 36" x 18" P window to mudroom
- Add 6'-6" MDF locker & coat hooks with MDF backing
- Extend wood landing at garage entry by 12"



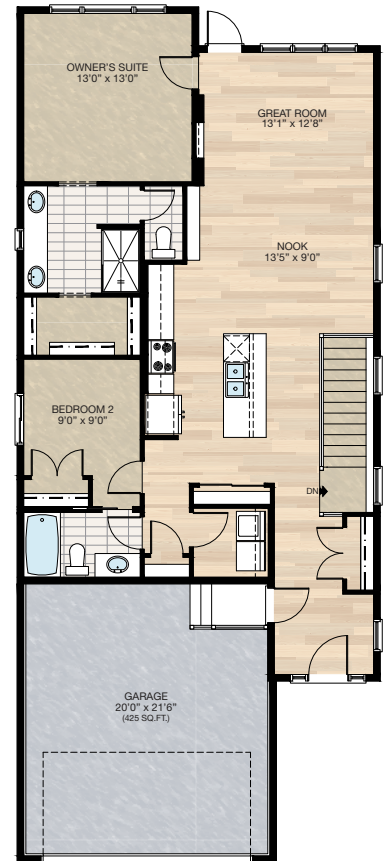
SELECT-4 FLEX ROOM OPTION

- Delete 72" x 36" soaker tub at ensuite
- Delete 60" x 48" P frosted window at ensuite
- Add 20" x 48" P frosted window at ensuite between two sinks
- Vanity mirror to be two 24" x 42" centered over each sink
- Additional 22" of vanity at ensuite
- Water closet door changed from pocket door to swing door
- Reduced master walk-in closet
- Add 72" x 18" P window to flex room
- Delete 11" cabinetry at kitchen
- Delete walk-in pantry
- Add pantry closet
- Upgrade kitchen 3 way switch to 4 way switch
- Delete linen closet in mudroom
- Increase width to coat closet in mudroom

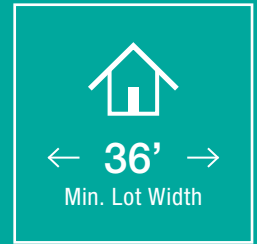


SELECT-3 2 BEDROOMS OPTION

- Delete 72" x 36" soaker tub at ensuite
- Delete 60" x 48" P frosted window at ensuite
- Add 20" x 48" P frosted window at ensuite between two sinks
- Vanity mirror to be two 24" x 42" centered over each sink
- Additional 22" of vanity at ensuite
- Change water closet door from pocket to swing door
- Reduced master walk-in closet
- Add 2nd bedroom with closet
- Add 3 piece main bath including a 2'6" pocket door access from Bedroom 2
- Upgrade single switch to 3 way switch in main bath
- Add 48" x 40" HSL to Bedroom 2
- Delete 1/2 bath
- Delete 8" cabinetry at kitchen
- Delete walk-in pantry
- Add pantry closet
- Upgrade kitchen 3 way switch to 4 way switch
- Delete mudroom & 48" x 18" P window & relocate garage entrance

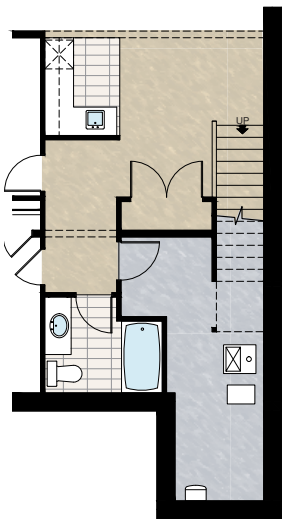


FEATURED WYNWOOD 28' OPTIONS



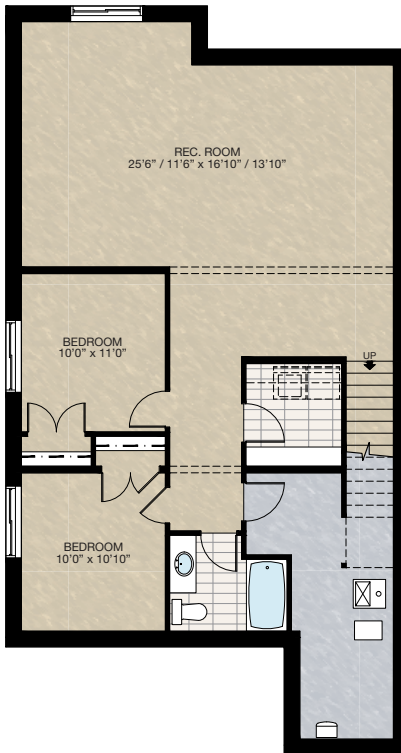
SELECT-6B BAR & STORAGE CLOSET OPTION

- Must combined with **SELECT-6** basement development **OPTION 1**
- Extended stubwall at stair next to storage closet
- Add tile to bar area



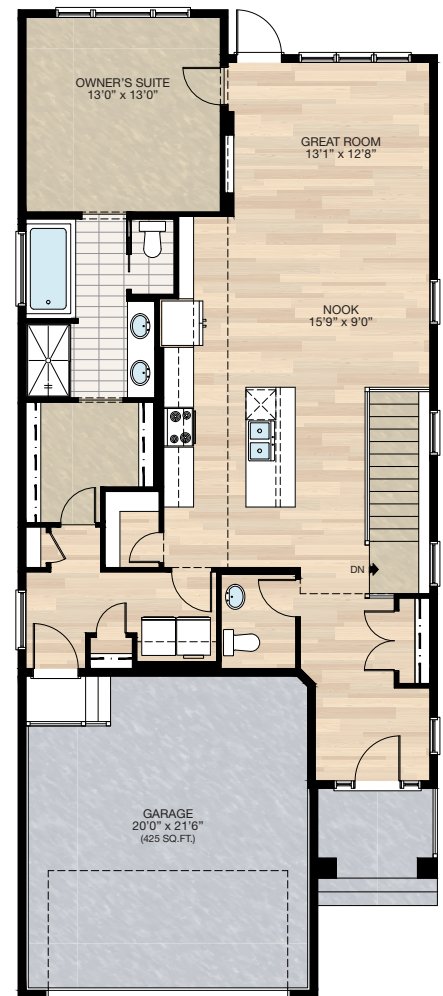
SELECT-7 BASEMENT DEVELOPMENT OPTION 2

- 978 Sq.Ft. developed area
- Add 1 riser to finished stairwell for 9'0" basement ceiling (8'9" headroom clearance)
- Add laundry room with washer & dryer rough-in
- All three basement windows upgraded from 24" high to 36" high



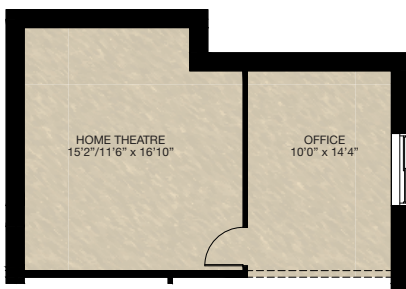
SELECT-8 VAULTED CEILING OPTION

- Vaulted ceiling to kitchen, nook & great room
- Interior vault slope to be 1/2 of the main roof slope



SELECT-6C HOME THEATRE OPTION

- Must combined with **SELECT-6** or **7** basement development option
- Relocated window from rear to side

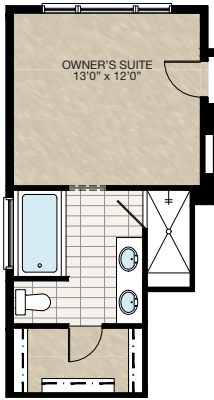


FEATURED OPTIONS

THE
WYNWOOD
1269 SQ.FT.

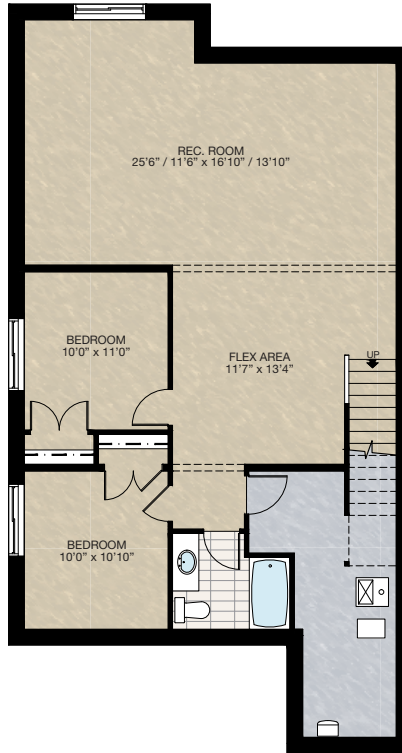
SELECT-5 ENSUITE OPTION 2

- *MUST combine with **SELECT-3** or **4** option
- Add 72" x 36" soaker tub with 4" tiled deck
- Delete 27.5" length of vanity
- Delete 20" x 48" P frosted window
- Add 60" x 48" P frosted window
- Reduced master bedroom length by 12"
- Delete 36" x 60" fibreglass shower unit
- Add 36" x 81" tiled shower with 10mm glass door & 12" tiled bench



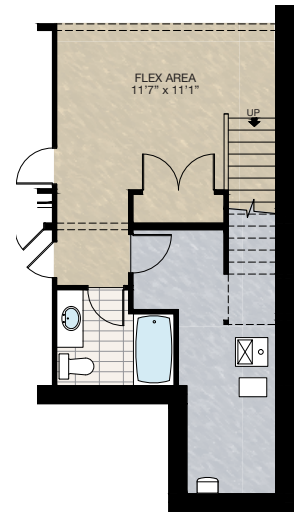
SELECT-6 BASEMENT DEVELOPMENT OPTION 1

- 978 Sq.Ft. developed area
- Add 1 riser to finished stairwell for 9'0" basement ceiling (8'9" headroom clearance)
- All three basement windows upgraded from 24" high to 36" high
- Stub wall added to stairs



SELECT-6A STORAGE CLOSET OPTION

- Must combined with **SELECT-6** basement development **OPTION 1**
- Extended stubwall at stair next to storage closet



Trico Homes is a local home builder, with new single and multi-family homes for sale in Calgary, Okotoks, Chestermere, Cochrane, Airdrie and DeWinton. Offering a great selection of starter, move-up, semi-estate and ultra-estate models in numerous communities, you'll find the house that's just right for you! Look for this model and many others in Ambleton, Arbour Lake, Belmont, Carrington, Chelsea, Cornerbrook, D'Arcy, Dawson's Landing, Glacier Ridge, Hamilton Heights, Homestead, Legacy, Midtown, Pine Creek, Precedence, Rivercrest, Seton, Sirocco, Verona West Townhomes, West83 Townhomes and Wolf Willow.



Renderings are artist's conceptions only and may vary by community and lot selection. Prices, floorplans, specifications and dimensions are approximate and are subject to change without notice. E.&O.E. © All rights reserved, including the right if reproduction in the whole or in part without the permission of Trico Homes.

Plan updated as of October 04, 2024.



tricohomes.com